

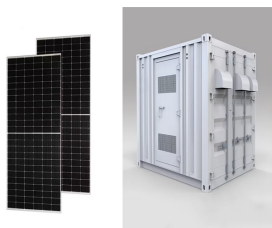
PROVISIONS FOR ENERGY STORAGE CONFIGURATION AT NEW ENERGY STATIONS



What constraints must the energy storage station satisfy? The constraints that the energy storage station must satisfy include the capacity and power constraints of the energy storage configuration, as well as the constraint on the unit cost of the energy storage service. The capacity and power constraints are shown in Eqs. (10 ??? 11). The unit cost constraint of the energy storage service is as follows:



What are energy storage configuration models? Energy storage configuration models were developed for different modes, including self-built, leased, and shared options. Each mode has its own tailored energy storage configuration strategy, providing theoretical support for energy storage planning in various commercial contexts.



What is the energy storage configuration model in shared mode? The energy storage configuration model in the shared mode is as follows. The upper game leader is the energy storage station, and the objective function maximizes the revenue: $\max C_{\{share, leader\}} = \sum \limits_{i} \{C_{\{i, service\}}\} - C_{\{investor\}}$



What is the configuration model of energy storage in self-built mode? According to the above model, the configuration model of energy storage in the self-built mode is a mixed integer planning problem, which can be solved directly by using the Cplex solver. In the leased mode, it is assumed that the energy storage company has adequate resources to generally meet the new energy power plant's storage needs.



How can energy storage configuration models be improved? On the other hand, refining the energy storage configuration model by incorporating renewable energy uncertainty management or integrating multiple market transaction systems (such as spot and ancillary service markets) would improve the model's practical applicability.

PROVISIONS FOR ENERGY STORAGE CONFIGURATION AT NEW ENERGY STATIONS



What are the different types of energy storage configurations? New energy power plants can implement energy storage configurations through commercial modes such as self-built, leased, and shared. In these three modes, the entities involved can be classified into two categories: the actual owner of the energy storage and the user of the energy storage.



On May 14, 1968, the first PSPS in China was put into operation in Gangnan, Pingshan County, Hebei Province. It is a mixed PSPS. There is a pumped storage unit with the installed capacity ???



This paper proposes a benefit evaluation method for self-built, leased, and shared energy storage modes in renewable energy power plants. First, energy storage configuration ???



In recent years, many scholars have carried out extensive research on user side energy storage configuration and operation strategy. In [6] and [7], the value of energy storage ???



To this end, this paper analyzes the key factors faced by new energy units participating in the market, proposes the installation of energy storage facilities to suppress the ???

PROVISIONS FOR ENERGY STORAGE CONFIGURATION AT NEW ENERGY STATIONS



„ ???



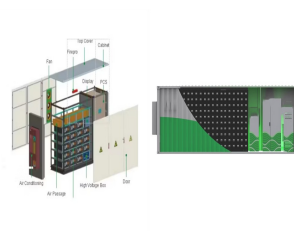
There is few research on energy storage optimization, especially on the new energy side energy storage, so research storage capacity in the new optimized configuration technology on the energy side is necessary.



In the context of increasing renewable energy penetration, energy storage configuration plays a critical role in mitigating output volatility, enhancing absorption rates, and ???



This paper proposes an energy storage configuration method in new energy stations to promote the consumption of new energy. At first, the cost model included three sub-modules of energy ???



Technicians inspect wind farm operations in Hinggan League, Inner Mongolia autonomous region, in May 2023. WANG ZHENG/FOR CHINA DAILY China has been stepping up construction of new energy storage