

PUMPED HYDRO PLUS ELECTRICITY



What is a pumped hydro battery? A pumped hydro battery, or pumped hydro storage, is an energy storage system that uses water and elevation differences to store and generate electricity. It works similarly to a battery, storing energy during off-peak periods and releasing it during peak demand.



What are the benefits of a pumped hydro system? High efficiency**:
Pumped hydro storage systems typically boast efficiency rates of 70-85%, making them one of the most efficient energy storage options available. Environmentally friendly: As a clean and renewable energy source, pumped hydro contributes to reducing greenhouse gas emissions and dependence on fossil fuels.



How many gigawatts of pumped hydro energy storage are there? There are 22 gigawatts of pumped hydro energy storage in the US today, which represents 96% of all energy storage in the US. Source: The C Three Group's North American Electric Generation Project Database What Is Pumped Hydro Storage?



What is pumped hydro energy storage (PHES)? Fortunately, Europe has unlimited, low-cost, off-the-shelf, low-environmental-impact, long-duration, off-river pumped hydro energy storage (PHES), that requires tiny amounts of land and water and does not require new dams on rivers. PHES provides about 95% of global long-duration (hours-days) energy storage (GWh).



How does pumped storage hydropower work? Pumped Storage Hydropower (PSH) acts similarly to a giant battery, because it can store power and then release it when needed. The Department of Energy's "Pumped Storage Hydropower" video explains how PSH works.

PUMPED HYDRO PLUS ELECTRICITY



What is micro pumped hydro storage? Micro pumped hydro storage: Smaller-scale systems designed for residential or small-scale commercial use. Pumped hydro offers several advantages over other energy storage solutions: Large-scale energy storage: Pumped hydro systems can store vast amounts of energy, making them ideal for grid-scale applications.



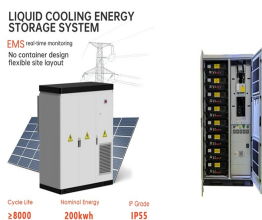
Pumped storage hydropower (PSH) is a type of hydroelectric energy storage. It is a configuration of two water reservoirs at different elevations that can generate power as water moves down from one to the other (discharge), a?|



Plus, closed-loop pumped hydro storage systems generate electricity with the least amount of greenhouse gases, according to the National Renewable Energy Laboratory. While there are challenges in integrating a?|



A reliable, durable and large-scale storage solution 10 min read. Australia's favourable natural geographical landscape and abundance of retiring mine sites provide a unique opportunity for pumped hydro energy storage a?|



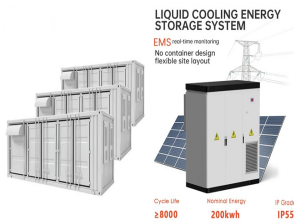
Pumped storage hydropower does not calculate levelized cost of energy (LCOE) or levelized cost of storage (LCOS) and so does not use financial assumptions. Therefore, all parameters are a?|



Large-scale: This is the attribute that best positions pumped hydro storage which is especially suited for long discharge durations for daily or even weekly energy storage applications.. Cost-effectiveness: thanks to its lifetime a?|

PUMPED HYDRO PLUS ELECTRICITY

For decades, utilities have used pumped hydro storage as an economical way to utilise off-peak energy, by pumping water to a reservoir at a higher level. During peak load periods the stored water is discharged through a?



The nation now sees 52.3 GW of pumped hydro storage under construction or planned and is by far the largest contributor of Asia-Pacific energy companies, which have approximately 71 gigawatts of pumped hydro energy a?



The traditional operation of PSHPs is mainly focused on satisfying the load by means of the so called hydro-thermal coordination. Thus, the water is pumped during off-peak a?



One such technology is Pumped Hydropower Storage (PHS), a proven solution for large-scale energy storage that supports grid stability and renewable energy integration. In this blog, we explore the two primary types of a?



UK unveils LDES support plan: cap-and-floor, 6-hour-plus duration, and lithium-ion excluded. By Cameron Murray. January 10, 2024. Europe. Grid Scale, Connected Email Cruachan Dam, Scotland, an existing a?

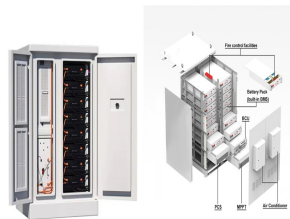


Pumped hydro energy storage is also generally cheaper than battery storage at large scales. Batteries are the preferred method for energy storage over seconds to hours, while pumped hydro is preferred for overnight a?

PUMPED HYDRO PLUS ELECTRICITY



A review of pumped hydro energy storage, Andrew Blakers, Matthew Stocks, Bin Lu, Cheng Cheng. Annual operation and maintenance costs plus major refurbishments after 20 and 40 years cost about 1% of the a?]



Off-river pumped hydro energy storage. In 2021, the U.S. had 43 operating pumped hydro plants with a total generating capacity of about 22 gigawatts and an energy storage capacity of 553 gigawatt-hours. They make a?]



A pumped hydro energy storage (PHES) site comprises two reservoirs at different altitudes spaced a few km apart and connected with a tunnel or pipe containing a pump/turbine. On sunny and windy days water is a?]