

PV PROJECT ENERGY STORAGE CAPACITY CONFIGURATION



What determines the optimal configuration capacity of photovoltaic and energy storage? The optimal configuration capacity of photovoltaic and energy storage depends on several factors such as time-of-use electricity price, consumer demand for electricity, cost of photovoltaic and energy storage, and the local annual solar radiation.



Why is energy storage important in a PV plant? An energy storage system can respond to dynamic energy changes in a timely manner, effectively absorbing and releasing energy to mitigate grid fluctuations. The capacity configuration of an energy storage system has an important impact on the economy and safety of a PV plant .



How do PV panel types affect capacity allocation with ESS? Impact of PV panel types on capacity allocation with ESS The allocation of energy storage in the PV system not only reduces the PV rejection rate, but also cuts the peaks and fills the valley through the energy storage system, and improves the economics of the whole system through the time-sharing electricity price policy.



Can fixed energy storage capacity be configured based on uncertainty of PV power generation? As PV power outputs have strong random fluctuations and uncertainty, it is difficult to satisfy the grid-connection requirements using fixed energy storage capacity configuration methods. In this paper, a method of configuring energy storage capacity is proposed based on the uncertainty of PV power generation.



Are photovoltaic penetration and energy storage configuration nonlinear? According to the capacity configuration model in Section 2.2, Photovoltaic penetration and the energy storage configuration are nonlinear. Considering the charging power and other effects, if you use mathematical methods such as enumeration, the calculation is complicated and the efficiency is extremely low.

PV PROJECT ENERGY STORAGE CAPACITY CONFIGURATION



What is energy storage capacity configuration? The energy storage capacity configuration is the one Scan for more details Honglu Zhu et al. Research on energy storage capacity configuration for PV power plants using uncertainty analysis and its applications 609 of the hotspots in current study [8, 9, 10].



With the development of the photovoltaic industry, the use of solar energy to generate low-cost electricity is gradually being realized. However, electricity prices in the power grid fluctuate throughout the day. Therefore, it is necessary to integrate photovoltaic and energy storage systems as a valuable supplement for bus charging stations, which can reduce ???



In projects related to distributed renewable energy configuration and energy storage, the installed capacity proportion of PV energy storage projects is 11.9%. By the end of 2020, the cumulative installed capacity of projects combining distributed photovoltaics amounted to 214.0 MW, representing 24.2% of all PV energy storage projects.



Modeling and optimal capacity configuration of dry gravity energy storage integrated in off-grid hybrid PV/Wind/Biogas plant incorporating renewable power generation forecast power is distributed across different sources, namely, 827 MW in solar projects (constituting 20.41 % of the RE capacity), 1423 MW in wind projects the best way to



In this paper, a method for rationally allocating energy storage capacity in a high-permeability distribution network is proposed. By constructing a bi-level programming model, the optimal capacity of energy storage connected to the distribution network is allocated by considering the operating cost, load fluctuation, and battery charging and discharging strategy. ???

PV PROJECT ENERGY STORAGE CAPACITY CONFIGURATION



The optimal configuration of energy storage capacity is an important issue for large scale solar systems. a strategy for optimal allocation of energy storage is proposed in this paper. First ???



The quality of power output from photovoltaic (PV) systems is easily influenced by external environmental factors. To mitigate the power fluctuations that can impact the quality of electricity in the grid, this paper establishes an optimization model for capacity configuration of hybrid energy storage systems based on load smoothing.



The optimal configuration capacity of photovoltaic and energy storage depends on several factors such as time-of-use electricity price, consumer demand for electricity, cost ???



The integrated electric vehicle charging station (EVCS) with photovoltaic (PV) and battery energy storage system (BESS) has attracted increasing attention [1]. This integrated charging station could be greatly helpful for reducing the EV's electricity demand for the main grid [2], restraining the fluctuation and uncertainty of PV power generation [3], and consequently ???



Photovoltaic (PV) is becoming popular in many countries. However, due to the influence of weather, the PV output power often fluctuates greatly in a short time, and its intermittence makes it difficult to meet the load demand. The Hybrid energy storage system (HESS) can smooth the PV power fluctuation and optimize the operation of the whole system. ???

PV PROJECT ENERGY STORAGE CAPACITY CONFIGURATION



TAX FREE



The configuration of photovoltaic & energy storage capacity and the charging and discharging strategy of energy storage can affect the economic benefits of users. This paper considers the annual comprehensive cost of the user to install the photovoltaic energy storage system and the user's daily electricity bill to establish a bi-level



Power Conversion System
- Single-stage three-level modulation
- Multi-branched input to reduce battery series and parallel connection

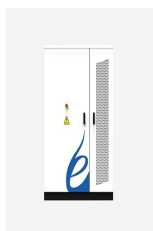
Based on Form EIA-860 data, the most common configuration is PV + storage (73 projects totaling 992 MW of solar and 250 MW storage), followed by several fossil-based hybrid categories. Co-located or hybrid power plants???namely, ones that integrate energy storage on-site with power generation sources, or that co-locate two or more different



TAX FREE



Large-scale integration of renewable energy in China has had a major impact on the balance of supply and demand in the power system. It is crucial to integrate energy storage devices within wind power and photovoltaic (PV) stations to effectively manage the impact of large-scale renewable energy generation on power balance and grid reliability.



The installed capacity of energy storage in China has increased dramatically due to the national power system reform and the integration of large scale renewable energy with other sources. To support the construction of large-scale energy bases and optimizes the performance of thermal power plants, the research on the corporation mode between energy ???



Pumped storage energy configuration. Pumped storage is the main way of large-capacity electric energy storage. It has the functions of peak regulation, valley filling, frequency modulation and accident backup. Pumped storage has the function of low absorption and high incidence.

PV PROJECT ENERGY STORAGE CAPACITY CONFIGURATION



The optimized capacity configuration of the standard pumped storage of 1200 MW results in a levelized cost of energy of 0.2344 CYN/kWh under the condition that the guaranteed power supply rate and the new energy absorption rate are both >90%, and the study on the factors influencing the regulating capacity of pumped storage concludes that the



The optimal capacity of energy storage facilities is a cornerstone for the investment and low-carbon operation of integrated energy systems (IESs). However, the intermittence of renewable energy and the different operating characteristics of facilities present challenges to IES configuration.



The load demand is met by reasonable configuration of energy storage system. The following three scenarios are studied in this paper: (1) The energy storage unit only contains battery, which can smooth the power fluctuation and effectively transfer electrical energy to meet the power load. The capacity configuration of multi-energy system



It is necessary to consider wind and PV energy from the perspective of the power market and multi-energy comprehensive utilization. This research was funded by "the State Grid science and technology project, grant number (SGJSZJ00KJJS2200798)". "An Energy Storage Capacity Configuration Method for a Provincial Power System



At present, capacity configuration optimization research focuses on cost minimization as a single objective, or multi-objectives such as cost, reliability, and carbon emission cost, to configure the capacity of electrolysis and energy storage equipment. Models can be divided into linear and non-linear optimizations.

PV PROJECT ENERGY STORAGE CAPACITY CONFIGURATION



1. The new standard AS/NZS5139 introduces the terms "battery system" and "Battery Energy Storage System (BESS)". Traditionally the term "batteries" describe energy storage devices that produce dc power/energy. However, in recent years some of the energy storage devices available on the market include other integral



This article discusses the optimization of microgrid and energy storage capacity configuration in a multi-microgrid system with a shared energy storage service provider. the total investment in the project in the initial stage will be higher. on the other hand, if the quantity is too low, it will lead to a waste of wind and solar resources



The storage capacity of the battery is 11512.68 kW?h, the unused power of the system is 2809.74 kW?h, and the renewable energy utilization rate is 99.44%. These results indicate that the capacity configuration of the renewable energy side of the wind power hydrogen generation system is reasonable.



Capacity Configuration Strategy of Hybrid Energy Storage System Considering Photovoltaic Power Fluctuation Suppression and Operation Optimization a PV demonstration project in Shandong

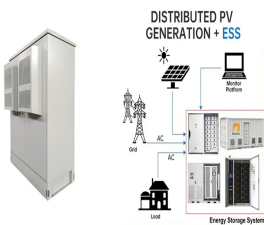


The optimized capacity configuration of the standard pumped storage of 1200 MW results in a levelized cost of energy of 0.2344 CYN/kWh under the condition that the guaranteed power supply rate and the new energy absorption rate are both >90%, and the study on the factors influencing the regulating capacity of pumped storage concludes that the

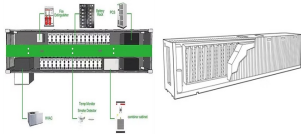
PV PROJECT ENERGY STORAGE CAPACITY CONFIGURATION



As flexible resources, cascaded hydropower stations can regulate the fluctuations caused by wind and photovoltaic power. Constructing pumped-storage units between two upstream and downstream reservoirs is an effective method to further expand the capacity of flexible resources. This method transforms cascaded hydropower stations into a cascaded ???



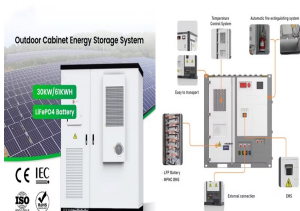
This paper focuses on the optimal capacity configuration of a wind, photovoltaic, hydropower, and pumped storage power system. In this direction, a bi-level programming model for the optimal capacity configuration of wind, photovoltaic, hydropower, pumped storage power system is derived.



The installed capacity of energy storage in China has increased dramatically due to the national power system reform and the integration of large scale renewable energy with other sources.



Aiming at the problem of pseudo-modals in the Complete Ensemble Empirical Mode Decomposition With Adaptive Noise (CEEMDAN), an improved Complete Ensemble Empirical Mode Decomposition With Adaptive Noise (ICEEMDAN) method is introduced to configure the energy storage capacity of photovoltaic power plants combined with Fast Fourier Transform ???



Keywords: distribution network, energy storage system, particle swarm optimization, photovoltaic energy, voltage regulation. Citation: Li Q, Zhou F, Guo F, Fan F and Huang Z (2021) Optimized Energy Storage System Configuration for Voltage Regulation of Distribution Network With PV Access. Front. Energy Res. 9:641518. doi: 10.3389/fenrg.2021.641518