

# RELIABLE SOLAR POWER PLANTS



Despite the impressive growth of solar and wind power, the overall share of clean energy sources in total electricity supply in 2018, at 36%, was the same as it was 20 years earlier because of the decline in nuclear. Nuclear power plants contribute to electricity security in multiple ways. Nuclear plants help to keep power grids stable. To



On the pros side, geothermal energy is a reliable source of power that has a small land footprint compared to other renewable sources; it can be harnessed at both large and small scales, the industry is expanding, and its infrastructure is long-lasting. That's 88 percent less space for a geothermal power plant compared to a solar farm, both



There are usually three different types of Solar Power plant. Off-Grid or Stand-alone Systems, On Grid Systems or Grid-Connected Systems, Hybrid System. All these systems are used for different applications. Solar Tech provide durable, reliable and quality solar energy products, energy efficient products for various domestic, commercial and



Renewable plants are considered intermittent or variable sources and are mostly limited by a lack of fuel (i.e. wind, sun, or water). As a result, these plants need a backup power source such as large-scale storage ???

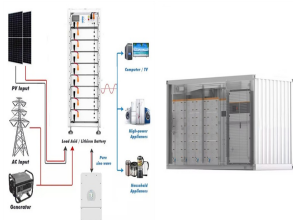


Solar power, also known as solar electricity, is the conversion of energy from sunlight into electricity, either directly using photovoltaics (PV) or indirectly using concentrated solar power. Solar panels use the photovoltaic effect to convert light into an electric current. [2] Concentrated solar power systems use lenses or mirrors and solar tracking systems to focus a large area of ???

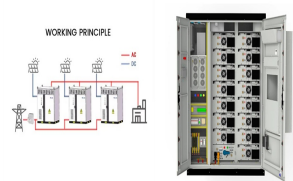
# RELIABLE SOLAR POWER PLANTS



Nuclear energy plants take up far less physical space than other common clean energy facilities (particularly wind and solar power). According to the Department of Energy, a typical nuclear facility producing 1,000 megawatts (MW) of electricity takes up about one square mile of space. such as large coal plants. Reliable energy source



First and foremost, solar power plants require space. For example, a solar power plant to provide electricity for 1,000 homes would require 32 acres of land. This means that, in order to meet the US energy consumption needs, nearly 19 million acres, equivalent to 0.8% of the entire country, would be necessary.



Renewable energy skeptics argue that because of their variability, wind and solar cannot be the foundation of a dependable electricity grid. But the expansion of renewables and new methods of energy ???



Nuclear power plants have stable and reliable operation. Nuclear Power Plants ??? Disadvantages. Though, nuclear power plants have several advantages as given above. A solar power plant is a type of power generating stations in which solar panels are used to convert sunlight into electricity. These power plants are also known as solar farms.



Purpose of Review As the renewable energy share grows towards CO2 emission reduction by 2050 and decarbonized society, it is crucial to evaluate and analyze the technical and economic feasibility of solar energy. Because concentrating solar power (CSP) and solar photovoltaics (PV)-integrated CSP (CSP-PV) capacity is rapidly increasing in the ???



Here we address some of the most frequently asked questions, myths and misconceptions surrounding solar energy, solar farms and solar panels. Do solar panels need bright sunshine in order to work? No. Solar ???

## RELIABLE SOLAR POWER PLANTS



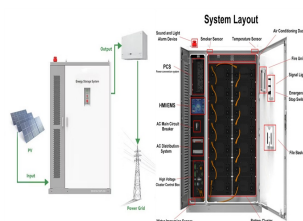
The "Towards Competitive, Reliable, Safe and Sustainable Concentrated Solar Power (CSP) Plants" (TOPCSP) doctoral network offers a unique international, intersectoral and interdisciplinary research and innovation framework to 10 promising doctoral fellows.



A solar power plant is an arrangement of various solar components including solar panel to absorb and convert sunlight into electricity, a solar inverter to convert the electricity from DC to AC while also monitoring the system, solar batteries and other solar accessories to set up a working system.. The main concern of a solar power plant is to provide complete energy independence ???



Is nuclear cost-competitive with solar?. The cost of nuclear power plants depends on the capital costs of setting up the facility, as well as fuel and other operating expenses. Estimates vary on how expensive nuclear electricity is. A report by Lazard suggests that the levelised cost of energy (LCOE), which includes construction, fuel, operation, and ???



As one of SA's most reliable Solar Power Energy Suppliers we endeavour to deliver the best durable and high quality mounted PV Solar Systems.  
admin@solex ; quotes@solex ; Mon to Fri: 8:00am - 5:00pm; Solex plans, constructs and operates solar plants across South Africa, with excellent practical knowledge of the solar industry



The 40.5 MW J?nnersdorf Solar Park in Prignitz, Germany. A photovoltaic power station, also known as a solar park, solar farm, or solar power plant, is a large-scale grid-connected photovoltaic power system (PV system) designed for the supply of merchant power. They are different from most building-mounted and other decentralized solar power because they supply ???

# RELIABLE SOLAR POWER PLANTS



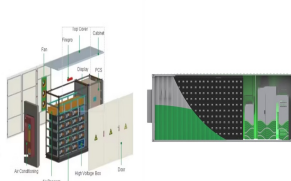
renewables-based power system is not only reliable, but also economically efficient. summary. W 5 Baseload is a characteristic of electricity demand and not a necessity of the supply plants, and concentrated solar power (CsP) plants with thermal storage (such as in molten salt) all gener-ate dispatchable renewable power. Integrating these power



The cost of electricity from new nuclear power plants remains stable, yet electricity from the long-term operation of nuclear power plants constitutes the least cost option for low-carbon generation. At the assumed carbon price of USD 30 per tonne of CO<sub>2</sub> and pending a breakthrough in carbon capture and storage, coal-fired power generation is slipping out of the ???



Moreover, a geothermal??solar chimney power plant in the coldest month of the year showed the same output power as solar chimney power plants could generate in the warmest month of the year. Annual averaged thermal flux productivity under the hybrid system is 585.12% larger than sole geothermal spring production.

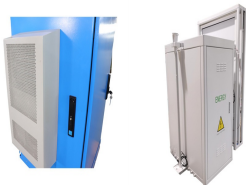


This research presents a comprehensive review of solar chimney power plants (SCPP) as a reliable source of renewable electricity generation. Solar chimney power plants differ from other renewable energy ???



0% of energy wasted. Lower Your Family's Annual Utility Costs by up to 1/3 This system stores all excess energy in a portable power station during the daytime and gives it back to you whenever you need it. With up to 1039kWh feeding ???

# RELIABLE SOLAR POWER PLANTS



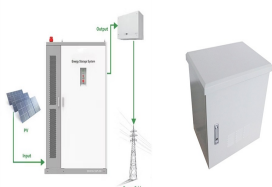
This guide covers the essentials of solar power plant design, from site selection to system layout, helping you create efficient and solar installation. Since its founding in 2012, Soleos has given clients around the world cutting-edge, affordable, sustainable, and reliable solar power solutions. Our Story Vision / Mission Global Leadership



A third option for stabilizing the grid as renewable energy generation increases is diversity, both of geography and of technology ??? onshore wind, offshore wind, solar panels, solar thermal power, geothermal, ???



"Firming" solar generation ??? Short-term storage can ensure that quick changes in generation don't greatly affect the output of a solar power plant. For example, a small battery can be used to ride through a brief generation disruption from a ???



Shams is a 100-megawatt (MW) concentrated solar power (CSP) plant located in the Western Region of Abu Dhabi. We are dedicated to providing a clean and reliable source of energy. At Shams Power Plant, our mission is to deliver sustainable, affordable and reliable solar energy that supports sustainable development and the UAE's strategic



Solar: In an average year, nobody would die ??? only every 50 years would someone die. The safest energy sources are also the cleanest. In other countries, more people will live closer to power plants and be exposed to more pollution. If two countries produce the same amount of coal power and both have the same pollution controls, the



Explore our uninterruptible power supply solutions for reliable outdoor backup power systems. Trust Solis Energy Inc for hours/day battery backup. (407) 339-6786 150 N CYPRESS WAY. CASSELBERRY, FLORIDA 32707 Solis ???

# RELIABLE SOLAR POWER PLANTS

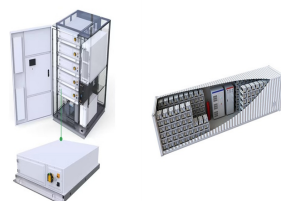
---



How Reliable Is the Rest of My Solar Setup? In addition to photovoltaic panels, solar power systems contain components like inverters, solar batteries and a battery management system (BMS), and charge controllers. These components are crucial for converting the solar energy captured by solar panels into usable electricity and for the overall reliability of your ???



Solar power plant storage makes solar energy much more reliable and, therefore, much more attractive to utilities and their stakeholders. Top 5 biggest solar power plants. Solar power plants can produce massive amounts of electricity, with some of the biggest boasting outputs of over 1,000 megawatts!



"A solar power plant is based on converting sunlight into electricity, either directly using photovoltaic or indirectly using concentrated solar power. Solar power is the cleanest, most reliable form of renewable energy available and it can be used in several forms to help in power ???