

REQUIREMENTS FOR PHOTOVOLTAIC PANEL INSTALLATION LINES



What are the requirements for a PV installation? Virtually all domestic PV installations will fall under the scope of Part P. Part P requires the relevant Building Control department to be notified and approve the work. There are two routes to comply with the requirements of Part P: Notify the relevant Building Control department before starting the work.



Do solar panels comply with building regulations? Your solar panel system must comply with building regulations in terms of structural integrity, electrical safety and fire safety. These regulations may vary depending on the size and type of the installation. It's advisable to work with accredited installers who are familiar with these requirements.



Do you need planning permission to install solar panels on your roof? An increasing number of people are investing in solar energy. More and more homes are having solar panels, or solar tiles, installed on their roofs. Of course, with such installations, the topic of planning permission and building regulations often comes to the surface.



How do I ensure compliance with building regulations for solar panel installations? To ensure compliance with building regulations for solar panel installations, follow these essential steps: Engaging a Qualified Installer: It is crucial to engage a reputable and qualified installer who is knowledgeable about building regulations and experienced in solar panel installations.



Are there any UK standards relating to a PV installation? While many UK standards apply in general terms, at the time of writing there is still relatively little which specifically relates to a PV installation. However, there are two documents which specifically relate to the installation of these systems that are of particular relevance:

REQUIREMENTS FOR PHOTOVOLTAIC PANEL INSTALLATION LINES



How to choose a solar panel installer? Engaging a Qualified Installer: It is crucial to engage a reputable and qualified installer who is knowledgeable about building regulations and experienced in solar panel installations. They will ensure that the installation meets all the necessary requirements and follows best practices.



6 CleAn enerGy StAtES AlliAnCe S StAinAIE SOLAr EcAtiOn prOEct inspectors, permitting staff, fire marshals, and other personnel lack the training and other support to correctly and consistently apply code standards.



Type of solar panel: Description: Average efficiency rating: Average lifespan: Pros: Cons: Monocrystalline. Black solar panel. Most efficient for domestic households. 18 - 24%. Most efficient commercially available panels. 25 - 40 years . Most efficient . Most expensive. Polycrystalline. Blue mosaic look. 13 - 16%. 25 - 30 years. Moderately



When considering the cost of solar panel installation in Ireland, it's important to keep in mind various factors such as the size of your home or business, energy consumption habits, location, and type of system installed. Cost of Solar Panel Installation in Ireland



This guide is aimed at Clients either planning or undertaking installation of Photovoltaic (PV) systems on "Large Scale" buildings. These are typically owned by organisations from the public

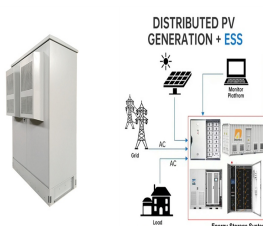
REQUIREMENTS FOR PHOTOVOLTAIC PANEL INSTALLATION LINES



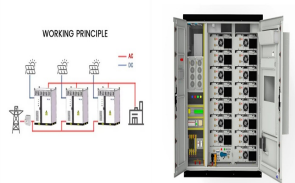
In addition to building regulations approval, solar panel installations in the UK must comply with the Microgeneration Certification Scheme (MCS) standards. MCS is an internationally recognized quality assurance ???



PV systems can be connected to the local electricity lines system (that is, "grid connected"), whether or not there is battery storage. On a grid-connected PV system, the panels can be angled to generate the most electricity during summer when the sun is higher in the sky ??? since this maximises the total annual amount of generated



PV solar system installers must know PV labeling requirements to ensure the system complies with electrical standards. Learn PV labeling requirements here. Where To Get Solar Panel Labels and Placards. Get ???



While solar panel installation is the most noticeable part of a solar energy system, it's important to remember that there's more to a solar installation than the panels on the roof. Inverters ??? Solar panels create direct-current ???



National Electrical Code . NEC 690 defines electrical safety requirements for PV systems. Equipment grounding required: Exposed non-current-carrying metal parts of PV module frames, electrical equipment and conductor enclosures must be grounded. Structure as equipment grounding conductor: Devices listed and identified for grounding the metal frames ???

REQUIREMENTS FOR PHOTOVOLTAIC PANEL INSTALLATION LINES



Additionally, a junction box may be installed if your solar design includes points where multiple lines of conduit intersect or any transitions from outdoor to indoor conduit. Types of Conduits for Solar Panels. While there are multiple types of ???



a. The kW rating of the solar PV system and whether it is a utility interactive, stand-alone, or ground mount system; b. Complete electrical calculations for the proposed solar PV system; c. Single line diagram of the electrical installation which includes the solar PV panel layout, PV power



Rack Mounted Photovoltaic System - Photovoltaic system on a rack with a space above the roof system. Typical area: 200 to 400 square feet. Solar Photovoltaic System - The total components and subsystems that, in combination, convert solar energy into electric energy suitable for connection to a utilization load. String -



There are a large number of formally approved solar panel installations in conservation areas, including on roofs that face the road. This is the case if your solar panels: Do not meet the PD requirements set out in the above section; Your solar panel system must comply with building regulations in terms of structural integrity



Indirect Connection means the connection of a renewable energy installation to a supply line indirectly through the internal distribution 1.1 The use of solar photovoltaic (PV) panel systems has grown significantly in Malaysia since the Feed in Tariff ("FiT") mechanism been introduced under understanding the solar PV system

REQUIREMENTS FOR PHOTOVOLTAIC PANEL INSTALLATION LINES



the mounted aluminum framed PV panels (i.e., other PV technologies or ground mount systems), EPA recommends that an installer certified by the North American Board of Certified Energy Practitioners (NABCEP) determine the ideal system for the project's unique building environment.



A solar panel system comes with significant upfront costs, but when done right, it'll pay in the end. To get the most out of your system, ensure your home can accommodate solar panels before installing them on your roof. Your solar company should know the restrictions and requirements of your state and handle this paperwork. Solar loans



Fig ??? 100A, 12-48V, Max 170A, 150V, MPPT Charge Controller (3) Battery. Batteries are used for backup charge storage. there are different types of batteries used in solar power system for storage and backup operation at overnight when the direct power from solar panels are not available. Series, parallel or series-parallel connection of batteries bank is ???



The technical requirements for interconnecting a customer-owned generator are listed in a technical document (usually called Electrical Service Requirements) that the utility company publishes. Both have been 125A panels and the PV system required a 40AMP breaker which is not allowed on a 125A main. When doing a line side connection



vertical projection of the solar panel/collector shall be included in the analysis. 6. Where the solar panel/collector surface inhibits superimposed concentrated loads, the weight of the collector may replace up to half of the code required live loads. 7. Since maintenance of solar energy devices is not required in the same manner as general

REQUIREMENTS FOR PHOTOVOLTAIC PANEL INSTALLATION LINES



Your installer must gain building regulations approval from your local authority for their solar panel system plan before they can proceed. They will have to prove your roof can comfortably support the weight of your chosen ???



i) Ensure that the installation of PV module is in accordance to the PV single line diagram that has been approved and endorsed by a LEW of the appropriate class and to conduct open circuit voltage (V_{oc}) measurement immediately on



A well-regulated installation lowers risks, makes it easier to find future problems, and helps with insurance claims, ensuring everything runs smoothly and safely. The Impact of Compliance and Safety Ensuring that your solar system meets safety rules, especially those about electricity, greatly reduces the risk of accidents.

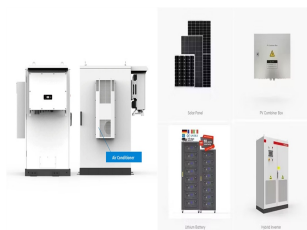


Domestic solar panel installations are considered to have permitted development under the UK planning law. This means that planning permission is not required to install solar panels. This law was changed in 2023 to encourage homeowners to use more ???



Solar panels are now an option for most homes. According to the Solar Energy Industries Association, more than 2 million PV installs are in the USA. The rapid growth is due to the many benefits these units bring. PV and solar panels help reduce your energy bills and combat the emission of greenhouse gases.

REQUIREMENTS FOR PHOTOVOLTAIC PANEL INSTALLATION LINES



Understanding Section 712 of BS 7671 is crucial for qualified electricians working on solar panel installations. It provides a framework for safe and compliant electrical connections between PV systems and your building's electrical system. Earthing and Bonding Requirements for Solar Panel Systems in BS 7671 ??? Section 712



Solar Panels perform at optimum capacity when placed in direct sunlight. When you install your Solar Power system, try to position your photovoltaic panels directly under the noontime sun for maximum efficiency ???



Your solar panel system has to be isolated from your mains electricity, so engineers are able to safely perform maintenance and servicing whenever your system needs it. They must protect against overvoltage and overcurrent by using the appropriate fuses and circuit breakers, which helps the system avoid damaging itself or the building.



Solar panel installations have to pass standard building regulations for the property - it's a legal requirement for many home improvements. The key areas are structural safety of a building (Part A) and electrical safety of a building ???



See also: How Long Does it Take to Install Solar Panels? A Complete Guide. Step 6: Ground the System, including the Panels and the Mounting System. See also: DIY Solar Panel Installation: A Comprehensive ???

REQUIREMENTS FOR PHOTOVOLTAIC PANEL INSTALLATION LINES



Next, it discusses aspects of solar panel cleaning and site security. The final section provides information on warranty issues. Note that the basis for all solar panel operations and maintenance should be consultation with professional solar companies for advice, and to consider the specific needs for each system on a site-by-site basis. 1.1.



How to Install Solar Panels at Home? Are you considering installing solar panels at home to harness renewable energy and save on electricity bills? In this guide, we will take you through a detailed step-by-step ???