

# REQUIREMENTS FOR WELDING AND INSTALLING PHOTOVOLTAIC PANELS



Do solar panels need Building Regulations approval? Building regulations approval is mandatory for solar panel installations in the UK. The approval process ensures compliance with safety, structural, and electrical standards. It verifies that the installation is carried out by competent installers and that all relevant regulations are adhered to.



Can I install solar panels if I don't meet building regulations? Your local authority can also apply for a Confiscation Order to take away any money you've earned with your system so there's absolutely no benefit to installing solar panels that don't meet building regulations. It's crucial that your solar installation follows all building regulations.



How do I ensure compliance with building regulations for solar panel installations? To ensure compliance with building regulations for solar panel installations, follow these essential steps: Engaging a Qualified Installer: It is crucial to engage a reputable and qualified installer who is knowledgeable about building regulations and experienced in solar panel installations.

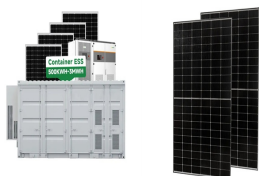


Do you need planning permission to install solar panels on your roof? An increasing number of people are investing in solar energy. More and more homes are having solar panels, or solar tiles, installed on their roofs. Of course, with such installations, the topic of planning permission and building regulations often comes to the surface.



What are the requirements for solar panel installation? Site enforcement action by HSE inspectors? Solar panel installation is not short duration work and will need scaffolding or similar equipment. It should have a boarded working platform and full edge protection (double guard-rails and toe-boards) to stop people and tools from falling. Debris netting may also be necessary to prevent materials

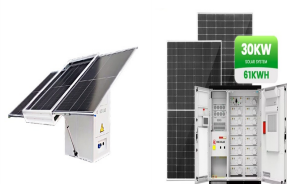
# REQUIREMENTS FOR WELDING AND INSTALLING PHOTOVOLTAIC PANELS



What are the requirements for a PV installation? Virtually all domestic PV installations will fall under the scope of Part P. Part P requires the relevant Building Control department to be notified and approve the work. There are two routes to comply with the requirements of Part P: Notify the relevant Building Control department before starting the work.



Busbar welding tapes can be divided into: 1. Stacked tile welding tape Suitable for stacked tile modules, this type of tape is thin and low strength, high density of stacked tile modules, can be flipped to achieve a small version without ???



these should help identify. Next, it discusses aspects of solar panel cleaning and site security. The final section provides information on warranty issues. Note that the basis for all solar panel operations and maintenance should be consultation with professional solar companies for advice, and to consider the specific needs for each



6 CleAn enerGy StAteS AlliAnCe S StAinAIE SOLAr EcAtiOn prOEct inspectors, permitting staff, fire marshals, and other personnel lack the training and other support to correctly and consistently apply code standards.



Your installer must gain building regulations approval from your local authority for their solar panel system plan before they can proceed. They will have to prove your roof can comfortably support the weight of your chosen ???

# REQUIREMENTS FOR WELDING AND INSTALLING PHOTOVOLTAIC PANELS



NABCEP, or the North American Board of Certified Energy Practitioners, is one of the leading certifiers for solar panel installation. The Solar Rating Certification Corporation or SRCC is another. The following states require a dedicated certification by these or other agencies:



In 2023, installing a 4kW solar panel system would set you back at least \$7,000. Fast forward to today, November 2024, and that price has dropped closer to \$6,000??? resulting in a 16% dip since May 2023. and the ???



The Solarclue Blog is created to update the customers with a clear picture of the latest solar news and products, general informations, projects and offerings from Solarclue . SolarClue is India's one-stop online marketplace in Solar Industry and its vision is to enhance the growth of the solar industry by giving customers and dealers, ???



Photovoltaic (PV) panels convert absorbed sunlight energy to electricity. They make no noise, produce no emissions and can be mounted on an existing building or on a separate frame. Installation requirements. AS/NZS 4777.2: Grid connection of energy systems via inverters - Part 2: Inverter requirements. Maintenance. Full and clear written



Additionally, the initial cost of installing a solar power system can be high, although this can be offset by long-term energy savings. Tesla's solar power systems consist of PV panels, an inverter, and a Powerwall battery for energy storage. ensuring that it meets the specific welding requirements and offers good value for money.

# REQUIREMENTS FOR WELDING AND INSTALLING PHOTOVOLTAIC PANELS



1. Solar photovoltaic panels supported by a structure with no potential use underneath shall not constitute an additional story or additional floor area and may exceed the height limit when constructed on a roof top of a building. 2. Solar photovoltaic panels supported by a structure over parking stalls shall not constitute an



Domestic Solar Photovoltaic ??? Code of Practice for Installers 4.

Component and Installation Requirements 4.1. All Components All equipment and/or components of the PV systems must carry a valid CE mark as required by the



The issue with installing self-made DIY solar panels is that many of these certified engineers will refuse to certify solar panel units that they did not personally install. In order to qualify for the Smart Export Guarantee (SEG), your solar panels must be installed by a Microgeneration Certification Scheme (MCS) recognized installer.



Suppose, in our case the load is 3000 Wh/per day. To know the needed total W Peak of a solar panel capacity, we use PFG factor i.e. Total W Peak of PV panel capacity =  $3000 / 3.2 \text{ (PFG)} = 931 \text{ W Peak}$ . Now, the required number of PV panels are =  $931 / 160\text{W} = 5.8$ . This way, we need 6 numbers of solar panels each rated for 160W.



Assuming a derating factor of 85%, the solar panel capacity needed would be: Solar Panel Capacity =  $37.5 \text{ kWh} / 5 \text{ hours} = 7.5 \text{ kW}$ . Considering the derating factor, the actual solar panel capacity would be: ???

# REQUIREMENTS FOR WELDING AND INSTALLING PHOTOVOLTAIC PANELS



To ensure a successful solar panel installation, engage a qualified installer, seek planning permission if required, and obtain building regulations approval. By following these steps, you can harness the power of ???



Installation and safety requirements for photovoltaic (PV) arrays. on Friday 19 November 2021. With the release of AS/NZS 5033:2021, sections of these Guidelines have been superseded as they have 7 PV ARRAY INSTALLATION 11 7.1 General 11 7.2 Roof mounting (not building integrated) 11 7.3 Free standing PV arrays 12



Solar panel building regulations. Solar panel installations have to pass standard building regulations for the property - it's a legal requirement for many home improvements.. The key areas are structural safety of a building (Part A) and electrical safety of a building (Part P). Your roof must be able to support the additional weight of rooftop panels and the electricals of the ???



Solar Panels perform at optimum capacity when placed in direct sunlight. When you install your Solar Power system, try to position your photovoltaic panels directly under the noontime sun for maximum efficiency ???



Solar photovoltaic panels or modules that are designed to be the roof, span to structural supports and have accessible/occupied space underneath shall have the panels or modules and all supporting structures designed to support a roof photovoltaic live load, as defined in Section CS507.1.1.1 (IBC 1607.13.5.1) in combination with other applicable loads.

# REQUIREMENTS FOR WELDING AND INSTALLING PHOTOVOLTAIC PANELS



Solar panel installation: used to secure panels to mounts. Connecting mount components: for joining various sections when constructing mounting structures. Considerations: Material selection: consider environmental factors such as humidity, salt spray, and temperature changes to select appropriate screw and bolt materials.



Photovoltaic (PV) systems are one of the most important renewable energy sources worldwide. Learning the basics of solar panel wiring is one of the most important tools in your repertoire of skills for safety and practical reasons, after all, residential PV installations feature voltages of up to 600V.



Domestic solar panel installations are considered to have permitted development under the UK planning law. This means that planning permission is not required to install solar panels. This law was changed in 2023 to encourage homeowners to use more ???



The term "solar panel" is often used interchangeably to describe the panels that generate electricity and those that generate hot water. ??? Solar panels that produce electricity are known as solar photovoltaic (PV) modules.



Using a certified installer will make sure that the solar panel system is safe and legally compliant. They can highlight issues like structural problems and any potential disputes with neighbours. FAQs What are the building regulations for solar panel installation? There are certain building regulations you must abide by for solar panel



# REQUIREMENTS FOR WELDING AND INSTALLING PHOTOVOLTAIC PANELS



3. Make space for the solar panel accessories (solar inverter, cables and solar batteries, if desired), for instance in a plant room. 4. Plan a day for installation. 5. Erect the scaffolding (this can be done by your supplier or by a company you organise) 6. The solar panel mounts will be installed. 7. The professionals will install the solar



Are you considering installing solar panels on your property in Ireland? With the government's push towards renewable energy, it's no surprise that more and more people are turning to solar power. But before you jump in, it's important to understand the regulations and standards surrounding solar panel installation in Ireland.???



Introduction This short article is not meant to be a complete guide to the building regulations in relation to installing photovoltaics. Our intention in writing this article is to provide a focus on solar photovoltaics, an area where specific guidance ???



If 6 PV panels are erected on an independent supporting structure and the weight of each PV panel is around 26kg. The weight of the system supported by the structure will be 156kg (i.e. 26kg x 6 PV panels).



DIY Solar Panel Installation is a great way to produce renewable energy and lower your energy bills. Read our guide on how to install solar panels yourself. Check your local planning requirements ??? Roof mounted solar panels don't usually need planning permission. But, if you live in a conservation area, listed building or area of

# REQUIREMENTS FOR WELDING AND INSTALLING PHOTOVOLTAIC PANELS

---



Finding an unshaded spot is best, but sometimes shading is unavoidable. Some solar panel systems can minimise the impact of shading using "optimisers". Solar optimisers help improve the overall performance of your solar panel system. So, if one panel is shaded, it doesn't impact how much electricity the other panels can generate.



Sika(R) SolarMount-1 (SSM1) - an aerodynamic, non-penetrating and lightweight mounting system specially designed for the installation of rigid photovoltaic (PV) panels to flat rooftops, covered with Sika roofing membrane. The key component is the Sika-designed "Sika SolarClick" fastener, which is produced of compounds perfectly matching Sika's PVC and FPO membranes and is ???



Simple ??? 1 and 2 Stage Charge Controllers: Relay and shunt resistor are used to control the voltage in single or two stages to disconnect the solar panel from the battery in case of over voltage. PWM (Pulse Width Modulation) ??? 3 Stage Charge Controllers: It based on pulse with modulation and cutoff the battery circuit from the connected solar panel from the photo ???