

ROAD SHOT OF WIND TURBINE BLADES BEING TRANSPORTED



How do giant turbines travel on rural roads? They have become a familiar and striking sight on the Scottish Borders landscape over the past few months. Giant turbine blades are being slowly transported through the region to the Pines Burn wind farm about five miles (8km) south of Hawick.



Where are giant turbine blades being transported? Giant turbine blades are being slowly transported through the region to the Pines Burn wind farm about five miles (8km) south of Hawick. In order to shorten the length of the load, special blade lifters are used for the final stretch of their journey from St Boswells to the construction site.



How to transport wind turbine blades in a mountain wind farm? Considering the particularity of wind turbine blade trailer length, the currently constructed mountain wind farm transport generally use wind turbine blade transportation combined with high-power tractor to complete the transportation of wind turbine blades.



Are these the biggest wind turbine blades ever transported by road? ??? These are the biggest wind turbine blades to ever be transported by road in Western Australia, ??? said Alinta Energy ???s head of construction Timothy Knill. ??? Most people have no concept of just how big these things are, and therefore how tricky it can be to get them from a port to site.



Where are wind turbines being built in Scotland? A number of turbines are being constructed at the Pines Burn wind farm, eight miles (13km) south of the town. Small roads in the Scottish Borders mean turbine blades have to be transported to a wind farm pointing upwards.

ROAD SHOT OF WIND TURBINE BLADES BEING TRANSPORTED



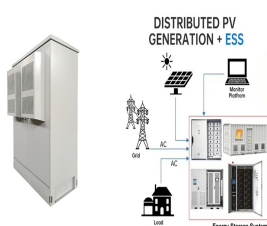
How do turbine blades work? The 65m (210ft) turbine blades land in Scotland at Rosyth and make the first part of their journey by more standard carriers. They then switch to the lifters which tilt them at an angle in order to cope with the roads which lie ahead.



What is being transported? Wind turbines are made up of several components which are transported separately because of their size. These include: Blades: turbines typically have 3 blades; Hubs: connect the blades to the main tower; Nacelles: these are the large "box" at the hub of the wind turbine and contain the generator and powertrain



Find the perfect wind turbine blade transport stock photo, image, vector, illustration or 360 image. A 45 metre long wind turbine blade being transported under police escort. The vehicle has travelled from the Port of Liverpool and is approaching junction 14 of the M56 motorway where it will exit to the Frodsham Wind Farm project currently

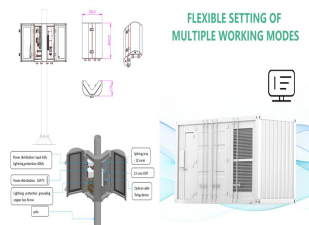


The wind business is ultimately a logistics business. Worldwide Aeros Corp. (Aeros), a Southern California-based international aircraft company, is proposing that its logistics product, the Aeroscraft, will provide wind power ???



"That's usually the blade, because of its overall length." Collett & Sons is currently using Super Wing Carriers built by Nooteboom and Wing-Max by Faymonville to transport turbine blades, which have been specifically designed for the task. But as wind turbines continue to increase in size, these will become obsolete.

ROAD SHOT OF WIND TURBINE BLADES BEING TRANSPORTED



The first #HighCapacityFactor V163-4.5 MW??? blades manufactured at Vestas Windsor Blades factory in Colorado have been transported via railway. Measuring 80.5 meters (264 feet), these are the ???



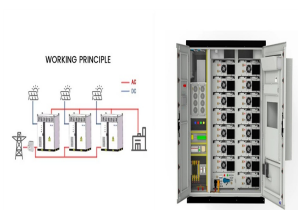
According to Mustafa and Al-Mahadin [29], in many cases, new roads are built so that wind turbines can be transported and installed in rural areas. However, in other cases it is necessary to



The world's largest aircraft is being custom-built to carry a very particular type of cargo: wind turbine blades. With its 108-meter length, Radia's WindRunner, once it comes into operation in 2027, will dwarf even the much-mourned, previous record-holder, the destroyed Antonov AN-225 Mriya.



Inset: A wind turbine blade being transported on NSW roads earlier this year. Photos: Transport for NSW. Facebook; Twitter; Pinterest; LinkedIn; With funding for a much-needed bypass still under review, a local ???



This experience with wind turbine transportation has given us the knowledge and resources needed to create end-to-end solutions for all types of cargo related to wind energy. Wind energy logistics services. Planning, execution and monitoring; Risk assessments and operational manuals; Transport of wind turbines, blades and windmills

ROAD SHOT OF WIND TURBINE BLADES BEING TRANSPORTED



Find Transport Wind Turbine Blade stock images in HD and millions of other royalty-free stock photos, illustrations and vectors in the Shutterstock collection. Scotland - April 05 2017: Large wind turbine rotor blade being transported from Kyle of Lochalsh harbour by road using a lorry with articulated telescopic trailer Chile; 2021



On February 10th, Ryan McGee and his drone captured the journey of one of the 21 blades that were being transferred to Pine Burns Wind Farm in Hawick, Scotland. The footage provides an ???



Typically, a wind turbine has three blades moving about a horizontal axis, which produce kinetic energy as they rotate. Each of these blades ranges in length from 5 metres to well over 100 metres and weighs several tens of tonnes. Considering that a wind farm can have more than 100 wind turbines, each with its own three blades, transporting these important wind giants is no ???



The generating capacity of wind turbines have doubled from 1.5 to 3 megawatts in recent years. These days the size of a wind turbine can be 100 meters or more. The turbines are getting heavier, the rotor blades longer and the tower components larger. The nacelle, the hub and the blade may easily weigh over 75, 24 and 9 tons respectively.



A turbine blade being taken round the corner at the top of Station Road. Picture: Peter Sutherland, Golspie. Deliveries of large turbine parts for Camster II wind farm are under way ??? making use of road-widening work that has involved the demolition of a cottage in Wick.

ROAD SHOT OF WIND TURBINE BLADES BEING TRANSPORTED



Atacama, Chile; 2021: Aerial view of trucks transporting wind turbine blades along the road next to a wind farm, with mountains in the background and blue sky with clouds. August 10, 2008: A massive wind turbine blade being transported to a wind farm on a truck became bogged down in the mud when the trailer hauling it went off the roadbed



They have become a familiar and striking sight on the Scottish Borders landscape over the past few months. Giant turbine blades are being slowly transported through the region to the Pines Burn



Video footage of one turbine part being taken to a wind farm in the Scottish Borders has gone viral, with a huge 65-meter (over 213-foot) blade needing to be transported almost vertically to avoid buildings, lamp posts, and ???



A 45 metre long wind turbine blade being transported under police escort. The vehicle has travelled from the Port of Liverpool and is approaching junction 14 of the M56 motorway where it will exit to the Frodsham Wind Farm project currently under construction. Several special transport trucks on the road transporting wind turbine blades



The 64m long turbine blades, as well as other major turbine components including towers and nacelles, will be transported from the Port of Ayr to South Kyle Wind Farm near Dalmellington this

ROAD SHOT OF WIND TURBINE BLADES BEING TRANSPORTED



Over-the-Road Transport. Specialized stretch blade trailers are required to haul any wind-turbine blade, but there is a limited number of trailers available long enough to transport 57-plus-meter blades. Most blade trailers were originally purchased and designed for double transport of 40-meter blades, which was the industry standard until 2011.



The arrival of the turbines needs to be carefully orchestrated. Not only are the turbines very heavy and very long ??? even when delivered as separate components. But the site is up a steep and windy six-mile road through the Burnfoot Hills. So it's a complicated operation getting a 55m-long lorry up to where the turbines will be based!



Find Wind Turbine Blade Transport stock images in HD and millions of royalty-free photos, illustrations, and vectors on Shutterstock. 3,183 Wind Turbine Blade Transport photos for download. trucks transporting large windmill blades is parked by autumn paddy fields on a rural road, the wind turbine blade is designed to capture the energy



The FTV 500 blade transporter holds the turbine blade at the hub connection, enabling them to be hydraulically raised to an angle of up to 60 degrees. Goldhofer said this enables rotor blades to be transported to locations that are inaccessible with normal semitrailers.



The reason wind turbine blade transport is costly and time-consuming is due to the size and weight of this type of freight. Wind turbines are extremely long, with many of them stretching 116 feet in length on average. In some cases, wind turbine blades can be as long as 200 feet. Length isn't the only reason wind turbines are considered

ROAD SHOT OF WIND TURBINE BLADES BEING TRANSPORTED



In July 2023, a very special transport took place in the Amsterdam port area. With the help of a convoy of trucks, wind turbine blades with a total transport length of about 95 meters per truck were transported. Quite a challenge, but it ran smoothly thanks to the collaboration between TMA Logistics, Van der Vlist [???



As part of the latest "Climate Action Plan 2023" the demand for wind turbines to generate clean energy is on the rise. Recently, the ORS Infrastructure Team undertook a pivotal project focused role on evaluating the optimal Turbine Delivery Route to transport a 79.35m long wind turbine blade from Rosslare Europort to its destination in Co. Wicklow.



As part of the latest "Climate Action Plan 2023" the demand for wind turbines to generate clean energy is on the rise. Recently, the ORS Infrastructure Team undertook a pivotal project focused role on evaluating the optimal Turbine ???



Turbine bladesfor a wind turbine being transported to the construction site by truck. Atacama, Chile; 2021: Aerial view of trucks transporting wind turbine blades along the road next to a wind farm, with mountains in the background and blue sky with clouds. Save. a ship carrying wind turbine blades at sunset. Save. wind turbines under



The turbine blades, which are just under 75 metres long and weigh 24 tonnes, are being transported one per truck, with a convoy of three trucks delivering the blades for one turbine at a time.