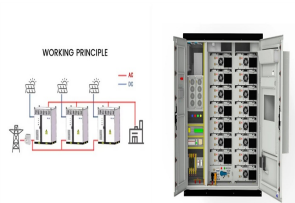


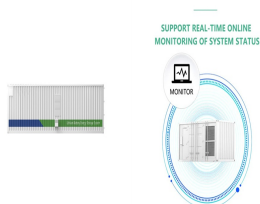
SECOND-HAND FLYWHEEL ENERGY STORAGE



In 2016, during the debugging process of a flywheel energy storage system used in the steamer, the vacuum pressure was higher than the specified vacuum condition required for normal operation of the equipment (which should be maintained at 5-20 Pa). The high-speed rotating flywheel rotor rubs against the air and generates heat, causing



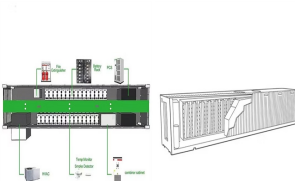
The flywheel energy storage system (FESS) offers a fast dynamic response, high power and energy densities, high efficiency, good reliability, long lifetime and low maintenance requirements, and is



Energy storage flywheel systems are mechanical devices that typically utilize an electrical machine (motor/generator unit) to convert electrical energy in mechanical energy and vice versa. Energy is stored in a fast-rotating mass known as the flywheel rotor. The rotor is subject to high centripetal forces requiring careful design, analysis, and fabrication to ensure the safe a?|

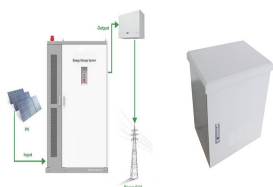


Ask the Chatbot a Question Ask the Chatbot a Question flywheel, heavy wheel attached to a rotating shaft so as to smooth out delivery of power from a motor to a machine. The inertia of the flywheel opposes and moderates fluctuations in the speed of the engine and stores the excess energy for intermittent use. To oppose speed fluctuations effectively, a flywheel is a?|

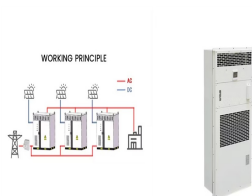


A flywheel is not a flying wheel, though if things go sideways, it's possible to find flywheels mid-air. Flywheels are devices used to store energy and release it after smoothing eventual oscillations received during the charging process. Flywheels store energy in the form of rotational energy.. A flywheel is, in simple words, a massive rotating element that stores a?|

SECOND-HAND FLYWHEEL ENERGY STORAGE



Energy storage systems (ESSs) are the technologies that have driven our society to an extent where the management of the electrical network is easily feasible. The balance in supply a?|



specific energy, 85% round trip efficiency for a 15 year, LEO application a?c A sizing code based on the G3 flywheel technology level was used to evaluate flywheel technology for ISS energy storage, ISS reboot, and Lunar Energy Storage with favorable results.



Flywheels with the main attributes of high energy efficiency, and high power and energy density, compete with other storage technologies in electrical energy storage applications, as well as in transportation, military a?|



Flywheel energy storage systems. In 2022, the United States had four operational flywheel energy storage systems, with a combined total nameplate power capacity of 47 MW and 17 MWh of energy capacity. Two of the systems, one in New York and one in Pennsylvania, each have 20 MW nameplate power capacity and 5 MWh of energy capacity. They report



The flywheel energy storage systems all communicate with a cluster master controller through EtherCAT. This protocol is used to ensure consistent low latency data transfer as is required for fast response times, which is <4ms to bus load changes. MODES OF OPERATION. There are 3 modes:

SECOND-HAND FLYWHEEL ENERGY STORAGE



The flywheel energy storage system (FESS) offers a fast dynamic response, high power and energy densities, high efficiency, good reliability, long lifetime and low maintenance requirements, and is particularly suitable for applications where high power for short-time bursts is demanded. FESS is gaining increasing attention and is regarded as a



Energy storage technology is becoming indispensable in the energy and power sector. The flywheel energy storage system (FESS) offers a fast dynamic response, high power and energy densities, high efficiency, good reliability, long lifetime and low maintenance requirements, and is particularly suitable for applications where high power for short-time a?]



Flywheel energy storage systems can be mainly used in the field of electric vehicle charging stations and on-board flywheels. Electric vehicles charging station: The high-power charging and discharging of electric vehicles is a high-power pulse load for the power grid, and sudden access will cause the voltage drop at the public connection point



An overview of system components for a flywheel energy storage system. Fig. 2. A typical flywheel energy storage system [11], which includes a flywheel/rotor, an electric machine, bearings, and power electronics. Fig. 3. The Beacon Power Flywheel [12], which includes a composite rotor and an electric machine, is designed for frequency



For utility-scale storage a "flywheel farm" approach can be used to store megawatts of electricity for applications needing minutes of discharge duration. How Flywheel Energy Storage Systems Work. Flywheel energy storage systems (FESS) employ kinetic energy stored in a rotating mass with very low frictional losses.

SECOND-HAND FLYWHEEL ENERGY STORAGE



Here is the integral of the flywheel's mass, and is the rotational speed (number of revolutions per second).. Specific energy. The maximal specific energy of a flywheel rotor is mainly dependent on two factors: the first being the rotor's geometry, and the second being the properties of the material being used. For single-material, isotropic rotors this relationship can be expressed as [9]



Professor of Energy Systems at City University of London and Royal Academy of Engineering Enterprise Fellow, he is researching low-cost, sustainable flywheel energy storage technology and associated energy technologies. Introduction Outline Flywheels, one of the earliest forms of energy storage, could play a significant



In the field of flywheel energy storage systems, only two bearing concepts have been established to date: 1. Rolling bearings, spindle bearings of the 'High Precision Series' are usually used here.. 2. Active magnetic bearings, usually so-called HTS (high-temperature superconducting) magnetic bearings.. A typical structure consisting of rolling a?



Flywheel Energy Storage Systems are used in a wide range of applications, including grid-connected energy management and uninterruptible power supply. With the advancement of technology, the FESS application is undergoing rapid renovation. High-powered weapons, airplane powertrains, and shipboard power systems are examples of systems that

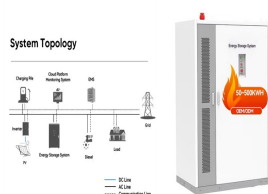


converter, energy storage systems (ESSs), flywheel energy storage system (FESS), microgrids (MGs), motor/generator (M/G), renewable energy sources (RESs), stability enhancement 1 | INTRODUCTION These days, the power system is evolving rapidly with the increased number of transmission lines and generation units

SECOND-HAND FLYWHEEL ENERGY STORAGE



Flywheel energy storage (FES) is a technology that stores kinetic energy through rotational motion. The stored energy can be used to generate electricity when needed. Flywheels have been used for centuries, but modern FES systems use advanced materials and design techniques to achieve higher efficiency, longer life, and lower maintenance costs.



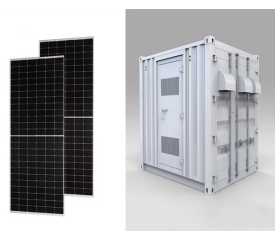
The flywheel energy storage system (FESS) offers a fast dynamic response, high power and energy densities, high efficiency, good reliability, long lifetime and low maintenance a?]



When this energy needs to be retrieved, the rotor transfers its rotational energy back to a generator, effectively converting it into usable electrical energy. The anatomy of a flywheel energy storage device. Image used courtesy of Sino Voltaics . A major benefit of a flywheel as opposed to a conventional battery is that their expected service

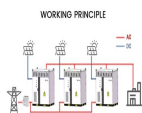


Flywheel energy storage is a promising technology for replacing conventional lead acid batteries as energy storage systems. Most modern high-speed flywheel energy storage systems (FESS) consist of a huge rotating cylinder supported on a stator (the stationary part of a rotary system) by magnetically levitated bearings.



Today, flywheel energy storage systems are used for ride-through energy for a variety of demanding applications surpassing chemical batteries. A flywheel system stores energy mechanically in the form of kinetic energy by spinning a mass at high speed. Electrical inputs spin the flywheel rotor and keep it spinning until called upon to release

SECOND-HAND FLYWHEEL ENERGY STORAGE



One energy storage technology now arousing great interest is the flywheel energy storage systems (FESS), since this technology can offer many advantages as an energy storage solution over the



The flywheel schematic shown in Fig. 11.1 can be considered as a system in which the flywheel rotor, defining storage, and the motor generator, defining power, are effectively separate machines that can be designed accordingly and matched to the application. This is not unlike pumped hydro or compressed air storage whereas for electrochemical storage, the a?|



For utility-scale storage a "flywheel farm" approach can be used to store megawatts of electricity for applications needing minutes of discharge duration. How Flywheel Energy Storage Systems Work. Flywheel energy storage systems (FESS) employ kinetic energy stored in a rotating mass with very low frictional losses.



Description of Flywheel Energy Storage System 2.1. Background The flywheel as a means of energy storage has existed for thousands of years as one of the earliest mechanical energy storage systems. For example, the potter's wheel was used as a rotatory object



Flywheel energy storage systems (FESSs) have proven to be feasible for stationary applications with short duration, i.e., voltage leveling [7], frequency regulation [8], and uninterruptible power supply [9], because they have a long lifespan, are highly efficient, and have high power density [10].

SECOND-HAND FLYWHEEL ENERGY STORAGE



This concise treatise on electric flywheel energy storage describes the fundamentals underpinning the technology and system elements. Steel and composite rotors are compared, including geometric effects and not just specific strength. A simple method of costing is described based on separating out power and energy showing potential for low power cost a?|



Flywheel Energy Storage (FES) systems refer to the contemporary rotor-flywheels that are being used across many industries to store mechanical or electrical energy. Instead of using large iron wheels and ball bearings, advanced FES systems have rotors made of specialised high-strength materials suspended over frictionless magnetic bearings



As a clean energy storage method with high energy density, flywheel energy storage (FES) rekindles wide range interests among researchers. Since the rapid development of material science and power electronics, great progress has been made in FES technology. Material used to fabricate the flywheel rotor has switched from stone,



Thanks to the unique advantages such as long life cycles, high power density and quality, and minimal environmental impact, the flywheel/kinetic energy storage system (FESS) is gaining steam recently.