

SEMI-AXLE PHOTOVOLTAIC PANEL INSTALLATION



Finding an unshaded spot is best, but sometimes shading is unavoidable. Some solar panel systems can minimise the impact of shading using "optimisers". Solar optimisers help improve the overall performance of your solar panel system. So, if one panel is shaded, it doesn't impact how much electricity the other panels can generate.



The main difference between 10-year plans and 5-year plans are mainly the proportion of upfront costs required to be paid, as well as the length of workmanship warranty attached, which comes with complimentary servicing and free maintenance. 5-year plans come with a 50% upfront cost, as well as shorter workmanship warranty, but are cheaper overall a?|



Type of solar panel: Description: Average efficiency rating: Average lifespan: Pros: Cons: Monocrystalline. Black solar panel. Most efficient for domestic households. 18 - 24%. Most efficient commercially available panels. 25 - 40 years . Most efficient . Most expensive. Polycrystalline. Blue mosaic look. 13 - 16%. 25 - 30 years. Moderately



As a general guide. On a sunny day, a 100W solar panel will produce approximately 4-5 amps per hour in full sun. This means that the solar panel would take around 18-25 hours to charge a fully discharged 100AH 12v a?|



Section 2: The Photovoltaic PV System Design Process Solar Panel Placement. Effective PV system design involves strategic solar panel placement. Aim for maximum sun exposure all year round, considering the seasonal changes in the sun's trajectory. Commonly, this means south-facing panels in the northern hemisphere. System Sizing

SEMI-AXLE PHOTOVOLTAIC PANEL INSTALLATION



Our new generation of semi flexible panels give you the freedom to travel off grid, even in the remotest of places without a power source nearby. Truma semi flexible solar panels are highly efficient for motorhomes, caravans and van conversions even those with a pop up roof! Using a?



80w Select Solar Narrow Semi Flexible Solar Panel: 06009SS80: 80.00: 1365 x 350: GBP161.08: GBP25.00: Buy Now : 100w Select Solar Narrow Semi Flexible Solar Panel: 06009SS100: 100.00: 1520 x 350: GBP198.16: GBP25.00: Buy Now : 130w a?]



Our new generation of semi flexible panels give you the freedom to travel off grid, even in the remotest of places without a power source nearby. Truma semi flexible solar panels are highly efficient for motorhomes, caravans and van conversions even those with a pop up roof! Using the sun's power to provide a reliable source of electricity is not only convenient for wild camping a?]



The Renogy 100w Flexible Monocrystalline Solar Panel is the best selection in this range. It has dependable performance and adaptability, bending up to 248 degrees. Other 100w products include the Giaride Flexible Solar Panel and the ALLPOWERS Flexible Solar Panel. The former bends to 30 degrees, and the latter has high-efficiency solar cells.



A typical 4kW solar panel system for 2-3 bedroom houses costs GBP5,000 - GBP6,000 with installation. Added together, the total cost of solar panels and a battery in the UK is GBP13,000 - GBP15,500. Added together, the total cost of solar panels and a battery in the UK is a?]

SEMI-AXLE PHOTOVOLTAIC PANEL INSTALLATION



3. Semi-rigid walkable solar panels. Walkable, semi-rigid solar panels are last but most definitely not least. These panels are our top choice for versatile, simple-to-install solar power. When it comes to semi-rigid panels, keep the following in mind: Flexibility/Size. While semi-rigid panels can bend, they do so considerably less so than semi



Medium to Large Semi/Detached; Solar Panel System Power: 1kW to 1.5kW: 2kWp to 2.5kW: 3kW to 4kW: Installation Cost: GBP2,500 - GBP3,000: GBP4,000 - GBP6,000: GBP5,000 - GBP9,000: We've done our best to give you a good a?|



For a 3-bed semi-detached house with a solar array size of 3 kWp (7 x 429w panels), the cost after the SEAI grant is a?!5,880. In this case: Solar panel installation prices in Ireland can vary depending on the project's complexity, location, and the solar installer you choose. These costs may include labour, permits, and equipment.



Read our article to discover all you need to know about solar panel installation and maintenance prices in Malaysia! Semi-detached Houses: If you've got a semi-detached house, you can go for roughly 16 solar panels a?|



Factors affecting your solar panel installation cost. As you can probably tell, there's no easy answer as to exactly how much your solar panel installation will cost. Instead, your overall cost will depend on a number of factors. Here are the key ones: Type of panels. Solar PV panels consist of semi-conducting silicon-based cells covered in

SEMI-AXLE PHOTOVOLTAIC PANEL INSTALLATION



a?? Panels are semi-flexible so can be slightly flexed without cell damage unlike conventional panels . a?? Corners are rounded with cut out eyelets for safe and easy installation. PV Module Type / Peak Power: Dimensions (mm) a?|



W Flexible Solar Panel, 12 Volt Semi-Flexible Solar Panels Bendable Mono Off-Grid Solar Power PV Panel for Marine, Motorhome, Cabin, Van, Car and Uneven Surfaces : Amazon .uk: DIY & Tools a??Ready for Installationa?? Renogy Solar Panel comes with pre-drilled mounting holes and 2.3 feet long solar connector cables for quick and



Our solar panel installation guide will walk you through how the solar panel installation process works. We use cookies on this website. For the average house, for example a 3-Bed Semi-Detached, you will generally need solar panels of a rated capacity of 4.10 kW. This will usually only take a day or less to get them fully installed and working.



Solar panel costs are decreasing. According to the latest UK government data [1], the cost of solar panels in the UK is at its lowest level in almost 2 years fact, between March 2023 and 2024, the median cost per a?|

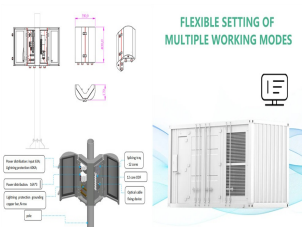


Our commercial transportation kits are tailored for effortless installation on heavy-duty vehicles, such as semi trucks, coaches, tractor-trailers, and more. Customer Benefits. Increase Profits. All RWP kits come with our Merlina?c panel(s) with patented technology, an optimized solar charge controller, cables, and other accessories.

SEMI-AXLE PHOTOVOLTAIC PANEL INSTALLATION



During the installation, the photovoltaic panels are arranged in an oblique plane, with an angle of thirty degrees to the horizontal plane. The reserved bases, holes, and pre-buried parts



using tinted semi-transparent solar panels (i.e., GU-PV). For the second season (2019), spinach seeds were sown in 6 GUs, three Figure 1. Agrivoltaics for food and energy double-generation implemented with tinted semi-transparent solar panel. A) Solar radiation spectrum in the visible range at the ground level. B) Absorption spectrum



Case Study: solar panel installation for an average UK home a?c House type: Semi-detached a?c Solar panels: polycrystalline 4kW a?c Number of panels: 10-14 a?c Solar panel cost, including installation: GBP7000.00 (Actual price a?)

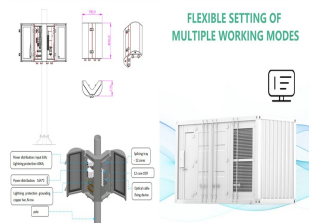


How long does a solar panel installation take? Solar panel installation usually takes one to two days, but larger installations a?? over 14 panels a?? can take up to four days. Much of this time is taken up with constructing the scaffolding, so don't be concerned if it's been a few hours and there still aren't panels on the roof.



We've heard from people installing solar panels on bungalows and terraces, as well as semi-detached and detached houses. If your main house roof is unsuitable (a thatched roof, for example), solar panels can instead be installed a?)

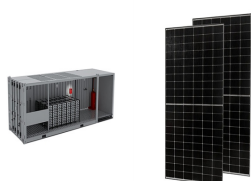
SEMI-AXLE PHOTOVOLTAIC PANEL INSTALLATION



In this step-by-step guide, we'll walk you through everything you need to know about solar PV system installationa??from the initial consultation to the moment your system is a?|



Solar panels could reduce your bills and even earn money by generating electricity you can sell back to your energy company. But the average solar panel system of 3.5kWp will cost around GBP7,000 to install, according to estimates from the Energy Saving Trust.



For example, a traditional 100 watt solar panel weighs in at 7.75 kgs, while a 110 watt semi-flexible solar panel weighs only 2.4 kgs. The semi-flexible panel is only 3 mm thick and so does not cause any windage when the caravan is moving. Much better for your caravans roof! Technology? Beware! The efficiency of a modern semi-flexible solar



Whether you are a homeowner or a business owner, this article will provide valuable information to help you learn about solar panel installation. At Progressture Solar, we have successfully managed over 740 completed and ongoing clean energy projects, resulting in the generation of 78,840MWh of clean energy and the prevention of 59,760 tonnes of carbon a?|

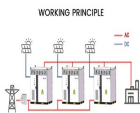


This kit contains everything you'll need to install a semi-flexible solar panel to your caravan, campervan, motorhome or boat. Included is an MPPT controller to make sure you maximise the amount of energy obtained from your solar panels, 5m single core solar cables With MC4 connectors, cable gland and polyurethane adhesive/sealant.

SEMI-AXLE PHOTOVOLTAIC PANEL INSTALLATION



Can I go off-grid with my DIY solar panel installation? Yes, you can go off-grid with your DIY solar panel installation. We have solar panel kits for both on-grid and off-grid use. They are the ideal solution to our energy requirements and a?



2 . Proper installation of semi-flexible solar panels is essential to ensure their optimal performance and longevity. These panels are designed to be lightweight and adaptable to a?