

SHOULD THERE BE GAPS WHEN INSTALLING PHOTOVOLTAIC PANELS



How much gap should be between solar panels? The gap between the last row of solar panels and the roof's edge should be a minimum of 12 inches or one foot. This ensures the panels are accommodated as they expand and contract during the day. See also: Mounting Solar Panels: A Complete Beginner's Guide to Installation How Much Gap Should Be Between Two Solar Panels?



How much space should be between two solar panels? It is best to leave four to seven inches of space between two solar panels. Again, this accommodates the solar panels' expansion and contraction during the day. How Much Gap Should Be Between Solar Panel Rows?



Should you put solar panels on your roof? Usually, solar panels have to have space between and around them to accommodate for possible expansion and retraction issues. Still, you should do whatever the manufacturer recommends for that particular brand of solar panels. While placing as many solar panels as possible on your roof might be tempting, this is not really a good idea.



What happens if there is no space between solar panels? If there is no space the panels will press into each other and could cause damage. Your solar panel warranty will be voided if there is no space between the panels, so make sure there is a gap. It is tempting to place the solar panels right next to each other to fit as many as possible, but that is not advisable.



Should solar panels be flush with the roof? The solar panels should never be flush with the roof. This is because, on very hot days, the heat generated can leak through to your attic and cause it to overheat. Therefore, most manufacturers recommend a gap of four inches between the panels and the roof itself. How Much Gap Should Be Between the Solar Panels and the Roof?

SHOULD THERE BE GAPS WHEN INSTALLING PHOTOVOLTAIC PANELS



How many solar panels can be installed on a 30 x 20 ft roof? You can install 8 columns on the roof. 24 solar panels arranged in 3 rows and 8 columns can be installed on a 30 ft x 20 ft roof with 12 inches of space available on either side. As you can see a lot of factors are considered when installing solar panels. The 4 to 7 inch gap is recommended, though you can make it larger.



solar PV panels and their mounting structure. If there is any doubt (and the risk is higher for flat roofs than many other roofs), you should get a structural survey. The installation of solar PV panels on the roof on a house needs to comply with Building Regulations including Part A on Structural Safety. If the loading to the roof is



Still, you should be strategic with placement. There are pros and cons to both vertical and horizontal layouts. Some things you need to consider include: the benefits of horizontal orientation solar panels; how vertical orientation can benefit your solar panels; your roof type for solar panel installation; what angle gets the most sunlight



This article guides you on how to seal between solar panels after installation to help maintain efficiency and effectiveness for a long time. Man installing solar panels connecting two panels Effective Ways of Sealing ???



Advanced considerations in solar panel spacing and adherence to best practices in installation are critical for maximizing the efficiency and lifespan of solar arrays. By taking into account complex environmental ???

SHOULD THERE BE GAPS WHEN INSTALLING PHOTOVOLTAIC PANELS



When designing a PV system that is tilted or ground mounted, determining the appropriate spacing between each row can be troublesome or a downright migraine in the making. Is there a formula to calculate the minimum ground ???



Currently, there are two primary types of flexible solar panels available on the market. The first kind of flexible solar panel is a thin-film solar panel that contains photovoltaic material printed directly onto a flexible surface. The second type of flexible solar panel is made from crystalline silicon cells.



Use our solar panel buying advice and see our solar panel brand reviews to help make your decision. What is the best angle and roof direction for solar panels? The table below shows the percentage of the maximum output you will get from a solar PV system, depending on your roof orientation (west, south, east) and tilt angle (source: the Energy Saving Trust).



In summary, proper planning and consideration of solar panel distance from the inverter and other components, selecting the correct wire gauge and insulation materials, and securing the connections are integral to the installation process. A well-designed solar panel system will result in a more efficient, safe, and long-lasting setup.



There should be at least 4 to 7 inches of space between two rows of solar panels, to allow for proper passage in case of installation and maintenance. There should also be a centimeter-grade distance between two ???

SHOULD THERE BE GAPS WHEN INSTALLING PHOTOVOLTAIC PANELS



Solar panels are generally quite reliable. Many owners don't experience technical faults in over a decade of ownership. Nearly seven in 10 owners had had no problems with their solar panels in our survey of over ???



installation of photovoltaic panels should not be carried out in unfavorable weather conditions, A torque wrench should be used to install the panels to ensure optimal tightening of the screws. Check out the full offer of photovoltaic panels. Installation of photovoltaics depending on the location and type of coverage



??? Solar panel installation is much easier if you have a useable loft space. as there's rarely much point putting just two or three panels up there. The average solar panel takes up 2m², and your installer should leave around 40cm on each side of the array, as well as 3cm between every panel.



How to install solar panels wiring . Solar panel wiring installation is not overly complicated if you understand basic electricity procedures. First, there is a positive wire and a grounding wire. Most solar components have a port for a positive wire and a grounding wire. Next, you would use a ferrule to attach the wires to the components



Conclusion. Proper placement of your solar inverter plays a vital role in the overall performance and longevity of your solar panel system. By choosing the right location and taking steps to protect your inverter from harsh ???

SHOULD THERE BE GAPS WHEN INSTALLING PHOTOVOLTAIC PANELS



"Some panels will be mounted on the roof, where the tiles are still in situ and there is a two to three inch gap between the tiles and the panels. Get inspired with our guide to great projects with different solar panels ideas which seamlessly integrate solar panel installation with their home design.



Introduction This short article is not meant to be a complete guide to the building regulations in relation to installing photovoltaics. Our intention in writing this article is to provide a focus on solar photovoltaics, an area where specific guidance is hard to find and highlight potential discussion points between the client and the installer in order to ensure that PV installations are



Relevant Laws and Regulations for Solar Panel Boundary Distances. When installing solar panel systems, it is crucial not only to consider the spacing between panels and installation angles but also to comply with local government and regulatory requirements concerning the distance between solar panels and property boundaries. 1. Italy



Yes, there should be gaps between solar panels for several reasons. Gaps allow for proper airflow, reducing the risk of overheating and improving the overall performance of the solar array. Additionally, gaps minimize shading effects ???



What is Solar Panel Mounting and Racking? See also: Solar Panel Carport (Costs + Installation) Step 2: Installing Racking Rails. Just as we do on a rooftop install, setting up racking rails correctly on the ground is a crucial step in mounting solar panels. When it comes to longevity and safety, there is no overstating the importance of

SHOULD THERE BE GAPS WHEN INSTALLING PHOTOVOLTAIC PANELS



Careful consideration should be given to the below-listed factors for efficient row spacing, Tilt angle and location of the mounted panel; Mount height and width of the solar panel; Azimuth angle and direction of the panel.



Can I build my own Solar Panel System UK? - DIY Solar; Getting Solar Panel Quotes in the UK 2024; How much Space do I need for Solar Panels? UK Guide 2024; The Smart Export Guarantee (SEG) UK; Solar Panels for New Builds: A UK Guide for 2024; Solar Panels for Schools and Colleges in the UK; How Much Electricity Does a Solar Panel Produce, UK?



RC62: Recommendations for fire safety with PV panel installations 2
About Solar Energy UK (SEUK) Safety is the number one priority of the UK solar industry. Solar Energy UK members are committed to driving the highest possible standards across the sector, and this updated edition of RC62 will help to ensure that. The solar industry



Here's how a solar panel installation works from start to finish, and what you should do before and after the installation. are usually too brittle to rest on a roof hook, in which case an installer will take out the relevant tiles, ???

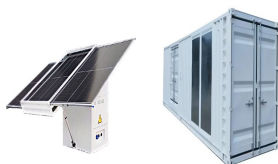


After installation, there should be a certificate to confirm compliance with guidelines. Note should also be taken of the risks with the manual handling and work at height issues associated with installing and maintaining solar panels. There have been numerous incidents of workers falling through, or from, roofs during such work.

SHOULD THERE BE GAPS WHEN INSTALLING PHOTOVOLTAIC PANELS



There are different types of mounting systems for different types of metal roofs, such as: They have ridges and valleys that create air gaps between the roof and the panels. To install solar panels on a corrugated metal roof, you need a mini rail system that is drilled onto the ridges of the roof via self-tapping screws. Fill out the



Solar Panels Installation Guide: To help you understand a retrofit installation of solar photovoltaic panels we have broken it down into its individual stages. If you would like more information about solar panel installations or would prefer to speak to someone you can contact us ???



Space Between Solar Panel Rails and Support: There should be 12 to 16 inches of space between the solar panel track between the first support and the end of the track. Too much space between the rails and the panels can bounce back, dangerous during heavy rain or strong winds. Both track pieces must also have a track joint for stability and



General good roofing practice should always be followed when installing renewable energy systems on roofs. The PV, solar thermal or microwind turbine system should be fully defined at the design stage, including coordination of the assembly sequence of all system components. The



Bifacial solar panels represent a significant advancement in photovoltaic technology, offering the potential to capture sunlight from both their front and rear surfaces. This innovative design can increase energy yield by 5-30% compared to traditional monofacial panels, making them an attractive option for many solar installations. However, to maximize their ???

SHOULD THERE BE GAPS WHEN INSTALLING PHOTOVOLTAIC PANELS



Aluminium does have a good expansion rate but you do need pretty high temperature differences. If you do see the sort of differences the page below mentions, a gap could be worthwhile. The panels would bow a little without any expansion room but enough to cause them damage? Probably not. Most installations I see have atleast a 1cm gap.



Solar panel building regulations. Solar panel installations have to pass standard building regulations for the property - it's a legal requirement for many home improvements.. The key areas are structural safety of a building (Part A) and electrical safety of a building (Part P). Your roof must be able to support the additional weight of rooftop panels and the electricals of the ???



You should know that there are limitations for series solar panel wiring. In the U.S., solar strings are required to feature a maximum voltage of 600V, so solar arrays comply with article 690 section 7 of the National Electrical Code (NEC 690.7).



Choosing Materials For Solar Panel Mounting. There are various mounting materials you might use, depending on where you mount your solar panel array. gap between two adjacent solar panels. The distance between the frame of a singular solar panel and the installation plane should be a minimum of 40mm (1.5 in).



Use the solar panel calculator. There are also a few things to consider: Do I have enough space? The average solar panel system is around 3.5 kilowatt peak (kWp). The kWp is the maximum amount of power the system can generate in ideal conditions. If you're planning to install a solar panel system in your home, you must register it with