

# SOLAR INSTALLMENTS SOUTH SUDAN



AH 12V Deep Cycle Gel Battery Type: Gel Sealed Deep Cycle Battery  
Capacity: 100AH, @10hr-rate to 1.80V per cell @ 25??? Normal Voltage:  
12 Volts Maintenance type: Free Weight: 29.5kg Float voltage:  
13.5v-13.8v Maximum discharge current: 1000A(5 sec) Internal  
Resistance: Approx. 5 m?(C) Recommended Maximum Charging Current  
Limit: 30A Operating ???



Watt 24V Monocrystalline Solar Panel Mono Power: 325W watts, 24Volts  
Model: M325W Cell Type: Monocrystalline Dimensions: 1956x992x40mm  
Current at Max Power IMP: 11.25A Short-Circuit Current(ISC): 9.36A Max.



AH 12V Deep Cycle Gel Battery Type: Gel Sealed Deep Cycle Battery  
Capacity: 100AH, @10hr-rate to 1.80V per cell @ 25??? Normal Voltage:  
12 Volts Maintenance type: Free Weight: 29.5kg Float voltage:  
13.5v-13.8v Maximum ???



EcoFlow RIVER 2 UK Portable Power Station 300W Capacity: 256Wh Net  
Weight: Approximately 3.5kg Dimensions: 245 x 214 x 142 mm AC Input:  
220-240V 50Hz/60Hz, 360W Max Solar Input: 11-30V, 8A, 110W Max Car  
Input: 12V/24V, 8A, 100W Max USB-C Input/Output: 5/9/12/15/20V, 3A,  
60W Max DC Output: 12.6V, 8A, 100W Max USB-A Output: 5V / 2.4A /  
12W Max AC ???



Watt 24V Monocrystalline Solar Panel M260WMono Power: 260W watts,  
24Volts Model: M260W Cell Type: Monocrystalline Dimensions:  
1640x992x35mm Current at Max Power IMP: 8.5A Short-Circuit  
Current(ISC): 8.83A Max. Kweli.shop delivers products to customers  
across Uganda, South Sudan, DRC, Kenya and Tanzania. A leading  
online shopping

# SOLAR INSTALLMENTS SOUTH SUDAN



Luminous Eco Volt Neo 700VA 12V Pure Sine Wave Inverter Suitable for most home appliances; fridges, TVs, computers, woofers, phone and laptop charging, etc. Fast Charging: Full charging current even at low input voltage which reduces battery charging time. Ideal for areas with low voltage issues or frequent power cuts. ECO mode and UPS Mode: UPS mode keeps a stable ???



Watt 24V Monocrystalline Solar Panel Mono Power: 325W watts, 24Volts Model: M325W Cell Type: Monocrystalline Dimensions: 1956x992x40mm Current at Max Power IMP: 11.25A Short-Circuit Current(ISC): 9.36A Max. Kweli.shop delivers products to customers across Uganda, South Sudan, DRC, Kenya and Tanzania. A leading online shopping



Jinko Solar 545-Watt 24V Monocrystalline Solar Panel JKM545M-72HL4 Maximum Power (Pmax): 545 Watts Maximum Power Voltage (Vmp): 40.80 V Maximum Power Current (Imp): 13.36 A Open Circuit Voltage (Voc): 49.52 V Short Circuit Current (Isc): 13.94 A Module Efficiency STC (%): 21.13% Technology: Monocrystalline Operating Temperature: -40??? to +85??? ???



EcoFlow RIVER 2 PRO UK Portable Power Station 800W Battery Capacity: 768Wh Net Weight: Approximately 7.8kg Dimensions: 270 x 260 x 226mm AC Input: 220-240V~ 50Hz/60Hz, 940W Max Solar Input: 11-50V 13A, 220W Max USB-C Input/Output: 5/9/12/15/20V 5A, 100W Max DC Output: 12.6V, 10A/3A/3A, 126W Max USB-A Output: 5V, 2.4A, 12W Max ???



Kweli 2.2kWpv-10kWh-3kVA24 Hybrid Solar System The Kweli 2.2kWpv-10kWh-3kVA24 Hybrid Solar System & Power Backup Solution with WiFi Remote Monitoring is a comprehensive energy solution designed to power all your home or office appliances. Equipped with a 2.2kW solar panel setup, a 10kWh battery capacity, and a 3kVA hybrid inverter, this system ensures reliable, eco ???

# SOLAR INSTALLMENTS SOUTH SUDAN



AH 12V Deep Cycle Gel Battery Battery Type: Gel Sealed Deep Cycle  
Battery Capacity: 200AH @10hr-rate to 1.80V per cell@25??? Normal  
Voltage: 12 Volts Maintenance type: Free Weight: 29.5kg Float voltage:  
13.5v-13.8v Maximum discharge current: 2000A(5 sec) Internal  
Resistance: Approx.4 m Recommended Maximum Charging Current Limit:  
60A ???



Watt 12V Monocrystalline Solar Panel M160W Mono Power: 160W watts,  
12Volts Model: M160W Cell Type: Monocrystalline Dimensions:  
1480x680x30mm Current at Max Power IMP: 8.33A Short-Circuit  
Current(ISC): 8.83A Max. Kweli.shop delivers products to customers  
across Uganda, South Sudan, DRC, Kenya and Tanzania. A leading  
online



Felicity 30A MPPT Solar Charge Controller SCCM3024-II Compatible for  
PV systems in 12V, 24V Maximum charging current up to 30A Automatic  
battery voltage detection (lithium battery voltage needs to be set manually)  
Supports ???



Felicity 5kVA/4kW 48V Hybrid Inverter IVEM-5048 Model: IVEM-3024  
5kVA Max. Load: 4000 watts Pure sine wave inverter Built-in MPPT solar  
charge controller 120A Selectable charging current based on applications  
Configurable AC/Solar input priority via LCD setting Compatible with  
mains voltage or generator power Overload and short-circuit protection  
Smart battery ???

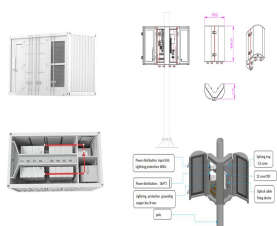


Aptech Africa technicians after installing a solar energy system for a client  
in South Sudan. Aptech in South Sudan in 2011 with \$5,000 of their  
savings and \$15,000 from family in the diaspora

# SOLAR INSTALLMENTS SOUTH SUDAN



TBB RiiO Sun II 3kVA/3kW 48V All-in-One Solar Inverter General Specifications: Nominal Battery Voltage: 48V Continuous Output Power: 3,000 VA (3kVA) Maximum Output Power: 3,000 W Peak Power: 6,000 W Surge Capacity: 9,000 W (300%) AC Output Voltage: 220/230/240V ? 2% AC Output Frequency: 50/60 Hz ? 0.1% Harmonic Distortion: <2% Load Power Factor: 1.0 MPPT ???



Wp-5kWh-2kVA LiFePo4 (Lithium) Hybrid Solar System The Kweli 900Wp hybrid solar system features a 5kWh LiFePo4 (Lithium) battery and a 2kVA inverter, delivering reliable solar energy and backup power for your home or office. This complete system provides an efficient energy supply, minimising reliance on the grid while effectively powering essential devices and ???



W1.8kWh (DC) Solar Lighting System for home The Kweli 400W1.8kWh Solar Lighting System for a home includes solar panels that can generate up to 400 watts of power per hour and keep up to 20 DC bulbs running through the night, with an additional day of autonomy Included in this package 400w Monocrystalline Solar Panel Array 1.8kWh Gel Battery with extended ???



Felicity 30A MPPT Solar Charge Controller SCCM3024-II Compatible for PV systems in 12V, 24V Maximum charging current up to 30A Automatic battery voltage detection (lithium battery voltage needs to be set manually) Supports lithium battery and various lead-acid batteries, AGM and gel battery Integrated intelligent slot compatible with MODBUS communication Caution, risk of ???



Watt 24V Monocrystalline Solar Panel M260WMono Power: 260W watts, 24Volts Model: M260W Cell Type: Monocrystalline Dimensions: 1640x992x35mm Current at Max Power IMP: 8.5A Short-Circuit Current(ISC): ???

# SOLAR INSTALLMENTS SOUTH SUDAN



Watts 12V Monocrystalline Solar Panel Mono Power: 190 watts 12 Volts  
Model: Cell Type: Monocrystalline Dimensions: Current at Max Power  
IMP: Short-Circuit Current(ISC): Voltage Open Circuit-Voc (V): Voltage  
Mpp-Vmppp(V): Module Efficiency (%): 21.3% Kweli.shop delivers  
products to customers across Uganda, South Sudan, DRC, Kenya



Samsung 75" Crystal UHD 4K Smart TV UA75DU8000UXKE (2024) Key  
Features: Dynamic Crystal Colour: Provides lifelike visuals with over a  
billion shades of colour, delivering vibrant and accurate images for  
immersive viewing. 4K Upscaling with Crystal Processor 4K: Enhances  
lower-resolution content to near-4K quality, improving clarity and reducing  
noise, with optimised ???



Felicity 45A MPPT Solar Charge Controller SCCM4524-II Compatible for  
PV systems in 12V, 24V Maximum charging current up to 45A Automatic  
battery voltage detection (lithium battery voltage needs to be set manually)  
Supports ???



watts 24V Monocrystalline Solar Panel Mono Power: 550watts, 24Volts  
Model: SLB144M9-550 Cell Type: Monocrystalline Dimensions:  
2279\*1134\*35mm Current at Max Power IMP: 13.06A Short-Circuit  
Current(ISC): 13.9A Voltage Open Circuit-Voc (V): 50.28V Voltage  
Mpp-Vmppp(V): 42.11V Module Efficiency (%): 21.3% Kweli.shop delivers



Kweli.shop delivers products to customers across Uganda, South Sudan,  
DRC, Kenya and Tanzania. A leading online shopping platform in Uganda,  
Kweli.shop offers customers the option to pay for their favourite  
appliances, electronics or ???

# SOLAR INSTALLMENTS SOUTH SUDAN



VA 24V Hybrid Inverter Wattage: 3,500 watts (3.5kVA) DC Voltage: 48V User-friendly Wide LCD display for battery user interface. Smart Load sharing compatibility. Monitoring/data logging feature for better system information at the user end (optional) Selectable charging current with high charging (HI) and Normal Charging (Low). PV availability, battery charging from solar ???



A 48V MPPT Solar Charge Controller SCCM12048-II System voltage: 12V/24V/48V(Auto detection) Intelligent Maximum Power Point Tracking technology increases efficiency 25%~30% Automatic battery voltage detection (12V/24V/48V) Three-stage charging optimises battery performance Charging Stages: bulk, absorption, float Bulk, absorption, float ???



VA 24V Hybrid Solar Inverter NXG 1500VA Model: NXG 1500VA Voltage: 24V Max. Load: 1,200 watts Pure sine wave inverter Built-in MPPT solar charge controller Supports up to 1500 watts of solar panels Wide operating panel voltage range Protection: Short Circuit, Overload, High Temperature, Low Battery Mode Selections: Solar / Solar + Grid / Grid + Solar ???



W-2.5kWh-700VA12V OffGrid Solar System This offgrid Solar system is suitable for essential home entertainment, lighting a home using up to 15 3-5-watt bulbs. The pure sine wave inverter system can charge the battery with either solar panels or the grid (Umeme) if available and function as a backup system when there are power outages. System capabilities Lighting ???