

SOLAR MICRO GRIDS SOUTH GEORGIA AND SOUTH SANDWICH ISLANDS



What is a solar microgrid? Solar Microgrids are integrated networks or ???grids??? of power. Think of it in the same way that you and your neighbours receive your electricity ??? through a shared network. Using energy generated from the sun,the system captures,stores,and distributes clean electricity to an entire community.



Can microgrids re-energize the Galapagos Islands? Having microgrids with black-start capabilities enables re-energizing larger grids that may be separated by water bodies. In the Galapagos Islands, microgrids are serving as a new opportunity to improve electricity services and reduce reliance on diesel, which is of high concern from a biodiversity and land conservation perspective.



How much energy can a solar microgrid provide? Some of our solar microgrid systems have a capacity as small as 1.5kw,providing reliable energy to 25 homes and 5 businesses. Other microgrids are expected to have a capacity closer to 15kw,enough energy to power hundreds of households and small businesses.



What are Island-based microgrids? Island-based microgrids are opportunities to increase access to electricity for areas with underserved electricity needs. The systems are also ways to provide baseload and reliable electricity for regions that have consistently lacked reliable electricity.



What is a solar mini grid? Modern solar mini grids now provide enough electricity for life-changing electric appliances,such as refrigerators,welders,milling machines or e-vehicles. Mini grid operators can manage their systems remotely,and paidsmart meters enable customers to pay as they use the electricity.

SOLAR MICRO GRIDS SOUTH GEORGIA AND SOUTH SANDWICH ISLANDS



Where are microgrids found? Microgrids are more likely found on physical terrestrial island nations because typically islands in the tropics have relied on diesel as a fuel source for power. On islands, microgrids have become testbeds to integrate higher shares of variable renewable energy options, such as solar photovoltaic electricity or wind power.



South Georgia and the South Sandwich Islands are a United Kingdom Overseas Territory located in the South Atlantic Ocean. Geography . The SGSSI are a group of sub-Antarctic islands, located in the South Atlantic Ocean. This region is located to the east of the southern tip of South America and north of Antarctica. The islands include the Shags



Together, South Georgia and the South Sandwich Islands form part of the Scotia Arc, which extends from the tip of South America to Antarctica (and also includes the South Shetland and South Orkney Islands, though these are not part of the British dependency). The island of South Georgia is 105 mi (170 km) long, and about 25 mi (40 km) wide.



Grytviken - One of several former whaling stations in South Georgia. Understand . South Georgia and the South Sandwich Islands are rugged islands, rising out of the Southern Ocean. There are no indigenous residents, ???



South Georgia is inhabited by less than 50 people and leaving no trace is a guiding principle. Most expeditions will not visit the sandwich islands group due to their remoteness. The Sandwich Islands are uninhabited and ???

SOLAR MICRO GRIDS SOUTH GEORGIA AND SOUTH SANDWICH ISLANDS



1. South Georgia is not part of Antarctica. South Georgia and the South Sandwich Islands are a chain of sub-Antarctic islands in the Southern Ocean. They are located more than 2,000km from the continent of Antarctica but the reason many people associate the two is that many cruises to Antarctica also stop by South Georgia.. 2.



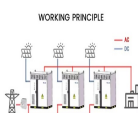
S?d Georgien und die S?dlichen Sandwichinseln (von der Inselregierung verwendete Abk?rzung SGSSI [1]) sind ein britisches ?berseegebiet im S?datlantik, das aus S?d Georgien und den S?dlichen Sandwichinseln besteht. Die Inseln sind 3677 km vom S?dpol entfernt. Da sie n?rdlich des 60. Breitengrades s?dlicher Breite liegen, fallen sie nicht in den Anwendungsbereich des ???



Modern solar mini grids now provide enough electricity for life-changing electric appliances, such as refrigerators, welders, milling machines or e-vehicles. Mini grid operators can manage their systems remotely, and ???

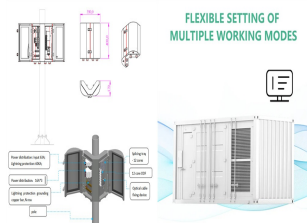


The government of South Georgia and South Sandwich Islands took further steps in 2018 after an environmental review to fully protected 23% of its waters. However, the rest of the area remained open to industrial fishing, which would disrupt food availability and the interconnected food web. Additionally, since the 2018 review, the impacts of



The Office of the Commissioner of South Georgia and the South Sandwich Islands based in Stanley, Falkland Islands deals with all requests for consular assistance. Documents Our announcements

SOLAR MICRO GRIDS SOUTH GEORGIA AND SOUTH SANDWICH ISLANDS



The island of South Georgia is unusual among oceanic islands for having pre-Cretaceous sedimentary rocks underlying much of the island and a significant portion of felsic igneous rocks. Two-thirds of the island consists of intensely folded flysch, capped with Aptian age fossils, tuff and greywacke in the Cumberland Bay Series.



? 1/4 ?? 1/4 ?South Georgia and The South Sandwich Islands,? 1/4 ?SGSSI? 1/4 ?,,,???56?18???-59?30???????26?-28?30???,??? ???



Leading islands and remote communities, from the deserts of Australia to the isles of the United Kingdom, have already transitioned from 100% oil-based electricity systems to ones with significant renewable penetration.

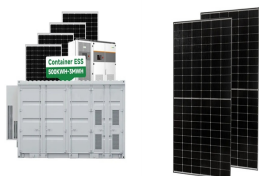


About the Islands. South Georgia and the South Sandwich Islands is a remote inhospitable overseas territory of the British Government. The largest amongst smaller Islands that make up South Sandwich Islands. It is regarded as a sovereign state and separate from the Falkland Islands.



South Georgia South Georgia and its associated smaller offshore islands, islets and stacks lie between the parallels of 53°00'S and 55°00"S, and between the meridians of 34°30"W and 42°00"W. These islands are very isolated, lying about 870 miles (1,400 km) east-south-east of the Falkland Islands, 963 miles (1,550 km) north-east of

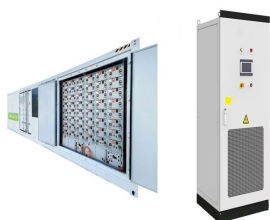
SOLAR MICRO GRIDS SOUTH GEORGIA AND SOUTH SANDWICH ISLANDS



13 ? Only 29% of Madagascar's population and 39% of Mali's have access to electricity. South Sudan, at 8%, holds the dubious distinction of being the least electrified country in the ???



Closeup map of the South Sandwich Islands NASA satellite photograph of Montagu Island. The South Sandwich Islands comprise 11 mostly volcanic islands (excluding tiny satellite islands and offshore rocks), with some active volcanoes. They form an island arc running north???south in the region 56?18"???59?27"S, 26?23"???28?08"W, between about 350 and 500 mi (300 and 430 nmi; ???



The strategy has also been developed in conjunction with the Government of South Georgia and the South Sandwich Islands, who will also publish, on their website, their own complementary 5-year



1 ? Off-grid solar and mini-grids offer one of the most cost-effective means of delivering electricity access, particularly in Sub-Saharan Africa. Image: Renewable Energy Association of ???



South Georgia and the South Sandwich Islands Cruises to Antarctica, Polar Travel With Cool Antarctica and Antarctica Travels Notes * Prices are per person. the lowest price is usually for triple occupancy in a basic cabin, the highest for double occupancy in the best available suite. Options such as kayaking are usually booked when the cruise is booked, they may be at ???

SOLAR MICRO GRIDS SOUTH GEORGIA AND SOUTH SANDWICH ISLANDS



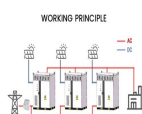
South Sandwich Islands, group of actively volcanic islets in the South Atlantic Ocean, north of the Weddell Sea and 470 miles (760 km) southeast of the island of South Georgia. They extend for 190 miles (305 km), occupy 120 square miles (310 square km), and are covered with glaciers. Until 1985 they were included within the Falkland Islands (Islands ???)



Immerse yourself in the largest king penguin colonies on the planet, home to an almost uncountable number of birds.; Wade ashore on South Georgia's beaches to watch battling bull elephant seals or playful fur seal pups gambolling in the surf.; Retrace the final leg of Shackleton's epic hike across the island to the old whaling station at Stromness.; Gaze in awe at some of ???



Indeed, solar microgrids are playing an important role in ensuring that communities living in remote areas away from main power have access to electricity in East Africa in a region where nearly 80 percent of the ???



Winter, from June to August, brings extreme conditions to the South Georgia and the South Sandwich Islands. With average temperatures oscillating between -2°C (28.4°F) and 2°C (35.6°F), the islands experience intense cold, frequent snowstorms, and strong winds, with speeds reaching up to 40km/h (24.9mph).



South Georgia and the South Sandwich Islands. Published: September 2018. Citation: UNEP-WCMC. 2018, A review of terrestrial protected areas: South Georgia and the South Sandwich Islands. Cambridge, UK. The UN Environment World Conservation Monitoring Centre (UNEP-WCMC) is the specialist biodiversity assessment centre of

SOLAR MICRO GRIDS SOUTH GEORGIA AND SOUTH SANDWICH ISLANDS



South Georgia and the South Sandwich Islands are a chain of Subantarctic islands in the Southern Ocean surrounding Antarctica. The islands are an overseas territory of the United Kingdom: they have no permanent residents ???



The South Georgia and South Sandwich Islands Marine Protected Area (SGSSI-MPA) is one of the world's largest MPAs, covering an area of 1.24 million km² (an area 5 x larger than the UK). It was established in 2012 with the aim of conserving the rich marine biodiversity within the Territory's maritime zone and provides a framework for our marine environmental management ???



Solar-powered microgrids improve access to healthcare, education, and economic opportunities. These grids provide clean energy, reducing the need for fossil fuels and cutting carbon emissions. For quite some ???



South Georgia & the South Sandwich Islands is a British Overseas Territory in the southern Atlantic Ocean. Stunningly beautiful and rugged, this island wildlife sanctuary, once visited, is not easily forgotten. Its snow covered peaks, blue glacier ice and emerald green bays are breathtaking sights.



1 South Georgia Island is the only inhabited island, with the summer-only settlement of Grytvikken, and the only one regularly visited by cruise ships. Minor islands are ranged along its north coast ??? those visited by cruises are Willis, Bird, Albatross and Prion, and Cooper. The south coast is exposed to raging winds and waves and is seldom visited ??? Annenkov is the only large island ???