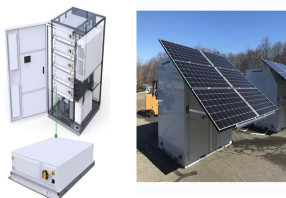


# SOLAR PHOTOVOLTAIC PANEL SPECIFICATIONS AND WEIGHT



Weight Per Unit (lbs.) 26.0 Part # UD-242 324" Standard Lengths Length 324" Weight Per Unit (lbs.) 34.8 Part # UD-324 LD POWER RAIL LD and MD ??? Extrusions MD 242" Standard Lengths Length 242" Weight Per Unit (lbs.) 34.2 Part # LD-242 324" Standard Lengths Length 324" Weight Per Unit (lbs.) 46.1 Part # LD-324 242" Standard Lengths Length 242



The specifications outlined in a solar panel's datasheet provide insights into its expected performance under specific conditions. When shopping for solar panels, it can be hard to identify the most crucial metrics to pick the best solar panel.. We recommend focusing on key specifications such as power output, efficiency, and the temperature coefficient of the panel.



450W A Grade Mono 9BB Solar Panel. 550W A Grade Mono 11BB Solar Panel. Cell size: 166 x 83mm; Cell type: A-grade monocrystalline solar cell; Number of cells: 144(6 x 24) Weight: 23.5kg; Dimensions: 2094 x 1038 x 35mm; Max load: 5400 Pascal; Junction box: IP68 rated; Connector: MC4; Cables: Photovoltaic technology cable 4.0 m m2, 900mm; Cell



What size solar panels do you need for your solar PV system? The number and size of your solar panels depend on the size of your property and energy demands. A 4kW solar system is one of the most popular sizes for domestic solar systems, as it is typically appropriate for homes with 3 to 4 people.



The size and weight of solar panels vary depending on the make and model, with most residential panels measuring about 5.5 feet by 3 feet and weighing between 40 and 50 pounds. The exact size of residential and ???

# SOLAR PHOTOVOLTAIC PANEL SPECIFICATIONS AND WEIGHT



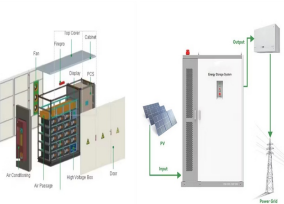
Builders that intend to meet both the solar PV and solar water heating RERH specifications should detail the location and the square footage of the roof area to accommodate both technologies. Although the RERH specification does not set a minimum array area requirement, builders should



Static snow load in the solar panel specifications. This refers to the amount of pressure that can be exerted on the solar panels from the weight of static snow without voiding the warranty of the solar panel specifications. Most solar panels are rated to hold a pressure from a snow load of 5400pascals (Pa), which are units of pressure.



Solar panel dimensions and weight. 60-cell panels are generally around 65 inches x 39 inches. In comparison, 72-cell panels are a bit larger, at about 80 inches by 40 inches. A solar photovoltaic system can add over 700 pounds to your roof! ???

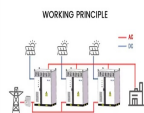


Understanding solar panel specifications from datasheets is crucial for making informed decisions when investing in solar panels, helping evaluate options based on energy needs, efficiency, and budget. The weight of a solar panel may seem inconsequential initially, Photovoltaic Cell Type. Solar panels come in various types, the two main



solar R Clearline n m n x m x = (m x 1164) + 230 y = (n x 1727 ) + 500 30 30 - 60 5 Sleek, low-profile integrated solar that replaces the roof covering for an improved aesthetic and for simple roof maintenance, now at similar cost to above-roof panels. Simple, beautiful, durable. Solar never looked so good. M10 Solar Photovoltaic Panels Pitched

# SOLAR PHOTOVOLTAIC PANEL SPECIFICATIONS AND WEIGHT



Specifications of the solar panel include details on the efficiency, wattage, temperature coefficients, and warranty. Weight: 22 lbs (10Kg) Number of Cells: 64: Junction Box: IP65: Cell Type: Monocrystalline: Large-Area PV Solar Modules with 12.6% Efficiency with Nickel Oxide by Italian Scientists. September 25, 2024



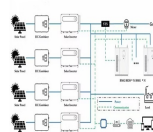
72-cell solar panel size. The dimensions of 72-cell solar panels are as follows: 77 inches long, and 39 inches wide. That's a 77x39 solar panel; basically, a longer panel, mostly used for commercial solar systems.  
96-cell solar panel size. The dimensions of 96-cell solar panels are as follows: 41.5 inches long, and 63 inches wide.



The most important solar panel specifications include the short-circuit current, the open-circuit voltage, the output voltage, current, and rated power at 1,000 W/m<sup>2</sup> solar radiation, all measured under STC.. Solar modules must also meet certain mechanical specifications to withstand wind, rain, and other weather conditions. An example of a solar module datasheet composed of ???



Solar panels, or photovoltaics (PV), capture the sun's energy and convert it into electricity to use in your home. Installing solar panels lets you use free, renewable, clean electricity to power your appliances. You can sell extra ???



Three Common Types of Solar Panels: Size and Weight. Understanding common solar panel sizes is key. The 60-cell and 72-cell panels are standard for residential and commercial installations due to their practicality. 96-cell panels, though offering more power, can be challenging to fit on roofs as they measure approximately 17.5 square feet.

# SOLAR PHOTOVOLTAIC PANEL SPECIFICATIONS AND WEIGHT



Understanding Solar Panel Basics Solar Panel Components. To understand solar panel specifications, it's crucial to grasp the components that make up a solar panel. Solar Cells: Solar cells are the heart of a solar panel. They are made of semiconductor materials, usually silicon, that convert sunlight into electricity through the photovoltaic effect.



Solar power is already the cheapest source of electricity in many parts of the world today, according to the latest IRENA report. Electricity costs from solar PV systems fell 85% between 2010 and 2020 [20]. Based on a comprehensive analysis of these projects around the world, due to the fact that the cost of photovoltaic power plants (PVPPs) will decrease, their ???



Solar panel size refers to the total amount of power a solar panel can generate over a period of time; Solar panel dimensions refers to the physical size of a solar panel; Solar panel sizes and wattage range from 250W ???



Let's shed some light on solar panel specs! Buyer's Guides. Buyer's Guides. What Is the 30% Solar Tax Credit and How Do I Apply? Solar panel connectors establish a reliable and secure connection between solar ???



Transparent Solar PV Glass. PS-CT-series. Transparent see-through Cadmium Telluride (CdTe) thin-film Photovoltaic technology. Polysolar Mono PERC modules offer high efficiencies up to 22.1% combined with ultra light weight ???

# SOLAR PHOTOVOLTAIC PANEL SPECIFICATIONS AND WEIGHT



What Are the Standard Solar Panel Sizes? When it comes to standard solar panel sizes, like 300w or 500w, it is essential to determine the size of a solar panel system based on these standard sizes. The dimensions of a ???



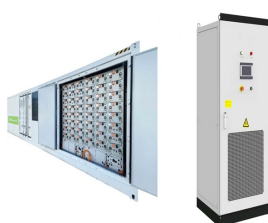
Weight of Solar Panels. Here are some quick facts about the average weight of solar panels with differing wattages: 100-watt solar panels from 5 of the most popular brands average 18.8 pounds. 200-watt solar panels from 5 of the most popular brands average 23.28 pounds. Most 60-cell solar panels weigh about 44.9 pounds. Remember, these solar



Check out this full guide on solar panels size, weight, and other characteristics, including a comparison between Residential and Commercial panels. A single residential solar panel typically has 60 PV solar cells and measures 5.4 feet by 3.25 feet (65 inches long by 39 inches wide). The panels are between 1.5 to 2 inches deep.



Understanding the dimensions and weight of solar panels in Australia is essential when installing a new system. then you might have noticed that manufacturers place physical dimensions and weight ???



Photovoltaic (PV) glass is revolutionizing the solar panel industry by offering multifunctional properties that surpass conventional glass. This innovative material not only generates power but also provides crucial benefits like low-emissivity, UV and IR filtering, and natural light promotion. The most important aspect of PV glass for solar panels is its ability to ???