

SOLAR PHOTOVOLTAIC PANELS ARE PLACED ON THE ROOF



The ideal place to put a photovoltaic system is on the rooftop, as it's generally the spot most exposed to the sun and would otherwise be unused space. Installing solar panels on an asbestos roof is a lot trickier than any other type ??? many installers won't want to touch those projects with a bargepole ??? but it's not impossible



In Ireland, you've probably seen a house or two that run on PV solar panels. That's because the roof is the best place to install your solar panels. The electricity generation varies based on the orientation of your roof and the consequent solar panel inclination. PV solar panels can be integrated into most Irish roofs, from pitched to flat.



Well, the answer is simple. The labour costs for flat roof solar panel installations is lower than a pitched roof. Approximately 10% of the cost of installing solar panel systems is attributed to the cost of labour and safety equipment. Solar panel installers have much more freedom to move on a flat surface.



Not only can you put solar panels on a flat roof, they're actually easier to install than on a sloped roof. On average, a 3-bedroom household will take around 12.7 years to break-even on flat roof solar panels. Flat roof solar panel savings based on property size. Property size System size Estimated cost of solar panels (including



You can put solar panels on any roof; be it 300 sq ft, 500 sq ft, 1000 sq ft, 2000 sq ft roof, and so on. Solar System Size (800 Sq Ft) = 800 Sq Ft x 0.75 x 17.25 Watts / Sq Ft = 10,350 Watt = 10.35kW Solar System. Now, by average solar ???

SOLAR PHOTOVOLTAIC PANELS ARE PLACED ON THE ROOF



In this guide, we'll run through the steps an installer will take to put solar panels on your slate roof, the cost of doing so, and the different solar options to consider before you move ahead. If you want to get solar panels for ???



Throughout this guide, we've explored the intricacies of Securing Solar Panels to Roof, delved into the specifics of Solar Panel Mounting Systems, and provided a comprehensive Roof Solar Installation Guide.



Planning permission for solar panels on a flat roof. Thanks to recent changes to permitted development rules, most installations on flat roofs won't need solar panel planning permission. So long as the panels aren't ???



??? a lightweight solar laminate (amorphous) solar PV system installed on the roof instead, glued or heat sealed in place ??? a ground-mounted system. Ground-mounted Ground-mounted solar PV panels are fixed to an A-frame or other purpose-built framework in much the same way as flat roof-mounted solar PV panels.



An old or weak roof: You don't want to put solar panels on a roof that can't support the extra pressure. If your roof is a bit on the older side or has damage, it might be best to repair your roof

SOLAR PHOTOVOLTAIC PANELS ARE PLACED ON THE ROOF



This blog post presents a comprehensive analysis of solar panel problems. Click to read. So, let's dive in and learn how to navigate the potential pitfalls of installing solar panels on your roof. 1. Roof Damage. One of homeowners' main concerns when considering solar panel installation is the potential for roof damage. While solar



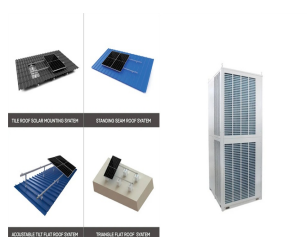
How efficient are integrated solar panels? In-roof solar panels are slightly less efficient than conventional solar panels. The efficiency rating of a typical solar panel is 20%, which means it's capable of converting 20% of the sunshine hitting it into electricity. Integrated solar panels average about 17% efficiency.



Flat roofs have a minimal slope allowance that will accommodate solar PV panel systems. A roof having a rise of 0.25 inches over a 12-inch run ??? known as a 0.25:12 pitch roof ??? is considered a flat roof. These roofs are also commonly known as: Instead of drilling into the roof to attach the solar panels, installers can use ballast



Always check with a qualified solar PV installer that your roof is suitable for solar panels. More roof space required . Solar panel systems on a flat roof take up more space. The solar panels need to be spaced out more, so they don't overshadow each other which means they take up more space compared to a solar panel system on a sloped roof.



When installing Solar panels on a flat roof, this is easily achieved. As the Solar Panels are installed onto a bracket which tilts the panel to around 30 degrees. Flat Roof Solar panels are usually mounted onto a tub, and weighed down by ballast (gravel, paving slabs, bricks, rocks etc) in order to resist high winds.

SOLAR PHOTOVOLTAIC PANELS ARE PLACED ON THE ROOF



Many of the best unique solar panel placement ideas integrate seamlessly into a home's exterior. Ready to dive in? Here are some of our favorite ways to install solar panels besides on the roof. Solar Panels Installed ???



If you have a 1000 sq ft roof, and you can use 75% of that roof area for solar panels, you can theoretically put 123 100-watt solar panels on a 1000 sq ft roof. A typical 300-watt solar panel is 65.8 inches long and 36.1 inches wide .



Attach the Solar Panel Mounts. Once you are safely up on your roof, the first thing you will need to do is secure your solar panel mounts. Mounts are what your panels will attach to and "hang" from, so you must ensure they are completely stable. Also, consider how you're going to maximise sunlight exposure throughout the day.

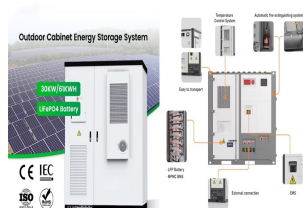


Integrated solar panels, also known as in-roof solar panels, use the same solar PV technology as conventional solar panels. But unlike conventional on-roof panels that are installed on top of the roof tiles, ???



If you'd like to install solar panels on a north-facing roof, you'll need an installer you can trust. It can be a headache finding an installer who is giving you the best value for your money. Luckily, our service can help with that by providing you with up to 4 free, non-binding quotes from certified solar panel installers. Click below to

SOLAR PHOTOVOLTAIC PANELS ARE PLACED ON THE ROOF



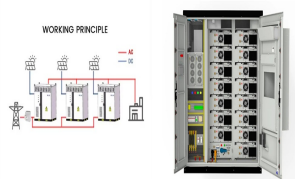
A typical residential solar panel covers about 1.5 square metres, so even a small flat roof can accommodate a few panels. However, the more space you have, the more energy you can produce. Best type of solar panels for flat roofs. For the installation of solar photovoltaic panels on flat roofs, monocrystalline solar panels are often the best



However, solar racking companies and installers have crafted many intelligent and safe ways to make putting solar panels on a tiled or shingled roof easy. Can you install solar panels on asphalt shingle roofs? Asphalt is ???



We mainly use GSE integration and Solar Century kits. An in-roof solar panel system sits on top of the roofs battens and is then tiled or slated around. It is possible to create a whole roof out of solar panels using an in-roof system. Making the whole roof out of solar panels can be a fantastic option as installing solar panels is an asset to



Effortlessly install solar panels on a roof with our expert guide, maximising green energy efficiency and sustainability. The type of mounting system will depend on your roof type and the solar panel types chosen. 2: Electrical Connections: Once the panels are in place, the next step is to connect the electrical components. This includes



In this guide, we'll run through the steps an installer will take to put solar panels on your slate roof, the cost of doing so, and the different solar options to consider before you move ahead. If you want to get solar panels for ???

SOLAR PHOTOVOLTAIC PANELS ARE PLACED ON THE ROOF



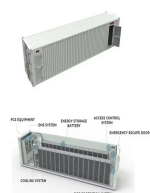
How to Install Solar Panels on Roof. Solar panels, an efficient and versatile energy source, have grown in popularity for a variety of applications, from residential rooftops to large-scale power plants. In most cases, ???



The angle of your solar panels is certainly important, but the most critical factor in terms of maximising energy production from your solar PV system is the direction the panels face. As we've discussed, a south-facing roof will provide the biggest output, but other properties may still generate power.



weight of solar panels on your roof. Solar panels, including all the mounting equipment, weigh about 2- to 4-pounds per square foot. That's the one-square-foot equivalent of putting one of the following up on your roof: pineapple small cat two-liter bottle of soda one-quart carton of soy milk medium pumpkin Pomeranian

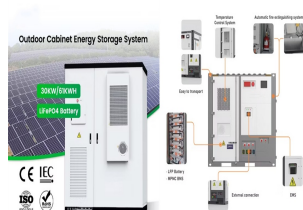


Types of Tiles Suitable for Solar Panel Integration. Choosing the right type of tiles is crucial. The integration of solar panels requires careful consideration of factors such as weight, durability, aesthetics, compatibility with mounting systems, and cost implications. Different Tile Materials Suitable for Solar Panel Integration. Clay Tiles:



By utilizing the open space on your roof, you can take advantage of the sun's energy and convert it into usable electricity. In this section, we will explore the introduction to solar panel roof mounts, highlight the ???

SOLAR PHOTOVOLTAIC PANELS ARE PLACED ON THE ROOF



Flat roof solar panel mounting is usually done with ballasts, which can also incur extra costs during purchase. Ballasts can be around \$60 to \$120 per kilowatt on average but prices can vary based on sizes and whether they offer "universal" mounting or only mount certain panel systems. They can also be quicker to install making them cheaper in terms of the ???



If you're not sure whether your roof is a good candidate for solar panels, you can have a solar site assessment done. This will help you determine the best location for your panels. The building codes for solar panel installation vary from place to place. It's important to check with your local code officials before starting any work.