

SOLAR POWER GENERATION ENGLISH

SYSTEM DIAGRAM



What is a solar energy system diagram? A solar energy system diagram is a graphical representation that illustrates the different components and the flow of energy within a solar power installation. These diagrams provide a visual aid, making it easier to comprehend the complex workings of solar panels, inverters, batteries, and other essential components.



How do you read a solar energy system diagram? The first step in reading a solar energy system diagram is to identify the different components of the system. This may include solar panels, inverters, batteries, charge controllers, meters, and other devices. Each component plays a specific role in the overall functioning of the system. 2. Understand the flow of energy



What are the different types of solar energy system diagrams? One common type of solar energy system diagram is the solar panel wiring diagram. This diagram shows the connections between solar panels, inverters, batteries, and other electrical components. It helps to illustrate how the solar panels are connected together and how the generated electricity is routed through the system.



What is a solar energy block diagram? This technology often involves mirrors or lenses to concentrate sunlight onto a small area, intensifying the heat. A solar energy block diagram illustrates the key components and their interconnections in solar power systems. Here's a simplified explanation of the main components typically found in such a diagram :



Why do we need a visualization diagram of a solar energy system? A visualization diagram of a solar energy system further aids in understanding the overall functionality and connectivity of these components. The benefits of solar energy, such as reduced carbon emissions, cost savings, and energy independence, are discussed along with its diverse applications in residential, commercial, and industrial sectors.

SOLAR POWER GENERATION ENGLISH SYSTEM DIAGRAM



Why is a solar energy system diagram important? The layout and orientation of the solar energy system diagram can provide valuable information about the physical installation of the components. It can show the placement of solar panels, the direction they are facing, and any obstructions that may impact their effectiveness. This information is important for optimizing energy production.

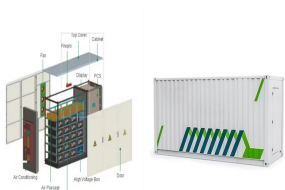


Solar power plants are systems that use solar energy to generate electricity. They can be classified into two main types: photovoltaic (PV) power plants and concentrated solar power (CSP) plants. Photovoltaic power plants convert sunlight directly into electricity using solar cells, while concentrated solar power plants use mirrors or lenses???



And here's an explanation of the components of this solar power diagram:

1. Solar Photovoltaic (PV) Panels. These are the most expensive part of the system and will typically make up 60% of the cost of your system. Solar panels simply absorb sunlight, and spit out electricity. However that electricity is in a form that is not very useful to



The hybrid system consists of a photovoltaic generator (Kaneka GSA060), a wind generator (Air X 600 W), consisting of a turbine and a permanent magnet synchronous generator, a three-phase



The concentrated solar power plant or solar thermal power plant generates heat and electricity by concentrating the sun's energy. That, in turn, builds steam that helps to feed a turbine and generator to produce electricity.

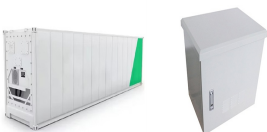
SOLAR POWER GENERATION ENGLISH SYSTEM DIAGRAM



Solar energy systems consist of several components that work together to harness and convert sunlight into usable electricity. The provided diagram offers a clear visual representation of a typical solar energy system. 1. Solar Panels: ??? These photovoltaic (PV) panels, located on the roof or a ground-mounted frame, efficiently capture sunlight.



Solar Panels. The main part of a solar electric system is the solar panel. There are various types of solar panel available in the market. Solar panels are also known as photovoltaic solar panels. Solar panel or solar module is basically an array of series and parallel connected solar cells.. The potential difference developed across a solar cell is about 0.5 volt ???



Discover the power and potential of solar energy in this comprehensive guide. Learn how solar panels convert sunlight into electricity, explore the different types of solar panels, and understand the components of ???



This document summarizes solar power generation from solar energy. It discusses that solar energy comes from the nuclear fusion reaction in the sun. About 51% of the sun's energy reaches Earth's atmosphere. There are two main technologies for solar power generation: solar photovoltaics and solar chimney technologies.



A photovoltaic (PV) system is composed of one or more solar panels combined with an inverter and other electrical and mechanical hardware that use energy from the Sun to generate electricity. PV systems can vary greatly in size from small rooftop or portable systems to massive utility-scale generation plants. Although PV systems can operate by themselves as off-grid PV ???

SOLAR POWER GENERATION ENGLISH SYSTEM DIAGRAM



Stay tuned for the next section where we'll dive into a specific example - a solar panel wiring diagram for a campervan. Solar Panel Wiring Diagram For Campervan. Alright, let's get our hands dirty and dive into the nitty-gritty of putting together a solar panel wiring diagram for a campervan. The Components. First things first, let's talk



Schematic diagrams of Solar Photovoltaic systems. Self-consumption kits with batteries Self-consumption kits Plug & Play Kits 12V kits with batteries Motorhome / boating kits Autonomous lighting kits Anti-cut kit Hybrid inverter and battery packs Solar kits installed in Belgium Solar kits installed in France Solar kits installed in Luxembourg



A solar energy block diagram illustrates the key components and their interconnections in solar power systems. Here's a simplified explanation of the main components typically found in such a diagram :



Solar power plants have been built in China, once thought to be the world's largest polluter. India further aims to generate 100,000 MW of electricity solely from solar power plants by the year 2023. Tesla has taken the decision to build a solar power plant that will be the only ???



As a reference for electrical symbols, refer to the following legend to comprehend the system diagrams better. The following sample Enphase Energy System diagrams help you design your PV and storage systems. Twisted-pair Production CT conductors Twisted-pair Consumption CT conductors N Set of N ungrounded conductors One is implied if not labeled

SOLAR POWER GENERATION ENGLISH SYSTEM DIAGRAM



Google Docs, which includes Google Draw, is the most collaborative web tool I know today. We can all work on one diagram together at the same time while we chat. In the meantime, the tools I use (and I do not ???



We can explore these systems in more categories such as primary transmission and secondary transmission as well as primary distribution and secondary distribution. This is shown in the fig 1 below (one line or single line diagram of ???



With solar panels accounting for 54% of all new electricity generation capacity, you are still not immune to emergencies and power outages unless you rely on an off-grid solar power system. Speaking of which, ???



Overall, a typical solar power system diagram shows how these components are connected and work together to harness the power of the sun and provide clean, renewable energy. This ???



Understanding a solar energy system diagram is crucial for anyone involved in the design, installation, or maintenance of solar power systems. These diagrams provide a visual representation of how the different components of a solar ???

SOLAR POWER GENERATION ENGLISH

SYSTEM DIAGRAM



Volt Solar System Wiring Diagram. A 12 volt solar system wiring diagram is a visual representation of the electrical connections and components in a solar power system that operates at 12 volts. It shows how different components, such as solar panels, batteries, charge controllers, and inverters, are interconnected to form a functioning system.



In summary, the schematic diagram of a solar power system illustrates the flow of energy from the solar panels to the charge controller, batteries, inverter, and optional backup generator. This diagram serves as a visual guide in ???



But other types of solar technology exist???the two most common are solar hot water and concentrated solar power. Solar hot water. Solar hot water systems capture thermal energy from the sun and use it to heat water for your home. These systems consist of several major components: collectors, a storage tank, a heat exchanger, a controller



An on-grid solar system is an electrical generator using solar energy, a non-conventional source of energy. In contrast with off-grid systems, grid-tied systems are connected to the grid. As a consequence, the not used generated power of the system can be sold to the electrical company. In addition, the user can buy energy from the grid if needed.



We start with a diagram of the solar cell and then proceed to diagrams of solar panels and solar arrays. We then provide a schematic of a solar power system that shows how to connect your solar panel, charge controller, and solar ???

SOLAR POWER GENERATION ENGLISH SYSTEM DIAGRAM



V. Maintenance and Troubleshooting Tips for Your Solar System 1.

Regular Inspections Regular inspections of your solar system should be done to identify any potential problems before they become a major issue. Inspect the wiring and connections, check for corrosion or damage on the panels, and make sure that everything is working as it should be.



Key learnings: Solar Cell Definition: A solar cell (also known as a photovoltaic cell) is an electrical device that transforms light energy directly into electrical energy using the photovoltaic effect.; **Working Principle:** The working of solar cells involves light photons creating electron-hole pairs at the p-n junction, generating a voltage capable of driving a current across ???



2 ? The potential for solar energy to be harnessed as solar power is enormous, since about 200,000 times the world's total daily electric-generating capacity is received by Earth every day in the form of solar energy. Unfortunately, though solar energy itself is free, the high cost of its collection, conversion, and storage still limits its exploitation in many places.



This article explores the components of a solar energy system, highlighting the importance of solar panels, inverters, batteries, and charge controllers. A visualization diagram of a solar energy system further aids in ???



A photovoltaic system, also called a PV system or solar power system, is an electric power system designed to supply usable solar power by means of photovoltaics consists of an arrangement of several components, including solar panels to absorb and convert sunlight into electricity, a solar inverter to convert the output from direct to alternating current, as well as ???

SOLAR POWER GENERATION ENGLISH SYSTEM DIAGRAM



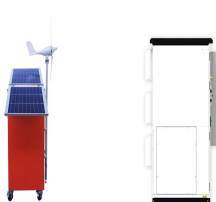
Learn about solar energy system diagrams and how they work. Explore the different components of a solar energy system and understand their role in generating renewable energy. Discover how solar panels, inverters, and batteries work together to convert solar energy into usable electricity for your home or business.



The diagram of a solar power system provides a visual representation of how solar energy is captured, converted, and used to generate electricity. By understanding this diagram, one can gain valuable insights into the various ???



A solar panel wiring diagram (also known as a solar panel schematic) is a technical sketch detailing what equipment you need for a solar system as well as how everything should connect together. There's no such ???



In the simplest terms, a solar wiring diagram with generator is a visual representation of the electrical wiring needed to connect the solar panels and generator to the main power grid. It is similar to any other wiring diagram ???

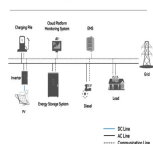


A solar panel system schematic diagram is a visual representation of how the different components of a solar panel system are connected to each other. and can even be taken off-grid for remote power generation. In conclusion, solar ???

SOLAR POWER GENERATION ENGLISH

SYSTEM DIAGRAM

System Topology



When it comes to installing a solar power system, understanding the wiring diagram is crucial. In a 3-phase solar system, the electrical power is distributed evenly across three alternating currents. This allows for efficient power generation and transmission. A solar system wiring diagram provides a visual representation of how the various



Advantages and Disadvantages of Solar Power Plant. Advantages . The advantages of solar power plants are listed below. Solar energy is a clean and renewable source of energy which is an unexhausted source of energy. After installation, the solar power plant produces electrical energy at almost zero cost. The life of a solar plant is very high.