

# SOLAR POWER GENERATION EQUIPMENT IN THE PARK



Noor Energy 1 PSC will be implementing the 4th phase of Mohammed bin Rashid Solar Park, which is a 700MW CSP +250 MW PV Project. The Project will be the largest single-site concentrated solar power plant in the world. It has also witness a new world record of levelised cost of electricity at US \$7.3 cents per kilowatt-hour; a cost level that competes with fossil fuel ???



Ornate Solar successfully completed a 3.25 MW InRoof solar project for Jindal Steel and Power Limited (JSPL) in Odisha. Spanning an impressive 1,97,000 sq. ft. and installed at a height of 65 ft, this massive ???



Another critical initiative underlining India's commitment to solar energy is the Solar Park Scheme, designed to establish 50 Solar Parks of 500 MW and above with a cumulative capacity of ~38 GW by 2025-26. These ???



Those who run a solar power company, fabricating, selling, or fitting solar systems can also insure their business with solar power insurance. If you're a self-employed installer of solar panels, solar panel installer insurance protects you against the risks of the job and the valuable panels as you transport them to a job and install them.



2MW / 5MWh  
Customizable

??? The grid connected solar PV power generation scheme will mainly consist of solar PV array, power conditioning unit (PCU), which convert DC power to AC power, transformers and associated switch gears (with metering and protection). ??? The broad system specification for proposed 20MW grid interactive solar PV

# SOLAR POWER GENERATION EQUIPMENT IN THE PARK



The most recent data says that solar accounts for around 4% of Britain's total electricity generation, up from 3.1% in 2016. Solar power is the third most generated renewable energy in the UK, after wind energy and biomass. The UK is the third largest producer of solar energy in the EU, behind Germany and Italy.



The solar power plant is also known as the Photovoltaic (PV) power plant. It is a large-scale PV plant designed to produce bulk electrical power from solar radiation. The solar power plant uses solar energy to produce electrical power. Therefore, it is a conventional power plant. Solar energy can be used directly to produce electrical energy



Generation Power provides solar energy, electric vehicle charging and carbon reduction solutions for UK Commercial, Industrial and large scale residential properties. We get to know our clients' renewable energy needs, priorities and goals inside and out ??? to design, develop and manage a tailored solution in line with their business objectives.



Further, solar energy sector in India has emerged as a significant player in the grid connected power generation capacity over the years. It supports the government agenda of sustainable growth, while, emerging as an integral part of the solution to meet the nation's energy needs and an essential player for energy security.



The Xinjiang Solar Farm ??? with a capacity of 5GW ??? is the world's largest solar farm, followed by Golmud Solar Park ??? also in China ??? in second and India's Bhadla Solar Park in 3rd. Asian solar farms account for 12 ???

# SOLAR POWER GENERATION EQUIPMENT IN THE PARK



Solar power, also known as solar electricity, is the conversion of energy from sunlight into electricity, either directly using photovoltaics (PV) or indirectly using concentrated solar power. Solar panels use the photovoltaic effect to convert ???



Solar photovoltaic (PV) power generation is the process of converting energy from the sun into electricity using solar panels. Solar panels, also called PV panels, are combined into arrays in a PV system. PV systems can also be installed in grid-connected or off-grid (stand-alone) configurations.



Solar farms, also referred to as solar parks, solar gardens or more formally photovoltaic power stations, are growing in number and popularity across the U.S. thanks to the benefits they bring to states and residents in the form of savings on your electricity bills. Solar farms can vary in size, shape, type, and purpose. Despite some upfront challenges that ???



President Abdel Fattah El-Sisi opened this power plant via video conference while opening New Administrative Capital Power Plant. The solar energy is the most important source of energy on the globe, Egypt geographically lies between latitudes 22 and 31.5 north, so Egypt is at the heart of the global solar belt, and thus it is one of the richest world countries in solar energy.

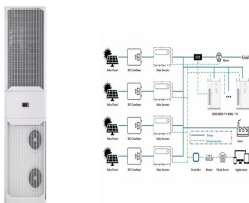


Keele University has officially opened its new Low Carbon Energy Generation park, including 12,500 solar panels as well as two wind turbines. The site, which was announced in 2020, also includes battery energy ???

# SOLAR POWER GENERATION EQUIPMENT IN THE PARK



1. Golmud Solar Park ??? China . Location: Qinghai Province, China; Capacity: 2.8 GW; Golmud Solar Park, a remarkable cluster of 80 solar power plants, marks a significant advancement in renewable energy within China. With an investment of \$587.22 million, it stands as a monumental project, capable of supplying energy to over a million households.



Solar power projects can be set up anywhere in the country, however the solar power projects developed in scattered manner leads to higher project cost per MW and higher transmission losses. Individual projects of smaller capacity incur significant expenses in site development, drawing separate transmission lines to nearest substation, procuring water and in creation of ???



Citing data from the China Electricity Council, in the first six months of 2018, the capacity factor of Chinese solar equipment was just 14.7%, says Xu. So while a Chinese solar farm may be billed



Cutting-Edge Technology Driving Solar Power Generation in Asia. Asia is moving towards green energy, mainly because of advances in solar panel technology. These advancements have made solar power more efficient and attractive. They have sparked a significant change in the growth of renewable energy, especially solar power.

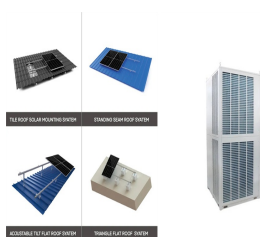


Power Park Module (PPM) Generating Units that are connected to the network either through power electronics (e.g. solar PV or electricity storage devices connected through an inverter) or All of the generation and/or storage equipment is located in a single installation.

# SOLAR POWER GENERATION EQUIPMENT IN THE PARK



The generating capacity of this park is 2050MW making it the world's second-largest solar power park after Bhadla solar park. Image Source: SolarCompare . The construction of this solar power park began in October 2016; by 9 April 2019, this solar power plant had a commissioned capacity of 1,400 MW.



This bill shows that Kris, a solar micro-generator who also happens to be the Owner/Operator of Park Power, used a total of 594 kWh for the month. Energy Charges Kris joined the Solar Club awhile ago, when rates were slightly lower, so he's got a fixed low export rate of \$.0619 (6.19?) per kWh. His total energy charges for 594 kWh were \$36.77.



The Tutow Solar Park is in Demmin, Germany, and is located at Tutow Airport. Juwi. Kothén Solar Park. map. Saxony-Anhalt. 45. 42. 116 ha (287 acres) Operational since 2009. a photovoltaic power station in K?then, Germany. It has a capacity of 45 megawatts (MW) and an expected annual electricity generation of 42 gigawatt-hours. RGE Energy. Jura

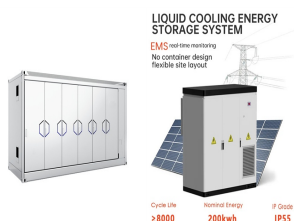


Don't consider it as exact income from 1MW solar power plant. The electricity generation shown above has been taken on an average basis. The exact electricity generation depends on daily sun hours/availability. Bhadla Solar ???



Your primary equipment decision is the brand and type of panels for your system. For an easy guide to comparing and contrasting the top panel brands, check out our complete ranking of the best solar panels on the market, which puts panels from SunPower, REC, and Panasonic at the top.. Some factors to consider as you weigh your options are efficiency, cost, ???

# SOLAR POWER GENERATION EQUIPMENT IN THE PARK



Grid Stability: 100,00,000 (10 million) solar panels are ready to serve the 2.25 GW power supply to make it a strong power generation system.

Conclusion: Solar power projects like the Bhadla Solar Power Plant are enabling India to lessen its reliance on non-renewable imported fossil fuels. This can help in having a great clean environment.



A typical solar photovoltaic power generation system consists of solar arrays (modules), cables, power electronic converters (inverters), energy storage devices (cells), loads that are users, etc.



Pavagada Solar Park, Karnataka (2,050MW) Pavagada solar park in Karnataka with 2,050MW of operational capacity is the second largest industrial solar park in the world.<sup>6</sup> The project, also called Shakti Sthala, is spread across 13,000 acres in Karnataka's Tumkur district. Land for the solar park is being leased for Rs21,000/acre annually (US



Solar power is one of the UK's largest renewable energy sources and therefore we're asked a lot of questions about it. Here we address some of the most frequently asked questions, myths and misconceptions surrounding ???



China continues its relentless expansion of solar power capacity, now home to the world's largest solar plant. The 2.2 gigawatt facility spans an area of over 25 square kilometers in the Gobi desert. This \$3 billion ???