

SOLAR POWER GENERATION OPERATION PLANNING AND DESIGN



Renewable energy plays a significant role in achieving energy savings and emission reduction. As a sustainable and environmental friendly renewable energy power technology, concentrated solar power (CSP) integrates power generation and energy storage to ensure the smooth operation of the power system. However, the cost of CSP is an obstacle ???



The efficiency (?? PV) of a solar PV system, indicating the ratio of converted solar energy into electrical energy, can be calculated using equation [10]: (4) ?? $P_V = P_{max} / P_{inc}$ where P_{max} is the maximum power output of the solar panel and P_{inc} is the incoming solar power. Efficiency can be influenced by factors like temperature, solar irradiance, and material ???



The challenges investigated for power system operations, control and planning in the article are as follows and a diagram visualizing the domains of the power sector along with the AI The complex and large design of the power system is The challenge in power generation planning lies in finding the optimal balance between cost and



Case Study: Building a Successful Solar Farm from Planning to Operation Background. Solar Panels Network USA embarked on a project to develop a solar farm aimed at generating clean, renewable energy for a local community. The project required meticulous planning, site selection, design, and execution to ensure the solar farm's success and



The power systems of today seem inseparable from clean energy sources such as wind turbines (WTs) and photovoltaics (PVs). However, due to their uncertain nature, operational challenges are expected when WT and PV energy is added to the electricity network. It is necessary to introduce new technologies to compensate for the intermittent nature of ???

SOLAR POWER GENERATION OPERATION PLANNING AND DESIGN



This guidance covers a large number of topics at a high level. Its goal is to provide an overview of the key elements that should be considered when designing and operating solar PV plants, including: location planning; PV design; yield prediction; markets and financing; contracting arrangements; construction, and; operation and maintenance.



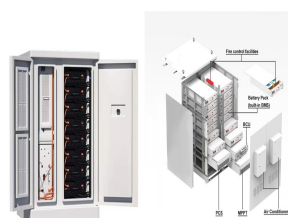
Figure 13 shows the 48-h power flow results. Due to the higher solar insolation, the output power of solar PV is much higher in summer. The peak power delivered by the 10-kW solar PV in summer and winter is 6.4 and 2.3 kW, respectively. In terms of the grid power, the total import and export energies are 18.41 and 71.49 kWh, respectively.



Being proven cost-effective technologies, currently solar PV and wind are the fastest deployed RESs in power generation [1]. However, solar PV power generation is impacted by changing weather



When it comes to systems integration, "planning" refers to near- and long-term power system designs under various generation and load scenarios; "operation" refers to real-time sensing, communication, and control that ensure system reliability.



Distributed Generation Systems: Design, Operation and Grid Integration closes the information gap between recent research on distributed generation and industrial plants, and provides solutions to

SOLAR POWER GENERATION OPERATION PLANNING AND DESIGN



Wind and solar power systems : design, analysis, and operation / Mukund R. Patel.--2nd ed. p. cm. Includes bibliographical references and inx ISBN 0-8493-1570-0 (alk. paper) 1. Wind power plants. 2. Solar power plants. 3. Photovoltaic power systems. I. Title. TK1541.P38 2005 621.31"2136--dc22 2005043904 Visit the Taylor & Francis Web site at



perfect because solar modules produce 95 percent of their full power when within 20 degrees of the sun's direction. Roofs that face east or west may also be acceptable. As an example, a due west facing rooftop solar PV system, tilted at 20 degrees in Salem, Oregon, will produce about 88 percent as much power as one pointing true south at the



The operations at the three locations provided several improvements to the UTSA SkyImager regarding weatherproofing techniques, environmental sensors, maintenance schedules, and optimal deployment locations. and a field of heliostats. Results showed that there is a strong and direct relationship between the solar multiple, power generation



These solar plants consist of large-scale arrays of solar panels mounted on the ground. To maximize solar energy capture, they can cover vast areas, such as open fields or deserts. Ground-mounted PV solar plants are commonly used for utility-scale solar power generation. ??? Rooftop PV solar plants. These solar plants are installed on the



ENEOS Renewable Energy is a company engaged in renewable energy power generation business: Preliminary surveys, planning, design, materials procurement and sales, civil engineering, electrical service, construction, operation, maintenance and inspection work, and electric power sales pertaining to power generation plants (wind, solar, biomass, and other ???

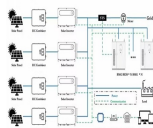
SOLAR POWER GENERATION OPERATION PLANNING AND DESIGN



Many scholars have conducted extensive research on the diversification of power systems and the challenges of integrating renewable energy. Wind and solar power generation's unpredictability poses challenges for grid integration, significantly affecting the stable operation of power systems, particularly when there is a mismatch between load demand and generation ???



The electrical and structural design of the solar project involves planning the electrical layout and plant sizing, including grid connection and integration. The design should take into account solar power quality considerations, such as harmonics and power factors, to ensure that the system meets grid interconnection requirements.



Integral aspects in operation of solar PV fleet Solar Power Europe [SPE] 2018. design, planning and management issues, O& M, market. Conventional power generation methods have also become ill-



Although hybrid wind-biomass-battery-solar energy systems have enormous potential to power future cities sustainably, there are still difficulties involved in their optimal planning and designing that prevent their widespread adoption. This article aims to develop an optimal sizing of microgrids by incorporating renewable energy (RE) technologies for ???



As recent deployments of renewable energy resources, such as solar photovoltaic (PV) and wind, reach very high penetrations within the power system, the variability, uncertainty, and asynchronicity of these resources can challenge the stable, economic, and reliable operation of the power system (Lund, 2005). Under high penetrations, variable ???

SOLAR POWER GENERATION OPERATION PLANNING AND DESIGN



This guidance covers a large number of topics at a high level. Its goal is to provide an overview of the key elements that should be considered when designing and operating solar PV plants, ???



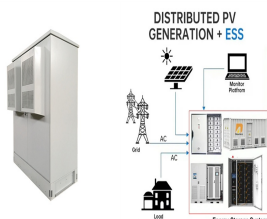
(1)Power optimisers are DC to DC converters and if installed at PV modules, they can maximise the electricity output of the PV system by constantly tracking the maximum power point (MPP) of each PV module individually. Power optimisers can also be installed for each PV string or PV array instead of each PV module.



Download Citation | On Feb 8, 2021, Mukund R. Patel and others published Wind and Solar Power Systems: Design, Analysis, and Operation | Find, read and cite all the research you need on ResearchGate

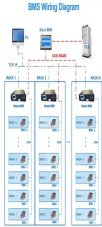


As a clean and controllable power generation technology, CSP has become a crucial option for flexible power generation in high RE penetrated power systems. This paper proposes a CSP modeling framework for power system optimal planning and operation, and comprehensively reviews the common CSP models and research status of the corresponding ???



The central role envisaged for solar power generation in supporting the decarbonisation of the UK energy sector is reflected in a draft revised planning policy designed to shape decision making on major renewable energy projects. it is often the case that landowners will agree to permissive paths being created for the operation of the solar

SOLAR POWER GENERATION OPERATION PLANNING AND DESIGN



The hourly operation of wind, solar, and hydropower throughout a year are considered, which has good robustness as it takes into account even the worst power generation conditions during the year. The modes of sufficient consumption capacity in the vicinity of the plant and the outbound transmission is not permitted are considered.