

# SOLAR POWER LAMP STRUCTURE



What is a solar lamp? A solar lamp, also known as a solar light or solar lantern, is a lighting system composed of an LED lamp, solar panels, battery, charge controller and there may also be an inverter. The lamp operates on electricity from batteries, charged through the use of a solar photovoltaic panel.



How do solar lights function? A solar light is a system of parts that works in harmony to generate power from solar exposure, store power, and re-use that power in an efficient manner to light a general or specific area. (Stephen Shickadance, 'How Solar Lights Work')



What is the difference between a solar light and a light fixture? The difference between them is in the design. Here is a basic overview of how a solar light works. There are four major components to any light; the solar panel, battery, control electronics, and the light fixture.



How are solar lights made? The production process for solar lights involves the extraction and processing of materials like silicon, metals, and plastics. Although manufacturing has environmental impacts, these are offset over the lifespan of the lights, which can span several years with proper maintenance.



What is a solar light system? The device can be used for small-scale lighting applications in remote areas that are far away from the power grid. The system has a panel to collect the sun's energy, a battery to store that energy and a light source to use the energy.



What materials do solar lights use? It may also use lead-acid, nickel metal hydride, nickel cadmium, or lithium. This part of the lamp saves up energy from the solar panel and provides power when needed at night when there is no light energy available.

# SOLAR POWER LAMP STRUCTURE



Butterfly wings inspire a better way to absorb light in solar panels / Taking inspiration from nature. By Angela Chen. Oct 19, 2017, 4:19 PM UTC and copied the structure to create thin solar



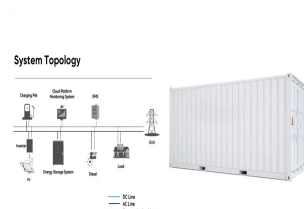
These solar panels are constructed from a single crystal structure of silicon, which gives them their characteristic seamless look with no visible grain lines. This type of solar technology is unique in its construction process. Unlike other solar panels, such as poly solar panels, monocrystalline panels are made by growing a single crystal.



Solar lamps contain solar panels that convert sunlight into electricity, which is then stored in a battery. This electricity powers the light emitting diodes (LEDs) in the lamp, providing illumination.

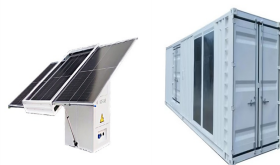


Understanding how to set up solar panels for shed is a game-changer for many homeowners. Solar energy not only offers an eco-friendly power source but also transforms sheds into fully functional workspaces, studios, or retreats. In this guide, we'll outline the essential steps, from sizing your solar panels to the installation process, ensuring you harness the sun's power ???



Over the world, there is a growing demand for Solar Power panels and mount structures. It is expected that India will become the world's largest solar nation by 2022, as there is large population growth. These are ???

# SOLAR POWER LAMP STRUCTURE



Conversion to Usable Power: The electricity generated by solar cells is in the form of DC power, which is then converted to AC power by an inverter for use in homes and businesses. System Integration: Solar panels, composed of multiple solar cells, are integrated into larger systems that may include batteries, inverters, and monitoring



Later space solar power concepts have driven towards modular and lightweight structures. The Integrated Symmetrical Concentrator concept 3 (see Figure 2b) consists of two reflector assemblies



We have developed a bracket that mounts on the side of a structure to allow for the solar to mount. It also provides for shelters located in snowy areas to have the solar mounted at the proper angle. which can be installed in remote locations or areas with frequent power outages. Additionally, solar lighting systems are cost-effective, as



At Solar Panels Network USA, we understand that the foundation of an efficient solar system lies in selecting the right mounting structure. Recently, we undertook a comprehensive project to install solar panels across different types of properties, including residential homes with pitched roofs, commercial buildings with flat roofs, and open land for a solar farm.



Selecting the correct mounting structure for your solar panels is crucial. This choice greatly influences the system's efficiency by determining the panels' orientation and angle towards the sun, optimizing sunlight capture and ???

# SOLAR POWER LAMP STRUCTURE



This professional, commercial grade, solar lamp post light is ideal for a variety of different applications. It's perfect for footpaths, school, trails, parks, promenades, housing estates and general recreation area lighting, etc. Supplied as a complete system. You also have a choice of



A solar light is a system of parts that work in harmony to generate power from solar exposure, store power, and re-use that power in an efficient manner to light a general or specific area. There are many variations to how the parts are ???



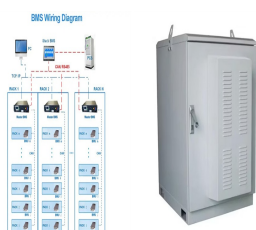
Manufacturing companies combine the power of Solar systems with energy-efficient LED technology and provide lighting solutions for public spaces. (such as parking lots, pavements, etc.) Here, we will take solar street ???



Most solar panels are still made using a series of silicon crystalline cells frame plays a critical role by both protecting the edge of the laminate section housing the cells and providing a solid structure to mount the ???



This is a great solar table lamp with a unique look and bright performance. This product can be charged by solar power very quickly. This is the feature that makes this product customer friendly. The overall dimension of the product is 3.5 inches wide, 4 inches deep and 16.5 inches tall.



What powers a solar street light? Off-grid solar street lights are comprised of a solar panel assembly mounted to the top of the pole and mounted to face south with no shading. The solar power system is wired to a battery assembly ???

# SOLAR POWER LAMP STRUCTURE



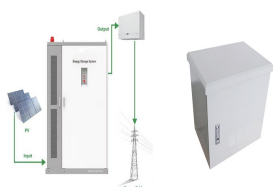
The solar street lighting system is a part of the complementary structure of the street consisting of: solar photovoltaic (SPV) module and its mounting pole, luminary (lamp), battery bank, and



I. Overview of Solar Panels Solar panels are a form of renewable energy that have been around since the early 1900s. They work by using light from the sun to create electricity, and they can be used in residential or commercial settings. Solar panels are becoming increasingly popular as an alternative source of energy, due to their efficiency



The LED solar integrated lamp fully solves the complex structure of traditional solar street lights. It is a solar street light that integrates solar panels, batteries (using ultra-long-life iron-lithium batteries with a cycle life of more than 2000 times), ultra-bright LED lights, intelligent controllers and other additional functional components.



However, solar panels are considered essential for a solar power plant. But do you know the role of the solar plant structure in installing the panels? The solar mounting structure is a crucial component of solar power plants that provides ???



New materials are being used as the structure of solar panels changes. Cadmium Telluride and perovskite are gaining ground. Perovskite's efficiency jumped from 3% in 2009 to over 25% by 2020. This growth shows how new materials could change solar energy's future. Thin-film Solar Cells: These are light and thin, great for portable needs



Here is a basic overview of how a solar light works. There are four major components to any light; the solar panel, battery, control electronics, and the light fixture. During the day, the solar panel produces power to charge the battery ???

# SOLAR POWER LAMP STRUCTURE



Solar panels today use this same basic design, with adjustments that have allowed industrial and commercial solar panels to achieve between 15% and 23% efficiency. How Solar Panels Work Silicon is an abundant material used in ???



Solar power modules help mitigate the drastic effects of global warming by reducing the carbon footprint. we will take solar street lights as a reference point to highlight and understand the structure of solar lights. A solar ???



Solar lighting systems provide security and illumination in needed areas when grid power is unattainable or costly to bring to a site. It is also great in applications where a company is looking for a grid alternative to showcase their green initiative, or for companies looking to get LEED points for a new project installation.. Solar lights are a great alternative and a cost-effective



3 ? Beautiful. Our LSX & GSX panels are both transparent glass allowing light to pass through the space in between the solar cells, creating beautiful dappled light.. Functional . Both module systems have unique, integrated mounting solutions that completely conceal all conductors and junction boxes for a clean, streamlined look.



Below is discussed the key solar structure parts name. 1. Solar Cells: Solar cells are the fundamental components of solar panels. A solar panel is made up of thousands of cells. These solar cells are strung together to form solar panels, which require soldering, encapsulation, mounting on a metal frame, testing, and so on. The efficiency of a



# SOLAR POWER LAMP STRUCTURE



Solar lights are a popular and environmentally-friendly lighting option that harnesses the power of the sun to provide illumination. The basic working principle of a solar light is simple: it converts sunlight into electricity, ???



A solar pergola is an outdoor structure with solar panels to generate electricity. The pergola can be connected to your home's electrical grid or be completely off-grid, depending on your needs. For example, if you want to power outdoor lighting, you will need a solar pergola with enough solar panels to supply the required wattage. Size



Pole Mounts: These elevate solar panels on a single pole, allowing for adjustments to optimize tilt and orientation. Tracking Mounts: These advanced ground mounts can automatically adjust the orientation of the solar ???