

# SOLAR POWER STATION IS A PITFALL

---



What are the disadvantages of solar energy? So, let's have a close look at the 10 biggest disadvantages of solar energy. 1. Lack of Reliability Solar energy is far from being reliable compared to other energy sources like nuclear, fossil fuels, natural gas, etc. Since solar energy depends on sunlight, it can only produce energy in the daytime.



Could solar power be the future of energy? A 2021 study by the National Renewable Energy Laboratory (NREL) projected that 40% of all power generation in the U.S. could come from solar by 2035. Solar's current trends and forecasts look promising, with photovoltaic (PV) installations playing a major role in solving energy problems like carbon pollution and energy dependence.



Why are solar panels so expensive? Since solar energy depends on sunlight, it can only produce energy in the daytime. Solar panels cannot produce energy at night so some systems can store energy ultimately making the system more expensive. Another method used by some solar panel systems is to use a backup from other non-renewable energy sources.



Why is solar intermittency a problem? Solar intermittency is the most obvious issue related to PV panel efficiency. The sun is not visible for 24 hours per day except for a short time each year at extreme latitudes. Solar power users need other power sources to use after sunset, and utilities cannot rely on solar alone to provide electricity for their customers.



Is solar energy inefficient and unreliable? For a country that already uses too much water for farmers, it is nearly impossible to use that much amount of water to produce solar energy. Considering the above-mentioned disadvantages of solar energy, it is safe to say solar energy is inefficient and unreliable.

# SOLAR POWER STATION IS A PITFALL



Is the solar energy sector ready to replace nuclear energy? The solar energy sector is not ready to be considered as a replacement for widely used energy sources like nuclear, coal, etc. The cost of solar panels may seem reduced over the years, but we must look at the fact that the solar industry is standing tall on subsidies and mandates from governments.



Solar thermal power plants are electricity generation plants that utilize energy from the Sun to heat a fluid to a high temperature. This fluid then transfers its heat to water, which then becomes superheated steam. This steam is then used to turn turbines in a power plant, and this mechanical energy is converted into electricity by a generator. This type of generation is essentially the same as a?



Solar farms, also referred to as solar parks, solar gardens or more formally photovoltaic power stations, are growing in number and popularity across the U.S. thanks to the benefits they bring to states and residents in the form of savings on your electricity bills. Solar farms can vary in size, shape, type, and purpose. Despite some upfront challenges that a?



"Then we retire these units prematurely, and you open the door for Georgia Power to come in and do a new build," he said, adding that building a new power plant costs more than a long-term



A space-based solar power station is based on a modular design, where a large number of solar modules are assembled by robots in orbit. Transporting all these elements into space is difficult

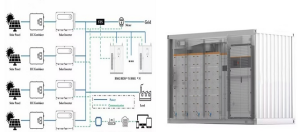
# SOLAR POWER STATION IS A PITFALL



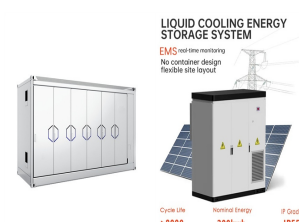
The risk of rack resonance instability is heightened simultaneously. The surge in such incidents has prompted power station owners to reassess their choice of oversized modules, considering the potential a?|



Solar intermittency is the most obvious issue related to PV panel efficiency. The sun is not visible for 24 hours per day except for a short time each year at extreme latitudes. Solar power users need other power sources a?|



The Global Impact and Adoption of Solar Power Stations. Around the world, countries like India tap into the sun's power for their energy needs. The impact of global solar power initiatives grows each day. India gets a?|



This also gives you an idea of whether or not your roof is a suitable spot for a solar system. 3. Sloppy Installation. Many solar systems may appear sturdy and impermeable, but it would do to tread lightly on them. Even with a professional's approval, solar panels are still complex, interconnected units.



Solar power can reduce a homeowner's electricity bills. If homeowners use solar energy instead of traditional energy resources, then it can result in a significant level of financial savings for them. When you look at the use of photovoltaic panels over 20 years, a savings of up to \$30,000 is possible with this technology.



A solar power station, also known as a solar farm or solar park, is a large-scale facility that harnesses solar energy to generate electricity. It consists of multiple solar panels or mirrors that capture sunlight and convert it into usable energy.

# SOLAR POWER STATION IS A PITFALL



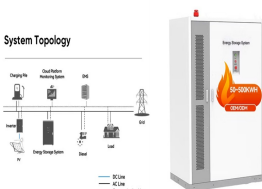
The largest solar power plant in the world is the Bhadla Solar Park, which was completed in 2020. This solar thermal power plant is located in Bhadla in the Jodhpur district of Rajasthan, India. The Bhadla Solar Park is a 2.25GW solar a?|



A solar photovoltaic power plant is a regular power plant that converts solar energy into electricity through the photovoltaic effect. This effect occurs when sunlight photons bump into a specific material and displace an electron, which generates a direct current.. a?|



The Key Components of a Successful Solar PV Power Plant. Solar energy systems need certain key parts to work well together. Installing solar panels is more than just putting them on roofs. It involves a mix of modern a?|



Aug. 19a??Lopsie Schwartz was looking for ways to lower her energy bill when the solar panel salesman knocked on her door in Northridge. Already a believer in green power, she didn't take much



How we test solar power banks and chargers. Getting consistent sunshine is a constant challenge for testing solar power banks and chargers, so we test them and any solar panels provided on sunny days in a south-facing garden, using the internal power meter or a plug-in USB power meter to find the ideal angle and position and evaluate how quickly the solar a?|



Anyhow, one pitfall with this product is its inability to support pass-through charging. We may have to unplug the generator from its power source before using it to run devices. And this Flashfish 200W Peak Power a?|

# SOLAR POWER STATION IS A PITFALL



A brief overview of some of the claims associated with solar power projects. SOLAR power is seen as a cost-effective way of achieving net zero targets. In 2021, the UK added 730MW to its solar capacity, taking the UK's overall a?|



The 40.5 MW Jannersdorf Solar Park in Prignitz, Germany. A photovoltaic power station, also known as a solar park, solar farm, or solar power plant, is a large-scale grid-connected photovoltaic power system (PV system) designed for the supply of merchant power. They are different from most building-mounted and other decentralized solar power because they supply a?|



Both portable power stations and solar-powered generators offer a level of portability that traditional generators simply cannot match. However, there are some distinctions worth considering. Portable power stations are a?|



Here's a list of the top 7 disadvantages of solar energy. Even though we, understandably, are in favor of solar, everyone should be aware of all the disadvantages of solar energy before committing to anything. #1 Solar a?|



Below are how to charge a portable power station using solar panels:  
 Prepare Solar Panels: Ensure you have compatible solar panels and the necessary connectors. Position Panels: Place the solar panels in direct sunlight for maximum efficiency. Connect to Power Station: Connect the panels to the power station's solar input port.

# SOLAR POWER STATION IS A PITFALL



The solar power cost alone is enough to scare the Pinoys away. Fortunately, financial support and incentives are available to help offset these expenses, making solar power more accessible for everyone striving for sustainability and a net-zero lifestyle, thus a vision of a solar Philippines becoming more achievable.



13. Solar collectors capture and concentrate sunlight to heat a synthetic oil called terminal, which then heats water to create steam. The steam is piped to an onsite turbine-generator to produce electricity, which is then transmitted over power lines. On cloudy days, the plant has a supplementary natural gas boiler. The plant can burn natural gas to heat the water, a?|



Also known as the Noor Power Station, the Ouarzazate Solar Power Station is the biggest operating solar power plant in the world, with an installed capacity of 510 megawatts. Spanning across the equivalent of 3,500 soccer fields, this power tower CSP solar plant The Moroccan Agency for Solar Energy has even installed PV solar panels to ramp up production a?|



Solar ponds are an interesting type of solar power plant Solar pond power plants use a pool of salt water to collect and store solar thermal energy. It uses a technique called salinity-gradient



The facility is touted as being the first solar power plant that can store more than 10 hours of electricity, which translates into 1,100 megawatt-hours, enough to power 75,000 homes.



# SOLAR POWER STATION IS A PITFALL

---



Buy the if you want the best budget solar power station; Buy the if you want the best solar power station with a solar panel bundle; Buy the if you want a rugged solar power station; Jackery



A solar farm, also called a solar power plant or photovoltaic (PV) power station, is a renewable energy plant comprised of many PV solar panels. Much like a solar energy system for homes, these solar panels absorb the sun's rays and convert that energy into electricity.



The 40MW pilot battery energy storage project in the Philippines has been switched on at the site of Alaminos Solar, a 120MW solar PV power plant in the municipality of Alaminos, Laguna, about 80km south of the a?|



The EcoFlow DELTA Pro smart battery connects to the EcoFlow DELTA Pro portable power station or solar generator. Connect two, and you can achieve up to 10.8kWh for a robust off-grid home backup or full-time RV living. A sleek LCD screen lets you check the battery's charge percentage, recharge time, and more. Plus, you can use the EcoFlow app