

SOLARGE BV WALLIS AND FUTUNA



Wallis is a volcanic island with cones and crater lakes to explore, and Futuna and Alofi lure the occasional traveller with mountainous landscapes covered in tropical forests and untouched coastline. Citizens of most countries can travel to Wallis and Futuna visa-free " some for unlimited time and some for a period of up to 90 days.



In Wallis and Futuna, masses are held in church to mark the start of a typical feast day celebration. The next highlight is the customary kava ceremony, generally followed by a katoaga, the presentation of offerings. The day ends with performances of traditional dances. Don't miss the chance to share in a vibrantly colourful day of



Wallis and Futuna is known for its customary festivals deeply rooted in its culture, giving rhythm to the daily life of its inhabitants. These ceremonies are called Katoaga and take place during a religious holiday (the different districts celebrate their patron saint each year), a family event or secular holidays such as July 14 or the



Wallis and Futuna - Agriculture, Fishing, Tourism: About four-fifths of the population of Wallis and Futuna engages in subsistence farming, growing yams, taros, bananas, and other food crops. Some livestock is raised (mostly pigs). The notion of selling produce from the land is contrary to traditional custom, wherein items are bartered and not sold. Similarly, ???



Wallis and Futuna, is a group of three volcanic tropical islands???Wallis Island (Uvea), Futuna Island, and Alofi Island???with fringing reefs located in the South Pacific Ocean between Fiji and Samoa, and about two-thirds of the way from Hawaii to New Zealand.The islands are approximately 125 miles (200 kilometers) apart. The small, remote territory of Wallis and ???



Barkcloth within Wallis and Futuna ??? "Uvea. The hiapo of "Uvea (Wallis Island) follows the general pattern of tapa production elsewhere in Western Polynesia: The soaking of the bast before beating lasted only a day, no beater mark was left on the face of the fabric, and larger cloths

SOLARGE BV WALLIS AND FUTUNA

were produced by pasting beaten sheets together at their edges into double layers in ???

SOLARGE BV WALLIS AND FUTUNA



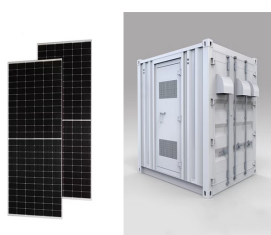
E-mail: sales@solarge . For any other questions, we are happy to assist you via: E-mail: info@solarge . We look forward to hearing from you!
Marconilaan 8 6003 DD Weert, The Netherlands +31 (0)85 239 1800.
Chamber of Commerce: 78002613. Solarge. Marconilaan 8 6003 DD Weert, The Netherlands



It is Wallis & Futuna's main international airport. In total there are 3 airports around the world that have direct flights to Wallis and Futuna Islands, spread around 3 cities in 2 countries. Currently, there is one domestic flight to Wallis and Futuna Islands. Wallis and Futuna Islands is mainly known for its nature and diving & snorkeling.



The installation includes 644 advanced Solarge solar panels, which together provide a lightweight, yet powerful energy solution. This project was created through the collaboration between Solarge, Generation Green, Sunbeam BV and Zoncoalitie. Thanks to their joint efforts and expertise, Cromwell European REIT now benefits from a sustainable



During the 16 th-century breakup of the Tu"l Tonga Empire, it was the last remaining Tongan stronghold on Wallis Island. Nearby Tonga Toto is a battle site related to this turbulent period of local history. #6. Climb mountains. ???



E-mail: sales@solarge . Voor overige vragen staan we u graag te woord via: E-mail: info@solarge . We kijken ernaar uit om van u te horen!
Marconilaan 8 6003 DD Weert +31 (0)85 239 1800. KvK: 78002613.
Solarge. Marconilaan 8 6003 DD Weert +31 (0)85 239 1800 info@solarge . KvK: 78002613. Snel naar. Doelgroepen Producten Projecten



Located over 16,000 kilometres from France, Wallis & Futuna are islands of immense natural beauty, far from the beaten track and still (mostly) undiscovered by tourists. According to official figures, around a hundred tourists visit Wallis & Futuna every year??? And boats docking each year

SOLARGE BV WALLIS AND FUTUNA

can be counted on the fingers of one hand!

SOLARGE BV WALLIS AND FUTUNA



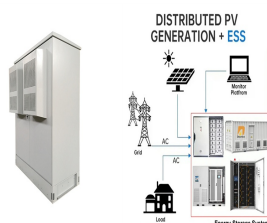
Company profile for solar panel manufacturer Solarge International BV - showing the company's contact details and products manufactured. Solarge. Solarge International BV Marconilaan 8, 6003 DD, Weert Click to show company phone <https://solarge>



Discover the story behind Solarge, where Dutch innovation and sustainable passion come together. As pioneers in the development of circular, lightweight solar panels, we lead the way to a greener future. Discover our vision, mission, and the unique factors that differentiate Solarge in the sustainable energy revolution. Learn more about our



Wallis and Futuna is an archipelago located in the Pacific Ocean at 13-14 degrees south of the Equator and belonging to France. The capital, Mata Utu, is located on the island of Uv?a (or Wallis). Of the three main islands, Wallis is flat, while in the other two there are hills, which reach 524 meters (1,719 feet) in Futuna and 400 meters



In 1991, BNP Nouvelle-Cal? (C)donie, a subsidiary of BNP Paribas, established a subsidiary, Banque de Wallis-et-Futuna, in the territory. Two years earlier Banque Indosuez had closed its branch at Mata-Utu, leaving the territory without any bank. Following this, the Bank of Wallis-and-Futuna (BWF) with its head office in Wallis was created in 1991.



File:Flag of Wallis and Futuna (1974-1985).svg (file redirect) File:Flag of Wallis et futuna (1910-1985).png; File usage on other wikis. The following other wikis use this file: Usage on ar.wikipedia ?????????? ?????????? ??????????-????? ?????????????????? 1979; Usage on cs.wikipedia

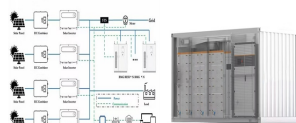
SOLARGE BV WALLIS AND FUTUNA



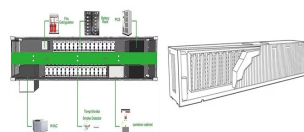
Visitors to Wallis & Futuna will find cozy accommodations at H?tel l"Albatros, situated near the airport on Wallis. Since it has only 3 bungalows and 4 single rooms which are frequently booked by business travelers, advance reservations are advised. Contact the hotel directly via phone or fax (681 72 18 27), or write for more information to



Trends in climate ??? past, present and future ??? always need to be understood in the context of the naturally occurring variability. Climate variability here, refers to the ways how climate conditions (e.g., temperature and precipitation) "flicker" from year to year within their respective typical "range of variability". The cause for this natural variability can be due to quasi



Il territorio di Wallis e Futuna (in francese Territoire des ?les Wallis et Futuna o Wallis-et-Futuna [1]; in uveano e futuniano: "Uvea mo Futuna) ? una collettivit? d"oltremare francese, composto principalmente da tre isole vulcaniche tropicali (Wallis, Futuna e Alofi) con scogliere areali che si trovano nella parte sud dell"oceano Pacifico, fra le isole Figi e Samoa, con 12 067 abitanti



?????(C)?????????>>????????????????? 3/4

????????????????????>>????????????????? 1/4 ??????(C)????????:

Collectivit? des ?les Wallis et Futuna ? 1/4 ?

?????????????(C)?????????(R)? 1/4 ?: collectivit? d"outre-mer; COM ? 1/4
?????????????????



Last but not least, interesting and very useful Wallis and Futuna facts that would be great to know: The Best Hiking Route in Wallis and Futuna: Wallis Hihifo - 2.64 kilometres, near: Malelapa, Uvea The Best Road Bike Routes in Wallis and Futuna: Wallis Hahake Mua - 27.57 kilometres, near: Halamaitai, Uvea Wallis Hahake Hihifo - 13.81

SOLARGE BV WALLIS AND FUTUNA



Wallis and Futuna is known for its customary festivals deeply rooted in its culture, giving rhythm to the daily life of its inhabitants. These ceremonies are called Katoaga and take place during a religious holiday (the different districts ???



edit Geography. Wallis and Futuna is located about two-thirds of the way from Hawaii to New Zealand, at 13°18'??S 176°12'??W (360 kilometres west of Samoa and 480 kilometres northeast of Fiji). The territory includes the island of Uv'a (the most populous), the island of Futuna, the essentially uninhabited island of Alofi (the population of Alofi was reportedly eaten ???



This page presents a high-level insight into extreme events and how extreme events differ from mean climate. Extremes are often related to different physical processes than those that govern long-term means. While an average change in precipitation is primarily due to circulation changes, extremes are much more sensitive to the thermodynamic state and conditions during specific ???



Due to the limited size and remoteness of Wallis and Futuna, official legal resources might not be readily available online. Finding the specific laws that define the minimum wage can be challenging. Potential Resources. French Labor Code: Wallis and Futuna's labor code likely references the French Metropolitan Labor Code (Code du travail) as a