

SOUTH GEORGIA AND SOUTH SANDWICH ISLANDS ENPHASE ENCHARGE



What is the future of South Georgia & the South Sandwich Islands? The future management of South Georgia and the South Sandwich Islands For more than two centuries, exploitation of the wildlife of South Georgia and the South Sandwich Islands has provided revenue, albeit interrupted as serial overharvesting has destroyed stocks, in some instances taking species to the verge of extinction (see Introduction).



How are the South Sandwich Islands managed? The South Sandwich Islands,actively volcanic,consist of a 390-km-long chain of 11 main islands. Fisheries in the South Georgia Maritime Zone are managed using an ecosystem approachaiming to conserve the marine environment. Key Words: sub-Antarctic,South Georgia,South Sandwich Islands,conservation,management,fisheries,tourism.



Should the South Georgia & South Sandwich Islands have a no-take marine area? Scientists and governments are calling for large no-take marine areas,free from industrial exploitation. The South Georgia and South Sandwich Islands Marine Protected Area is undergoing its second five-yearly review. Recovery of baleen whales coupled with climate change,means managers must be alert to alternative future ecosystem states.



Is South Georgia a small island? It is a remote and inhospitable collection of islands,consisting of South Georgia and a chain of smaller islands known as the South Sandwich Islands. South Georgia is 165 kilometres (103 mi) long and 35 kilometres (22 mi) wide and is by far the largest island in the territory.



What is the ccTLD for South Georgia and the South Sandwich Islands? The Internet country code top-level domain (ccTLD) for South Georgia and the South Sandwich Islands is .gs. The parts of the islands that are not permanently covered in snow or ice are part of the Scotia Sea Islands tundra ecoregion.

SOUTH GEORGIA AND SOUTH SANDWICH ISLANDS ENPHASE ENCHARGE



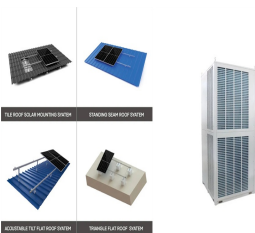
What happened to South Georgia and the South Sandwich Islands? In 1985, South Georgia and the South Sandwich Islands ceased to be administered as a Falkland Islands Dependency and became a separate territory. The King Edward Point base, which had become a small military garrison after the Falklands War, returned to civilian use in 2001 and is now operated by the British Antarctic Survey.



Revel in the immense vastness and immeasurable beauty of an Antarctica Cruise as you float past extraordinary landscape after extraordinary landscape on your journey to South Georgia Island from Argentina. Push your adventure-loving spirit out of its comfort zone as you take in the sea's icy surface and marvel at the towering glaciers that rise above you from aboard the ???



General Information. Capital: King Edward Point Other Main Settlements: Grytviken, Stromness (now abandoned) Currency: British Pound Language: English Population: Around 30 temporary residents, no permanent population. Area: 3903km² (including the South Sandwich Islands) Where is South Georgia Island? South Georgia Island is one of the most remote destinations ???

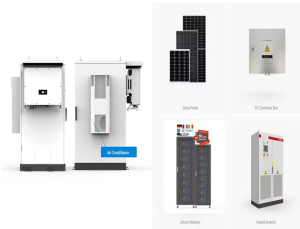


15. South Georgia Pintail. Another endemic bird species to South Georgia and nearby islands is the South Georgia pintail. It's also the only wildfowl that breeds in South Georgia, and one of the first species noted by Captain James Cook when he made the first recorded landing to ???



Countries of South America: Argentina ? Bolivia ? Brazil ? Chile ? Colombia ? Ecuador ? Guyana ? Paraguay ? Peru ? Suriname ? Trinidad and Tobago ??? ? Uruguay ? Venezuela Other territories: Aruba ? Bonaire ? Cura?ao ? Falkland Islands ? French Guiana ? South Georgia and the South Sandwich Islands ???: partly located in South

SOUTH GEORGIA AND SOUTH SANDWICH ISLANDS ENPHASE ENCHARGE



South Georgia and the South Sandwich Islands are a chain of Subantarctic islands in the Southern Ocean surrounding Antarctica. The islands are an overseas territory of the United Kingdom: they have no permanent residents and their administration is physically based in the Falklands, but since 1985 they have been a separate jurisdiction.



The ultimate goal of the Argentinian forces was to annex the South Sandwich Islands, South Georgia, and the Falklands. Despite these plans, however, the British moved in to re-take the territory, and on June 20, 1982, ???



About the Islands. South Georgia and the South Sandwich Islands is a remote inhospitable overseas territory of the British Government. The largest amongst smaller Islands that make up South Sandwich Islands. It is regarded as a sovereign state and separate from the Falkland Islands.



The future marine protection of South Georgia and the South Sandwich Islands has been a long-standing campaign for the APPG and our associate members, including the Pew Trusts, and featured in our recent "Keeping 1.5 alive" report, which sets out nine priorities for the forthcoming COP28 summit, which begins next week.



The government of South Georgia and South Sandwich Islands took further steps in 2018 after an environmental review to fully protected 23% of its waters. However, the rest of the area remained open to industrial fishing, which would disrupt food availability and the interconnected food web. Additionally, since the 2018 review, the impacts of

SOUTH GEORGIA AND SOUTH SANDWICH ISLANDS ENPHASE ENCHARGE



South Georgia & the South Sandwich Islands is a British Overseas Territory in the southern Atlantic Ocean. Stunningly beautiful and rugged, this island wildlife sanctuary, once visited, is not easily forgotten. Its snow covered peaks, blue glacier ice and emerald green bays are breathtaking sights.



The South Atlantic island of South Georgia, situated south of the Antarctic Convergence, was the first Antarctic territory to be discovered. [1] It was first visited in 1675 by Antoine de la Roch?, an English merchant born in London to ???



Like South Georgia, the South Sandwich Islands also support globally m Height of the territories highest peak, Mount Paget. ~60% Proportion of the territory under permanent snow/ice cover. 6 1: Natural and cultural heritage significant proportions of certain species, for example, Antarctic fulmars (Fulmarus glacialoides: LC)



South Georgia and The South Sandwich Islands : Stamps : Years List : Colnect. Buy, sell, trade and exchange collectibles easily with Colnect collectors community. Only Colnect automatically matches collectibles you want with collectables collectors offer for sale or swap. Colnect collectors club revolutionizes your collecting experience!

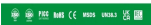
(South Georgia and South Sandwich Islands)???, 1982???



- OUTDOOR RACK MOUNT
- IP65
- OUTDOOR RACK MOUNT
- OUTDOOR RACK MOUNT

SOUTH GEORGIA AND SOUTH SANDWICH ISLANDS ENPHASE ENCHARGE

114KWh ESS



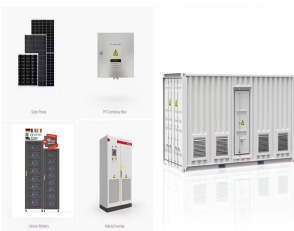
South Georgia and the South Sandwich Islands (SGSSI), a British Overseas Territory in the southern Atlantic Ocean, comprise a remote and pristine archipelago known for its rugged and glaciated landscapes, diverse wildlife, and significant historical heritage. With its capital, King Edward Point, and a non-permanent population of approximately 100, these ???



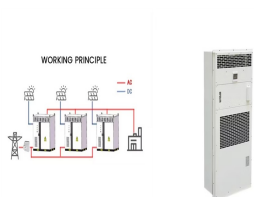
In 1775, The UK claimed supremacy over South Georgia and in 1908; over the South Sandwich Islands. 1985 marked the formation of the territory of "South Georgia and the South Sandwich Islands." Argentina declared rule over South Georgia in 1927, and the South Sandwich Islands in 1938.



In a significant step towards supporting marine conservation efforts in the South Atlantic, the Government of South Georgia and the South Sandwich Islands (GSGSSI) has announced the successful



Both island clusters float due-east of the southern Patagonian coast, with the Falklands being about 500km off the shores (about the latitude of Rio Gallegos, Argentina) and South Georgia and the South Sandwich Islands ???



Overlapping claim South Georgia and the South Sandwich Islands: United Kingdom / Argentina Flanders Marine Institute (2023). Maritime Boundaries Geodatabase: Maritime Boundaries and ???

SOUTH GEORGIA AND SOUTH SANDWICH ISLANDS ENPHASE ENCHARGE



This Order extends the boundaries of South Georgia and South Sandwich Islands, so as to include, as territorial sea, the sea within twelve nautical miles of the baselines, together with its seabed and subsoil, and makes other provisions in this connection. In particular, it defines the baseline from which the breadth of the territorial sea is measured as generally the low-water ???



The future marine protection of South Georgia and the South Sandwich Islands has been a long-standing campaign for the APPG and our associate members, including the Pew Trusts, and featured in our recent "Keeping 1.5 alive" report, which sets out nine priorities for the forthcoming COP28 summit, which begins next week.



Wildlife highlights of South Georgia and South Sandwich Islands. 1. Penguins: Salisbury Plain, St Andrews Bay, Gold Harbour, and Right Whale Bay house the four largest King penguin colonies, whereas Copper Bay offers a wide variety ???



Grytviken, South Georgia and the South Sandwich Islands - Climate and weather forecast by month. Detailed climate information with charts - average monthly weather with temperature, pressure, humidity, precipitation, wind, daylight, sunshine, visibility, and UV index data. Transitioning between excessive rainfall, the settlement experiences considerable ???

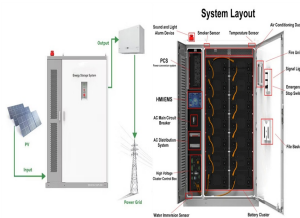


With 11 main islands and several smaller islets, the South Sandwich Islands are also part of the South Georgia British Overseas Territory, despite lying around over 700-kilometres southeast. Volcanic in origin, this island chain is incredibly inhospitable and consists of numerous perilous peaks, some of which remain active while others are snow-capped and heavily glaciated.

SOUTH GEORGIA AND SOUTH SANDWICH ISLANDS ENPHASE ENCHARGE



The Islands. South Georgia lies 1300 km SE of the Falkland Islands, and the South Sandwich Islands (SSI) a further 760 km SE, both between latitudes 53° 58' 54" S and longitudes 35° 47' 38" 01" W. The territory comprises approximately 805 islands.



South Georgia & the South Sandwich Islands are only accessible by sea. There is no visitor accommodation ashore, therefore most people visit by cruise ship or yacht. All visits require a visit permit. Visit permit applications for both commercial and private vessels are submitted by the vessel owners or operators. Individual passengers don't



in South Georgia and the South Sandwich Islands ??? ??? 2 ?C Die Durchsage kommt 10 min fr?her als sonst, da ein Buckelwal gesichtet wurde. Steigen mit halb offenen Augen in die Klamotten um kurz darauf mit Kameras auf das Meer zu sp?hen.