

SOUTH GEORGIA AND SOUTH SANDWICH ISLANDS RISEN COMPANY



South Georgia and the South Sandwich Islands. Published: September 2018. Citation: UNEP-WCMC. 2018, A review of terrestrial protected areas: South Georgia and the South Sandwich Islands. Cambridge, UK. The UN Environment World Conservation Monitoring Centre (UNEP-WCMC) is the specialist biodiversity assessment centre of



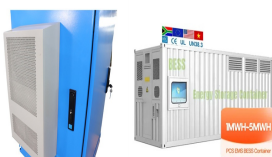
Recommended reading for every destination on earth: We found 18 books set in South Georgia and the South Sandwich Islands. Toggle navigation. Map; About; Add a book; Books set in South Georgia and the South PESCA: A History of the Pioneer Modern Whaling Company in the Antarctic by Ian B. Hart. Recommended by 1. South Latitude by F.D.OMMANNEY.



S?dgeorgien und die S?dlichen Sandwichinseln (von der Inselregierung verwendete Abk?rzung SGSSI [1]) sind ein britisches ?berseegebiet im S?datlantik, das aus S?dgeorgien und den S?dlichen Sandwichinseln besteht. Die Inseln sind 3677 km vom S?dpol entfernt. Da sie n?rdlich des 60. Breitengrades s?dlicher Breite liegen, fallen sie nicht in den Anwendungsbereich des ???



The sub-Antarctic island of South Georgia is one of nature's paradises and is rich in cultural heritage. SGHT is now working with FOSGI and the Government of South Georgia & the South Sandwich Islands to develop a cultural heritage programme that not only draws lessons from South Georgia's past but Company Number SC466431 +44 1382



Perched like small dots in the middle of the South Atlantic Ocean between South America, Africa, and the continent of Antarctica, South Georgia and the South Sandwich Islands have limited territory and a tiny population. ???

SOUTH GEORGIA AND SOUTH SANDWICH ISLANDS RISEN COMPANY



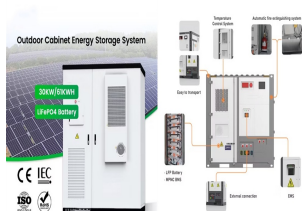
Krill at South Georgia & the South Sandwich Islands are not self-sustaining but dependent on the northerly movement of krill in the currents of the Southern Ocean from their spawning grounds under the ice in the Antarctic Peninsula and Weddell Sea. Krill reproduction is highly dependent on sea ice conditions and hence environmental factors.



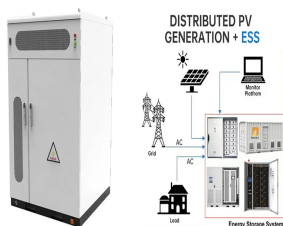
If you're considering exploring South Georgia and the South Sandwich Islands beyond the usual tourist spots, our comprehensive guide on South Georgia and the South Sandwich Islands tourist visa offers deeper insights and broader options for travelers of different nationalities. For those transiting through other countries en route to South



South Sandwich Islands, group of actively volcanic islets in the South Atlantic Ocean, north of the Weddell Sea and 470 miles (760 km) southeast of the island of South Georgia. They extend ???



South Georgia, sometimes referred to as Isla San Pedro, is an island that is located in the South Atlantic Ocean and is part of the British administration of the South Sandwich Islands and part of the British Overseas Territory of South Georgia. The island is located 1400km from the Falkland Islands and is about 170km long and 35km wide.



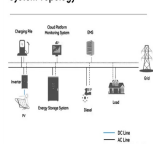
Our film "South Georgia ??? A Visitor's Guide" is compulsory viewing for all visitors to South Georgia. Its aim is to inspire visitors to respect and protect the island and its wildlife during their visit. Narrated by Sir David Attenborough, and produced by leading wildlife film-makers Silverback Films, the story showcases the incredible story of South Georgia's ecological recovery

SOUTH GEORGIA AND SOUTH SANDWICH ISLANDS RISEN COMPANY



South Georgia (as well as the South Sandwich Islands) are British Overseas Territories You can swim, but you can't fly ??? there's no airport, and you can only arrive by ship There are no permanent residents on South Georgia ??? South Georgia has had its ???

System Topology



The territory of South Georgia and the South Sandwich Islands was formed in 1985. Argentina raised a territorial claim for South Georgia in 1927 and for the South Sandwich Islands in 1938. Argentina maintained a naval station, Corbeta Uruguay on Thule Island in the South Sandwich Islands from 1976 until 1982 when it was closed by the Royal Navy

OverviewGeographyHistoryLanguagesClimateGovernmentEconomyEcology



Can you complete the fact file for the South Georgia and South Sandwich Islands? By Manicgamer04. 3m. 10 Questions. 40 Plays 40 Plays 40 Plays. Comments. Comments. Give Quiz Kudos. Give Quiz Kudos--Ratings. PLAY QUIZ Company. About Us Stats Jobs. Go Orange Blog. Resources. Feedback Report a Problem FAQ Community ???



Argentina did not protest about British sovereignty over South Georgia until 1927 and the South Sandwich Islands until 1938. (Antarctic Case, United Kingdom/Argentina Order, 16 March 1956). The British administered both territories some years before

SOUTH GEORGIA AND SOUTH SANDWICH ISLANDS RISEN COMPANY



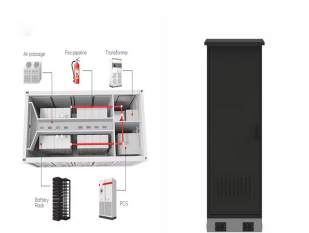
South Georgia is situated 800 miles SE of the Falkland Islands. The main island of South Georgia is approximately 170 km long and between 2 and 40 km wide and occupies an area of 3,755 km², more than half of which is permanently ice covered. The coast is rich in wildlife and home to huge colonies of penguins, seals and albatross.



The South Atlantic island of South Georgia, situated south of the Antarctic Convergence, was the first Antarctic territory to be discovered. [1] It was first visited in 1675 by Antoine de la Roche, an English merchant born in London to a French father. [2] He left Hamburg in 1674 as a passenger on a 350-ton vessel bound for Peru. [3] During the return journey, it was en route to Salvador ???



South Georgia and the South Sandwich Islands Basic statistics Current diversification (number of products) 57 Potential new products more complex (percentage) 44 Potential new products 1,196 Export opportunity in more complex products (percentage) 9 Potential new products more complex than the country's average 525



? 1/4 ?? 1/4 ? South Georgia and the South Sandwich Islands, SGSSI ? 1/4 ????? ,??? ,,3592 ???

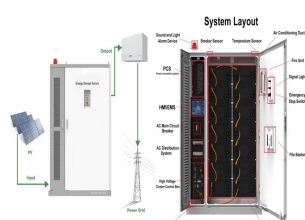


The South Georgia and South Sandwich Islands Marine Protected Area (SGSSI-MPA) is one of the world's largest MPAs, covering an area of 1.24 million km² (an area 5 x larger than the UK). It was established in 2012 with the aim of conserving the rich marine biodiversity within the Territory's maritime zone and provides a framework for our

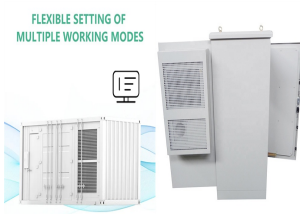
SOUTH GEORGIA AND SOUTH SANDWICH ISLANDS RISEN COMPANY



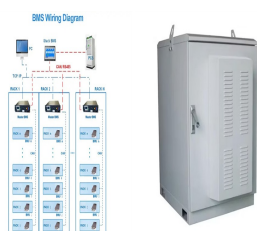
South Georgia and the South Sandwich Islands are a chain of sub-Antarctic islands in the Southern Ocean. They are located more than 2,000km from the continent of Antarctica but the ???



South Georgia is an island in the South Atlantic Ocean. Its nearest neighbour is the Falkland Islands, about 850 miles to the west. It's about 1120 miles from the tip of South America, and 1000 miles from the Antarctic Peninsula.



In January 1775 Captain James Cook, in the ship Resolution discovered the Isle of Georgia, which he had named in honour of King George III. It soon became known as South Georgia. Likewise, the neighbouring Sandwich Lands, which he named in honour of the Earl of Sandwich, First Lord of the Admiralty, became known as the South Sandwich Islands.



Immerse yourself in the largest king penguin colonies on the planet, home to an almost uncountable number of birds.; Wade ashore on South Georgia's beaches to watch battling bull elephant seals or playful fur seal pups gambolling in the ???

SOUTH GEORGIA AND SOUTH SANDWICH ISLANDS RISEN COMPANY



Summary. Welcome to our South Georgia & Antarctic Odyssey featuring the South Sandwich Islands expedition.. On this epic voyage, not only will you explore the famed white continent, discover the Falklands~Malvinas, encounter the wildlife haven in South Georgia, you will also sail to the South Sandwich Islands, a chain of seldom-visited volcanic islands located 740 km (460 ???



A list of 49 approved visitor sites is included as an annex in the Visiting South Georgia. Some approved sites are only suitable for Zodiac cruising and cruise ships carrying in excess of 200 passengers are only permitted to land passengers at certain sites.



South Georgia and the South Sandwich Islands: Country: United Kingdom: Abbreviations: GS, SGS: Capital: King Edward Point: Time Zones: 1: ??? Sunrise and ??? Sunset in South Georgia/Sandwich Is. (1 Location) King Edward Point: ??? 3:46 am: ??? 8:56 pm: How was your experience? Thank you for your feedback! Company. About us; Careers/Jobs



,???? 1/4 ?? 1/4 ?1300,, ???



Key Words: sub-Antarctic, South Georgia, South Sandwich Islands, conservation, management, fisheries, tourism. LOCATION AND PHYSICAL CHARACTERISTICS South Georgia is a crescent-shaped island(160 km long x recurrent expenditure has risen fairly constantly. Major public works projects have incurred significant capital expenditure

SOUTH GEORGIA AND SOUTH SANDWICH ISLANDS RISEN COMPANY



on South Georgia the role has expanded, as have the responsibilities. This is an exciting. time to join GSGSSI as we embark on a 5-year strategy delivering on a range of stretching. goals that continue to place us amongst the best in the world for balancing. environmental protection with precautionary use. South Georgia & the South Sandwich Islands