

SOUTH GEORGIA AND SOUTH SANDWICH ISLANDS SUN CREATE BATTERY



Is South Georgia a small island? It is a remote and inhospitable collection of islands, consisting of South Georgia and a chain of smaller islands known as the South Sandwich Islands. South Georgia is 165 kilometres (103 mi) long and 35 kilometres (22 mi) wide and is by far the largest island in the territory.



What is the ccTLD for South Georgia and the South Sandwich Islands? The Internet country code top-level domain (ccTLD) for South Georgia and the South Sandwich Islands is .gs. The parts of the islands that are not permanently covered in snow or ice are part of the Scotia Sea Islands tundra ecoregion.



What happened to South Georgia and the South Sandwich Islands? In 1985, South Georgia and the South Sandwich Islands ceased to be administered as a Falkland Islands Dependency and became a separate territory. The King Edward Point base, which had become a small military garrison after the Falklands War, returned to civilian use in 2001 and is now operated by the British Antarctic Survey.



Who owns South Georgia and the South Sandwich Islands? The United Kingdom claimed sovereignty over South Georgia in 1775 and the South Sandwich Islands in 1908. The territory of "South Georgia and the South Sandwich Islands" was formed in 1985; previously, it had been governed as part of the Falkland Islands Dependencies.



Are South Georgia and the South Sandwich Islands mountainous? South Georgia and the South Sandwich Islands are a collection of islands in the South Atlantic Ocean. Most of the islands, rising steeply from the sea, are rugged and mountainous. At higher elevations, the islands are permanently covered with ice and snow.

SOUTH GEORGIA AND SOUTH SANDWICH ISLANDS SUN CREATE BATTERY



When did South Georgia become a part of the Falkland Islands? The territory of "South Georgia and the South Sandwich Islands" was formed in 1985; previously, it had been governed as part of the Falkland Islands Dependencies. Argentina claimed South Georgia in 1927 and claimed the South Sandwich Islands in 1938.



Summary. Welcome to our South Georgia & Antarctic Odyssey featuring the South Sandwich Islands expedition.. On this epic voyage, not only will you explore the famed white continent, discover the Falklands~Malvinas, encounter the wildlife haven in South Georgia, you will also sail to the South Sandwich Islands, a chain of seldom-visited volcanic islands located 740 km (460 ???



A sequence of multi-faceted events and initiatives began to unfold in the hopes of adding protections to the area. The archipelagos became protected under the South Georgia and South Sandwich Islands Marine Protected Area (SGSSI-MPA) in 2012, becoming one of the world's largest MPA's, spanning an area of 1.24 million square kilometers.



South Georgia South Georgia and its associated smaller offshore islands, islets and stacks lie between the parallels of 53°00'S and 55°00"S, and between the meridians of 34°30'W and 42°00'W. These islands are very isolated, lying about 870 miles (1,400 km) east-south-east of the Falkland Islands, 963 miles (1,550 km) north-east of



South Georgia and the South Sandwich Islands are a chain of Subantarctic islands in the Southern Ocean surrounding Antarctica. The islands are an overseas territory of the United Kingdom: they have no permanent residents ???

SOUTH GEORGIA AND SOUTH SANDWICH ISLANDS SUN CREATE BATTERY



With 11 main islands and several smaller islets, the South Sandwich Islands are also part of the South Georgia British Overseas Territory, despite lying around over 700-kilometres southeast. Volcanic in origin, this island chain is incredibly inhospitable and consists of numerous perilous peaks, some of which remain active while others are snow-capped and heavily glaciated.



Let's create an exclusive trip for your group. Explore Tailor-Made trips . South Georgia Island at a glance. CAPITAL CITY. King Edward Point. POPULATION. 30. CURRENCY. GBP. LANGUAGE. English. TIME ZONE. South Georgia and the South Sandwich Islands (GMT-2) CALLING CODE +500. ELECTRICITY. Hydro powered. Learn more about South Georgia Island



Home Sun, Moon & Space South Georgia/Sandwich Is. Sunrise and Sunset in South Georgia/Sandwich Is. Time/General ; Weather ; Time Zone Waning Gibbous. Overseas Territory: South Georgia/Sandwich Is. Long Name: South Georgia and the South Sandwich Islands: Country: United Kingdom: Abbreviations: GS, SGS: Capital: King Edward Point: Time ???



About the Islands. South Georgia and the South Sandwich Islands is a remote inhospitable overseas territory of the British Government. The largest amongst smaller Islands that make up South Sandwich Islands. It is regarded as a sovereign state and separate from the Falkland Islands.



Our film "South Georgia ??? A Visitor's Guide" is compulsory viewing for all visitors to South Georgia. Its aim is to inspire visitors to respect and protect the island and its wildlife during their visit. Narrated by Sir David Attenborough, and produced by leading wildlife film-makers Silverback Films, the story showcases the incredible story of South Georgia's ecological recovery

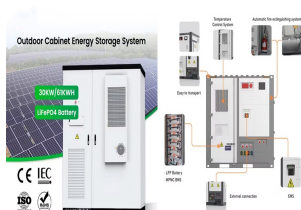
SOUTH GEORGIA AND SOUTH SANDWICH ISLANDS SUN CREATE BATTERY



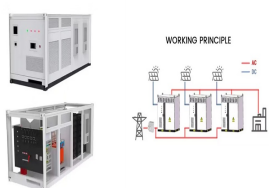
South Georgia and the South Sandwich Islands stand as testaments to the beauty and resilience of remote, uninhabited wilderness areas. Their ecological and historical significance, coupled with stringent conservation ???



South Georgia is an island in the South Atlantic Ocean that is part of the British Overseas Territory of South Georgia and the South Sandwich Islands lies around 1,400 kilometres (870 mi) east of the Falkland Islands. Stretching in the east???west direction, South Georgia is around 170 kilometres (106 mi) long and has a maximum width of 35 kilometres (22 mi).



Comprising two main groups of islands???South Georgia and the South Sandwich Islands???this remote and uninhabited territory is renowned for its ecological significance and historical heritage. Managed by a commissioner based in the Falkland Islands, approximately 1,390 km (864 miles) east-southeast of South Georgia, SGSSI is a vital destination for scientific ???



South Georgia and the South Sandwich Islands (English) 0 references. short name. Create a book; Download as PDF; Printable version; In other projects. This page was last edited on 27 November 2024, at 11:44.



By contrast, South Georgia and the South Sandwich Islands have an extremely active and very well-monitored MPA, and has done for now for some 10 or so years. Fishing around the South Sandwich Islands is very carefully monitored by the Government of South Georgia and the South Sandwich Islands.

SOUTH GEORGIA AND SOUTH SANDWICH ISLANDS SUN CREATE BATTERY



South Georgia and the South Sandwich Islands are a remote group of islands in the southeastern Atlantic Ocean, about 1000 kilometers east of South America. Officially, they belong to Scotland and are a British Overseas Territory. The ???



If you're considering exploring South Georgia and the South Sandwich Islands beyond the usual tourist spots, our comprehensive guide on South Georgia and the South Sandwich Islands tourist visa offers deeper insights and broader options for travelers of different nationalities. For those transiting through other countries en route to South

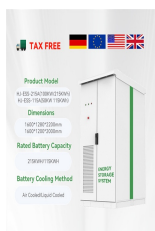
(South Georgia and South Sandwich Islands)???, 1982???



By contrast, South Georgia and the South Sandwich Islands have an extremely active and very well-monitored MPA, and has done for now for some 10 or so years. Fishing around the South Sandwich Islands is very carefully monitored by the Government of South Georgia and the South Sandwich Islands.



The project is expected to create a 400-megawatt solar array, generating roughly 876,000 megawatt hours (MWh) of electricity annually, enough to power more than 65,000 homes during daylight hours. Its 800-MWh ???



SOUTH GEORGIA AND SOUTH SANDWICH ISLANDS SUN CREATE BATTERY



The South Atlantic island of South Georgia, situated south of the Antarctic Convergence, was the first Antarctic territory to be discovered. [1] It was first visited in 1675 by Antoine de la Roch?, an English merchant born in London to ???



Recommended reading for every destination on earth: We found 18 books set in South Georgia and the South Sandwich Islands. Toggle navigation. Map; About; Add a book; Books set in South Georgia and the South Sandwich Islands 18 books set in



This Order extends the boundaries of South Georgia and South Sandwich Islands, so as to include, as territorial sea, the sea within twelve nautical miles of the baselines, together with its seabed and subsoil, and makes other provisions in this connection. In particular, it defines the baseline from which the breadth of the territorial sea is measured as generally the low-water ???



Grytviken - One of several former whaling stations in South Georgia. Understand . South Georgia and the South Sandwich Islands are rugged islands, rising out of the Southern Ocean. There are no indigenous residents, ???



South Georgia is an island in the South Atlantic Ocean that is part of the British Overseas Territory of South Georgia and the South Sandwich Islands. It lies around 1,400 kilometres (870 mi) east of the Falkland Islands. Stretching in the ???

SOUTH GEORGIA AND SOUTH SANDWICH ISLANDS SUN CREATE BATTERY



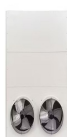
OverviewHistoryLanguagesGeographyClimateGovernmentEconomyEcology



South Georgia and the South Sandwich Islands are a United Kingdom Overseas Territory located in the South Atlantic Ocean. Geography . The SGSSI are a group of sub-Antarctic islands, located in the South Atlantic Ocean. This region is located to the east of the southern tip of South America and north of Antarctica. The islands include the Shags



A trip to South Georgia in the remote southern Atlantic reveals its 9,000-foot peaks and some 160 glaciers among converging ocean currents that feed some of the greatest densities of megafauna on the planet. It is a stop on many Antarctic tours, along with the Falkland Islands. South Georgia island is known for its large populations of king penguins, seals, and various sea birds, ???



The Government of South Georgia & the South Sandwich Islands (GSGSSI) and UK-based South Georgia Heritage Trust, in collaboration with many partners, are tackling some of these major challenges as outlined below.



GSGSSI has published the fees and charges for the 24/25 austral summer season. These will take effect from 1 July 2024. 80% of Government expenditure goes towards protecting the unique environment that is South Georgia and the ???

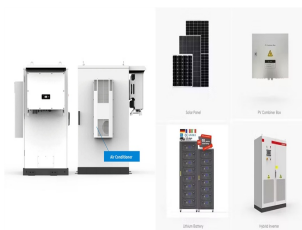
SOUTH GEORGIA AND SOUTH SANDWICH ISLANDS SUN CREATE BATTERY



This page shows the sunrise and sunset times in South Georgia and the South Sandwich Islands, including beautiful sunrise or sunset photos, local current time, timezone, longitude, latitude and live map.



South Georgia and the South Sandwich Islands are two groups of sub-Antarctic islands of the Southern Ocean east of the southern tip of South America, north of Antarctica. These islands are one of the most remote places in the world, with the only access being by sea. The Southern Ocean is one of the roughest in the world with storms that can make even the most hardened ???



South Georgia and the South Sandwich Islands. Published: September 2018. Citation: UNEP-WCMC. 2018, A review of terrestrial protected areas: South Georgia and the South Sandwich Islands. Cambridge, UK. The UN Environment World Conservation Monitoring Centre (UNEP-WCMC) is the specialist biodiversity assessment centre of