



-
- European Warehouse
- 7-15 days
- ONE-STEP SOLUTION
- 65kWh 30kW
- 130kWh 30kW
- 130kWh 60kW



Web: <https://twojaelektryka.com.pl>

SQUARE STEEL DIMENSIONS FOR PHOTOVOLTAIC PANELS



Solar panel size refers to the total amount of power a solar panel can generate over a period of time; Solar panel dimensions refers to the physical size of a solar panel; Solar panel sizes and wattage range from 250W ???



The results show that: (1) according to the general requirements of 4 rows and 5 columns fixed photovoltaic support, the typical permanent load of the PV support is 4679.4 N, the wind load



Here is a piece on Solar Panel Fixing Options built to help Developers, Contractors, Architects, and Homeowners grasp what's on offer for fixing PV panels. The problem is they can cost a lot more per square meter and aren't as efficient per square meter as standard panels. A-frames are simply aluminium or stainless steel frames that



Types of Solar Panels Brackets. There are different types available, including railless brackets, and top-of-pole mounts, the specific type of bracket or clamp chosen depends on factors such as the dimensions of the solar panel, installation method, and desired mounting angle for optimal exposure to sunlight.

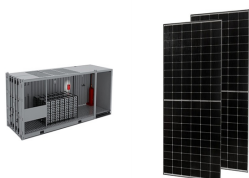


The average size of a solar panel cell measures 6" by 6" square. How many solar panels do I need for my home? The average home requires around 20 solar panels to completely offset its utility costs. How big is one solar panel? The ???

SQUARE STEEL DIMENSIONS FOR PHOTOVOLTAIC PANELS



Considering these variables, a solar panel roof load calculator can help you determine how much weight your roof can support. Let's dive into more specifics on these factors. 1. The roofing structure. Most importantly, ???



For a 6 KW solar panel installation consisting of 20 panels, the weight of just the panels will be close to 800 pounds. Here we are basing our calculations on an average thin-film panel weighing 40 pounds.



1. Solar Panel PV Wire. It is a well-known solar power wire that is used for connecting cabling in photovoltaic installations. The XLPE cable insulation provides remarkable resistance to ozone, ultraviolet radiation, and ???



Based on FMB's best solar panels, the average solar panel dimensions in the UK are: Solar panel size: 1,945.5mm (length) x 1,130.1mm (width) x 31.25mm (height) Weight: 23.6kg While there isn't much variation in width (six of our eight best panels measured 1,134mm) and height (all but one was 30mm tall), there were significantly different lengths.



????,? The most common solar panel sizes for residential installations are between 250W and 400W. A single solar cell has a square shape of 6" x 6". A 60-cell panel has a 6x10 grid arrangement. A 72-cell panel ???

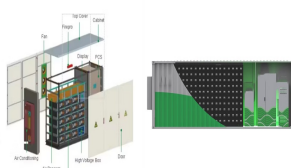
SQUARE STEEL DIMENSIONS FOR PHOTOVOLTAIC PANELS



The number of panels you will need depends on the desired size of your solar system (i.e., the total energy requirement). Common system sizes include 3kW, 4kW, and 5kW. For example, a typical 2kW system suitable for 1-3 people would require between 5 and 8 panels, assuming optimal positioning and efficiency and around 4 hours of sunlight per day.



Residential solar panels typically possess between 250W to 450W depending on how efficient they are in converting sunlight into energy and the solar panel sizes. Standard Solar Panel Size. Solar panels are available in a wide range of sizes, types, and total wattage. The standard solar panel size measures an average of 5.4 by 3.25 feet or 65 by



What are Solar Panel Dimensions in mm, cm, and feet for 300 W and 500W Solar Panel? Solar panel dimensions can vary with different factors like manufacturing. So, let's discuss some very common size solar panel dimensions in mm, cm, and feet. For 300 W and 500 W solar panel dimensions would be as follows:



The solar panel mounts are comprised of a steel tube and steel beams. The round or square steel tube can be used for the base of the solar panel mount, and the steel wide flange beams or I beams are used to secure the solar panel to the mount. If your solar application requires galvanized structural steel products, we are also able to supply



For example, a 1,500-square-foot house can need around 630 kWh each month while a 3,000-square-foot house can use 1,200 kWh. Note: Solar wattage may vary depending on house size and electricity consumption. Best Solar Panel Sizes and Wattage Calculator.

SQUARE STEEL DIMENSIONS FOR PHOTOVOLTAIC PANELS



Here are the standard solar panel sizes and dimensions to give you a better idea: 60-cell panels: Approximately 1.65 meters (5.4 feet) by 990mm (3.25 feet) 72-cell panels: Approximately 1.95 meters (6.4 feet) by 990mm ???



steel solutions for solar systems Structures for rooftop systems Kalypso(R) is a support system for PV modules which are fixed on pre-painted steel sandwich panels using the innovative and patented Ondafix(R) fixing rail. High performance sandwich panels with a 60 um paint coating, Hairexcel(R), are available in a wide variety of colours



Factors Affecting Solar Panel Output. Wattage Output: The output capacity of the panels. Panel Orientation: South is optimal, but anything from east to west through south is good. Roof Pitch: An angle of 32 degrees is ideal but again, there is some give here. Shading: Shade will significantly effect output. Look at micro-inverters if you have some shade.



Keywords: Photovoltaic (PV), Solar Panel (SP), Steel, Support Structure, Structural Design, square, rectangle) and sizes but their main purpose is to convert the sun light in order to make



PV panels are mounted on U-purlins which are in turn supported on existing building roof purlins. Roof top solar panel installation adds some dead load due to weight of panels and mounting systems. Once the size of the solar panel is fixed, the existing structure must be evaluated for added solar panel loads.

SQUARE STEEL DIMENSIONS FOR PHOTOVOLTAIC PANELS



Delta Steel, one of the largest structural steel service centers in the country, is well equipped to help with your solar panel projects. Whether your custom solar panel mounting systems require square or round tube, pipe, or wide flange beams, Delta ???



Elevate your solar installation with our versatile Solar Panel Mounting Brackets. Ideal for metal, flat, and corrugated roofs, our brackets offer sturdy support. As a leading manufacturer, we provide quality solutions for every solar need. Explore our ???



Solar panel steel structures are a vital component of the solar panel installation process. So, providing a safe and efficient way to generate clean energy. By understanding the benefits, design considerations, ???



This table shows the dimensions commonly found for solar panels according to their wattage.. It is important to note that the above table shows the most commonly occurring solar panel dimensions for each wattage.. However, these numbers can vary according to the solar panel model, manufacturer, efficiency, material used/frame size, etc.