

SQUARE WAREHOUSE CONVERTED TO ENERGY STORAGE



What is the future of energy storage? Storage enables electricity systems to remain in balance despite variations in wind and solar availability, allowing for cost-effective deep decarbonization while maintaining reliability. The Future of Energy Storage report is an essential analysis of this key component in decarbonizing our energy infrastructure and combating climate change.



How can a warehouse be more energy efficient? But American companies are beginning to take steps to make their warehouses more energy efficient, including upgrading building materials. And some warehouse owners are even turning the rooftops into solar farms that can power the building's operations and, in many cases, lower utility costs for nearby homeowners and businesses.



Does a warehouse use a lot of energy? It is shown that a significant part of the energy is spent on maintaining a warehouse building, especially in the case of facilities with a low degree of automation. Schematic warehouse layout. Topics that arise in the literature review on energy consumption by warehouses.



Do unrefrigerated warehouses use a lot of energy? Unrefrigerated warehouses, which make up the biggest chunk of storage buildings, typically use less than half as much energy per square foot compared with office buildings, according to the EIA. That's because there aren't so many computers to keep running or people to keep comfortable with air conditioning and hot water.



Are energy-efficient buildings and warehouses the future of logistics? And as the green movement in logistics continues to gain momentum, proponents are turning to the next big item on the agenda: energy-efficient buildings and warehouses. The industrial sector consumes more than half the world's total energy on the back of growing economic activity, which means there is plenty of room for improvement.

SQUARE WAREHOUSE CONVERTED TO ENERGY STORAGE



Why is energy storage important? Energy storage is a potential substitute for, or complement to, almost every aspect of a power system, including generation, transmission, and demand flexibility. Storage should be co-optimized with clean generation, transmission systems, and strategies to reward consumers for making their electricity use more flexible.



FLEX panels make warehouse conversion a snap. Make a chic, efficient office space out of an old warehouse building using these tips and ideas. Larger buildings, like 15-thousand square footers, work well for large companies. FLEX Building Systems designs, engineers and manufactures high-quality building and storage solutions that are



With the increase in e-commerce demand due to COVID-19, owners and developers are finding new opportunities by converting underperforming big boxes and shopping malls to warehouse and fulfillment center space. With large buildings, generally ample parking, and the typical access to major traffic corridors, these centers may have all the necessary ???



Warehouse conversions are renowned for their spacious high ceilings, exposed brickwork, and floor to ceiling windows that further add to the bright airiness of the properties. In the case of Palace Wharf, we restrict the preservation of brickwork to the building's exterior, where the building's name is ingrained in the wall with gleamingly



Inverters or Power Conversion Systems (PCS) The direct current (DC) output of battery energy storage systems must be converted to alternating current (AC) before it can travel through most transmission and distribution networks. With a bidirectional power conversion system (PCS), BESS can charge and discharge electricity to and from the energy

SQUARE WAREHOUSE CONVERTED TO ENERGY STORAGE



The overall budget of a warehouse-to-restaurant conversion can fluctuate a great deal. Generally, the cost of opening a restaurant can range from \$100 and \$800 per square foot. The added complexity of converting a warehouse to a restaurant could drive costs even higher. There are steps you can take to control these costs.



The ?vila Warehouse Conversion by Allaround Lab stands as a testament to the potential of adaptive reuse in architecture. Through minimalist design principles and a focus on functional living spaces, this project successfully transforms a once-industrial warehouse into a modern, habitable environment that respects its urban context and meets



For these partners, identifying energy efficiency opportunities is imperative both during new building construction and when retrofitting existing facilities. Qurate Retail Group is ???



1.2 Electrochemical Energy Conversion and Storage Technologies. As a sustainable and clean technology, EES has been among the most valuable storage options in meeting increasing energy requirements and carbon neutralization due to the much innovative and easier end-user approach (Ma et al. 2021; Xu et al. 2021; Venkatesan et al. 2022).For this purpose, EECS technologies, ???

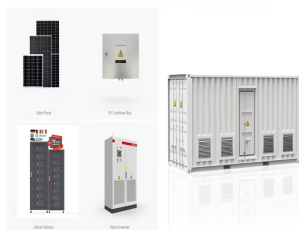


Our team of warehouse management experts has the experience needed to determine the space your products will require, no matter what they are. Once you've calculated the warehouse square footage needed, your next step is to begin your search for a warehouse location. Whether you are a small or large business, Spartan Logistics can help reduce

SQUARE WAREHOUSE CONVERTED TO ENERGY STORAGE



Cost of Building a 5,000 Sq. Ft. Warehouse. A 5,000-square-foot warehouse typically costs between \$25 and \$40 per square foot. This works out to an average of \$35,000-\$95,000 for the metal building kit, \$20,000-\$45,000 for the foundation, up to \$1,000 for delivery, up to \$2,500 for planning permission, and \$25,000-\$50,000 for erection costs and



This technology is involved in energy storage in super capacitors, and increases electrode materials for systems under investigation as development hits [[130], [131], [132]]. Electrostatic energy storage (EES) systems can be divided into two main types: electrostatic energy storage systems and magnetic energy storage systems.



Self Storage Conversions May Be Quicker to Complete. In many cases, converting an existing building into a self storage facility will be faster than new construction. According to Inside Self Storage, conversion projects can cost as little as 37-50% of a new build per square foot (depending on needs and construction material costs). However



The trust leases the 1.1-million-square-foot building to Penguin Random House ??? it's used to store and ship out products from Marvel Comics ??? and its 23-acre roof to Summit Ridge Energy, a



The building sector contributes to around 33 % of global final energy consumption in 2020, where about 15.5 % of the building energy use is supplied by renewables [9]. The energy consumption in buildings of top ten regions in 2020 is shown in Fig. 1 contributing to a global proportion of about 67 % [9] can be found that the building energy consumption ???

SQUARE WAREHOUSE CONVERTED TO ENERGY STORAGE



Best Practices in Cold Storage; with plans to convert a 351,782-square-foot office building and adjacent land site into two Class A warehouse/distribution buildings totaling more than 426,000 square feet. The structure started out as a warehouse, was converted to a 106,000-square-foot corporate office and now will return to its roots as



Real estate development company Platform II-Wisconsin LLC intends to convert a historic warehouse on Milwaukee's west side to self-storage. The company acquired the eight-story, 102,600-square-foot building at 3742 W. Wisconsin Ave. for \$1.8 million from Coakley Wisconsin Avenue LLC. The storage facility is expected to comprise 1,000 units, with project ???



Self-storage facilities (a subset of the "Warehouse/Storage" category) generate, on average, 60% of all their electricity needs from onsite renewables. Hospitals generate only 7% of their (very ???

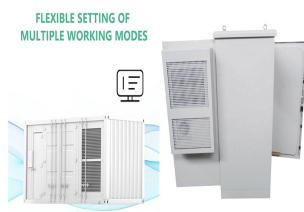


Unrefrigerated warehouses, which make up the biggest chunk of storage buildings, typically use less than half as much energy per square foot compared with office buildings, according to the



To determine if conversion is the right self-storage development approach for your project, read about pros and cons, site selection, facility design and more. Increasing the square footage of the building via a footprint expansion or through the addition of more structures can be another great option. This allows you to add a new product

SQUARE WAREHOUSE CONVERTED TO ENERGY STORAGE



There are plenty of vacant office buildings available in today's market for possible conversion to self-storage. While this development path can be a real time- and cost-saver, there are important considerations. Most likely, this will require upgrading. Energy-code compliance has only been around since 2012, and chances are that your



The energy storage systems in general can be classified based on various concepts and methods. One common approach is to classify them according to their form of energy stored; based on this method, systems which use non chemically solution water as their primary storage medium for solar applications, can be fell into two major classes: thermal



Compared to the reference system without energy storage, the introductions of a cold energy storage system and an electrical energy storage system can reduce the operational cost by 10 and 53.7%



We estimate that the United States had just over 1 million warehouse and storage buildings as of 2018 and a total floorspace of 17.4 billion square feet. This survey marks the first time since CBECS was released in 1979 that warehouse and storage buildings were the most common building type, ranked by both number of buildings and by total

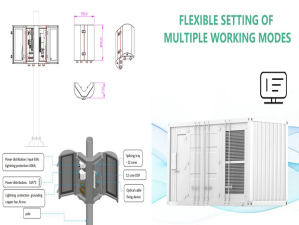


The vanadium flow battery (VFB) as one kind of energy storage technique that has enormous impact on the stabilization and smooth output of renewable energy. Key materials like membranes, electrode, and electrolytes will finally determine the performance of VFBs. In this Perspective, we report on the current understanding of VFBs from materials to stacks, ???

SQUARE WAREHOUSE CONVERTED TO ENERGY STORAGE



Discover awe-inspiring warehouse to home conversions that offer open space, historic charm, and a unique urban design. Learn more about the cost and benefits of these stunning transformations. Expect to pay between \$35 and \$250 per square foot. There are many factors involved so the only way to keep costs down is to explain your ideas



While retrofitting a building into self-storage can be a rewarding and successful project, there are also many pitfalls to avoid. New federal energy-efficiency standards in lighting took effect in July. Its likely your building has older, inefficient bulbs and ballasts. Estimated cost would be \$40,000 to \$60,000 for a typical 50,000



Depending on what you plan to use the building for, the requirements could vary significantly. Apartments, storage units, offices, restaurants, and retail spaces all have unique needs. They also consume a lot more energy. Estimate your costs for maintenance and usage before starting a warehouse conversion project to make sure these expenses



According to Steven Weinstock, a Marcus and Millichap first vice president who leads the firm's self-storage team, "This year, we are expecting about 60 million [square feet of self-storage space] to be delivered; eight million of it is forecast to be conversions." While this quote is from early March, COVID-19 likely doesn't limit the