

STEEL STRUCTURE COMPANY

PHOTOVOLTAIC SUPPORT



What are solar support structures? Solar support structures are an optimal solution for various applications such as parking garages, solar farms, carports, canopies, charging stations, ground mounts, and roof mounts at Nucor Buildings Group. Our projects range from highly architectural solar canopies to large institutional, commercial and utility scale solar installations.



Who are solar steel? Solar Steel are manufacturers of steel modular ballasted support systems for commercial PV and Thermal collector project installations. We supply support systems for Landscape and Portrait installations in any configuration. All of our materials are UK only sourced to provide the highest quality systems along with unbeatable 15 year guarantees.



Who are solar steel & imports? Solar Steel and Supports are the two companies in the group dedicated to designing and supplying ad hoc photovoltaic solutions for each type of project. We design and supply solar trackers and fixed structures for the solar photovoltaic sector with global design, manufacturing and supply capabilities.



What makes ArcelorMittal support structures more sustainable? n of sunlight using photovoltaic (PV) and solar thermal technologies. Using steel to build the support structures makes it eve more sustainable as steel is a durable and 100% recyclable material. ArcelorMittal supports the move to clean energy generation by offering high-performance steels, advanced metallic coat



What are NBG solar structures? NBG Solar Structures are custom-engineered elevated steel structures designed to support solar panels used in various applications such as parking garages, solar farms, carports, canopies, charging stations, ground mounts, and roof mounts.

STEEL STRUCTURE COMPANY PHOTOVOLTAIC SUPPORT



Who is Gonvarri solar steel? Product design is based on industry best practice, with a strong R&D component, seeking cost-optimised and efficient customised solutions. Gonvarri Solar Steel focuses on the research, design and supply of metal structures for the solar photovoltaic sector.



Nucor Buildings Group Solar Structures is our division that provides custom-designed and engineered solar structures that support photovoltaic (PV) systems. This includes: ??? Carports ??? Canopies ??? Solar Farms ??? Charging Stations NOW IS THE TIME TO FIND A SUPPLIER THAT's A TRUE PARTNER IN THIS GROWING INDUSTRY.
2 3



Based on the research characteristics of the C-shaped steel structure of the photovoltaic agricultural greenhouse, the stress and strain under the design load of the solar cell module support are



A trusted leader in solar PV mounting systems. Designing, manufacturing and supplying. Since the incorporation of SUNFIXINGS in January 2011, we've strengthened our presence in the solar industry as a trusted leader in designing, manufacturing and supplying quality solar PV mounting systems. Through our continued flexibility and innovation



We supply support systems for Landscape and Portrait installations in any configuration. All of our materials are UK only sourced to provide the highest quality systems along with unbeatable 15 year guarantees. As a flat roof specialist all of our systems include fully compatible protection bases for soft membrane roof structures as standard.

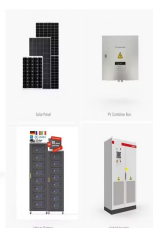
STEEL STRUCTURE COMPANY PHOTOVOLTAIC SUPPORT



We make structures using steel sourced from the world's best suppliers, together with Magnelis corrosion protection, which allows for a guarantee on the substructure of up to 25 years. We manufacture structures for ground-mounted photovoltaic panels up to and including standard C3 conditions (urban and industrial environments with medium sulphur oxide pollution and coastal ???



All the profiles used in our solar panel structure systems are made of S350-GD galvanized structural steel (from Zn 450 up to ZnMg 310 gr/m?), corrosion resistant, have a very low weight and have a high strength. Because of this, the structure ???



Gonvarri Solar Steel focuses on the research, design and supply of metal structures for the solar photovoltaic sector.. Our great capacity in R& D, and our extensive experience supplying solar trackers and fixed structures to projects ???



The construction of solar energy systems, mainly steel materials have a favorable custom in structural engineering applications, but the aluminum alloy is increasingly being used due to its



In recent years Axial Structural Solutions has undergone a consolidated growth that has led it to be a company of reference in the photovoltaic sector. Mission To provide our customers with quality structural systems, responding to all their needs throughout the process of design, manufacture and installation, fulfilling the commitment acquired with them and reaching the ???

STEEL STRUCTURE COMPANY PHOTOVOLTAIC SUPPORT



manufacturers of support systems for photovoltaic modules, steel roofing, guttering and fencing systems, and structural profiles. We specialise in the implementation of large photovoltaic farms in the "Turn Key" formula. Our offer is a comprehensive service with 4 elements: consultancy, design, production and delivery of the structure to the site.



Executive standard: GB/T 6723-2017 General cold-formed open section steel NB/T 10115-2018 Design rules for photovoltaic support structures. Scope of application: Provide support for solar photovoltaic panels and is an important part of photovoltaic power generation systems. Materials: Q235B-Q355B, SD402, SD550, SD350. Production workshop



Gonvarri Solar Steel carries out large-scale ground-mounted photovoltaic projects. Gonvarri Solar Steel designs and supplies solar trackers and fixed tilt structures for the PV market, with top-notch solutions and the highest quality standards which positions the company among the worldwide leaders in track record and installed power Gonvarri Solar Steel has more than 20GW supplied ???



Solar Steel are manufacturers of steel modular ballasted support systems for commercial PV and Thermal collector project installations. We supply support systems for Landscape and Portrait ???



Keywords: Photovoltaic (PV), Solar Panel (SP), Steel, Support Structure, Structural Design, Finite Element Analysis (FEA) 1. Introduction Solar energy is a hopeful, sustainable, new kind green

STEEL STRUCTURE COMPANY

PHOTOVOLTAIC SUPPORT



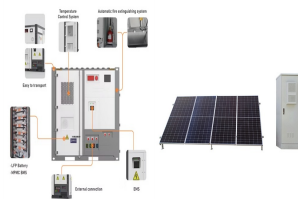
It can also be used for kinds of shelves, ceiling frames, drywall partition, steel structure building, and so on. The series of Hangzhou Roll Forming Technology's solar PV support forming machines can produce double-in-roll c-shaped steel photovoltaic brackets with consistently high quality at a stable speed.



It is a large-scale specialized steel structure enterprise that integrates steel structure research and development design, production, processing, manufacturing, and installation. Our unit has obtained and operates management systems such as ISO9001, ISO45001, and ISO14001, and possesses the ability to produce and test non-destructive testing of steel structures.



Competitive Price Q235 Steel Photovoltaic Panel Support In Guangzhou:
PV Module: Framed: Tilt Angle: Up To 60° Wind Load: Up To 60m/s:
Application: Solar Panel System: Warranty: 10years: Snow Load:
1.5kn/sqm: Standard: AISI,ASTM,BS,GB,DIN,JIS,ETC: Thickness:
0.5-15mm: Material: Q235 Steel Or Aluminum: High Light: Photovoltaic
Solar Panel



Loom Solar is one of the premium solar module mounting structure company in India with capacity ranging from 50 W to 1 MW. Mounting structures are the backbone of a solar power plant as they provide support to modules. These support structures raise solar panels at appropriate angles to ensure that they receive maximum solar irradiation



RRE PV(C) ??? MAX ONE support system for photovoltaic panels with 1 sectional pole and 4 panels mounted in landscape format (horizontally). This is an extremely sturdy and economical structure, considering that it supports 4 ???

STEEL STRUCTURE COMPANY

PHOTOVOLTAIC SUPPORT



PV Panels mounting 6. SELECTED PARTNERS FOR INSTALLATION
2014 : BEDARIEUX in FRANCE (34) -7 MW -Foundation : Slab support
??? Structure : dual poles STEEL STRUCTURE FOR SOLAR PLANTS.
2015 : LAFORET in FRANCE (15) -12 MW -Foundation : Rammed poles
??? Structure : single pole STEEL STRUCTURE FOR SOLAR PLANTS.



Using steel to build the support structures makes it even more sustainable as steel is a durable and 100% recyclable material. ArcelorMittal supports the move to clean energy generation by ???



focus of attention. At present, the photovoltaic support is mostly steel structure in the market, but the aluminum profile has the characteristics of light weight, beautiful appearance, corrosion resistance and other characteristics, which has attracted the attention of the market [1-4]. Compared with the automatic tracking support, the fixed



13.2.1 PV Panel Support Systems. Solar PV panels are placed on a floating structure called a pontoon. It is usually made up of fiber-reinforced plastic (FRP), high-density polyethylene (HDPE), medium-density polyethylene (MDPE), polystyrene foam, hydro-elastic floating membranes or ferro-cements to provide enough buoyancy and stability to the total ???



and 5 columns fixed photovoltaic support, the typical permanent load of the PV support is 4679.4 N, the wind load being 1.05 kN/m², the snow load being 0.89 kN/m² and the seismic load is 5877.

STEEL STRUCTURE COMPANY

PHOTOVOLTAIC SUPPORT



PV Support Structure. MEVACO, with extended experience on steel construction, manufactures and delivers PV support structures. To date, many configurations have been delivered at various tilt angles and configurations worldwide, counting more than 1000MWp (1GWp). The Company. Profile. Activities. Management & Organization Chart. Quality



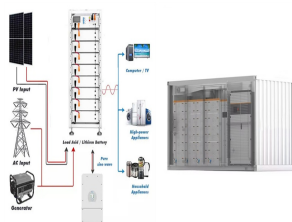
Project Introduction of Photovoltaic Power Plant Project in Algeria The photovoltaic power plant project in Algeria is a significant undertaking that showcases the capabilities and expertise of Huahengyuan Steel Structure. Launched on March 11, 2021, and completed on January 13, 2022, this proje



Solar panel systems are an efficient use of space, bringing shade and clean energy to your building or parking lot. Over 100 million metric tons of carbon emissions are reduced yearly, with the use of solar power. With the practical and climate benefits solar power offers, it makes sense to incorporate solar panel structures to your business.



When it comes to selecting the material for photovoltaic (PV) support structures, it generally adopts Q235B steel and aluminum alloy extrusion profile AL6005-T5. Each material has its advantages and considerations, and the choice depends on various factors. Let's compare steel and aluminum for PV support structures: 1.Strength and Durability



Tianjin Wencheng Solar Co.,Ltd. was founded in 2021, focusing on centralized, distributed, complementary and the company is a comprehensive enterprise of clean energy power generation, such as agricultural and photovoltaic complementation. The company integrates design, research and development, production and manufacturing

STEEL STRUCTURE COMPANY PHOTOVOLTAIC SUPPORT



The support material needs to be strong and stiff enough to withstand the weight of the PV modules and wind loads. At present, solar steel brackets mainly use lightweight structural steel and small-section ordinary steel structural steel, which ???