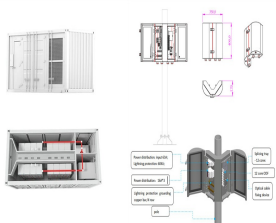
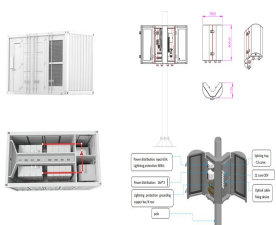


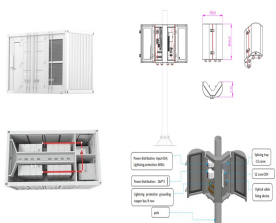
# STORAGE POWER STATION HEARD AND MCDONALD ISLANDS



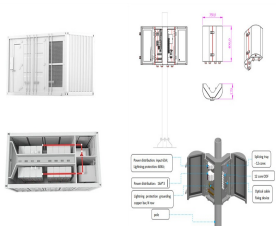
Why are Heard Island and McDonald Islands isolated? However, the site's isolation assists in reducing anthropogenic impacts upon the site's values. Heard Island and McDonald Islands are located in the Southern Ocean, approximately 1,700 km from the Antarctic continent and 4,100 km south-west of Perth.



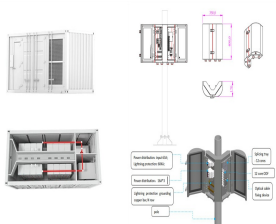
Will the government quadruple Heard Island & McDonald Islands Marine Reserve? The Pew Charitable Trusts' national oceans manager, Fiona Maxwell, said: 'We welcome the government's decision to quadruple the size of Heard Island and McDonald Islands Marine Reserve and to expand fully protected sanctuary zones within the park.'



Is there a threat to Heard Island and the McDonald Islands? Ongoing and accelerating climate change poses an increasing risk of fundamental alterations in biodiversity. Geological processes (primarily volcanism and glacial retreat) continue undisturbed. The overall assessment is that there is a low threat to the World Heritage values of Heard Island and the McDonald Islands if visitation remains low.

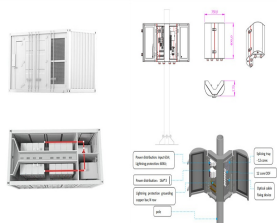


What is the difference between Heard Island and McDonald Island? Heard Island - 80% ice-covered, bleak and mountainous, dominated by a large massif (Big Ben) and an active volcano (Mawson Peak); McDonald Islands - small and rocky fish Mawson Peak, an active volcano, is on Heard Island

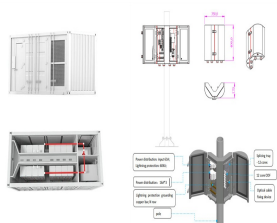


Where are Heard Island and McDonald Islands located? The islands are a territory (Territory of Heard Island and McDonald Islands) of Australia administered from Hobart by the Australian Antarctic Division of the Australian Department of Climate Change, Energy, the Environment and Water.

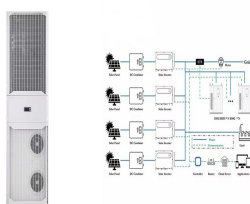
# STORAGE POWER STATION HEARD AND MCDONALD ISLANDS



How big is Heard Island & McDonald Islands? The group's overall land area is 372 km<sup>2</sup> (144 sq mi) and it has 101.9 km (63 mi) of coastline. Discovered in the mid-19th century, the islands lie on the Kerguelen Plateau in the Indian Ocean and have been an Australian territory since 1947. Heard Island and McDonald Islands contain Australia's only two active volcanoes.



Heard and McDonald Islands. Heard Island and McDonald Islands are located in the Southern Ocean, approximately 1,700 km from the Antarctic continent and 4,100 km south-west of Perth. intact ecosystems provide opportunities for ecological research investigating population dynamics and interactions of plant and animal species, as well as



Introduction. Pumped storage power plants are a type of hydroelectric power plant; they are classified as a form of renewable (green) power generation.. Pumped storage plants convert potential energy to electrical energy, or, electrical energy to potential energy. They achieve this by allowing water to flow from a high elevation to a lower elevation, or, by pumping water from a ???



The flags of Heard Island and McDonald Islands are identical to those of Australia. The Union Jack is in the upper left corner of the flag. It is home to a number of important plant and animal species, including seals, penguins, and a variety of birds. The island is also home to the highest mountain in Australian territory, Mawson Peak

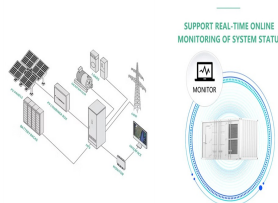


During its nine years of occupation, ninety-one expeditioners wintered on Heard Island. The station initially comprised 18 buildings, separated from each other due to fear of fire. of Heard Island may be found on the National Heritage List and the archived Register of the National Estate listing for Heard Island and McDonald Islands. Share

# STORAGE POWER STATION HEARD AND MCDONALD ISLANDS



Human activities at Heard Island and McDonald Islands (HIMI) have a relatively short but diverse history. Home > About Antarctica > History > History of Australian Antarctic stations > History of Heard Island and McDonald Islands. ???



Some wetland areas have been recorded on McDonald Island but, due to substantial volcanic activity since the last landing was made there in 1980, their present extent is unknown. Conservation significance. The Heard Island and McDonald Islands (HIMI) wetland is listed on the Directory of Important Wetlands in Australia. An analysis found that



Heard Island and McDonald Islands Marine Reserve Management Plan . 2014-2024. ISBN: 978-1876934-255. Many of the station's 35 buildings were constructed from materials left over from World War II. In the years that followed, ANARE conducted extensive botanical, geological,



The subantarctic island group of Heard Island and McDonald Islands (HIMI) is located in the southwest Indian Ocean at about 53°S, 73°30"E. The islands are around 4,100 kilometres southwest of Perth, Western Australia, 4,700 kilometres southeast of Africa and 1,000 kilometres north of Antarctica.



The Heard & McDonald Islands site in Australia was inscribed on the World Heritage List in 1997. As the only volcanically active sub-Antarctic islands, Heard and McDonald provide the ???

# STORAGE POWER STATION HEARD AND MCDONALD ISLANDS



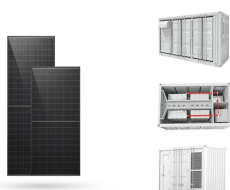
AADC staff can assist the Australian Antarctic Program in preparing for field campaigns to the Heard Island and McDonald Island region through the production of maps, sourcing of new satellite imagery and with the curation and storage/access of remote sensing imagery collected during these campaigns. Station Code: Location: Datum: Latitude



HEARD ISLAND AND MCDONALD ISLANDS by Ewan Mcivor (with two text-figures) Mcivor, E. 2007 (23:xi): Heard Island and McDonald Islands. Papers and Proceedings of the Royal Society of Tasmania 141(1): 7-10. to Heard Island since the Australian ANARE station was closed in 1955, and occasional visits have also been made by other nations. There are



Heard Island and McDonald Islands (HIMI) are a remote subantarctic island group located about 4,000 km south-west of Western Australia and approximately 1,700 km from the Antarctic continent. The HIMI exclusive ???



the shore parties at both McDonald Island and Heard Island, as well as radios and a 16 mm Bolex camera. Details of the project are in Project Instruction NMP/80-015 ?- at Annex C to the report. ???



Big Ben has erupted several times over the past two decades. McDonald Island lies 43.5 kilometres due west of Heard Island, and is the major island in the McDonald Islands group. It is a mere 186 metres high and it too has an active volcano. The McDonald Islands are so volcanically active they have doubled in area since 1980.

# STORAGE POWER STATION HEARD AND MCDONALD ISLANDS



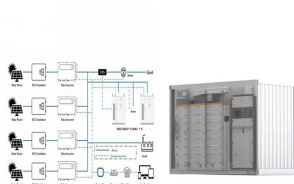
The four Wartsila 32LG engines will deliver a total output of 36 MW, while the energy storage system will add further 9 MW for up to two-hours. The Wartsila plant will provide much needed additional baseload capacity to the Island's electricity supply.



In the heart of the Southern Ocean lies a haven for wildlife: Heard Island and McDonald Islands (known as HIMI) - home to some of the most iconic and ecologically significant penguin species on the planet. These magnificent birds are a true testament to the power of nature's resilience, but they require strong protection measures to ensure



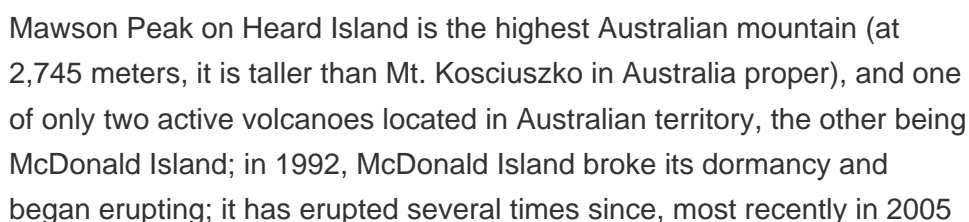
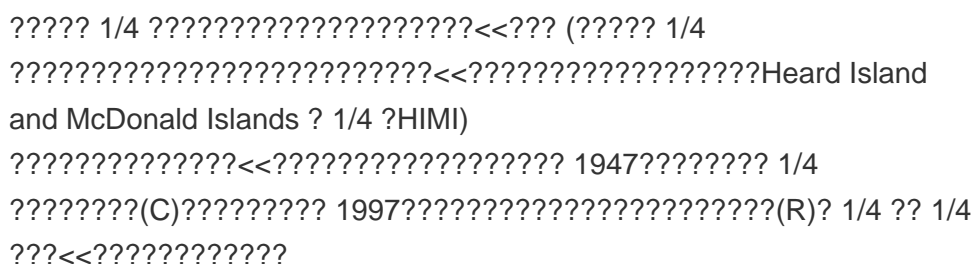
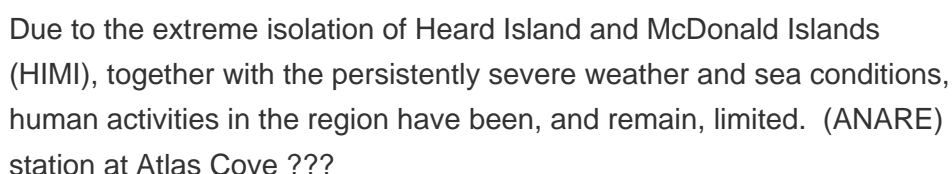
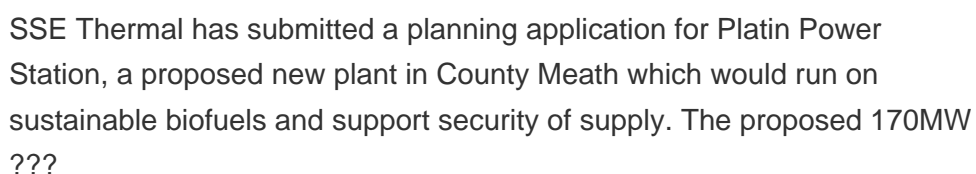
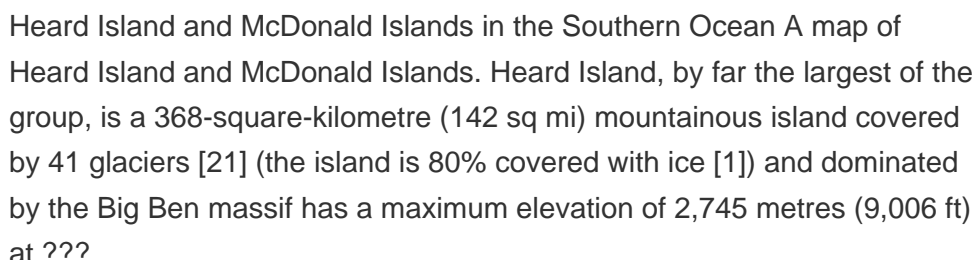
The Australian Government is proposing to expand the Heard and McDonald Island (HIMI) Marine Reserve by over 300,000 km<sup>2</sup> to around 379,000 km<sup>2</sup>. The expanded reserve would cover nearly 90 per cent of the Exclusive Economic Zone around the islands and bring the proportion of Australian waters protected through marine reserves to 51 per cent.



The World Heritage List is a register of properties worldwide that exhibit outstanding universal natural and/or cultural values, and was established under the Convention Concerning the World Cultural and Natural Heritage (the World Heritage Convention).. The Environment Protection and Biodiversity Conservation Act 1999 (EPBC Act) is Australia's main instrument for implementing ???



McDonald Island is much smaller (2.5 km<sup>2</sup>), about 100 000 years old and totally ice-free, and is predominantly composed of phonolitic rocks. 9, 10 During the campaign, signs of volcanic activity





# STORAGE POWER STATION HEARD AND MCDONALD ISLANDS



Management plans also explain what the objectives are for managing the area, and what the managers will do to help meet those objectives.. It is a requirement of the Environment Protection and Biodiversity Conservation Act 1999 (the EPBC Act), under which the Heard Island and McDonald Islands (HIMI) Marine Reserve was declared, that a management plan be prepared ???



OverviewWildlifeHistoryGeographyAdministration and economySee alsoFurther readingExternal links



Das Heard Island and McDonald Islands Marine Reserve ist ein 71.200 km<sup>2</sup> grosses Meeresschutzgebiet im am weitesten von Australien entfernten Aussengebiet.Es liegt im Indischen Ozean, 1.700 km n<sup>ordlich</sup> der australischen Mawson-Station in der Antarktis und etwa 4.100 km s<sup>udwestlich</sup> von Western Australia und ist etwa ebenso weit von S<sup>udafrika</sup> entfernt. [1]



Public consultation paper 1 Purpose of this document The Proposal to expand Heard Island and McDonald Islands Marine Reserve ??? Public consultation paper ("proclamation proposal") has been prepared to support public consultation on the proposed design of an expanded Heard Island and McDonald Islands (HIMI) Marine Reserve.



The Territory of Heard Island and McDonald Islands (HIMI) is an Australian external territory comprising a volcanic group of mostly barren Antarctic islands, about two-thirds of the way from Madagascar to Antarctica.The group's overall size is 372 km<sup>2</sup> (144 sq mi) in area and it has 101.9 km (63 mi) of coastline. Discovered in the mid-19th century, the islands lie on ???

# STORAGE POWER STATION HEARD AND MCDONALD ISLANDS



In the heart of the Southern Ocean lies a haven for wildlife: Heard Island and McDonald Islands (known as HIMI). HIMI are a sub-Antarctic island group and Australian external territory located in the Southern Ocean, around 4,000km ???

## Commercial and Industrial ESS

Air Cooling / Liquid Cooling

- Budget-Friendly Solution
- Seamless Energy Integration
- Modular Design for Flexible Expansion



Early scientific visits. The first recorded scientific visit to Heard Island was by the Challenger in 1874, when a brief landing was made at Atlas Cove and a few scientific samples were collected. Poor weather limited the visit to 3 hours. Later the same year, the Arcona brought a German expedition to Heard Island, looking for suitable sites for observing a transit of Venus.