

# SUBSTATION BATTERY BANK KAZAKHSTAN



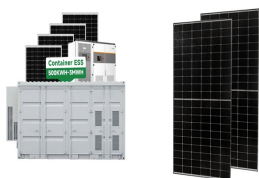
Even if the sp.gr. is normal, equilibrising charge should be given to the battery once in a month i.e. Boost charge battery for 2-3 hours at current 10% of AH capacity. After service of 5 years the entire cells of the battery should be discharged completely and recharged to ascertain battery life.



Typically when I have replaced batteries at a substation a temporary battery bank is brought in and connected so as to maintain the DC System. After that, it is the standard safety procedures for working around batteries, plus other items such as handling the individual battery jars. Depending on the weight a lift may be necessary.



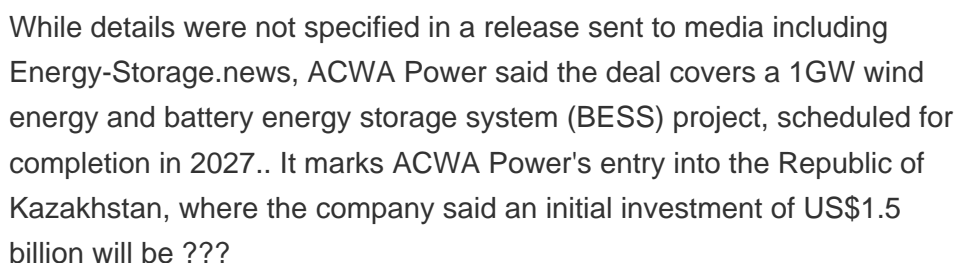
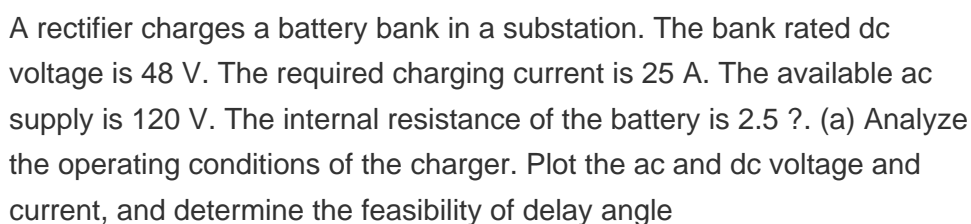
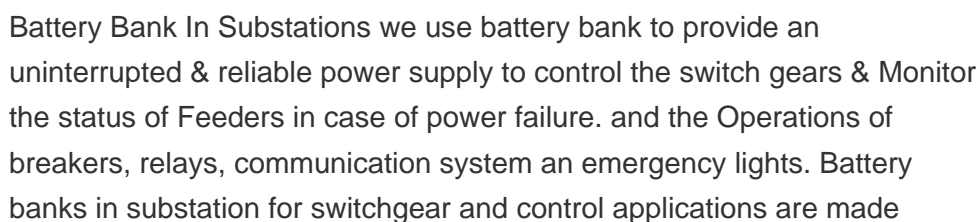
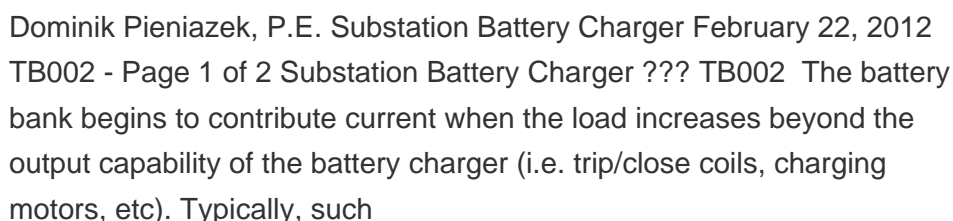
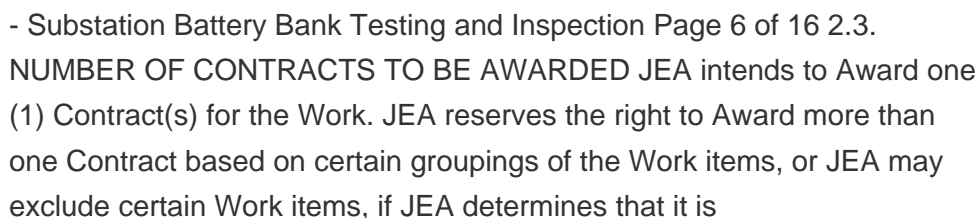
Substation Battery Charger Pdf . Substation battery chargers are one of the most important pieces of equipment in a substation. They provide the power to charge batteries that keep the substation operating during a power outage. Without a working charger, a substation can quickly become inoperable. There are two types of substation battery



2. Battery Unit. Mandatory Condition: The battery set should have been properly charged as per the commissioning instructions of the battery manufacturer for the duration specified. Visual Inspection: Cleanliness of battery is checked and the electrolyte level checked as specified on the individual cells. The tightness of cell connections on individual terminals ???



Substation battery banks (SBB) in electrical substations participate in black start recovery processes and provide essential back-up power supply for protection, control, telecommunications, and lighting. With stringent limitations on space and increasing requirements for safety and reliability, potential battery sizing optimisation



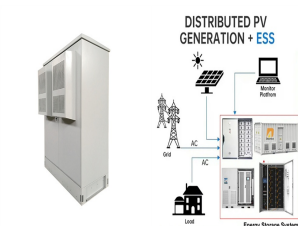
# SUBSTATION BATTERY BANK KAZAKHSTAN



Powertron pip1-11050x2bcd substation dual fcbc battery charge Three phase industrial battery charger; Marine battery charger; Substation battery charger, operating temperature: 0 to 55 d Industrial flot cum boost battery charger, input voltage: 41 Power soft psc0987 substation battery charger, 55, 110v



Study with Quizlet and memorize flashcards containing terms like When a substation DC system charger is supplying a trickle charge to maintain a predetermined voltage level to a bank of batteries, it is known as a ? charge., Common nominal voltages for a bank of substation batteries are 120 volts DC, 240 volts DC, and ? ., The substation battery charger is connected to the ???



each substation they are shown the battery bank and the maintenance, safety precautions, and protection of the battery bank is discussed. An example battery bank from a substation tour is shown in Figure 1. To insure proper operation, substation batteries need to be inspected and maintained. Items to be inspected monthly include:



Figure 2-1 Typical Substation Battery System (Left: 25-Ampere Battery Charger; Middle: DC Distribution Panel; Right: 125-Volt, 150-Ah Flooded Lead-Acid Battery Bank)..2-2 Figure 2-2 Large 500-kV Substation Equipment Rack That Includes Conventional Discrete Electromechanical Relays in the First Section on the Left (Individual



Battery and battery charger systems must be designed for the purpose intended and to meet the requirements of all applicable standards. The primary role of the substation battery system is to provide a source of energy that is independent of the primary ac supply, so that in the event of the loss of the primary supply the

# SUBSTATION BATTERY BANK KAZAKHSTAN



Batteries play a crucial role in the smooth and efficient operation of substations, ensuring that power systems remain stable and reliable. These batteries work in conjunction with battery chargers to provide essential backup ???



The most vital part of a substation is the protection aspect. Protection relies heavily on the backup systems ability to deliver when required. For this reason, it is necessary to ensure healthy battery banks in all substations. This will ???



According to the DBK's press service, funds of up to 32 billion tenge (US\$61 million) will be allocated for the construction of the 500 kilovolt (kV) Karabatan-Ulke transmission line (along the Atyrau-Aktobe highway) and the 500 kV Karabatan substation, as well as for the expansion of switchgear at the Karabatan (220 kV) and Ulke (500 kV) substations.



Problem 11.9 A rectifier charges a battery bank in a substation. The bank rated dc voltage is 48 V. The required charging current is 25 A. The available ac supply is 120 V. The internal resistance of the battery is 2.5  $\Omega$ . (C). (a) Analyze the operating conditions of the charger.



Battery banks are crucial for the proper operation of an electrical power substation. When station service power is lost, the battery bank must power 1) the tripping and closing of circuit breakers, 2) all of the protective relays, 3) all indicators and annunciators, and 4) the remaining auxiliary equipment. AU - Glenn T. Wrate P.E. CY



Batteries are among the least expensive pieces of equipment in a substation, and they are the heart that keeps the protection and control system running. Despite this, they are often not maintained properly. which is the moment in which the cell will become a load for the bank.

# SUBSTATION BATTERY BANK KAZAKHSTAN

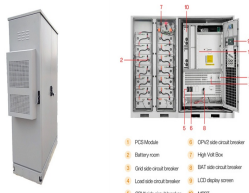
---

Figure 8: Battery performance test result . If a cell or cells

# SUBSTATION BATTERY BANK KAZAKHSTAN



5.1 A protection plan is not required to complete replacement of a battery bank in a substation. However in some generation plants, turning off the battery charger DC output breaker may cause the plant lockout relay to trip. Therefore, it is necessary to contact the Power System Support Group to determine if a Protection Plan will be required



This document discusses the components and typical configurations of DC auxiliary power supply systems used in electrical substations. It describes how these systems usually operate at 110V or 220V, and use batteries, chargers, and distribution switchboards. For critical protection, control and interlocking circuits, duplicate battery and charger systems may be installed for reliability. ???



The substation battery banks are sized and purchased by the substation engineering activity. Battery banks are purchased direct from pre-approved battery bank manufacturers. Battery banks are purchased for individual substation projects and for replacement of deteriorated existing banks throughout the system as needed. Lead acid battery banks



Fully customizable 48 and 125 VDC mobile DC power solution outfitted with batteries and accessories to suit your application. A perfect solution for substation managers and plant engineers to help you with NERC compliance testing. Product Features & Customer Benefits. Fully Customizable; Multiple Voltages and A-Hr Capacities; All Battery Types



What are the common VDC terminal voltages for a bank of substation batteries. 48, 120, 240. A substation charger should replace ? of the complete storage capacity of the substation battery bank in no more than 8 hours. 95%. About us. About Quizlet; How Quizlet works; Careers; Advertise with us; Get the app; For students. Flashcards; Test; Learn