

SWITCH TRIPS WHEN STORING ENERGY



Each circuit - or switch - in the circuit breaker is rated for a allocated amount of current. A 15 Amp switch protects a 15 Amp flow of power, while a 20 Amp switch protects a 20 Amp flow of power. When the flow of ???



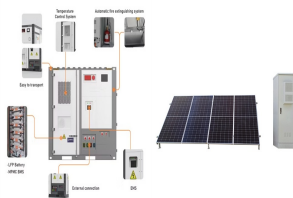
The battery modules are the heart of the system, storing energy and dispatching it when needed. A battery is made up of lithium cells, wired together to create a module. Deviations below 60 Hz can lead to protective generator trips that ???



When the heating element is faulty, the oven trips when you plug it in or start a program. To solve the issue, please follow these instructions: Leave the oven completely unplugged or turn it off ???



Some main switches will trip but this one is designed to turn all power supply off to the consumer unit in which it is installed. A Main Switch will only normally trip if it is also an RCD. This noise is when the switch is ???



A working safety switch should trip before the damaged electrical wiring can start a fire, but it doesn't hurt to be on notice for the tell-tale signs. Flickering lights, buzzing sounds, warm to touch spots and burning smells are ???



Each circuit - or switch - in the circuit breaker is rated for a allocated amount of current. A 15 Amp switch protects a 15 Amp flow of power, while a 20 Amp switch protects a 20 Amp flow of power. When the flow of ???

SWITCH TRIPS WHEN STORING ENERGY



If your safety switch trips, it's doing its job & protecting you from electrical hazards. We explain how safety switches work, why they're important & what causes safety switch tripping.



If you're storing your RV for an extended period, particularly in very cold weather, consider fully disconnecting the house batteries and storing them in a warmer place for the winter. This precaution helps prevent battery drain and damage, ???



Storing energy with molecular photoisomers . Artificially, solar energy can be stored as chemical energy, e.g., via electrochemical water splitting for hydrogen production. At the current stage, ???



Reasons Light Switch Trips Breaker. 1. Light Fixture Fault If a light fixture is faulty, a breaker can become overloaded. The wires in an old light fixture can fall apart and cause a short or ground out. Turn off power before checking ???



If the safety switch still fails to reset avoid touching it and any electrical systems and call a licenced electrician as soon as possible. Once the switch is reset, plug your appliances back in one at a time. Usually, the faulty appliance will cause ???



Causes of a Power Trip. Essentially, a power trip occurs when the electrical system in your home is compromised in some way. The trip is a safety mechanism, meaning your circuit breakers will "trip the switch" and ???

SWITCH TRIPS WHEN STORING ENERGY



Trip switches are very sensitive so as soon as there's an issue, they'll kick into action. If your box isn't labelled or you can't narrow down the problem, the only solution is to unplug every device in your home, reset the ???



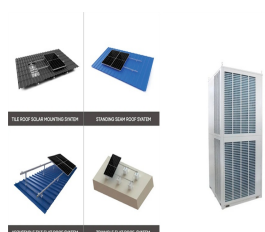
As the plunger continues its forward motion, it eventually strikes the latch, causing it to open, as illustrated in Case "c" bsequently, the pole of the circuit breaker begins to open, as depicted in Case "d", eventually ???



Resetting an MCB is straightforward ??? locate the tripped MCB in your consumer unit and toggle its switch back to the "ON" position. If the fault has been resolved, this should restore power. Troubleshooting Persistent Tripping. ???



A January 2023 snapshot of Germany's energy production, broken down by energy source, illustrates a Dunkelflaute ??? a long period without much solar and wind energy (shown here in yellow and green, respectively). ???



Trip switches are basically fuses; when too much current (AKA load) passes through a given circuit the switch (which are rated e.g. 13 AMP) is "tripped" and the circuit is broken. Trip coils are the release components in ???



Setting a trip switch. Open the cover on the consumer unit to see which switches have tripped to the OFF position. Put them back to the ON position. If tripping occurs again, it is probably being caused by a faulty ???