

TBILISI FLYWHEEL ENERGY STORAGE PRODUCTION PLANT

114KWh ESS



Are flywheel energy storage systems feasible? Flywheel energy storage systems are feasible for short-duration applications, which are crucial for the reliability of an electrical grid with large renewable energy penetration. Flywheel energy storage system use is increasing, which has encouraged research in design improvement, performance optimization, and cost analysis.

114KWh ESS



Are flywheel-based hybrid energy storage systems based on compressed air energy storage? While many papers compare different ESS technologies, only a few research, studies design and control flywheel-based hybrid energy storage systems. Recently, Zhang et al. present a hybrid energy storage system based on compressed air energy storage and FESS.

114KWh ESS



Can a flywheel energy storage system be used in a rotating system? The application of flywheel energy storage systems in a rotating system comes with several challenges. As explained earlier, the rotor for such a flywheel should be built from a material with high specific strength in order to attain excellent specific energy.

114KWh ESS



Can flywheel technology improve the storage capacity of a power distribution system? A dynamic model of an FESS was presented using flywheel technology to improve the storage capacity of the active power distribution system. To effectively manage the energy stored in a small-capacity FESS, a monitoring unit and short-term advanced wind speed prediction were used. 3.2. High-Quality Uninterruptible Power Supply

114KWh ESS



What are the components of a flywheel energy storage system? The main components of a flywheel energy storage system are a rotor, an electrical motor/generator, bearings, a PCS (bi-directional converter), a vacuum pump, and a vacuum chamber. During charging, the rotor is accelerated to a high speed using the electrical motor.

TBILISI FLYWHEEL ENERGY STORAGE PRODUCTION PLANT

114KWh ESS



What is a flywheel/kinetic energy storage system (fess)? Thanks to the unique advantages such as long life cycles, high power density, minimal environmental impact, and high power quality such as fast response and voltage stability, the flywheel/kinetic energy storage system (FESS) is gaining attention recently.

114KWh ESS



Beacon BP- 400 Flywheel 8 ~7" tall, 3" in diameter 2,500 pound rotor mass Spins up to 15,500 rpm Max power rating 100 kW, 25 KWh charge and discharge Lifetime throughput is over 4,375 MWh Motor/Generator Capable of charging or discharging at full rated power without restriction Beacon flywheel technology is protected by over 60 patents



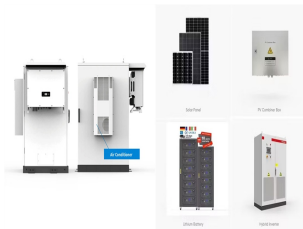
Energy Storage Systems (ESS) can be used to address the variability of renewable energy generation. In this thesis, three types of ESS will be investigated: Pumped Storage Hydro (PSH), Battery Energy Storage System (BESS), and Flywheel Energy Storage System (FESS). These, and other types of energy storage systems, are broken down by their

Energy storage systems (ESSs) are the technologies that have driven our society to an extent where the management of the electrical network is easily feasible. The balance in supply ???

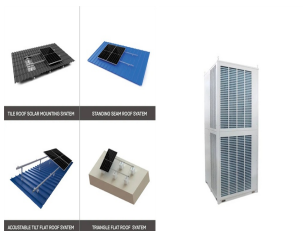


This review presents a detailed summary of the latest technologies used in flywheel energy storage systems (FESS). This paper covers the types of technologies and systems employed within FESS, the range of materials used in the production of FESS, and the reasons for the use of these materials. Furthermore, this paper provides an overview of the ???

TBILISI FLYWHEEL ENERGY STORAGE PRODUCTION PLANT



U.S. market ???Freedomia projects advanced and renewable micropower demand in the U.S. will total \$19.3 billion in 2015 based on annual gains of 14.7 percent from 2010 Global market ???Pike Research forecasts that advanced energy storage technologies will surpass \$3.2 billion global revenue by 2021



production of free energy. such as flywheel energy storage [7], new energy vehicles [8,9], household appliances [10,11], electric bicycles [12,13] and other situations [14,15], it has more



Kinetic/Flywheel energy storage systems (FESS) have re-emerged as a vital technology in many areas such as smart grid, renewable energy, electric vehicle, and high-power applications.



When the renewable plant production is not sufficient to satisfy the electrical load, CASE 1 occurs and additional conditions (battery state of charge, flywheel rotational speed, absence of PV production) lead to the identification of further sub-cases. Review of Flywheel Energy Storage Systems structures and applications in power systems



These Advanced Flywheel Energy Storage System (FESS) startups are revolutionizing energy storage with new technologies. November 4, 2024 +1-202-455-5058 sales@greyb . while effective for energy storage, degrade quickly under the high power demands required for rapid charging. Their production involves costly and environmentally ???

TBILISI FLYWHEEL ENERGY STORAGE PRODUCTION PLANT



Energy storage systems are among the significant features of upcoming smart grids [[123], [124], [125]]. Energy storage systems exist in a variety of types with varying properties, such as the type of storage utilized, fast response, power density, energy density, lifespan, and reliability [126, 127]. This study's main objective is to analyze



Flywheel energy storage systems are feasible for short-duration applications, which are crucial for the reliability of an electrical grid with large renewable energy penetration. Flywheel energy storage system use is increasing, which has encouraged research in design improvement, performance optimization, and cost analysis.



Flywheel Energy Storage Systems (FESS) work by storing energy in the form of kinetic energy within a rotating mass, known as a flywheel. Here's the working principle explained in simple way, Energy Storage: The system features a flywheel made from a carbon fiber composite, which is both durable and capable of storing a lot of energy.



This concise treatise on electric flywheel energy storage describes the fundamentals underpinning the technology and system elements. Steel and composite rotors are compared, including geometric effects and not just specific strength. A simple method of costing is described based on separating out power and energy showing potential for low power cost ???



Based on global electrical production, we believe that the worldwide frequency regulation market is several times this amount. The company found a buyer in Rockland Capital, who acquired Beacon Power's 20MW flywheel energy storage plant and the Company's other assets for a paltry \$31MM (compared to several hundred million of development

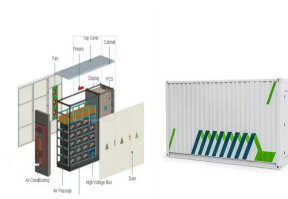
TBILISI FLYWHEEL ENERGY STORAGE PRODUCTION PLANT



Flywheel energy storage consists in storing kinetic energy via the rotation of a heavy object. Find out how it works. Flywheel energy storage¹ consists in storing kinetic energy via the rotation of a heavy wheel or cylinder, which is usually set in motion by an electric motor, then recovering this energy by using the motor in reverse as a power



Thanks to the unique advantages such as long life cycles, high power density and quality, and minimal environmental impact, the flywheel/kinetic energy storage system (FESS) ???



Flywheel energy storage systems for autonomous energy systems with which are driven only by 100% usage of renewable energy. Nowadays production of high- regulatory plants based on Smart



Recovering compression waste heat using latent thermal energy storage (LTES) is a promising method to enhance the round-trip efficiency of compressed air energy storage (CAES) systems.



Flywheel-based Frequency Regulation Power Plant A Study for the DOE Energy Storage Systems Program Robert Rounds and Georgianne H. Peek Prepared by Sandia National Laboratories Albuquerque, New Mexico 87185 and Livermore, California 94550 Sandia is a multiprogram laboratory operated by Sandia Corporation,

TBILISI FLYWHEEL ENERGY STORAGE PRODUCTION PLANT



Download scientific diagram | Beacon Power's flywheel energy storage plant in Stephentown, New York. Source: Beacon Power 4 In Chili several Li-ion battery solutions have been installed since 2009



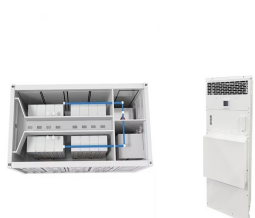
Increased renewable energy production and storage is a key pillar of net-zero emission. The expected growth in the exploitation of offshore renewable energy sources, e.g., wind, provides an



Hazle designed, built, commissioned, and operates a utility-scale 20 MW flywheel energy storage plant in Hazle Township, Pennsylvania (the Hazle Facility) using flywheel technology developed by its affiliate, Beacon Power, LLC (Beacon Power). Evaluation of Hydrogen Production Feasibility for a Light Water Reactor in the Midwest.



In (), the parameters (K_{DEG}) and (T_{DEG}) represent gain and time constants of DEG system, respectively. Flywheel energy storage system (FESS) FESS serves as a quick-reaction (ESS) and a



Flywheel power storage systems in production as of 2001 [update] had storage capacities comparable to batteries and faster discharge rates. [18] flywheel energy storage plant in Stephentown, New York in 2011 [48] using 200 flywheels [49] and a similar 20 MW system at Hazle Township, Pennsylvania in 2014.