

THE BEST DISTANCE FOR PHOTOVOLTAIC PANEL INSTALLATION



Bifacial solar panels represent a significant advancement in photovoltaic technology, offering the potential to capture sunlight from both their front and rear surfaces. This innovative design can increase energy yield by 5-30% compared to traditional monofacial panels, making them an attractive option for many solar installations. However, to maximize their ???



To get maximum solar power, we must adjust panels at the azimuth angle near solar noon. You can use SolarSena's azimuth angle calculator to find the azimuth angle of your location. For example, if your ???



For a fixed solar installation, it is preferred that the PV panels are installed with a centralised tilt angle representing the vernal equinox, or the autumnal equinox, and in our example data above this would be about 38 degrees (38 o).. However, this tilt orientation is not as critical with regards to the solar panels orientation as even at a tilt angle of nearly 45 degrees (45 o) with



Many solar panel companies make small solar panels designed specifically for small roofs. You can also opt for high-efficiency solar panels that have conversion rates as high as 23% (compared to the industry average of 18%). Average Solar Panel Dimensions UK . Here is the average solar panel dimensions in the UK:



Can I build my own Solar Panel System UK? - DIY Solar; Getting Solar Panel Quotes in the UK 2024; How much Space do I need for Solar Panels? UK Guide 2024; The Smart Export Guarantee (SEG) UK; Solar Panels for New Builds: A UK Guide for 2024; Solar Panels for Schools and Colleges in the UK; How Much Electricity Does a Solar Panel Produce, UK?

THE BEST DISTANCE FOR PHOTOVOLTAIC PANEL INSTALLATION



Are you considering installing solar panels on your property in Ireland? With the government's push towards renewable energy, it's no surprise that more and more people are turning to solar power. But before you jump in, it's important to understand the regulations and standards surrounding solar panel installation in Ireland.???



Discover which solar panel sizes and dimensions are the most common in the UK, as well as which size is the best for your home. 0330 818 7480. Become a Partner. Menu. Solar Panels. Heat Pumps. Boilers. Windows. Doors



Type of Wire Used for Solar Panels? (Best + Installation) September 8, 2023 August 22, will consider how far the solar panels are from the charge controller and how much the voltage drop will be over such a distance. If you use Romex in a solar panel wiring setup, your wires will probably melt and catch on fire after being exposed to



$\omega = (1/4 \text{ rad}) / (\text{sec} \text{ with respect to the spacecraft})$ if ω is the absolute angular velocity of the solar panels determine ω is the absolute angular velocity of the solar panels determine ω . also find the acceleration of point a when $\omega = 30^\circ$ Ans. $\omega = 1/4 \text{ rad/sec}$ $A_a = 0.313i - 2.43j - 0.1083k \text{ ft/sec}^2$ $\omega = (1/4 \text{ rad}) / (\text{sec} \text{ with respect to the spacecraft})$ if ω is the absolute ω ??



Solar power generation has an important role to play in the energy mix especially as the world makes a transition away from fossil fuels. Getting the most out of a solar photovoltaic (PV) plant will deliver the highest energy output from the smallest number of solar panels, making the best use of available land or rooftop space and ensuring the highest return ???

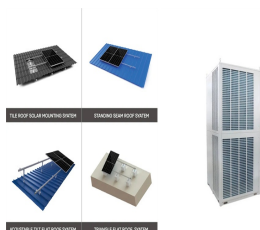
THE BEST DISTANCE FOR PHOTOVOLTAIC PANEL INSTALLATION



Panels with a minimum distance between the panel and roof edge of $2S$ where "S" is the gap between the underside of the panel and the roof surface. So if you have a 50mm high gap between panel and roof = 100mm ???



As solar PV panels work best if they stay cool, some installers will counter-batten before installing roof-integrated solar PV as this The installation of solar PV panels on the roof on a house needs to comply with Building Regulations including Part A on Structural Safety. If the loading to the roof is increased by 15 per cent or more



Here at Solar Panel Prices we are committed to helping you save money on your new solar panel or solar thermal system. We only work with pre-screened MCS certified installers nationwide, to provide no hassle, no fee, ???



How to install solar panels wiring . Solar panel wiring installation is not overly complicated if you understand basic electricity procedures. First, there is a positive wire and a grounding wire. Most solar components have a ???



Furthermore, the decision on the most appropriate type of the solar panel mounting system will also affect the final cost of the project. The installation of the roof mounting may even imply modifications to your house ???

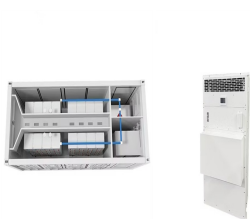
THE BEST DISTANCE FOR PHOTOVOLTAIC PANEL INSTALLATION



The ability of bifacial panels to generate energy from both sides presents a promising development in optimizing solar panel efficiency and overall energy output for PV installations. This article examines the pros and cons of the technology and is a bifacial solar panel installation guide.



Comparison of Panel Types. When choosing a photovoltaic panel, it is essential to consider the efficiency, cost, and available space for installation. Monocrystalline panels are the most efficient but also the most expensive. ???



2 General good practice during installation 3 3 Photovoltaic systems 7 3.1 Overview of PV in the UK 7 3.2 Installation 7 4 Solar thermal systems 17 The purpose of this guide is to give best practice advice on wind- and weather-resistant installation of PV, solar thermal and microwind turbines on residential buildings.



1. What type of roof is best for solar panels? Metal roofing is a well-known choice for solar panel installation owing to its durability, high energy proficiency, life expectancy, and non-combustibility. 2. Is it safe to install solar panels on roofs?

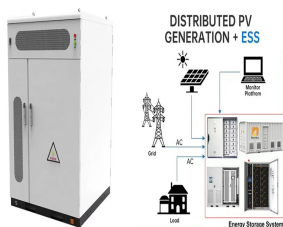


these should help identify. Next, it discusses aspects of solar panel cleaning and site security. The final section provides information on warranty issues. Note that the basis for all solar panel operations and maintenance should be consultation with professional solar companies for advice, and to consider the specific needs for each

THE BEST DISTANCE FOR PHOTOVOLTAIC PANEL INSTALLATION



Ensuring sufficient distance between module rows is crucial to prevent shading. A general rule of thumb is to calculate row spacing by multiplying the height of the module edge by three. Discover the ideal solar panel sizes for your installation. Learn about common dimensions, types of panels, and space requirements for residential and



Solar retailers market and sell solar PV systems. This may include advice on the system that best meets the customer needs. Solar retailers may allocate installation work "in-house" or subcontract the work to contractors. If the sale of solar panels includes installation, the ???



The success of a solar panel installation hinges on a harmonious fusion of solar panel angle and orientation, fine-tuned in response to local conditions. By factoring in geographical location and climatic nuances, solar panel systems can be in a position to harness the abundant solar resources prevalent throughout India. Solar Panel Direction



If you're planning to install a solar panel system in your home, you must register it with your Distribution Network Operator (DNO). The DNO is the company responsible for bringing electricity to your home. The ideal place to install solar panels is on a sloping roof, as the panels work best when angled towards the sun. But if you can't



We analysed 643 of the UK's 4,000 MCS-registered solar panel installers; We rated the 12 best installers against seven key criteria; Criteria included customer service, warranties, accreditation and experience; Read our guide before choosing the best solar panel installer for your home

THE BEST DISTANCE FOR PHOTOVOLTAIC PANEL INSTALLATION



Relevant Laws and Regulations for Solar Panel Boundary Distances. When installing solar panel systems, it is crucial not only to consider the spacing between panels and installation angles but also to comply with local government and regulatory requirements concerning the distance between solar panels and property boundaries. 1. Italy



The Best Wire For Solar Panels. Invest in the best quality 10 AWG Copper photovoltaic cabling for your installation to ensure maximum performance from your solar system. The cost of a solar system has significantly reduced and now yields the most cost-efficient power generation available.



If 6 PV panels are erected on an independent supporting structure and the weight of each PV panel is around 26kg. The weight of the system supported by the structure will be 156kg (i.e. 26kg x 6 PV panels).

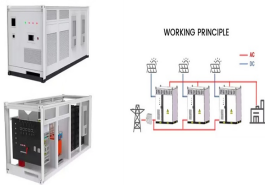


Solar panel installation. What you need to know to work safely . HEALTH AND SAFETY . GS001 04/19 2 . minimum distance is 1 m. If there is any chance of coming closer than a metre to the wires and the supply cannot be turned of f, the best solution is to get the electricity supplier to install temporary sleeving. For higher voltage



The best answer is shorter is better in terms of distance. Solar Battery storage systems should be within 20-30 feet, and you would mount the charge controller within a yard or meter of the batteries. The distance between your solar panel components ??? the panels, batteries, and controller ??? is critical. If the space is too large, power

THE BEST DISTANCE FOR PHOTOVOLTAIC PANEL INSTALLATION



The best angle to install solar panels in the UK is around 40 degrees. This will ensure that the solar panels get the most possible daylight throughout the year, so they can produce lots of electricity.