

THE BEST INSTALLATION DIRECTION OF PHOTOVOLTAIC PANELS



The success of a solar panel installation hinges on a harmonious fusion of solar panel angle and orientation, fine-tuned in response to local conditions. By factoring in geographical location and climatic nuances, ???



The solar panel's angle is rarely a limiting factor, and most roof tilts work fine. The wrong angle in a correct solar orientation might produce more energy than the correct one in a wrong orientation. 2. What direction should ???



Calculator Notes. This calculator is based on a pair of mathematical formulas published in a 2018 research paper on optimal PV tilt angles; According to an analysis I conducted, the tilt angles derived from these formulas generate on average 0.71% more power over the course of a year than setting your tilt angle equal to your latitude; What's the Best ???



The angle of a solar panel describes its tilt, while the orientation is the cardinal direction the panel is facing. Is east or west better for solar panels? For most homeowners in the Northern Hemisphere, panels need to face toward the geographic south, but not necessarily toward the east or west.



The article aims to take you through the essential aspects of solar panel angle and direction, which will help them get the best out of their solar panel installation. Whether contemplating an on-grid solar system or working with the top solar company in Maharashtra, you need to know the ideal setup.

THE BEST INSTALLATION DIRECTION OF PHOTOVOLTAIC PANELS



Optimal Direction: In the Northern Hemisphere, solar panels should face true south; in the Southern Hemisphere, true north.; Tilt Adjustments: Tilt angles should vary with seasons: $+15^\circ$ in winter, -15° in summer, and adjust according to latitude for spring and fall.; Solar Calculators: Use tools like NOAA Solar Calculator and Google Project Sunroof to find precise ???



To get maximum solar power, we must adjust panels at the azimuth angle near solar noon. You can use SolarSena's azimuth angle calculator to find the azimuth angle of your location. For example, if your azimuth angle is 160° , as per the previous table, the south direction is the best direction for you. Overall best azimuth angle for solar panels



South-facing panels give you the most bang for your buck because the sun crosses the sky in the south, giving the panels more sunlight. "We tell people that a solar panel costs the same amount regardless of what orientation it gets installed in," says Aaron Nitzkin, executive vice president of solar at Citadel Roofing and Solar in California (another ???

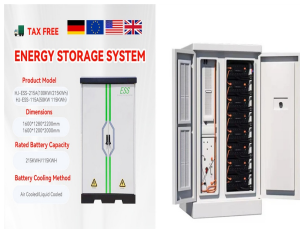


Orientation: A south-facing roof is generally considered ideal for maximizing solar energy production. East and west-facing roofs can also be suitable but may have slightly reduced efficiency. Tilt: A solar panel tilt angle allows for optimal sun exposure. The ideal tilt angle is often close to the latitude of the installation location, but adjustments can be made based on ???

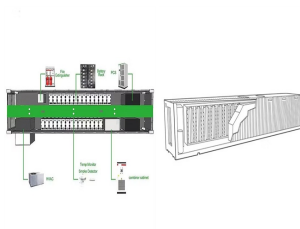


For that reason the ideal angle is never fixed. To get the most sun reaching the panel throughout the day, you need to determine what direction the panels should face and calculate an optimal tilt angle. This will depend on: ???

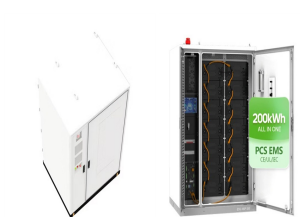
THE BEST INSTALLATION DIRECTION OF PHOTOVOLTAIC PANELS



"Solar panel direction" refers to the orientation of solar panels specifically the cardinal direction at which they are positioned to face the sun. Best Solar Panel Installers. Find out more about the top 10 solar panel installers in the UK. If your roof doesn't face the ideal direction, you can still install solar panels but you may



Whether you are having a domestic or a commercial solar panel installation, it is important to understand the factors involved in finding the ideal location for your panels to get the most out of your system. The direction and position of your panels can have a remarkably large effect on their efficiency, so it's worth spending some time to get this right.



The best all-year-round angle for PV (photovoltaic) solar panels in the UK is 35-40 degrees. The best angle for each region within the UK will vary slightly within this. For seasonal changes, the best angle for summertime is 20 degrees and 50 degrees in winter.

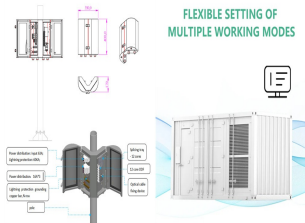


The optimum place to install solar panels usually depends on the position, inclination and its orientation towards the sun. Solar panel direction: best direction for my panels? The most optimum direction to face your solar panels is somewhere between south and west. It is at this location that your panels will receive the maximum sunlight



To maximize efficiency and reduce energy costs, you'll want to find the best solar panel tilt angle for your solar power system. When the sun is lower in the sky, solar panels need a greater tilt angle to receive direct sunlight. When the sun is higher, panels require less tilt.

THE BEST INSTALLATION DIRECTION OF PHOTOVOLTAIC PANELS



Power Loss Table: This table shows how much energy you can expect to get from almost any combination of solar panel direction and angle in the capital cities, compared to the "optimum" orientation. For example, in Brisbane, if your panels are facing West (270°) and are ???



For a fixed solar installation, it is preferred that the PV panels are installed with a centralised tilt angle representing the vernal equinox, or the autumnal equinox, and in our example data above this would be about 38 degrees (38°).. ???



Sun Direction Maps: Essential tools that show the Sun's path across the sky, helping optimize solar panel placement for maximum efficiency. **Reading the Map:** Key elements include azimuth angle (compass direction) and elevation angle (Sun's height). These help determine the best placement and tilt for solar panels. **Seasonal Variations:** Sun paths vary ???



The best direction for a solar panel system. To overcome this issue, you can install panels on a north-facing roof with a mounting system that's pitched against the slope of the roof. We won't beat around the bush ??? this ???



The installation and orientation of solar panels, along with the type of solar panel, determines their yield. Find out more about it. **Residential.** Optimal orientation of solar panels. The best orientation of solar panels is the southern direction. This is explained by the angle of rotation of the sun. If you want to install solar panels

THE BEST INSTALLATION DIRECTION OF PHOTOVOLTAIC PANELS



The best orientation for a solar panel depends on where you are in the world. Solar panels in the UK will always work best when pointed south, as it means they're facing the sun. This is usually known as a zero-degree ???



South-facing solar panels will perform the best for a vast majority of homeowners. If you do not have a south-facing roof ??? don't worry! Your solar panels will still be able to produce energy, just not as much.. In this article, we'll discuss the best solar panel direction to maximize your output, and how having your solar panels facing any other direction can affect your panel's



The specific high efficiency solar panels design, while reasonably determining the solar panel angle, should also be considered comprehensively, so that the square array can reach the best state. 5. How to ???

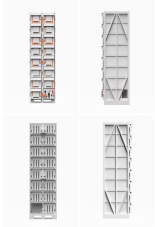


The best direction for a solar panel system. We know how much energy we can potentially get from the sun, so we need to ensure the solar panels are installed in the very best position to mop up every kWh we possibly can.. We learn from a very early age that the sun rises in the east and sets in the west so, in the Northern Hemisphere, that means pointing the ???



Use our solar panel buying advice and see our solar panel brand reviews to help make your decision. What is the best angle and roof direction for solar panels? The table below shows the percentage of the maximum output you will get from a solar PV system, depending on your roof orientation (west, south, east) and tilt angle (source: the Energy Saving Trust).

THE BEST INSTALLATION DIRECTION OF PHOTOVOLTAIC PANELS



Learn all about solar panel angles by zip codes and the best direction and orientation for solar panels. the ideal angle for a solar panel installation is close to or equal to the latitude of



The best angle for solar panels in the UK is between 30° and 40°. To ensure that your solar panels can produce energy optimally, they should be installed on a south-facing part of your roof. Solar panel angle and ???



The best angle for solar panels in the UK is between 30° and 40°.; To ensure that your solar panels can produce energy optimally, they should be installed on a south-facing part of your roof.; Solar panel angle and ???



2MW / 5MWh
Customizable

Your solar panel orientation is an important part of the sizing of photovoltaic and solar thermal systems. Since solar power produced is directly proportional to the orientation of solar panels, the right orientation can not only maximize solar power but also decreases the cost of the project.. The orientation is composed of two parameters: direction and tilt angle.

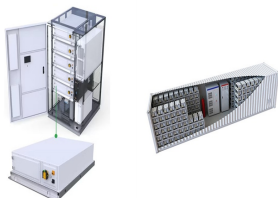


Power Conversion
System

• Single stage three level modulation
• Multi channel input reduction battery
series and parallel connection

Discover the best tilt angle and direction for solar panel installation in Pakistan. Learn how to calculate the optimal tilt angle and azimuth for maximizing energy production. This article aims to provide everything you need to know about calculating the best angle and direction for solar panel installation in Pakistan. Specifically, we

THE BEST INSTALLATION DIRECTION OF PHOTOVOLTAIC PANELS



To find out, we used the MCS PV Output Calculator, which lets MCS-certified solar panel installers calculate the best direction and angle for panels anywhere in the UK. It reveals how much more, and less, energy a ???