

# THE CABLE CONNECTING THE PHOTOVOLTAIC PANEL IS NOT LONG ENOUGH



Every solar panel typically comes with a female and a male MC4 connector. Usually, the female MC4 connector stands for the negative terminal, and the male MC4 connector represents the positive terminal of the solar panel. The 2 310 Watt panels alone are definitely not enough to recharge the batteries fast enough though. connecting each



As with most solar panel questions, the answer to how long your solar panel cables can be is "it depends". A variety of factors will contribute to how long your particular cables can be, including the type and gauge of cable used, the number of panels in your system, the voltage rating of your panels, and local building code restrictions .



If you have chosen the spot for your Ring Stick Up Cam and don't have enough cable to place the Ring Solar Panel in direct sunlight, you can use a Ring Solar panel extension cable. Installation is simple and can be done without hiring a professional. The Ring solar panel comes with 13.1ft of cable. This will not work for everyone.



DC Solar Cable: 4mm. The 4mm DC pv cable is one of the most widely-used cables for solar connections. If you want to connect a 4mm solar cable, you basically have to connect the positive and negative cables from the strings directly to the solar power inverter (sometimes called the "generator box").



Using an inverter instead of directly connecting your solar panel system to household appliances is also better for the battery bank because it reduces how much current gets drawn at any given time. If your inverter were ???

# THE CABLE CONNECTING THE PHOTOVOLTAIC PANEL IS NOT LONG ENOUGH



Joining solar panel wires using MC4 connectors ensures a reliable and waterproof connection, maintaining the efficiency and safety of your solar power system. How to Make a Solar Panel Extension Cable? Making a solar panel extension cable involves using appropriate materials and tools to ensure a secure and reliable connection.



Loose connections refer to a condition where the mechanical linkage between components - usually the wire and terminal - isn't secure enough. These can occur at different points in your solar PV system, such as ???



For different solar cells, the dark current is different. The solar panel is short-circuited, which blocks a solar panel from working normally. Compared with the solar panel, it is an internal resistance.  $P = I^2 R$  (R: the equivalent internal resistance of the covered solar cell).



Line Loss from Long Solar Cable Run. Panel Configuration: Front two panels wired in parallel, back two panels wired in parallel, and then bringing those together in series. Power Analyzers: Used to measure voltage, ???

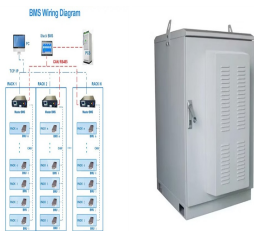


It can be seen that the conductor of ordinary cable and photovoltaic cable is the same, but the insulation and sheath are not the same, and ordinary cable is only suitable for laying and use in ordinary environments, while photovoltaic cable is mainly used in harsh climatic conditions, with high temperature resistance, cold resistance, oil resistance, acid and alkali ???

# THE CABLE CONNECTING THE PHOTOVOLTAIC PANEL IS NOT LONG ENOUGH



An array of solar panels will capture solar energy and convert it into electricity. The flow of charge in the solar panel wires connecting the solar cell is limited by the thickness of the copper wire. The regular solar panel wire is 10 AWG. Use the water flowing in the hose analogy to understand solar panel wiring sizing.



In a photovoltaic installation, various types of electrical cables are used to connect the different components of the system and ensure the efficiency and safety of solar energy generation. These are some of the common cable types in a photovoltaic installation: Solar (PV) Cables: Connect solar panels and system components to transport solar



Read our campervan solar panel guide - from choosing the correct solar panel for your battery, to fitting a solar panel to your campervans roof. A single 10w solar panel will be enough to trickle charge a 12v battery. For medium to heavy loads, just one 100w solar panel will keep your campervan's battery supplied with all the energy it



I currently have a RING Stickup Battery Camera and a RING Solar Panel. The cable between the two is not long enough for my application. I am trying to purchase a (+5v) DC Extension Cable to extend



Dual core cables are best for generator boxes and / or an inverter. Single core is ideal for various solar panel installations. AC Connection Cable AC connection cables hook up PV modules with the power grid and safety mechanisms. A 5 ???

# THE CABLE CONNECTING THE PHOTOVOLTAIC PANEL IS NOT LONG ENOUGH



String 1. Panels Connection TypeSeriesParallelNumber of PanelsVoc (V)Isc (A)Remove StringAdd String. Connecting Solar Panels in Strings. Connecting multiple solar panels is essential for efficient electricity ???



They usually include the solar panel, solar charge controller and mounting brackets. Some include extension wires. If you opt to buy a solar kit, check what's included and what additional things you'll need to buy. And make sure it makes economical sense. This is a 200 Watt Solar Panel Kit complete with: 2 x 200W 12V Monocrystalline Solar Panel



(1) Solar panel direct connection cable: In rooftop PV power plant systems, a solar panel direct connection cable is generally used as the main power supply to ensure the power quality of the system and the normal operation of the equipment.



Connect the positive (+) terminal of one solar panel to the negative (-) terminal of the adjacent panel using a cable with male and female MC4 connectors. You can check our last blog on how to identify the positive and negative connectors to ensure you connect them correctly. Repeat this process for all panels in the series string.



From the solar distribution box to the inverter, you will need thicker cable. It depends on how long the run it, but assuming it's 25 meters away, with 75 amps at a 5% voltage drop, 2 gauge ???

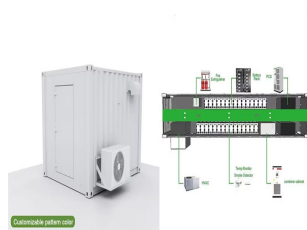
# THE CABLE CONNECTING THE PHOTOVOLTAIC PANEL IS NOT LONG ENOUGH



Connecting a Solar Panel to a 12 Volt Battery Step by Step. Most solar panels will come with the cables required to connect them to a charge controller; however, if yours did not, or the included cable is not long enough, you can ???



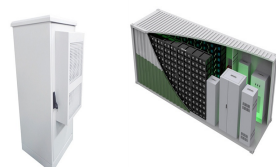
No it is not. Most solar panel installations are not disconnected once configured. There is no harm in unplugging the panels or turning it off, but it has few benefits. The purpose of a solar panel is provide energy to power appliances and devices.



Solar panel wires and cables help you extend the connection between solar panels and power stations. This Jackery guide will help you understand the pros and cons of each type, so you can pick the one that meets your needs. AC Connection Cable; If the distance is large, you'll need to choose a long, thick wire size.



PV-ULTRA2C6.0 Doncaster Cables PV-Ultra 2 x 6mm? Photovoltaic Cable - 100m - PV-ULTRA2C6.0 Add to Basket PV-ULTRA4C4.0 Doncaster Cables PV-Ultra 4 x 4mm? Photovoltaic Cable - 100m - PV-ULTRA4C4.0



It matters how many amps and volts you are putting into your wires and how big they are if your looking for 100w then you could run it more than 10 miles lots of maintenance though and would only lose about 10 or 5 wats depending on where the wires are sitting on if there rubber or plastic coating then not as much will be lost if there open 1

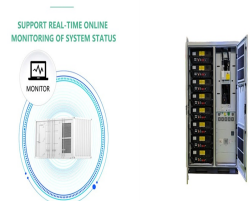
# THE CABLE CONNECTING THE PHOTOVOLTAIC PANEL IS NOT LONG ENOUGH



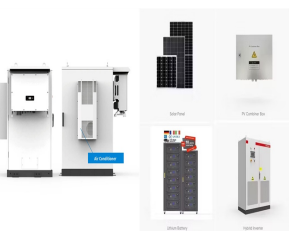
Not really. After a while the solar panel was able to give enough trickle charge to the camera to keep it at 100%. Maybe it's the time of year (changing pattern of sun movement or fewer leaves in the tree allowing more sun through, I don't know).



How Long is the Ring Solar Panel Cable? The Ring solar panel cable is typically 13 feet (4 meters) long. This length is designed to provide enough flexibility to place the solar panel in an optimal position for sunlight ???



Solar cable is also referred to as "PV wire" or "PV cable". Cable is the correct technical term as wires are simpler connectors than what we typically use for solar. Cable will typically run throughout your system, connecting solar panels to the inverter, charge controller, batteries and then to your home's grid or the national grid.



Let's say that your solar panel is expected to use ten amps. If so, your cable length can only be 4.5 feet with a 14 gauge cable. Unfortunately, 4.5 feet is not enough room for most solar panel cables. So, you will likely need to select the 10 or 12-gauge wire instead. In comparison, the 12 gauge wire can be 7 feet long if the panel has an



Plug the long solar panel cord into the generator connector. It is at the back. You can use an extension cable if the cord is not long enough. Step 4. Place another solar panel next to the one that is already plugged into the generator. Plug the longer cord on the second solar panel and connect it to the short cord on the first panel.

# THE CABLE CONNECTING THE PHOTOVOLTAIC PANEL IS NOT LONG ENOUGH

---



Extension Cables of Solar Panel. The cable length of Reolink Solar Panel is 4 meters. If it is not long enough in your case, you may consider purchasing our Solar Panel extension cable (4.5 meters/15 feet). You can use up to 2 extension cables for Reolink Solar Panel so that the total distance of the extension cable can reach up to 13 meters