

THE DEVICE CANNOT START AFTER ENERGY STORAGE



Why can't I start a device after installing devices? If you encounter Code 10 this device cannot start issue after you install devices or make changes in Device Manager, you can suspect the error is caused by these changes. In this case, you can try undoing the recent changes on the device driver to fix the error. Here's how to do it: Step 1. Remove all the external peripheral devices.



How to fix code 10 device cannot start error? The first way you should try to fix the Code 10 device cannot start issue is to reboot your computer as rebooting a computer can always fix problems. If this method does not work, you can try the following methods. Method 2. Run the Hardware and Devices Troubleshooter



Why can't I start a USB device? Method 8. Use a Powered USB Hub
Some USB devices need more power than the universal USB ports that are provided by the computer. If you don't offer enough power, you can encounter the This device cannot start. (Code 10) issue. In this situation, you can try to use a powered USB hub instead and then see whether the issue can be solved. Method 9.



It has been happening often. I am only finding a problem with I2C HID Device This device cannot start. Can someone please tell me if this is the reason for the issue. visuals come to life in the 15.6-inch Full HD display. 16 GB of latest-gen DDR5 memory as well as a hefty 1 TB of SSD storage = seamless multitasking and rapid load times



OK, I got info on my mail: "Topic: This device cannot start. (Code 10) Insufficient system resources exist to complete the API. Date: 06-16-2023 08:44 AM Did it solve your problem? Click here to view the replies and mark one as an Accepted Solution. This helps others find helpful answers in the comm

THE DEVICE CANNOT START AFTER ENERGY STORAGE



To alleviate the issue I installed a Samsung 850 Pro SSD. Unfortunately it caused me more problems than I was expecting. After installing the drive and reinstalling windows I found that USB mass storage devices would not work any more. In Device Manager all I saw was this message: This device cannot start. (Code 10)



Update the Device Driver. This machine won't turn on. A device driver that is no longer current can also result in (Code 10). The device driver should be updated to the most recent version in order to resolve this problem. Press the Windows key and the X key simultaneously to display the WinX menu. Select Device Manager.



Enabling/disabling works everytime. It's only after it's been slept or shutdown the card may not start. From this state, the only solution is a hard reset. (Hold power button 10seconds. I do this from BIOS to prevent corruption from dirty shutdown) Enable device from the code 10 state does not work. Only the 2nd time it's done it today.



If all the above methods fail to fix This Device Cannot Start Code 10 Then you can Download Microsoft official USB diagnostic Tool From the Given Download link. Download USB Fix Tool Note: This Diagnostic Tool Help to fix USB audio, storage, and print devices???such as thumb drives, USB hard drives, and USB printers???that do not eject using



In Device manager (General) it says . This device cannot start. (Code 10)
In the Events tab it says:-Device USBVID_152D&
PID_0567152D00539000 had a problem starting. Driver Name: usbstor f.
Class Guid: {36fc9e60-c465-11cf-8056-444553540000} Service:
USBSTOR. Lower Filters: Upper Filters: Problem: 0xA. Problem Status:
0xC0000001

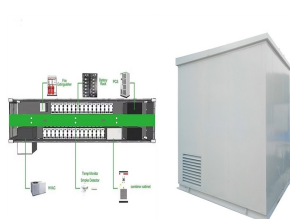
THE DEVICE CANNOT START AFTER ENERGY STORAGE



In all cases I am told that the driver installed but the the device can not be started . the driver was installed but "this device cannot start. (Code 10)" In all cases I uninstalled and deleted the previous drivers first. Like nh29 I have a degree in electronic engineering (thought I am not chartered) .



Finally, verify this device cannot start code 10 is fixed. Since this process may be complex and tedious, you may use any robust driver update software to automate the process. More specifically, we suggest you're using a specialized driver tool that can entirely scan the PC and detect outdated drivers that need to be updated. Afterward, you



Under the second tab "Boot", check "Safe boot" under boot options, use "Minimal" sub-option. Click OK and reboot. At reboot enter bios and change controller to RAID, save bios and ???



Step 1: Connect a portable device or USB storage device to the system. Step 2: Select "Settings > System > Back Up and Restore > Copy to USB Storage Device". Step 3: Select "Back Up". Confirm the data you'd like to back up. Step 4: Then, you can customize the name of the backup. After that, highlight "Back Up" and press the "X" button.



Even without this limitation, EVs cannot start normally at extremely low temperatures due to the severe reduction in battery power [41]. In terms of charging, in order to protect batteries, EVs limit fast charging and energy recovery from braking at low temperatures. the current device can achieve an energy storage density at 113 Wh/kg and

THE DEVICE CANNOT START AFTER ENERGY STORAGE



Right click on your Windows Start button and click on "Device Manager" from the list. In Device Manager, expand the section >Bluetooth and look for your Bluetooth radio device. It should say Bluetooth device in the title. Right click on it and then click on "Uninstall device". After uninstallation, close Device Manager and then reboot your



The "this device cannot start" code 10 error is commonly related to removable devices. It appears when Windows can't run a piece of hardware, such as a printer or USB ???



In other words, these components of a battery energy storage system ensure the whole system works as it should to produce electrical power as needed. Thermal Management System. With current flowing in its circuits, an energy storage system will undoubtedly heat up. If the heating were to go unchecked, temperatures could reach ???

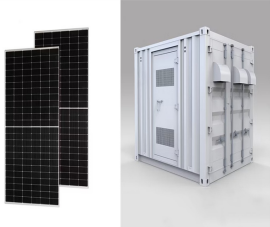


Hi, Dave, After "automatic repair" and "diagnosing your PC", the system goes to troubleshooting, Advanced options > Startup Settings > Restart. After the PC restarts, BitLocker asks for the recovery key again. Then a list of options will be shown, including 4: safe mode. But after I press 4, it still can not go to safe mode.



Combined with the second section of the train energy flow model, we finally achieve accurate SOC estimation of the on-board train energy storage device. As described in Fig. 3, the SOC estimation process of the on-board train energy storage device mainly consists of two parts. The first part is the experimental part.

THE DEVICE CANNOT START AFTER ENERGY STORAGE



For the research on energy storage capacity and start-up time, reference introduced the first phase of China's scenic storage demonstration project for 98.5 MW wind power and 40 MW PV power generation with 20 WM hybrid energy storage device; Reference analyses the optimal capacity and cost of hybrid energy storage systems in standalone DC



Memory & Storage; Visual Computing; Embedded Products; Graphics; Processors; Wireless; Ethernet Products; This device cannot start. (Code 10) Insufficient system resources exist to complete the API. Subscribe energy and started to feel disgust to computing: never expected that it may happen, after 45 years in cooperation with this



For the research on energy storage capacity and start-up time, reference [24] introduced the first phase of China's scenic storage demonstration project for 98.5 MW wind power and 40 MW PV power generation with 20 WM hybrid energy storage device; Reference [25] analyses the optimal capacity and cost of hybrid energy storage systems in



There are many factors that can cause this situation. For example: correct set SATA mode in BIOS (should be "Intel RST."), hardware remapping on PCIe slot should be ???

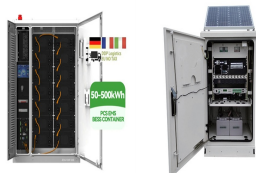


Electrical energy storage plays a vital role in daily life due to our dependence on numerous portable electronic devices. Moreover, with the continued miniaturization of electronics, integration

THE DEVICE CANNOT START AFTER ENERGY STORAGE



Open Device Manager by clicking the Start button, clicking Control Panel, clicking System and Security, and then, under Systems, clicking Device Manager. If you're prompted for an administrator password or confirmation, type ???



Step 1. Press the Win + R keys simultaneously to open the Run window..

Step 2. Type "regedit" in the box and press Enter to open the Registry Editor window. Step 3. Navigate to this location:

HKEY_LOCAL_MACHINE\SYSTEM\CurrentControlSet\ControlClass.. Step

4. Choose the problematic Class GUID from the list. Step 5. Select the

UpperFilters and ???

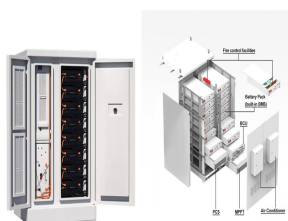


Scenario #2: Cannot start the PS4 ??? Cannot access system storage

??? (CE-34335-8) In this scenario, users will get the following screen

message: Cannot start the PS4. Cannot access system storage. Press the power button for 1 second (until the system beeps) to turn off the PS4.

(CE-34335-8) What users reported on this error



Detailed Device Status: This device cannot start. (Code 10) {Operation

Failed} The requested operation was unsuccessful. Troubleshooter:

Troubleshooter simply says hardware or software problem. Basically the

network troubleshooter says a lot about nothing. This thread is locked.

You can vote as helpful, but you cannot reply or subscribe to this