

THE DIFFERENCE BETWEEN PHOTOVOLTAIC PANEL BLOCKS AND SCREWS



It is important to know what type of solar panel mounting system is the best for you. This type of installation directly uses bolts and screws to secure each panel to the roof. Its advantage is that manufacturing and shipping costs are reduced, which makes the installation faster. chalk blocks, rails, clamps, bolts, screws and more



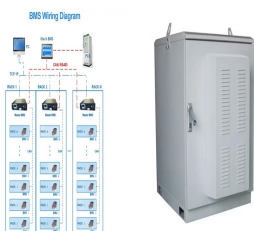
"Ground screws work in a wide range of soils and it comes down to how you design the ground screw to accommodate where you're trying to install into," said Richard Van Fleet, director project operations at TerraSmart. "On a looser site, you might have a longer or wider ground screw vs. a rocky site.



This comprehensive guide delves into solar panel mounting hardware, offering insights into its importance, types, materials, and more. Selecting appropriate mounting hardware is vital for solar panels" optimal ???

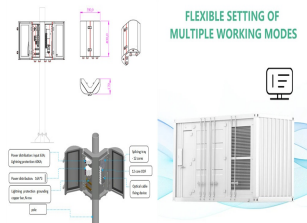


Photovoltaic cells are the basic building blocks of a solar PV panel, and several solar panels make up a solar PV array. A solar photovoltaic system can comprise of one or more solar panels. Usually, the number of ???

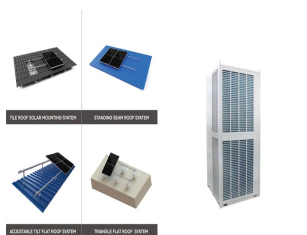


The nuts and bolts used for solar panel installation should be made of special alloys that can withstand high pressure from sunlight and can withstand rain and other climate changes. solar panel screws should be steady and must have ???

THE DIFFERENCE BETWEEN PHOTOVOLTAIC PANEL BLOCKS AND SCREWS



These days almost all people have come across objects that have required fasteners as their building blocks, but very few might have noticed the difference between Project screws for outdoor furniture self tapping screw manufacturers self-drilling screw self-tapping screw self-tapping screws for aluminum solar panel fasteners SS Chipboard



These points will help you understand the difference between solar cell vs solar panel. 1. Term. The primary difference between solar cell vs solar panel is that solar cells are a narrow term because they are a single ???



Finally, you can use ballasted racks to hold the solar panel in place without using screws or bolts. What equipment is used to attach PV panels to a sloped rooftop? The equipment used to attach PV panels to a sloped ???



Innovation is key to keep the industry moving forward. We all know the challenges and problems added to a roofing system due to higher point loads, finding the mid third (Code) for a 5/16??? lag without damaging a 2 x 4 rafter, installing a metal flashing above the underlayment and the risk of damaging its integrity.



To do this, you need to select the right solar panel roof screws to hold the panels in place and protect your client's investment. Our Top Picks for Solar Panel Mounting Screws. The roof is an ideal place for solar panels because of the sun exposure, yet this location endures unfavorable conditions like rain, snow, heat and wind.

THE DIFFERENCE BETWEEN PHOTOVOLTAIC PANEL BLOCKS AND SCREWS



Ground screws are pivotal in the installation of solar panels, providing a sturdy, reliable foundation without the need for extensive groundwork. These innovative components are not only instrumental in simplifying the mounting process but also contribute significantly to the overall stability and durability of solar panel systems.



Materials Needed for Building a Photovoltaic Solar Panel. Of course, you can only build your own solar panel system with the appropriate equipment. Don't worry. Everything you need is listed in this section. Solar Cells. The show's star is solar cells, so you must prioritize buying them before you build a solar panel system.



Whenever we discuss screw head options with customers, this is one of the commonest questions to arise. The image below highlights the difference on the screwdriver head, which corresponds with the difference in the screw recess pattern.



Solar Panel Farms: Discover the benefits and disadvantages of Ballasts Vs Pilling for PV farm foundations solutions from Venture Steel Group. Ground Screw Systems; Pile Mounting Systems; Solar Panel Frame Mount; Solar Panel Site Accessories. Sheep Guards; Instead, heavy materials such as loose stones in containers or concrete blocks are



Solar energy is rapidly gaining popularity as a clean and sustainable source of power. As customers explore the possibilities of harnessing solar energy through solar panels, it is essential to understand the ???

THE DIFFERENCE BETWEEN PHOTOVOLTAIC PANEL BLOCKS AND SCREWS



Selecting the right foundation for a ground-mounted solar PV installation is critical for its success as the use of an incorrect foundation can result in premature refusal, costly change orders and project delays. Selection should be based on a geotechnical study of the project area to determine the best option. Here, we will look at the different types of ???



1. How impactful are driven pile foundations and ground screws to the bottom line in solar projects? A breakdown of cost, time, and outcomes in the use of ground screws vs. driven piles across two 10 MW site When examining different ways to remediate refusals???which ground screws do not require???it becomes clear that



Screws and Bolts. Definition: Screws and bolts are common fasteners used to affix two or more components together. Applications: Solar panel installation: used to secure panels to mounts. Connecting mount ???



The main difference between photovoltaic panels and solar thermal panels is therefore the type of energy they produce. Photovoltaic panels produce electrical energy, while solar thermal panels produce thermal energy. ?>>?Tamper-proof screws, also known as security or anti-theft screws, are recognized by the special configuration of their



Solar panel installation: used to secure panels to mounts. Connecting mount components: for joining various sections when constructing mounting structures. Considerations: Material selection: consider environmental factors such as humidity, salt spray, and temperature changes to select appropriate screw and bolt materials.

THE DIFFERENCE BETWEEN PHOTOVOLTAIC PANEL BLOCKS AND SCREWS



At 2022 prices, a 250 watt solar panel costs between \$400 and \$500, although this varies depending on the type of PV panel and size of the solar PV panel system. The most popular size when installing solar panels is a 4 kilowatt system, which normally consists of 16 panels, the total cost being around \$6,400.



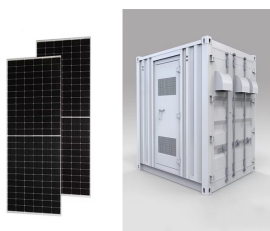
1. What are Ground Screws? Ground screws, also known as ground anchors or screw piles, are metal posts that are screwed into the ground to provide a stable foundation for solar panel systems. They are an alternative to traditional concrete foundations and offer several advantages. 2. Advantages of Ground Screws



9 Case Study: Ground Preparation and Foundation for a Residential Solar Panel Array. 9.1 Background; 9.2 Project Overview; 9.3 Implementation; 9.4 Results; 9.5 Summary; 10 Expert Insights From Our Solar Panel Installers About ???



Fenice Energy is looking into these new uses of solar power, ensuring more people can enjoy its benefits. Conclusion. The key difference between solar and photovoltaic cells is their use. Both change sunlight into ???



Photovoltaic cells are the part of the solar panel that reacts to the sun to create a positive and negative charge that creates a voltage that moves around the cell. The panel then forces this voltage into a wire, making ???

THE DIFFERENCE BETWEEN PHOTOVOLTAIC PANEL BLOCKS AND SCREWS



The Difference Between Solar Panels and Photovoltaic Cells When it comes to harnessing the power of the sun, two commonly used technologies are solar panels and photovoltaic cells. While both are designed to convert sunlight into usable electricity, there are some key differences between the two. In this article, we will explore the distinctions between



When selecting the appropriate ground screw product for a photovoltaic project, several factors must be carefully considered to ensure the optimal performance and longevity of the solar panel support system. Here are the key steps and considerations in choosing the right ground screw:



Loosen the fuse holder's screws with a Phillips screwdriver, insert the crimped cable's copper core into the bottom of the fuse holder, and tighten the screws to a torque of 2.3Nm. Tighten the cable gland nuts. Note: ???



Marking the Spot: The locations for the screws are marked based on the site analysis. Driving the Screw: Specialized machinery is used to drive the screws into the ground. Mounting the Panels: Once the screws are securely in place, solar panels are mounted onto them. mermaid; Factors to Consider Before Opting Soil Type



With the help of our certified installers, GoliathTech's screw piles will support the foundation of your solar panel for many years to come. Finally, don't forget that screw pile foundations are much more economical than traditional concrete foundations. This is ???

THE DIFFERENCE BETWEEN PHOTOVOLTAIC PANEL BLOCKS AND SCREWS



This type of mounting system involves placing weight, such as concrete blocks, on top of the bracket to secure it to the ground. Ballasted mounts are often used on flat or low-slope roofs, as well as in areas where drilling into the ground is not feasible. This makes them an ideal choice for both residential and commercial solar panel



Solar panels and photovoltaic cells (PV cells) refer to different parts of the same system. A PV cell is a single unit that contains layers of silicon semiconductors. When you exposed them to sunlight, loose electrons are ???



Table of Contents. 1 The Basics of Photovoltaic (PV) Technology. 1.1 The Concept of Solar Thermal Energy; 1.2 Comparison of Photovoltaic (PV) Panels and Solar Thermal Panels; 1.3 Comparing the Efficiency of PV and Solar Thermal Panels; 1.4 The Best Applications for Each Type of Panel; 1.5 The Environmental Impact of PV and Solar Thermal Systems; 1.6 ???