

THE LIGHT OF THE PHOTOVOLTAIC PANEL IS NOT ON



Mafate Marla solar panel . The photovoltaic effect is the generation of voltage and electric current in a material upon exposure to light is a physical phenomenon. [1]The photovoltaic effect is closely related to the photoelectric effect. For both phenomena, light is absorbed, causing excitation of an electron or other charge carrier to a higher-energy state.



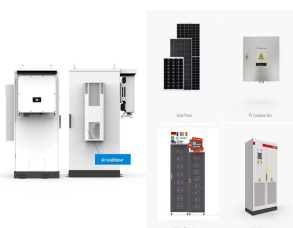
The race to produce the most efficient solar panel heats up. Until mid-2024, SunPower, now known as Maxeon, was still in the top spot with the new Maxeon 7 series. Maxeon (Sunpower) led the solar industry for over a ???



The theory of solar cells explains the process by which light energy in photons is converted into electric current when the photons strike a suitable semiconductor device. The theoretical studies are of practical use because they predict the fundamental limits of a solar cell, and give guidance on the phenomena that contribute to losses and solar cell efficiency.



Assuming reserving 50% of it for photovoltaic panel production and knowing that using the crystalline technique requires 20 kg of silicon per kWp to be produced, each year world production could increase by 750 MW (0.75 ???)



A solar panel will not turn solar energy into direct current until there is a circuit. If there is no circuit, the solar panel will just "sit there" as the photons will not be converted into electricity. The panels will get hotter true, but the modules are going to get hot anyway if you connect a load to it.

THE LIGHT OF THE PHOTOVOLTAIC PANEL IS NOT ON



The band-gap of a solar panel is usually between 400 nm and 1100 nm. The most common type of solar panel has a band gap of around 850 nm. Solar panels are made from materials that have a large number of atoms. These materials are known as semiconductors. When light hits a solar panel, it causes the electrons in the semiconductor to move around.



When light shines on a photovoltaic (PV) cell ??? also called a solar cell ??? that light may be reflected, absorbed, or pass right through the cell. The PV cell is composed of semiconductor material; the "semi" means that it can conduct ???



Solar PV is largely maintenance-free. But minor issues can impede power production for weeks without you noticing. In a study of 255 PV powered homes in the U.S, 54 had issues with their PV system. Most homeowners had no idea their PV system had a fault. Your electricity bill should tell you if your system's producing expected generation.

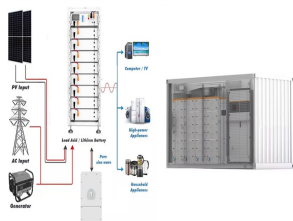


Solar array mounted on a rooftop. A solar panel is a device that converts sunlight into electricity by using photovoltaic (PV) cells. PV cells are made of materials that produce excited electrons when exposed to light. The electrons flow through a circuit and produce direct current (DC) electricity, which can be used to power various devices or be stored in batteries.



Photovoltaic cells convert sunlight into electricity. A photovoltaic (PV) cell, commonly called a solar cell, is a nonmechanical device that converts sunlight directly into electricity. Some PV cells can convert artificial light into electricity. Sunlight is composed of photons, or particles of solar energy. These photons contain varying amounts of energy that ???

THE LIGHT OF THE PHOTOVOLTAIC PANEL IS NOT ON



c. If the meter remain blanks and the inverter is not generating then it suggest there is AC problem, ensure then above sets have been followed which will ensure an AC supply is present to both the meter and the inverter. d. If the meter has a display, the red light flashing and the inverter is generating then the



Some customers hear that solar panels have an efficiency rate of 22% and wonder why it's not 100%. Some sunlight will be reflected off the panel or be turned into heat instead of electricity. Solar cell materials also can't absorb all the types of light that make up sunlight, like infrared light.



A typical residential solar panel with 60 cells combined might produce anywhere from 220 to over 400 watts of power. Depending on factors like temperature, to create an electrical current. The process of how PV ???



For a fixed solar installation, it is preferred that the PV panels are installed with a centralised tilt angle representing the vernal equinox, or the autumnal equinox, and in our example data above this would be about 38 degrees (38 o).. However, this tilt orientation is not as critical with regards to the solar panels orientation as even at a tilt angle of nearly 45 degrees (45 o) with



3. Solar Panel Not Connected to Charge Controller. If a solar panel is not connected to a solar charge controller, many issues can arise. These may affect the performance and life of the system. a. Overcharging of Batteries. Solar panels produce different levels of voltage and current according to the intensity of solar radiation.

THE LIGHT OF THE PHOTOVOLTAIC PANEL IS NOT ON



A typical solar panel system consists of four main components: solar panels, an inverter, an AC breaker panel, and a net meter. Components of solar panel system: solar panels, inverter, AC breaker panel, and net meter. Solar panels are a fundamental part of the system. They have the ability to absorb light and transform it into electricity.



Key learnings: Solar Cell Definition: A solar cell (also known as a photovoltaic cell) is an electrical device that transforms light energy directly into electrical energy using the photovoltaic effect.; Working Principle: The working of solar cells involves light photons creating electron-hole pairs at the p-n junction, generating a voltage capable of driving a current across ???



The increasing integration of smart solar panel technologies, including sensors and Internet of Things capabilities, is revolutionizing the solar industry with this new solar panel technology. This integration enables superior monitoring, maintenance, and optimization of solar panel performance, leading to enhanced efficiency and effectiveness.



Naked Solar's guide to fault finding and trouble shooting common problems with solar panel systems and set ups. UK Solar PV Installer of the Year 2016: Winner, 2017: Runner Up If there is enough light outside for the panels to generate ???

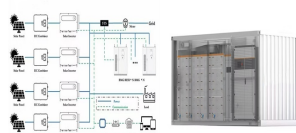


Enpulz, LLC's "Solar Panel Light Indicator/Decorative System," patented January 1, 2013 U.S. Patent 8,344,240 Solus Engineering's "Roof Tiles and Related Systems," patented May 6, 2014 U.S. Patent

THE LIGHT OF THE PHOTOVOLTAIC PANEL IS NOT ON



Damaged wiring between the solar panel and battery is a frequent cause of solar light failure, requiring inspection and repair. Faulty light sensors can prevent solar lights from turning on; cleaning the sensor, ???



Say goodbye to solar light frustrations with our detailed guide. Explore 12 common reasons why your solar lights not working, from simple battery swaps to more technical sensor repairs. Authored by an experienced ???



The problem with solar cell efficiency lies in the physical conversion of sunlight. In 1961, William Shockley and Hans Queisser defined the fundamental principle of the solar photovoltaic industry. Their physical theory proved that there is a maximum possible efficiency of 33.7 percent which a standard photovoltaic cell (based on a p-n junction) can achieve to ???



It reduces the higher PV side voltage to the lower Battery side voltage. It can't boost the (too low) voltage from a PV panel in order to begin charging a battery. Working at up to 98% efficiency the MPPT can accept any PV side voltage up to ???



Photovoltaic solar cells convert the photon light around the PN-junction directly into electricity without any moving or mechanical parts. PV cells produce energy from sunlight, not from heat. In fact, they are most efficient when they are ???

THE LIGHT OF THE PHOTOVOLTAIC PANEL IS NOT ON



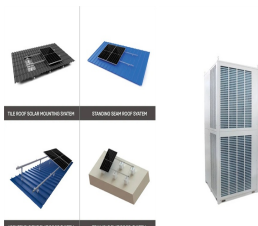
While photovoltaic panels are a type of solar panel, solar panels can also include solar thermal panels, which generate power using the heat from the sun as opposed to light. PV systems convert energy using cells with semiconductors, while solar thermal panels utilise tubes filled with a liquid (often glycol) with antifreeze to capture heat.



The photovoltaic process bears certain similarities to photosynthesis, the process by which the energy in light is converted into chemical energy in plants. Since solar cells obviously cannot produce electric power in the dark, part of the energy they develop under light is stored, in many applications, for use when light is not available.



Solar panel power ratings are measured in Watts (W) and determined under standard test conditions (STC) at 25°C in a controlled lab environment. However, a solar panel will generally not produce at 100% of its rated power in real-world conditions due to one or more of the issues and loss factors listed below.



The solar panels that you see on power stations and satellites are also called photovoltaic (PV) panels, or photovoltaic cells, which as the name implies (photo meaning "light" and voltaic meaning "electricity"), convert sunlight directly into electricity. A module is a group of panels connected electrically and packaged into a frame (more commonly known as a solar ???



The solar panel needs sunlight to recharge the battery, so if the panel is in a shady spot, the battery may not get enough power to operate the light at night. Keep the light sensor clean. Dust and dirt can accumulate on the ???