

THE PHOTOVOLTAIC PANELS ARE GCL A-GRADE PANELS



What is a Grade A solar panel? Understanding the Solar Panel Grades of Cells Grade A solar cells are easily the most sought-after for their premium quality. They are devoid of any chips, cracks, and scratches, which helps them convert solar energy into electricity at their best efficiency.



What does a Grade C solar panel mean? Grade C should be quite obvious and would also mean the power of your panel is below the rating.. J.T. What would be the typical price difference between a Grade A and a Grade B solar cell? The price difference between Grade A and Grade B solar cells can easily be USD 0.05 - 0.10/W..



What is a Grade B solar panel? Grade B solar panels have visual defects but meet performance specifications. These solar panels are less common than grade A solar panels but are typically available from manufacturers upon request. Most manufacturers keep these panels for testing purposes but sell them with warranties like grade A solar panels.



How many GCL solar panels are there in Australia? Currently, 39 GCL solar panels are approved by the Clean Energy Council (listed under the name of GCL System Integration Technology Co Ltd) for the Small-scale Renewable Energy Scheme ??? Australia???'s home solar rebate program. The GCL-M8/60H has 120 half cut monocrystalline solar cells and is one of GCL???'s best performing solar panels.



What are Grade C and grade D solar panels? Grade C and Grade D panels occupy a niche in the solar panel spectrum, and their use is relatively rare: Grade C Panels: These panels often have severe cosmetic flaws or are made from cells with visible damage. They are typically unsuitable for standard solar installations.

THE PHOTOVOLTAIC PANELS ARE GCL A-GRADE PANELS



Are Grade C solar panels worth it? Grade C solar panels have visual and performance defects, causing them to fall far behind in desirability. Grade C solar panels usually sold overseas at far lower prices in third-world countries. Buying these solar panels is not worth it as they break down much faster and don't make nearly as much power as grade As and Bs.



The Open Circuit Voltage (Voc) rating of a solar panel, on the other hand, indicates the voltage measured across the panel's terminals under ideal conditions when no load is connected. For instance, as shown in the image above, my solar panel has a Voc of 22.5 Volts. This means that under Standard Testing Conditions, the panel should measure



Exactly how much a solar panel costs per kilowatt depends on the type of solar panel you are talking about. Monocrystalline solar panels are the most expensive, and their cost per kW is somewhere around \$1,000 - \$1,500 whereas polycrystalline solar panels cost about \$900 per kW. When it comes to thin-film solar panels, these cost between



China Others Tier 1 Solar panel catalog of Tier 1 Jinko Ja Solar Yingli Gcl Talesun 400W 405W 410W Solar Modules Best Quality with 25years Warranty, Hjt 700W 710W 720W Bifacial Solar Module Panel provided by China manufacturer - Hefei Pinergy Solar Technology Co., Ltd., page1. a-Grade Monocrystalline. Contact Now Inquiry Basket. Video. Tier



Cells Solar Panel 540w 550w 555w photovoltaic solar panels monocrystalline A Grade, You can get more details about GCL 182 Cells Solar Panel 540w 550w 555w photovoltaic solar panels monocrystalline A Grade from mobile site on Alibaba Longi High Efficiency Hi-Mo 9 Solar Panels 660w A Grade LONGi Himo 9 Pv Solar Power Modules

THE PHOTOVOLTAIC PANELS ARE GCL A-GRADE PANELS



Assessing the grade of a solar panel is a crucial step in ensuring you invest in a system that meets your energy needs and quality expectations. Here, we explore the two key factors to consider when ???



Es gibt hunderte Hersteller und noch mehr Modelle von PV-Modulen auf dem Markt. Die Auswahl fällt daher schwer. Wir haben 20 Solarmodule verschiedener Hersteller miteinander verglichen und teilen mit Ihnen unsere Erfahrungen im grossen Solarmodul-Test und -Vergleich 2024.



GCL operates five solar panel production facilities in China and one in Vietnam with a stated total production capacity of 12GW per year. This makes GCL a medium sized solar panel manufacturer. On 19 December 2018, all GCL solar panels were de-listed from the Clean Energy Council's Approved Product List due to the existence of components

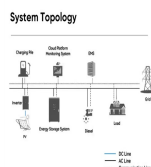


Aiko solar panel Risen solar panel Longi Solar Panel Jinko Solar Panel JA Solar panel Trina solar Yingli Solar Panel GCL solar panel Others Tier 1 Solar panel . Hot Selling Ja N-Type 565W 570W 575W 580W A Grade Solar Panel. US\$0.10-0.15 / watt. 100,000 watt (MOQ) Trina Solar Vertex S PV Mono 640W 650W 655W 660W 132 Half Cells Solar Panel



5 ? China is the global powerhouse in solar panel manufacturing, driving the industry with unparalleled production capabilities and cutting-edge technological advancements. As the world's leading producer, China commands over 95% of the global market for key components such as polysilicon, ingots, and wafers, essential for solar panel production. The country's dominance ???

THE PHOTOVOLTAIC PANELS ARE GCL A-GRADE PANELS



All solar panel strings connected in parallel have to feature the same voltage, and they also have to comply with the NEC 690.7, NEC 690.8(A)(1), and NEC 690.8(A)(2). Modules need to be the same model in all cases in order to ???



Technically, Tier 1 is a financial classification applied to solar panel manufacturers. Tier 1 solar panel manufacturers tend to offer superior warranty support they can back up with a history of performance. Our recommendation: It's definitely worth paying extra for Tier 1 solar panels when buying solar panels for your home.



W Solar Panel 72 Cell GCL-M6/72H370 Commercial 720 panels per Container. Rated Power Output 370 W; Voltage (VOC) 47.8V; Number of cells 72; When it comes to estimating the cost of a solar panel system, remember that the prices can vary heavily depending on the brand. Chinese panels are the cheapest.



2MW / 5MWh
Customizable



GCL, 330W PV Module, MC4 or Compatible, PV Wire, 40mm Silver Frame, 72 Cell Poly, 15A Fuse, 1000VDC, 4BB, No PTC, GCL-P6/72-330. GCL-Poly Energy Holdings Limited("GCL-Poly", a constituent of Hang Seng Composite Index, stock code: 3800.HK) is one of the world's largest solar photovoltaic enterprises. GCL is dedicated to promoting the



The other entities are Xinjiang Daqo New Energy Company, Xinjiang East Hope Nonferrous Metals Company, Xinjiang GCL New Energy Material Technology Company, and the Xinjiang Production and

THE PHOTOVOLTAIC PANELS ARE GCL A-GRADE PANELS



COP29 Insights: Decoding LONGi's Strategy for Facing Climate Change and Advancing Energy Equity "As advancements in photovoltaic technology continue and costs steadily decline, the solar industry is increasingly overcoming the challenges posed by the intermittency and discontinuity of solar power in certain regions.



Fig.8: PV ModuleTech Bankability Rankings: Q1'21 Pyramid (source: PV-Tech Research 2021) Year 2022. At the beginning of 2022, only 50 solar module brands managed to obtain a spot on the bankability ratings while ???



So Energy 's solar panel packages start at ?4,917, while solar and battery packages start from ?9,068. If So Energy installed your solar and battery system on or after 01 September 2023, you can sign up to the So Bright export tariff, which pays ???

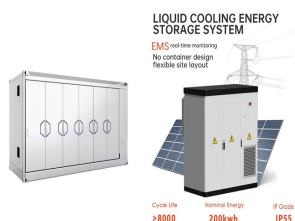


Solar panels are categorised into grades ranging from A to D, with the A-grade bracket further divided into A+ and A-. Understanding the grade of a solar PV panel is crucial in determining its quality and performance. In this article, we will provide an overview of the various solar panel grades and how to assess them.



Failed bypass diodes - A defect often related to solar panel shading from nearby objects. 1. LID - Light Induced Degradation. When a solar panel is first exposed to sunlight, a phenomenon called "power stabilisation" occurs due to traces of ???

THE PHOTOVOLTAIC PANELS ARE GCL A-GRADE PANELS



Corrosion-resistant aluminum frame for extended outdoor use. Suitable for Caravan, RV, Golf car, Electric car, Yacht, Boat, Tent or backpack etc. ??? High modules conversion efficiency. Grade A solar cell and IP68 Rated waterproof solar panel connectors. This PERC solar panel has 5 year 95% output warranty, 10 year 90% output warranty, 25



This Renogy 550W Monocrystalline Solar Panel maximizes power output while minimizing installation space and system equipment costs, primarily used for utility-scale systems, solar power plants, residential and ???



China Longi Solar Panel catalog of Tier1 Longi 440W 450W Solar Panel From Original Factory A Grade Solar Module, Longi High Power Output 455W Tier 1 Solar Panel provided by China manufacturer - Hefei Pinergy Solar Technology Co., Ltd., page1.



GCL System Integration (GCL-SI), the PV panel unit of GCL Group, unveiled a perovskite solar module at the SNEC trade show in Shanghai in May. The 320 W panel has a power conversion efficiency of



There are 4 levels of quality of solar silicon cells, called "Grade" - A, B, C, and D. Elements of different classes differ in their microstructure, which in turn affects their parameters and longevity. What is the difference between solar cells of ???

THE PHOTOVOLTAIC PANELS ARE GCL A-GRADE PANELS



GCL System Integration Technology Co., Ltd. Solar Panel Series GCL-M10/72 525-560W. Detailed profile including pictures, certification details and manufacturer PDF Solar Panel JF Solar Technology - JF-182DHM7C-530-550W Double Glass PERC From 0.0861 /



Grade Pada Panel Surya/Solar Panel. Panel surya merupakan gabungan rangkaian sel surya dengan kapasitas yang bermacam-macam begitu juga kualitasnya tergantung pada jenis sel surya yang digunakan. Kualitas sel



Golden Concord Holdings Limited, a large Chinese corporation, manufactures GCL solar panels. This corporation has assets worth \$21 billion worldwide, and it has been producing solar panels since 2016. Although this company is still new in the production of solar panels, it is fast becoming one of the largest solar panel manufacturers in the



3. Grade C solar cells. A Grade C solar cell has visible defects, and the electrical data are off-spec. All solar cells with defects worse than Grade B can be classified as Grade C. Or. A solar cell can be graded as C when the partly broken cell which could be cut into smaller pieces and re-used.