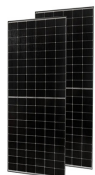


# THE PHOTOVOLTAIC PANELS IN THE TILE HOUSE ARE NEATLY INSTALLED



In order to learn how to install solar panels on a tile roof, you must understand that tile roofs are harder to work on because the clay tiles are brittle and can easily be broken or damaged. Most often, installing solar panels on a tile roof requires the temporary removal of a few tiles (to cut holes), potentially exposing your roof to water damage.



The roof tiles in the region where the solar panel will be installed are removed, and composite shingles are installed in their place, preventing the panels from being drilled directly into your roof tiles. Sheet metal reinforcement is used at transitions to provide total waterproofness of the roof.



Comparison of Panel Types. When choosing a photovoltaic panel, it is essential to consider the efficiency, cost, and available space for installation. Monocrystalline panels are the most efficient but also the most expensive. Thin-film panels are the least efficient but the most affordable. Polycrystalline panels fall in the middle range of



With rising electricity prices and climate change concerns, more homeowners are looking to install rooftop solar panels. But what if you have an aesthetically pleasing slate roof? Many wonder whether solar PV can be added without compromising the roof's integrity or durability. The good news is that solar panels can successfully be installed on slate



Modern solar panel roof tiles offer several advantages over traditional solar panels. Here are a few key benefits: Aesthetics and Integration: Solar panel roof tiles are designed to seamlessly integrate into the roof, creating a cohesive and visually appealing look. The tiles come in various styles and colors, allowing homeowners to choose an

# THE PHOTOVOLTAIC PANELS IN THE TILE HOUSE ARE NEATLY INSTALLED



Our photovoltaic tiles seamlessly blend into traditional roofs, offering efficient solar energy solutions commissioning, handover pack and MCS Certificate - as you would on any other solar PV installation. Solar slates and tiles - buyer's ???



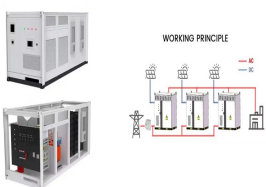
panels are installed. More details about insuring solar panels. Roof-integrated panels, tiles and slates On new buildings or when a house is being re-roofed, you may prefer a roof-integrated solar PV system. The type of roof fixing will depend on your choice of solar PV system. If solar tiles are being used they can be fixed to the batons like



can be produced to exact dimensions with generating triangle and rhomboid shaped panels. PV slate tiles. The solar PV Slate tile, also from GB-Sol, is a photovoltaic unit that visually emulates a row of 3 standard 24" x 12" (600 mm x 300 mm) "Duchess" roofing slates.



3. Make space for the solar panel accessories (solar inverter, cables and solar batteries, if desired), for instance in a plant room. 4. Plan a day for installation. 5. Erect the scaffolding (this can be done by your supplier or by a company you organise) 6. The solar panel mounts will be installed. 7. The professionals will install the solar



Metrotile are revolutionising the solar roof system, with a brand new, fully integrated solar tile entitled the "Metrotile eQube Solar Tile". Metrotile's incredibly secure and lightweight Qube profile, now complimented with sleek, low-weight ???

# THE PHOTOVOLTAIC PANELS IN THE TILE HOUSE ARE NEATLY INSTALLED



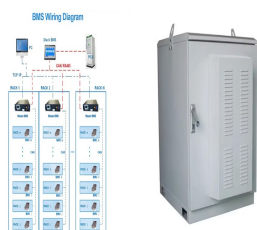
Solar Panel Roof Tiles Installation. Installing standard rooftop solar panels usually takes around two days. Replacing roofing tiles with solar tiles should take about a week. Solar panels are mounted on top of roof tiles or slates, bolted on with mounts and clamps. The number of panels varies from house to house.



Note that solar tiles cost about 4-5 times as much as standard solar panels, due to the increased labour and products on offer. For most people interested in PV tiles, integrated solar panels are a better option. GB-Sol. One of the few solar panel tiles already on the market, GB-Sol's PV Slate is manufactured in Wales.



2 General good practice during installation 3 3 Photovoltaic systems 7 3.1 Overview of PV in the UK 7 3.2 Installation 7 4 Solar thermal systems 17 4.1 Overview of solar thermal systems in the UK 17 4.2 Installation 19 5 Building-mounted microwind turbines 22 5.1 Overview of building-mounted microwind turbines in the UK 22



Unlike regular solar panel installation, you'll also need to take the roof retrofitting into account, which involves removing and installing the slates/tiles. then it's the perfect time to invest. However, if you'll need to remove a section of tiles just to install the panels, it probably isn't worth it ??? the added cost of



Solar roof tiles allow you to harness the sun's power to generate green energy without changing the appearance of your property. Studies show that aesthetic characteristics are one of the factors limiting solar panel adoption in the UK. Solar roof tiles are an excellent alternative to solar panels if you're a design-conscious homeowner looking for sustainable ???

# THE PHOTOVOLTAIC PANELS IN THE TILE HOUSE ARE NEATLY INSTALLED



Thank you so much Solar Panel Protect for Evicting our pigeons and giving our house back! Rory was punctual, very polite, thorough and keen to explain each stage of the mesh protection process. He also undertook additional cosmetic ???



Technical drawings showing installation of integrated solar PV and solar thermal panels in slate and tile roofs and solar thermal plumbing systems. Toggle navigation. About. Installation Instructions and Videos; Technical Briefings ???



NEW! 410Wp Solar Panel. Larger than Marley's 335Wp panel, the new 410 Solar Photovoltaic Panel delivers a peak power of 410Wp to increase total power from a roof area, whilst allowing for the installation of fewer solar panels to achieve ???



With the smallest carbon footprint and lowest water usage during manufacturing, Solstex panels are the photovoltaic (PV) industry's most eco-efficient. High-Efficiency High-Efficiency Solstex panels deliver significantly more energy than other PV panels, at up to 17.6 W/sq. ft. Installation Installation guide and specifications are available.



It is crucial to select tiles that are suitable for solar panel integration and ensure proper laying and blending techniques during the installation process. By following essential tips and guidelines, you can achieve a successful solar panel installation on your tiled roof.

# THE PHOTOVOLTAIC PANELS IN THE TILE HOUSE ARE NEATLY INSTALLED



How much does it cost to install solar panels on a slate roof? The average cost of installing solar panels on a three-bedroom house is £9,134. This is 30% more expensive than the typical cost of a solar panel installation ???



More than 1.3 million UK households now have solar panels. A typical three-bedroom home will save up to £454 a year on its energy bill with a solar panel system. Solar panels can help you cut your carbon emissions by around 12% annually. More than 1.3 million UK households now have solar panels installed and their popularity is only set to increase ??? which ???



The best position for a solar panel installation is on a south-facing section of your roof at a 30°-40° angle. Make sure to have a professional assess your roof to ensure that your integrated solar panels can be installed adequately for optimal performance. Covering the roof of a new 2-3 bedroom house with tiles on average costs £15,400



Roof-integrated solar panel installation is a simple process with Marley SolarTile(R) - just secure the fixings, place the first tile, push-fit additional tiles and then attach final fixings and flashings. The entire process can take less than one hour per kilowatt peak, and our integrated solar roof system is provided with all components in colour-coded boxes to make the process even easier.



However, it's crucial to approach installation with professional expertise to ensure safety and efficiency in the house. Throughout this article, we'll outline key considerations for successfully fitting solar panels to tiled roofs in the UK. When reinstalling the tiles after solar panel installation, ensure they are securely placed

# THE PHOTOVOLTAIC PANELS IN THE TILE HOUSE ARE NEATLY INSTALLED



In recent years, solar panels have become more popular than ever before, with the UK seeing more than 17,000 new solar installations each month so far in 2023. This isn't surprising, given that solar panels can dramatically cut your ???



House size Solar PV system size Cost of solar tiles; One-bedroom flat. 1 kW. ?8,050. 1-2 bedroom house. 2 kW. "If you have a solar panel installation of two by seven panels, 14 in total. If one or two of the panels suffer from a 50% drop in efficiency from shading, the entire system is reduced to this performance," he explained



Integrated solar panels are installed within the structure of your roof, rather than on top of its tiles like regular solar panels. Installing integrated solar panels for an average 3-bedroom home costs somewhere between ?5,000 ??? ?6,000. With such an installation, you can expect savings of up to ?660 per year on your electricity bill.; If you're looking to seamlessly blend form and



Unlike on-roof Solar Panels, which are installed on top of your roof tiles, integrated Solar Panels remove the roof tiles. This way the Solar panels can be embedded. Integrated Solar Panels are designed to behave as a roof tile would, they are 100% waterproof, yet also able to generate solar energy for your home!



Case Study: solar panel installation for an average UK home ??? House type: Semi-detached ??? Solar panels: polycrystalline 4kW ??? Number of panels: 10-14 ??? Solar panel cost, including installation: ?7000.00 (Actual price ranges from ?5,000 to ?9,000) ??? Estimated annual output: 3600 kWh (South of the UK) ??? Estimated Smart Export Guarantee Tariff: ?50.00 (SEG ???