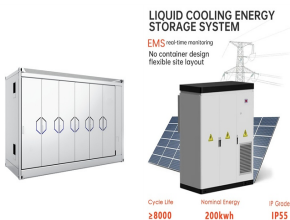


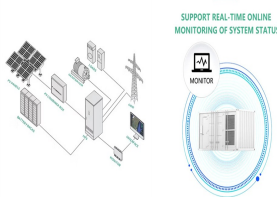
THE PHOTOVOLTAIC PANELS ON THE ROOF HAVE BEEN REMOVED



Roof replacement timing: If a roof replacement is already on your horizon, it's strategic to synchronize this with your solar panel installation. Doing so aligns the lifespan of both components



In recent years, solar panels have become more popular than ever before, with the UK seeing more than 17,000 new solar installations each month so far in 2023. This isn't surprising, given that solar panels can dramatically cut your a?|



Important: If you remove the solar panels they'll no longer be eligible for the FiT scheme or FiT payments. Please also be aware that the panels can't be transferred to another site and be eligible again for the FiT scheme. If you remove the solar panels you must let us a?|



However, it's still worth installing solar panels on a slate roof. The average household will save GBP537 per year on its electricity bills, and break even in 17 years a?? leaving you plenty of time to enjoy the free energy your panels produce. Are there other solar panel options for a a?|



Hi, does anyone have any advice or experience they can offer please regarding removing a solar panel system and selling it on? We have recently moved to a bungalow with these on the roof and we hate them. We are having a new roof so they would need to be removed regardless, the only difference being is that we won't be putting them back.

THE PHOTOVOLTAIC PANELS ON THE ROOF HAVE BEEN REMOVED



Gain expert advice on solar panel removal, when it's necessary, factors to consider, and the process involved. Get reliable solutions for your solar needs. wear and tear on the roof underneath may occur if the panels have a?|



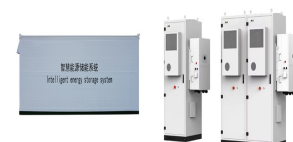
During the most clear-cut step in the process, the solar company sends out experienced technicians to remove the solar panels from your roof. Storage of your solar panels may be necessary if the project is expected to take longer to complete. Once your roof is back in good condition and/or your solar panel system has been repaired, your



Once the tiles have been removed, the installer fits plastic trays on top of the felt and batten of the roof. The next step is much the same as with any other solar array installation, with standard solar panels being laid in the plastic trays, and then wired to the system by an electrician. GSE mounting systems cost around GBP100 per solar



If you have had any ongoing roof issues or it looks likely major roof repairs will be needed then you seriously need to consider replacing your roof before installing solar panels. If your roof is likely to need any major roof repairs in the next 5-10 years then it may be wise to replace the roof before installing solar panels.



The removed tiles are replaced in their original locations after the brackets have been fastened. The roof tiles will be ground or cut to fit around the recently installed brackets in order to guarantee that they sit flush, and that the integrity of the roof is preserved. The roof tiles in the region where the solar panel will be installed

THE PHOTOVOLTAIC PANELS ON THE ROOF HAVE BEEN REMOVED



In this comprehensive guide, we'll dive into the key factors surrounding solar panel removal, including when it's time to remove them, essential considerations during the process, and a step-by-step guide on how a?



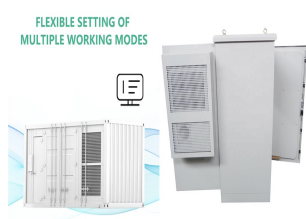
The tiles are removed and the panels are either fitted over a new backing tray or have waterproof strips between the panels to form the roof cladding. "The installers will be responsible for designing the system to make sure that the panels fit on the roof with adequate margins around them and that everything is secure and correctly installed and signed off.



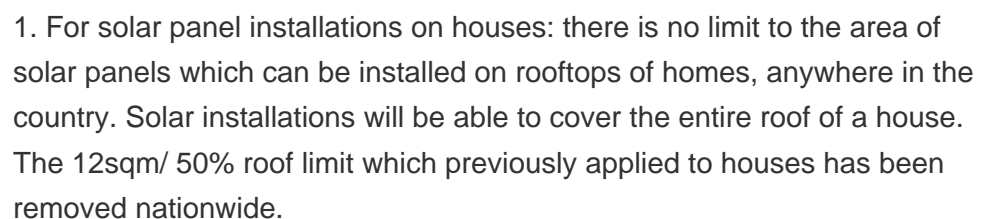
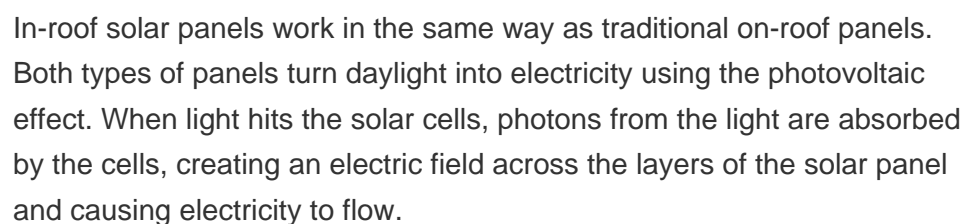
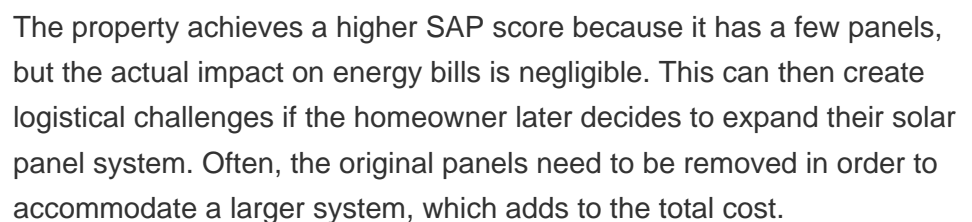
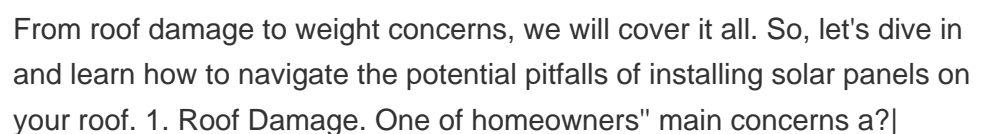
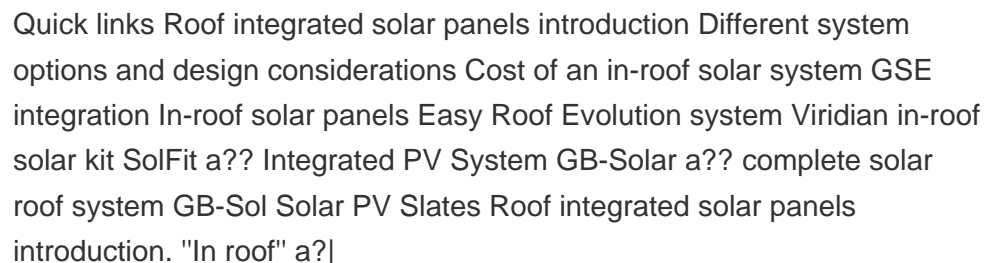
The solar panel installation company will often measure out the layout of the solar panels and begin installing them. Since it is best to drill and install the brackets for the rails into the studs of the rafters, often times they will begin to a?



This inspection is a critical part of the solar panel removal for roof repair process, as it allows professionals to identify and address any underlying issues that may have been concealed by the panels. Common repairs may include replacing damaged shingles, sealing leaks, or addressing structural concerns.



Can I build my own Solar Panel System UK? - DIY Solar; Getting Solar Panel Quotes in the UK 2024; How much Space do I need for Solar Panels? UK Guide 2024; The Smart Export Guarantee (SEG) UK; Solar Panels for New Builds: A UK Guide for 2024; Solar Panels for Schools and Colleges in the UK; How Much Electricity Does a Solar Panel Produce, UK?



THE PHOTOVOLTAIC PANELS ON THE ROOF HAVE BEEN REMOVED



If you are concerned about excess snowfall in winter, you can purchase a solar panel rake that extends around 20 feet into the air and allows you to brush the snow from your panels from the safety



There are now 1.5 million solar panels on homes across the UK. As well as saving you money on energy bills, solar panels can earn you cash. And don't worry, they can still generate electricity on gloomy days, vital when the weather's as dull as dishwater. But they cost an average of GBP7,000, so you



Pigeons have discovered that solar panels provide the ideal nest location as the panels provide protection against the elements. The problem however is, the presence of pigeons on your roof not only looks unsightly, it can also lead to blockages within your guttering thanks to pigeon fouling and nesting material washing down the roof during heavy rainfall.



Are rent-a-roof solar panel schemes a good option? View more links. The Feed-in tariff scheme closed to new applicants in 2019 and has been replaced by the much-less-generous Smart Export Guarantee (SEG) scheme, making it a?



Rayotec can help to remove & reinstall both solar thermal panels & solar PV panels. These panels can be reinstalled on the same roof or a different roof if required. We have our own teams of roofers, PV electricians and solar thermal heating engineers to help with both domestic and commercial projects.

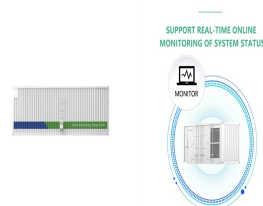
THE PHOTOVOLTAIC PANELS ON THE ROOF HAVE BEEN REMOVED



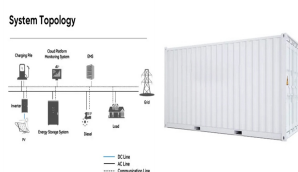
panels cannot protrude more than 1 metre above the plane of the roof. Standalone solar panels. Standalone solar panels are permitted development, provided that they comply with the following conditions: the panel should be sited, so far as is practicable, to minimise the effect on the amenity of the area; only one standalone solar panel is



Like any home improvement project, using the right service provider is essential to a rooftop solar job. For most homeowners, installing solar panels will not result in roof damage as long as your solar installer is a licensed, qualified professional and your roof is in good condition. If you hear of roof damage occurring because of a solar installation, it's likely a?



The flat roof solar panel array that is installed uses the same type of solar panel as a traditional system, but Because a flat roof is more easily accessed it is easier and cheaper to remove and replace the solar panel system when the system needs upgrading or your system fails. Solar panels that have been mounted on flat roofs should

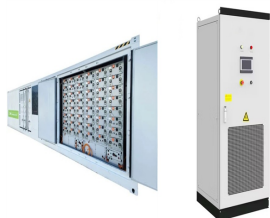


But finding out the answers to the following questions will give you some insight about how effective a solar panel system would be on your roof. Does your roof face the right direction? Once your solar panels have been a?|

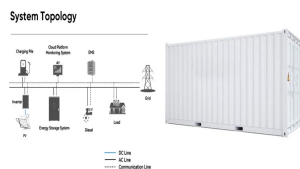


A reporter is concerned about the monitoring of photovoltaic panels and whether all the the text has been edited for clarity, and identifiable details have been removed to ensure anonymity and confidentiality. PV installations: structural aspects which provides advice about the installation of panels on roof structures. Share this page.

THE PHOTOVOLTAIC PANELS ON THE ROOF HAVE BEEN REMOVED



Contact Eco7 today and we can arrange for your panels to be either permanently or temporarily removed by an experienced and professional team, or reinstalled at another location. The system needs to be electrically isolated first to ensure it a?



An electrical conduit is a thick-walled tubing made of metal, plastic, or fiber used to protect and route electrical wires. During your solar energy system installation, the specialist will route the conduit from each solar array to your solar inverter, running either through your attic (if there's available access) or along your roof, and down an exterior wall of your home.



For a temporary solar panel system removal. All wiring remains in place. The inverter needs to be turned off and Isolated but not removed at all. The panels are simply un-plugged and bright to the ground. Usually stacked upright near the house until the roof restoration has been completed and its time for panel reinstallation.