

THE SPEED REQUIREMENT FOR PHOTOVOLTAIC PANELS TO GENERATE ELECTRICITY IS



The average life span of solar PV cells is around 20 years or even more. Solar energy can be used as distributed generation with less or no distribution network because it can be installed where it is to be used. so there is a requirement for energy storage which makes the overall setup expensive. and c represents the speed of light. The



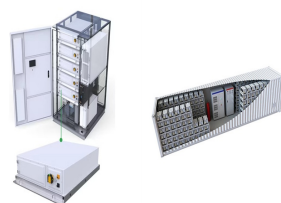
Read our buying advice for solar panels to see how much of your power solar panels could generate in summer. How much electricity does a solar panel produce? Household solar panel systems are usually up to 4kWp in size. That stands for kilowatt "peak" output ??? ie at its most efficient, the system will produce that many kilowatts per hour (kWh).



There are several factors that can impact how much electricity a solar panel is able to generate. These include: Direction and angle of your roof. A solar panel works best when installed on a south-facing roof at a 35-degree ???



How Do Solar Panels Generate Electricity? PV solar panels generate direct current (DC) electricity. With DC electricity, electrons flow in one direction around a circuit. This example shows a battery powering a light bulb. The electrons ???



Photovoltaic cells convert sunlight into electricity. A photovoltaic (PV) cell, commonly called a solar cell, is a nonmechanical device that converts sunlight directly into electricity. Some PV cells can convert artificial light into electricity. Sunlight is composed of photons, or particles of solar energy. These photons contain varying amounts of energy that ???

THE SPEED REQUIREMENT FOR PHOTOVOLTAIC PANELS TO GENERATE ELECTRICITY IS



Today, solar energy is more accessible than ever. According to the International Energy Agency (IEA), solar photovoltaic capacity has grown by 22% annually over the last decade, and costs for solar installations have ???



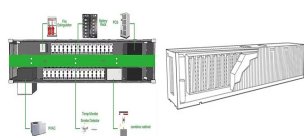
There are two primary ways in which solar panels generate electricity: thermal conversion and photovoltaic effect. Photovoltaic solar panels are much more common than those that utilize thermal conversion, so we'll be focusing on PV ???



3 The perspective of solar energy. Solar energy investments can meet energy targets and environmental protection by reducing carbon emissions while having no detrimental influence on the country's development [32, 34] countries located in the "Sunbelt", there is huge potential for solar energy, where there is a year-round abundance of solar global horizontal ???



According to Solar Energy UK, solar panel performance falls by 0.34 percentage points for every degree that the temperature rises above 25°C. Plus, the longer days and clearer skies mean solar power generates much ???



Use our solar panel calculator to get an idea of how much you could save by installing a solar photovoltaic (PV) system at home. Use the calculator . Based on the information you provide, the solar panel calculator will estimate: What size solar panel system is right for you. How much you could save on your electricity bills.

THE SPEED REQUIREMENT FOR PHOTOVOLTAIC PANELS TO GENERATE ELECTRICITY IS



Solar power is the energy converted from sunlight into usable electricity. Sunlight is harnessed directly through the use of solar panels. Solar panels are made up of transparent photovoltaic (PV) glass as well as PV cells which are responsible for converting sunlight into electricity.



The future land requirements of solar energy obtained for each scenario and region can be put in perspective compared, for example, to the current level of built-up area and agricultural cropland.



The Solar Futures Study is a U.S Department of Energy report that explores the role of solar energy in achieving the goals of a decarbonized grid by 2035 and a decarbonized energy system by 2050. the decarbonization scenarios show cumulative solar deployment of 760 GW???1,000 GW would be required, serving 37%???42% of electricity demand



Solar panels generate electricity during the day. They generate more electricity when the sun shines directly on the solar panels. Figure 1 shows PV generation in watts for a solar PV system on 11 July 2020, when it was sunny throughout ???



3. Imagine a solar panel has a conversion efficiency of 100% i.e. it converts all the solar energy into electrical energy then all you would need is a 1 m 2 solar panel to produce 1000 Watts of electrical energy :).

THE SPEED REQUIREMENT FOR PHOTOVOLTAIC PANELS TO GENERATE ELECTRICITY IS



You can also learn more about how to go solar and the solar energy industry. In addition, you can dive deeper into solar energy and learn about how the U.S. Department of Energy Solar Energy Technologies Office is driving innovative research and development in ???



Solar photovoltaic (PV) power generation is the process of converting energy from the sun into electricity using solar panels. Solar panels, also called PV panels, are combined into arrays in a PV system. PV systems can also be installed in grid-connected or off-grid (stand-alone) configurations.



PV conversion efficiency is the percentage of solar energy that is converted to electricity. 7 Though the average efficiency of solar panels available today is 21% 8, One study showed that amorphous silicon PVs generate 3 to 6 times more energy than is required to produce them. 10; PV Technology and Impacts PV cells.



Another benefit of using solar energy is cost savings over time: while initial installation costs may seem high at first glance, long-term savings can be substantial when compared to traditional electricity sources ??? especially if you live in areas where grid electricity costs are particularly high due to expensive overhead infrastructure requirements like ???



Fortunately, we've got you covered with our solar panel output calculator. This tool will instantly provide you with the amount of electricity that your chosen panels will produce in your region, and the roof space that they'll take up. Just choose your region, the number of solar panels you're looking to get, and the panels' peak power

THE SPEED REQUIREMENT FOR PHOTOVOLTAIC PANELS TO GENERATE ELECTRICITY IS



When the sun shines on a solar panel, solar energy is absorbed by individual PV cells. These cells are made from layers of semi-conducting material, most commonly silicon. The PV cells produce an electrical charge as they become energised by the sunlight. The stronger the sunshine, the more electricity generated.



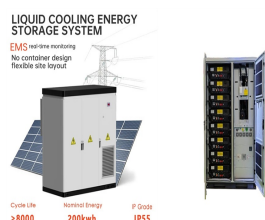
Solar systems are essentially any combination of solar panels, the hardware needed to help the energy flow through the panels, the hardware needed to keep the system on the roof, and inverters, which change the direct current (DC) electricity generated by the panels, to alternating current (AC). How does solar energy work in a photovoltaic system?



The Effect of Solar Energy Wavelength on Electron Energy. If the speed of light is c , then $f = c/w$, and Planck's law can be written: $(E = \frac{hc}{w})$ lacks the energy to produce electricity from a solar cell. Any photon with an energy greater than 1.11 eV can dislodge an electron from a silicon atom and send it into the conduction band



How much electricity does a solar panel produce? Household solar panel systems are usually up to 4kWp in size. That stands for kilowatt "peak" output ??? ie at its most efficient, the system will produce that many kilowatts per ???



To answer this, we need to look at how much energy solar panels can generate. Most home panels can each produce between 250 and 400 Watts per hour. According to the Renewable Energy Hub, domestic solar panel systems usually range in size from around 1 kW to 5 kW. Allowing for some cloudier days, and some lost power, a 5 kW system can

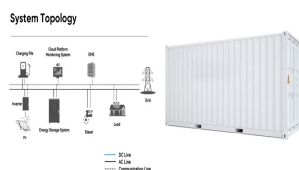
THE SPEED REQUIREMENT FOR PHOTOVOLTAIC PANELS TO GENERATE ELECTRICITY IS



The mastery of photovoltaic energy conversion has greatly improved our ability to use solar energy for electricity. This method shows our skill in getting power in a sustainable way. Thanks to constant improvement, turning solar energy into electricity has gotten more efficient, meeting our increasing energy needs. Solar panels are key in this



Rated Power measures the maximum amount of electricity a solar panel can produce. EcoFlow's PV panel options range from 60W all the way up to 400W. However, it's important to note that a solar panel rarely reaches its full potential for electricity generation. Rated power is determined in a laboratory under Standard Test Conditions.



Under typical UK conditions, 1m² of PV panel will produce around 100kWh electricity per year, so it would take around 2.5 years to "pay back" the energy cost of the panel. PV panels have an expected life of least 25 to 30 years, so ???



Hence, PV panel with wind speed can generate a higher output power PV based electricity generation system is divided into two majors, which are stand-alone PV system and grid-connected PV



Understanding your energy requirements, solar panel efficiency, how sunlight affects generation, and the perks and pitfalls of your roof space are all necessary considerations when choosing the right size solar PV system for your property in the UK. The measure of how much sunlight a solar panel can convert into electricity is referred to