

# TIGER LEAPING GORGE HIGH DAM ENERGY STORAGE



Tiger Leaping Gorge is regarded as the most dangerous section of the Yangtze River. Its average flow rate can reach 7,800 m<sup>3</sup>/s (3 Olympic swimming pools per second!). With that rate of flow, the river waters would fill West Lake (capacity 14,000,000 m<sup>3</sup>) in half an hour.. West Lake stretches over 6.5 square kilometers (2 1/2 square miles), making it the largest landscape garden water a?|



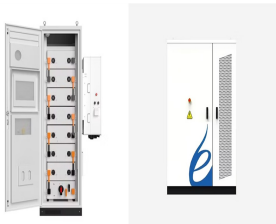
China has some scenic views to boast of, but the Tiger Leaping Gorge hike is home to some of the best. Turquoise waters, limestone cliffs, snow-peaked mountains, fluffy clouds and glorious light combine to make your jaw drop for the majority of this trek. China's Tiger Leaping Gorge is hailed as one of the world's best multi-day hikes.



The Tiger Leaping Gorge () is a popular tourist destination for all types of travellers located between Lijiang () and Shangri-la. Menu Close. The powerful drop in height over a short distance propels the river flowing through the Tiger Leaping Gorge. 1800m high at the start of the gorge; 1600m high at the end; and;



The Baidu online encyclopaedia explains why the name change: "In order to avoid public doubts, the Tiger Leaping Gorge Hydropower Station was renamed Longpan Hydropower Station." Of the 17 dams on the Jinsha, already built or planned, Tiger Leaping Gorge/ Longpan is planned to generate 4000 megawatts of electricity, a huge amount.



The Itinerary: Tiger Leaping Gorge Hike. We stayed in Lijiang, China's biggest tourist trap for one night at the Mama Naxi Guesthouse as it was a 11-minute walk to the bus station, and logistics-wise it was easier for us to get to the bus station.. We even had someone from the guest house helped us with our luggage and arranging the tickets for the bus ride.

# TIGER LEAPING GORGE HIGH DAM ENERGY STORAGE



Trekking Tiger Leaping Gorge requires proper preparation and planning to ensure a safe and enjoyable experience. Here are some helpful tips to consider before embarking on the trek: Physical fitness: The Tiger Leaping Gorge trek can be physically challenging, especially if you choose the High Trail. It's important to be in good physical



Tiger Leaping Gorge is located between Lijiang and Shangri-La. Check its location, elevation, facts, best time to visit, hiking trails, map, know how to visit Tiger Leaping Gorge. For those who are hike down from Zhang's Guesthouse to the Middle Gorge and transfer back via high lappers, it takes about 3 hours all the way. For the road is



The Gorge consists of three parts: the Upper Gorge, Middle Gorge, and Lower Gorge. The first two are popular for hiking. The Upper Gorge (mainly from Qiaotou to Tina's) is easier than the Middle Gorge. Tiger Leaping Gorge hike is generally suitable for energetic and adventurous hikers and people with a good level of fitness. The longer/steeper hikes are not recommended for kids a?]



The Tiger Leaping Gorge trek (; Pinyin: HC? Tiao Xia), near Lijiang in Yunnan, is one of the finest treks through some of the most naturally beautiful and diverse landscapes China has to offer. The trail runs high on the northern side of the gorge passing through quiet villages, shady forest, blustery precipice and verdant terraced farmland.



The decision to spare Tiger Leaping Gorge and the homes and livelihoods of about 100,000 (mainly local Naxi) residents only shifted the dam problem further upstream, but it did preserve the High Trail, one of Asia's must-do mini-treks.

# TIGER LEAPING GORGE HIGH DAM ENERGY STORAGE



The Tiger Leaping Gorge was given the title of UNESCO World Heritage Site in 2003 with it being part of the Three Parallel Rivers of Yunnan Protected Areas addition the Tiger Leaping Gorge is one of the deepest gorges in the entire world being around 3,790 meters deep if you're counting from the peak of the mountain range.. Looming over the Gorge, the a?|



After arriving in Lijiang, you will need to catch a bus to the Tiger Leaping Gorge. The bus from Lijiang to the Tiger Leaping Gorge takes about 2 hours. But don't rush! Definitely stop in beautiful Lijiang for a few days, either before or after hiking the gorge. Lijiang does have a domestic airport, but flights are much more expensive than those to Kunming.



Tiger Leaping Gorge a?? Photos by Kristen Ng. This article will discuss my two day hiking experience on the Tiger Leaping Gorge (, HC?tiao Xia) during the summer tourist season, setting out from the tourist mecca of Lijiang, staying at a guesthouse on the gorge and returning back to the city. Suggested Itinerary. Day 1. Lijiang to



Tiger Leaping Gorge Geography and Geology. Tiger Leaping Gorge measures roughly 9.3 mi (15 km) in length. It also boasts a maximum depth of roughly 12,434 ft (3,790 m). The width of both the river and the gorge varies greatly. At one point, this marvel of Nature narrows to a width of only 82 ft (35 m).



The hike is tough and bringing additional luggage you don't really need is a waste of energy. How To Complete The Tiger Leaping Gorge Hike Day 1: Conquer the 28 bends. The Tiger Leaping Gorge hike runs high on the northern side of the gorge with beautiful views over the Jinsha River. While hiking you will spot the snow-covered peaks of

# TIGER LEAPING GORGE HIGH DAM ENERGY STORAGE



Trail distance: 30km following the high trail; Hiking duration: 7 hours to about 3 days; The indigenous Naxi people are the primary inhabitants of the gorge; The upper trail is around 22 kilometers(14 mi) in length Tiger Leaping Gorge weather and rainfall throughout the year. The best time to visit the Tiger Leaping Gorge is in September



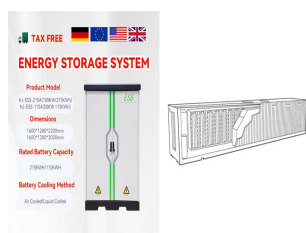
None would be as effective - or as politically controversial - as the dam proposed at Tiger Leaping Gorge. Towering 278 metres (912ft) high with a reservoir stretching back more than 120 miles, a?



Hiking the Upper Trail. To get to the Upper Trail from Qiaotou on foot, carry on past Jane's Guest House and also past a large school; you'll see a sign which reads Tiger Leaping Gorge Hiking High Way Thus Into, and from here it takes around 45 minutes to get onto the trail itself. To hike the Upper Trail, it is best to take around 3 days.



On a visit to Tiger Leaping Gorge, one can enjoy deep-incised river gorges, luxuriant forests, towering snow-clad mountains, and glaciers of the UNESCO site. 10. Home to the Naxi Matriarchal minority group. Tiger Leaping Gorge is inhabited by the indigenous Naxi people, who live in tiny enclaves scattered throughout the area.



The Tiger Leaping Gorge trek (; Pinyin: Hu Tiao Xia), near Lijiang in Yunnan, is one of the finest treks through some of the most naturally beautiful and diverse landscapes China has to offer. The trail runs high on the northern side of the gorge passing through quiet villages, shady forest, blustery precipice and verdant terraced farmland.

# TIGER LEAPING GORGE HIGH DAM ENERGY STORAGE



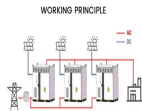
Tiger Leaping Gorge (), located in the upper reaches of the Jinsha River in Yunnan Province, China, is divided into three sections: Upper Tiger Leaping, Middle Tiger Leaping, and Lower Tiger Leaping. The gorge stretches for 17 kilometers, with a winding road of 25 kilometers. With a vertical drop of over 3,900 meters, it is one of the deepest gorges?



Here's a little preview of what to expect when hiking Tiger Leaping Gorge. Options for Visiting. There are a few options for visiting Tiger Leaping Gorge. The easy way out is taking a bus to Tina's Guesthouse. You simply walk down to get a closeup view of the river and the point where a tiger supposedly leaped over it.



Despite its bombastic name, the Tiger Leaping Gorge hike is one of the more popular treks in Yunnan, China mainly due to the spectacular views to be experienced along the moderately-difficult trek. You don't need to be incredibly fit for hiking Tiger Leaping Gorge, which renders it appealing even to novice trekkers or to those who normally favour couches over a?



The gorge has been carved out by the raging rapids of the Jinsha River () a?? the main headwaters of the Yangtze. As it pours through the gorge, the Jinsha is flanked by the imposing massifs Jade Dragon () and Haba () snow mountains. Both of these ranges soar to more than 5,000 meters above sea level and provide the extraordinary vistas a?



20kW / 50kWh  
Customizable

For those seeking an adrenaline rush, rafting in the Jinsha River is an excellent activity to consider. The Jinsha River, which runs through Tiger Leaping Gorge, offers some of the best rapids in China, ranging from class II to class V. Rafting is available year-round, but the best time to go is from May to October when the water levels are high.

# TIGER LEAPING GORGE HIGH DAM ENERGY STORAGE



Experts believe that it is feasible to build a hydroelectric dam at Tiger Leaping Gorge. With a length of 16 kilometers, Tiger Leaping Gorge is located between the 5,596-meter-high Jade Dragon Snow Mountain and the 5,396-meter-high Haba Snow Mountain. There are 2 ways to tour the gorge, including by bus and on foot.



General Information On Tiger Leaping Gorge. The Gorge runs for about 15km in length and at his highest point has a maximum depth of 3790m. The people that live in the region are primarily of the Naxi (or Nashi) ethnic minority group, who can only be found in this particular area near the base of the Himalaya.



At the Tiger Leaping Gorge a 276-metre-high dam had been proposed. This would be on the Jinsha (Yangtze) River at the gorge but the plan was shelved since 2004 following a rare public outcry. People's Bank and National Energy Board issued a long list of projects to proceed, including many dams on Tibetan rivers, the biggest being Tiger



Watch Your Step: The trails in Middle Tiger Leaping Gorge can be steep, uneven, and sometimes slippery. Always watch your step, use hiking poles for stability, and wear proper footwear with good traction. Be Mindful of Altitude: Middle Tiger Leaping Gorge reaches high altitudes, and altitude sickness is a possibility. Take your time, acclimate