

TRACTOR FLYWHEEL ENERGY STORAGE



What is a flywheel energy storage system? First-generation flywheel energy-storage systems use a large steel flywheel rotating on mechanical bearings. Newer systems use carbon-fiber composite rotors that have a higher tensile strength than steel and can store much more energy for the same mass. To reduce friction, magnetic bearings are sometimes used instead of mechanical bearings.



Could flywheels be the future of energy storage? Flywheels, one of the earliest forms of energy storage, could play a significant role in the transformation of the electrical power system into one that is fully sustainable yet low cost.



What are the advantages of a flywheel versus a conventional energy storage system? When the flywheel is weighed up against conventional energy storage systems, it has many advantages, which include high power, availability of output directly in mechanical form, fewer environmental problems, and higher efficiency.



How do fly wheels store energy? Fly wheels store energy in mechanical rotational energy to be then converted into the required power form when required. Energy storage is a vital component of any power system, as the stored energy can be used to offset inconsistencies in the power delivery system.



How much energy does a flywheel store? Indeed, the development of high strength, low-density carbon fiber composites (CFCs) in the 1970s generated renewed interest in flywheel energy storage. Based on design strengths typically used in commercial flywheels, $I^2 \text{ max} / I^2$ is around 600 kNm/kg for CFC, whereas for wrought flywheel steels, it is around 75 kNm/kg.

TRACTOR FLYWHEEL ENERGY STORAGE



Does a flywheel energy-storage system improve dynamic stability? Wang, L.; Yu, J.-Y.; Chen, Y.-T. Dynamic stability improvement of an integrated offshore wind and marine-current farm using a flywheel energy-storage system. IET Renew.



On a high level, flywheel energy storage systems have two major components: a rotor (i.e., flywheel) and an electric motor. These systems work by having the electric motor accelerate the rotor to high speeds, effectively converting the original electrical energy into a stored form of rotational energy (i.e., angular momentum).



NASA G2. i 1/4 ?i 1/4 ? Flywheel energy storage,i 1/4 ?FESi 1/4 ?,i 1/4 ?i 1/4 ?,a?? ,i 1/4 ?,



This review presents a detailed summary of the latest technologies used in flywheel energy storage systems (FESS). This paper covers the types of technologies and systems employed within FESS, the range of materials used in the production of FESS, and the reasons for the use of these materials. Furthermore, this paper provides an overview of the a?|



I've been looking into flywheel energy storage as a possible alternative to various types of batteries and other means such as compressed air and hydrogen. I've come across some interesting facts and this may be more practical than I first thought.



Thanks to the unique advantages such as long life cycles, high power density and quality, and minimal environmental impact, the flywheel/kinetic energy storage system (FESS) is gaining steam recently.

TRACTOR FLYWHEEL ENERGY STORAGE



Flywheels are made using a wide variety of materials; based on the applications. C.I. flywheels are utilized into older steam engines. Flywheels utilized in automobiles are produced by C.I., st., or al. Flywheels made from composite or high-quality steel were designed in anticipation of their use in systems for motor energy storage and stoppage. high-quality steel a?|



Beacon Power is building the world's largest flywheel energy storage system in Stephentown, New York. The 20-megawatt system marks a milestone in flywheel energy storage technology, as similar systems have only been applied in testing and small-scale applications. The system utilizes 200 carbon fiber flywheels levitated in a vacuum chamber.



For a 348, that would be $35\text{hp} / .857 = 40.8$ hp worth of flywheel power. If it were a 1:1 ratio PTO/flywheel, you'd need 41ish hp tractor to do the same work. The flywheel being an energy storage piece and as long as it's up to speed - you'll get the full potential of the baler. Recovery time is the hp driver.



A review of energy storage types, applications and recent developments. S. Koochi-Fayegh, M.A. Rosen, in Journal of Energy Storage, 2020 2.4 Flywheel energy storage. Flywheel energy storage, also known as kinetic energy storage, is a form of mechanical energy storage that is a suitable to achieve the smooth operation of machines and to provide high power and energy a?|



Some of the key advantages of flywheel energy storage are low maintenance, long life (some flywheels are capable of well over 100,000 full depth of discharge cycles and the newest configurations are capable of even more than that, greater than 175,000 full depth of discharge cycles), and negligible environmental impact.

TRACTOR FLYWHEEL ENERGY STORAGE



This design provides the reliability guarantee for the innovative application of the AMB-supported energy storage flywheel battery in electric tractors. Export citation and abstract BibTeX RIS. Faraji F, Majazi A et al 2017 A comprehensive review of flywheel energy storage system technology Renewable Sustainable Energy Rev. 67 477-490



Today, flywheel energy storage systems are used for ride-through energy for a variety of demanding applications surpassing chemical batteries. A flywheel system stores energy mechanically in the form of kinetic energy by spinning a mass at high speed. Electrical inputs spin the flywheel rotor and keep it spinning until called upon to release



How Flywheel Energy Storage Systems Work. Flywheel energy storage systems (FESS) employ kinetic energy stored in a rotating mass with very low frictional losses. Electric energy input accelerates the mass to speed via an integrated motor-generator. The energy is discharged by drawing down the kinetic energy using the same motor-generator.



Flywheel energy storage systems are feasible for short-duration applications, which are crucial for the reliability of an electrical grid with large renewable energy penetration. Flywheel energy storage system use is increasing, which has encouraged research in design improvement, performance optimization, and cost analysis.



The core element of a flywheel consists of a rotating mass, typically axisymmetric, which stores rotary kinetic energy E according to (Equation 1) $E = \frac{1}{2} I \omega^2$ [J], where E is the stored kinetic energy, I is the flywheel moment of inertia [kgm²], and ω is the angular speed [rad/s]. In order to facilitate storage and extraction of electrical energy, the rotor a?)



One energy storage technology now arousing great interest is the flywheel energy storage systems (FESS), since this technology can offer many advantages as an energy storage solution over the

TRACTOR FLYWHEEL ENERGY STORAGE



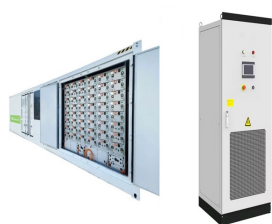
A flywheel energy storage system employed by NASA (Reference: wikipedia) How Flywheel Energy Storage Systems Work? Flywheel energy storage systems employ kinetic energy stored in a rotating mass to store energy with minimal frictional losses. An integrated motor/generator uses electric energy to propel the mass to speed. Using the same



Energy storage flywheel systems are mechanical devices that typically utilize an electrical machine (motor/generator unit) to convert electrical energy in mechanical energy and vice versa. Energy is stored in a fast-rotating mass known as the flywheel rotor. The rotor is subject to high centripetal forces requiring careful design, analysis, and fabrication to ensure the safe a?|



Falcon Flywheels is an early-stage startup developing flywheel energy storage for electricity grids around the world. The rapid fluctuation of wind and solar power with demand for electricity creates a need for energy storage. Flywheels are an ancient concept, storing energy in the momentum of a spinning wheel.



An overview of system components for a flywheel energy storage system. Fig. 2. A typical flywheel energy storage system [11], which includes a flywheel/rotor, an electric machine, bearings, and power electronics. Fig. 3. The Beacon Power Flywheel [12], which includes a composite rotor and an electric machine, is designed for frequency



Flywheel energy storage (FES) is a technology that stores kinetic energy through rotational motion. The stored energy can be used to generate electricity when needed. Flywheels have been used for centuries, but modern FES systems use advanced materials and design techniques to achieve higher efficiency, longer life, and lower maintenance costs.

TRACTOR FLYWHEEL ENERGY STORAGE



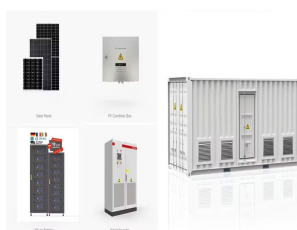
The flywheel energy storage system (FESS) offers a fast dynamic response, high power and energy densities, high efficiency, good reliability, long lifetime and low maintenance requirements, and is



OverviewMain componentsPhysical characteristicsApplicationsComparison to electric batteriesSee alsoFurther readingExternal links



The cost invested in the storage of energy can be levied off in many ways such as (1) by charging consumers for energy consumed; (2) increased profit from more energy produced; (3) income increased by improved assistance; (4) reduced charge of demand; (5) control over losses, and (6) more revenue to be collected from renewable sources of energy



In this paper, state-of-the-art and future opportunities for flywheel energy storage systems are reviewed. The FESS technology is an interdisciplinary, complex subject that a?



The main components of a typical flywheel. A typical system consists of a flywheel supported by rolling-element bearing connected to a motora??generator.The flywheel and sometimes motora??generator may be enclosed in a vacuum chamber to reduce friction and energy loss.. First-generation flywheel energy-storage systems use a large steel flywheel rotating on mechanical a?

TRACTOR FLYWHEEL ENERGY STORAGE



Flywheel Energy Storage System (FESS) Revterra Kinetic Stabilizer Save money, stop outages and interruptions, and overcome grid limitations. Sized to Meet Even the Largest of Projects. Our industrial-scale modules provide 2 MW of power and can store up to 100 kWh of energy each, and can be combined to meet a project of any scale.



The flywheel energy storage system (FESS) offers a fast dynamic response, high power and energy densities, high efficiency, good reliability, long lifetime and low maintenance requirements, and is particularly suitable for applications where high power for short-time bursts is demanded. FESS is gaining increasing attention and is regarded as a