

TRUSS SOLAR PANEL INSTALLATION



Before installing solar panels, evaluate the condition of your metal roof. If it's nearing the end of its lifespan, consider replacing or renovating it before the solar panel installation. Maintenance. Though metal roofs require minimal maintenance, periodic inspections are vital. Check for any signs of corrosion, especially in coastal



Liz Truss opposes the installation of solar panels on productive agricultural lands, Downing Street has said, amid reports that ministers are seeking to restrict the development of solar projects



The short answer is most of the time yes, but it depends. In an Existing Home If you're already living in a home that has roof trusses and no solar panels, the added weight of the solar panels won't have been considered when the trusses were designed. This doesn't mean they won't be able to take the weight???it just mea



Hybrid mounting systems combine elements of both ballasted and penetrating solutions, providing a balanced approach to solar panel installation. Benefits: Versatility: Suitable for different roof types and conditions, hybrid systems offer flexibility in installation.



Post-Truss Canopy Ground Mount Installations. If you and your customer have selected a Post-Truss solar canopy, this model will need to be mounted at ground level using sturdy concrete footings. The process of ???

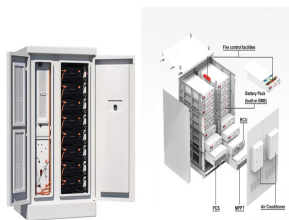


Solar panels are now an option for most homes. According to the Solar Energy Industries Association, more than 2 million PV installs are in the USA. The rapid growth is due to the many benefits these units bring. PV and solar panels help reduce your energy bills and combat the emission of

TRUSS SOLAR PANEL INSTALLATION

greenhouse gases.

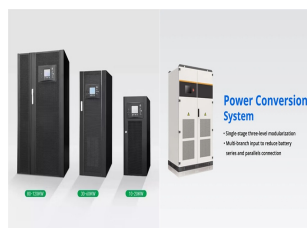
TRUSS SOLAR PANEL INSTALLATION



The best angle for solar panels in the UK is about 40 degrees from horizontal. This varies slightly around the country, but not by much. A 2019 study from York University found that the optimum angle in Yorkshire is 39 degrees, and as you'll see in the section below, there's very little regional variance across the rest of the UK.



The way a solar pv system is installed is as important as the type of panel and installer that you choose. they were not designed to take the additional weight of solar panels so anchors must be installed on every truss under the mounting rails in order to spread the load over the whole roof structure. Far too many installers fix to every



November Solar News: China's reduction in photovoltaic export tax rebates may lead to an increase in module prices, with current solar panel prices in Europe below 6 cents per watt. France plans to install about 1.35 GW of solar capacity in Q3 2024, while Trump's upcoming tariff hikes could trigger a surge in imports and rising transport costs.



Western Wood Truss Association of Alberta 212, 3916-64th Ave. S.E., Calgary, Alberta T2C 2B4 Ph. (403) 279-3385, Fax (403) 279-3327 e-mail: dave@wwta.ab.ca Western Wood Truss Association of Alberta Position Statement ??? Solar Panel Installation on Wood Roof Trusses March 2018 Photovoltaic solar panels continue to grow in popularity across Alberta.



This document presents the design and analysis of the superstructure section of a steel truss bridge using STAAD Pro software. The project aims to design a sustainable bridge by installing solar panels on the structure to generate electricity for bridge lighting. The design will consider loads like dead loads, live loads, wind loads and seismic loads. Connections between ???

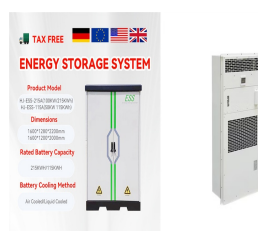
TRUSS SOLAR PANEL INSTALLATION



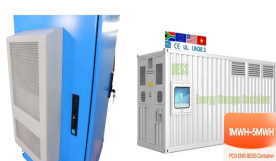
(R) Solar Installation Products stop to solar panel with forces equalling channel nut capacity. *patent pending Unistrut components are available in a variety of materials and finishes, including Pre-Galvanized (PG), Hot-Dipped Galvanized (HG), Stainless Steel (SS), Black Anodized and Chord of Roof Truss P1000T (typical) P1000T



I did my own 30 panel installation and a friends also, in the process I struggled over finding the center of the rafters. I designed a tool that attaches to the rafter in the attic and a "window" that floats on the roof showing the exact center of the rafter.



ASCE 7 Guidelines. The American Society of Civil Engineers (ASCE) provides guidelines for the structural design of solar panel installations through their publication, ASCE 7 1. These guidelines cover the essential factors that influence solar panel installations, such as wind loads, snow loads, and dead loads, to ensure the safe and efficient operation of these ???



solar installation. With the advent of the solar panel industry and historical government incentives around "green energy" and "net-zero" construction, solar panel installations on truss-based roof systems have increased in popularity over the past decade. This has generated many industry discussions around requirements for retrofitting



Additional weight of the solar panel systems (typically 5.0 PSF) not accounted for in the original truss designs (which are typically designed to maximum limits, with no redundancy for additional loads) Possible wind load considerations and adverse effects on the roof system due to wind interacting with the solar panel assemblies

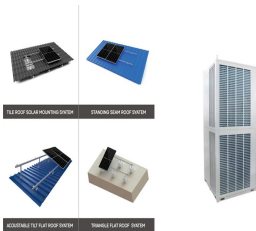
TRUSS SOLAR PANEL INSTALLATION



intended for the attachment of solar panels. c. Scabs must be fastened to the same side of the truss chords under the solar panel roof plane. D. Solar System Installers a. Solar system installers are required to abide by the design restrictions of Solar Ready homes built in accordance with this document, including



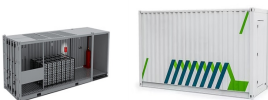
Handy click system. This smart solar panel mounting system consists of a handy hook-and-click system, meaning you no longer need to drill into the roof structure. Truss hook (alternative): install easily by screwing directly onto the roof structure. The hook is infinitely adjustable in height and fits all common roof tile/panel combinations



An average system would include around 38 solar panels (15kWp) with an installation area of 86m². This will cost anywhere from ???900,000 ??? ???1,260,000 because of the higher number of panels and larger installation area. For extremely large houses, an installation can go up to 75 solar panels (30kWp) and cost as high as ???1,800,000.



To connect your solar panel system to the electrical grid and benefit from the Smart Export Guarantee (SEG), you will need to speak with your local District Network Operator (DNO). If your solar panel installation involves work on a shared or party wall, you may need to comply with the Party Wall Act. This might require notifying your neighbor



Going to be performing a DIY install soon, getting ready, having some ideas about locating trusses without making a billion holes in the roof or tapping just the edge and having the bolt come through the side of the truss/rafter. Id love to hear tips/tricks and life hacks as to how you feel is the best way to locate the

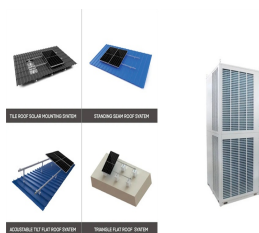


??? Solar Panels must be secured to Truss TC scabs only, max 4"-0" O/C. ??? Truss Design Drawing must show SR Chord for Solar Panels. ??? Shop install TC Scab with size and fasteners as per TPIC #7 5.A. and site specific Point Loads. ??? Winnipeg Trusses, SL = 416 lb, DL = 128 lb,

TRUSS SOLAR PANEL INSTALLATION

???

TRUSS SOLAR PANEL INSTALLATION



We've engineered the optimal solar foundation, reducing subsurface risk and eliminating predrill found in the conventional pile system. Our innovative approach unlocks millions in value for the solar industry. Ojjo's Earth Truss??? System does more with less. The strong axes of the truss structure efficiently resist loads and minimize



If you're considering installing a residential or commercial solar panel system, you might wonder if your roof type is appropriate for a solar installation. The good news is that solar panels can be installed on just about any roof type, but the installation process and mounting hardware might vary from material to material.



It's no secret that solar energy adoption is on the rise. While solar energy already powers 4% of America's homes, even more homeowners are looking to adopt this renewable resource to save money and live more sustainably.. A Pew Research Center study found that 1 in 4 homeowners plan to install solar panels in the next five years. If you're one of ???



The installation of solar panels primarily falls within the category of "Installation of a Controlled Service or Fitting"; additionally it will 9m span) will not overstress truss members or their connector plates to any significant degree. Hence, an "allowed" installation of ???



After installation, regularly check the condition of your solar panels and roof. Routine maintenance can prevent potential issues and ensure your solar system operates efficiently. Conclusion. Installing solar panels on roof trusses is not only feasible but can also be an effective way to harness solar energy and enhance your home's



For example, ASCE 7-16 now clearly states that the weight of solar panels and their support are to be considered as dead loads [1], roof live loads need not be applied to areas covered by solar panels under a certain spacing or height [2], and seismic design is based on already established

TRUSS SOLAR PANEL INSTALLATION

principles in section 13.3 for non-structural component design [3].

TRUSS SOLAR PANEL INSTALLATION



Solar panel installation is a great way to save money on your electricity bill or reduce your carbon footprint. The process is relatively simple and there are a number of rebates and incentives available to help offset the cost. Solar panels typically last for 20-25 years, so they provide a long-term investment.



Start here for Solar Ready Truss Design. That's all for this post. I hope it helps guide your solar PV installation. Solar should enhance your home energetically, aesthetically, financially, and physically, so it's important that things be done correctly, without cutting corners. Please be sure to contact me with any questions or comments