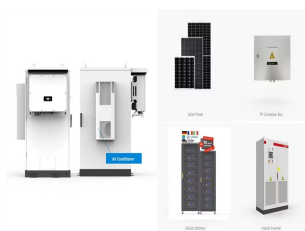
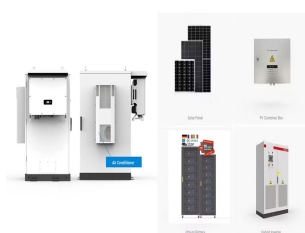


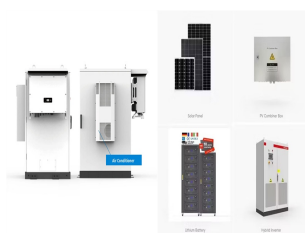
TYPE 1 ENERGY STORAGE POWER STATION



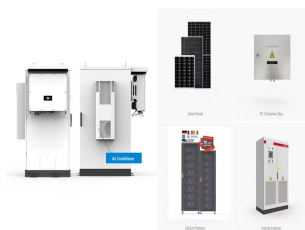
Which energy storage power station successfully transmitted power?
China's largest single station-type electrochemical energy storage power station Ningde Xiapu energy storage power station(Phase I) successfully transmitted power. China Energy Storage Alliance On November 16,Fujian GW-level Ningde Xiapu Energy Storage Power Station (Phase I) of State Grid Times successfully transmitted power.



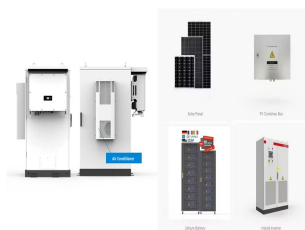
What is a battery energy storage system (BESS)? A battery energy storage system (BESS) or battery storage power station is a type of energy storage technology that uses a group of batteries to store electrical energy.



What is a battery energy storage system? Battery energy storage systems are generally designed to be able to output at their full rated power for several hours. Battery storage can be used for short-term peak power and ancillary services,such as providing operating reserve and frequency control to minimize the chance of power outages.

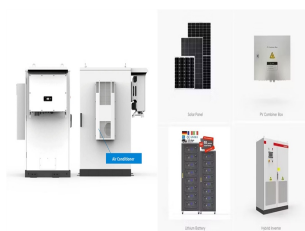


What is a battery storage power plant? Battery storage power plants and uninterruptible power supplies (UPS) are comparable in technology and function. However, battery storage power plants are larger. For safety and security, the actual batteries are housed in their own structures, like warehouses or containers.

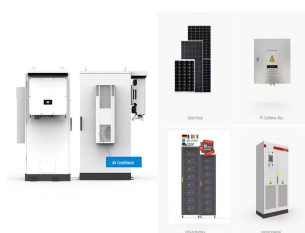


Can energy storage power stations be adapted to new energy sources? Through the incorporation of various aforementioned perspectives,the proposed system can be appropriately adaptedto new power systems for a myriad of new energy sources in the future. Table 2. Comparative analysis of energy storage power stations with different structural types. storage mechanism; ensures privacy protection.

TYPE 1 ENERGY STORAGE POWER STATION



What is a flexible energy storage power station (fesps)? Firstly, this paper proposes the concept of a flexible energy storage power station (FESPS) on the basis of an energy-sharing concept, which offers the dual functions of power flow regulation and energy storage. Moreover, the real-time application scenarios, operation, and implementation process for the FESPS have been analyzed herein.



A power station, also referred to as a power plant and sometimes generating station or generating plant, is an industrial facility for the generation of electric power. Power stations are generally connected to an electrical grid. Many power stations contain one or more generators, rotating machine that converts mechanical power into three-phase electric power.



Abstract: In order to improve the rationality of power distribution of multi-type new energy storage system, an internal power distribution strategy of multi-type energy storage power station ???



GW Qingyuan pumped storage hydroelectric power plant is located in the Guangdong province of China. The power plant is owned by CSG Power Generation Company, a group company of China Southern Power Grid. It was developed as part of China's Eleventh Five-Year Plan and serves as a key energy security project for the Guangdong ???



To effectively address the requirements of the provincial power system pertaining to peak regulation, frequency regulation, and voltage regulation, this paper constructs a new energy storage regulation capability index system, as shown in Fig. 1. The index system considers the index of peak regulation, frequency regulation and voltage regulation at the decision ???

TYPE 1 ENERGY STORAGE POWER STATION



For the optimal power distribution problem of battery energy storage power stations containing multiple energy storage units, a grouping control strategy considering the wind and solar power generation trend is proposed. Firstly, a state of charge (SOC) consistency algorithm based on multi-agent is proposed. The adaptive power distribution among the units ???



It is estimated that the station can export 1.2 million kilowatt-hours of green power per day. An energy storage station plays a key role in building new-type power systems and supporting realization of China's "dual carbon" goals of peaking carbon dioxide before 2030 and reaching carbon neutrality before 2060.



Three Gorges Dam in China, currently the largest hydroelectric power station, and the largest power-producing body ever built, at 22,500 MW. This article lists the largest power stations in the world, the ten overall and the five of each type, in terms of installed electrical capacity. Non-renewable power stations are those that run on coal, fuel oils, nuclear fuel, natural gas, oil ???

Commercial and Industrial ESS

Air Cooling / Liquid Cooling

• Scalable Energy Solution

• Renewable Energy Integration

• Modular Design for Flexible Expansion



MW Dalian Flow Battery Energy Storage Peak-shaving Power Station, with the largest power and capacity in the world so far, was connected to the grid in Dalian, China, on September 29, and it will be put into operation in mid-October. This energy storage project is supported technically by Prof. LI Xianfeng's group from the Dalian Institute of Chemical Physics (DICP) of ???



Pumped storage hydropower (PSH) is a type of hydroelectric energy storage. It is a configuration of two water reservoirs at different elevations that can generate power as water moves down from one to the other (discharge), passing through a turbine.

TYPE 1 ENERGY STORAGE POWER STATION



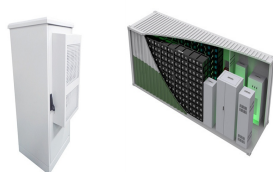
(Yicai) July 1 -- China Datang said the first phase of its sodium-ion battery new-type energy storage power station project in Qianjiang, Hubei province, the largest such project in the world, has become operational. the general manager of Chinese new energy and battery giant BYD's energy storage and new-type battery business division



On May 8 th, 2020, the Fujian Energy Regulatory Office issued the first power business license (power generation type) for the independent storage power station of Jinjiang Mintou Power Storage Technology Co., Ltd. of Fujian Investment Group, marking that Jinjiang Tonglin Storage Power Station, the largest lithium-ion battery energy storage station regarding power ???



The new Summit pumped storage power plant in Ohio, USA, has a planned installed capacity of 1.5x10³ MW, and its lower reservoir uses an abandoned mine [91]. Commonly this type of energy storage is used for large-scale energy storage applications. One of the main challenges for storing energy is the round-trip efficiency of the respective



Globally, communities are converting to renewable energy because of the negative effects of fossil fuels. In 2020, renewable energy sources provided about 29% of the world's primary energy. However, the intermittent nature of renewable power, calls for substantial energy storage. Pumped storage hydropower is the most dependable and widely used option ???



reserves, inertial and frequency response; voltage and reactive power regulations), and energy arbitrage. Chapter 1 describes the general energy conversion of the hydropower plant and the AS-PSH plant. Chapter 2 discusses the different types of AS-PSH at the generator level. Chapter 3 describes the AS-PSH from the power plant perspective.

TYPE 1 ENERGY STORAGE POWER STATION



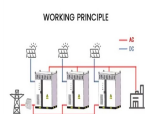
Pingjiang is the second pumped-storage power project in the Chinese province Hunan after the 1.2GW Heimifeng pumped storage plant, which has been operational since 2010. China's National Development and Reform Commission (NDRC) approved the Pingjiang pumped storage project in 2014.



By Cheng Yu | chinadaily .cn | Updated: 2024-05-06 19:18 China has made breakthroughs on compressed air energy storage, as the world's largest of such power station has achieved its first grid connection and power generation in China's Shandong province. The power station, with a 300MW system, is claimed to be the largest compressed air energy storage ???



1.2 Molten Salt Thermal Energy Storage Systems and Related Components. solid media regenerator or pressurized water type TES), two-tank molten salt storage systems provide constant power and temperature levels throughout the entire charge and discharge process, whereas other technologies typically show a drop of the temperature, power or



With the continuous development of energy storage technologies and the decrease in costs, in recent years, energy storage systems have seen an increasing application on a global scale, and a large number of energy storage projects have been put into operation, where energy storage systems are connected to the grid (Xiaoxu et al., 2023, Zhu et al., 2019, ???



MW Andasol solar power station is a commercial parabolic trough solar thermal power plant, located in Spain. The Andasol plant uses tanks of molten salt to store captured solar energy so that it can continue generating electricity when the sun isn't shining. [1] This is a list of energy storage power plants worldwide, other than pumped hydro storage.

TYPE 1 ENERGY STORAGE POWER STATION



China Central Television (CCTV) recently aired the documentary Cornerstones of a Great Power, which vividly describes CATL's efforts in the technological breakthrough of long-life batteries. The Jinjiang 100 MWh Energy Storage Power Station that appeared in the video is the first application of this technology. Contemporary Amperex Technology Co., Limited ???



The most common type of hydroelectric power plant is an impoundment facility. An impoundment facility, typically a large hydropower system, uses a dam to store river water in a reservoir. Water released from the reservoir flows through a turbine, spinning it, which in turn activates a generator to produce electricity.



For distribution network planning problem of distributed energy storage power station, this paper puts forward a distributed energy storage power station location and capacity selection of multi-objective optimization method. The IEEE33 node was used the simulation analysis of the example, the results show that the method proposed in this paper



Batteries are the most scalable type of grid-scale storage and the market has seen strong growth in recent years. Other storage technologies include compressed air and gravity storage, but they play a comparatively small role in current power systems. battery energy storage investment is expected to hit another record high and exceed USD 35



On May 14, 1968, the first PSPS in China was put into operation in Gangnan, Pingshan County, Hebei Province. It is a mixed PSPS. There is a pumped storage unit with the installed capacity of 11 MW. This PSPS uses Gangnan reservoir as the upper reservoir with the total storage capacity of $1.571 \times 10^9 \text{ m}^3$, and uses the daily regulation pond in eastern Gangnan as the lower ???