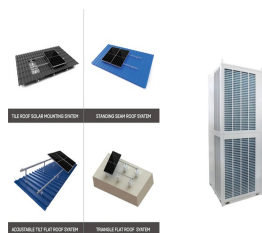
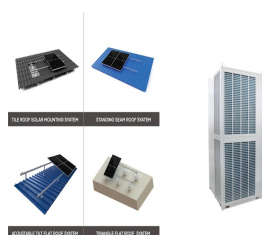


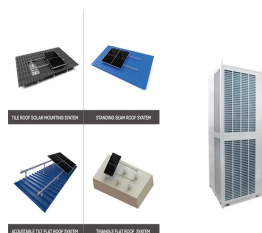
VANUATU HOME ASSISTANT LUXPOWER



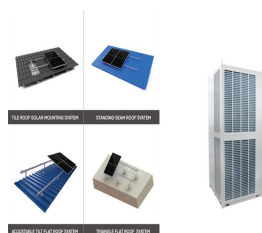
What is luxpower / home assistant? New comments cannot be posted and votes cannot be cast. I have this fully working , search GitHub for LuxPower their is a python script to access the data via Matt. Once home I will post links. Home Assistant is open source home automation that puts local control and privacy first. Powered by a worldwide community of tinkerers and DIY enthusiasts.



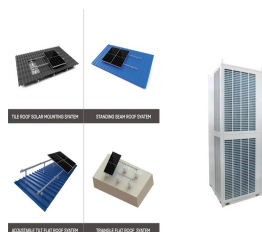
What is luxpower Python? I have this fully working , search GitHub for LuxPower their is a python script to access the data via Matt. Once home I will post links. Home Assistant is open source home automation that puts local control and privacy first. Powered by a worldwide community of tinkerers and DIY enthusiasts. Perfect to run on a Raspberry Pi or a local server.



Does luxpower AC inverter integrate with ha? Luxpower ac inverter integration? Yes,Guy has a Python version which is easy to implement into HA. Yes absolutely,Drop me a message and I can add you to my Github page. Thanks. Much appreciated. I have emailed you. Guy,Just come across this thread,I to have a lux inverter,would it be possible to use your code,also happy to provide feedback.

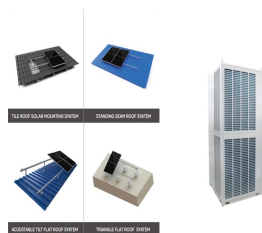


What is lux-power-distribution-card? GitHub - DanteWinters/lux-power-distribution-card: Lovelace card for Home Assistantto replicate the power flow on the LuxpowerTek App and website. Cannot retrieve latest commit at this time. A simple power distribution card of an inverter and battery system,for Home Assistant. The card is modelled after LuxpowerTek's app and website.

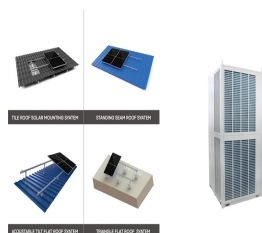


What is a luxpowertek power distribution card? A simple power distribution card of an inverter and battery system,for Home Assistant. The card is modelled after LuxpowerTek's app and website. This card has been added to the list of default HACS frontend elements. Search for the name on HACS,and download from there to install. The following is a list of configs for the card:

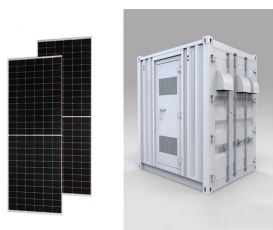
VANUATU HOME ASSISTANT LUXPOWER



How does luxpower know if my inverter is working in China? By default, the datalogger plugged into the Lux sends statistics about your inverter to LuxPower in China. This is how their web portal and phone app knows all about you. We need to configure it to open another port that we can talk to.



One evening the LuxpowerTek website was down and I could not charge the battery during a late evening cheap Octopus Agile slot. This seemed an ideal time to try and replace the GUI with something nicer in Home ???



Hunter Douglas PowerView The hunterdouglas_powerview integration allows you to integrate your Hunter Douglas PowerView devices in Home Assistant. The product is also known by the brand name Luxaflex Powerview in Europe and Australia as explained on their website, however this integration should work for both brands.. There is currently support for the following device ???



Refresh info Luxpower Home assistant theoth>>?i gian t?y ch>>?nh. by Admin. 24/09/2024. in Smart Home. 0. 0. SHARES. 184. VIEWS. Chia s??>> I?n Facebook Chia s??>> I?n Twitter. LAE?u ? : b???n n?y ch???y tr?n custom addmons Luxpython k???t n?>>?i hass v?>>?i Luxpower.



Looking to integrate luxpower ac battery inverter into home assistant - i see a guy on these forums found some code to get it working but hes not responding - anyone done this please ? Thanks again for all contributing to the luxpower project. Paul. vanzyIwj (Willem) February 18, 2023, 7:45pm 93. Hi. I would love to get my luxpower up and

VANUATU HOME ASSISTANT LUXPOWER



I'm looking for a good lux sensor for outdoor to control my shutters when the sun is shining in the windows. I have now some cheap chinese zigbee lux sensors which are on batteries. But I'm looking for a sensor that I can control with an ESP8266/ESP32 board. So I don't need to use batteries. I have found a few: TSL2591 MAX44009 VEML7700 I don't have found ???



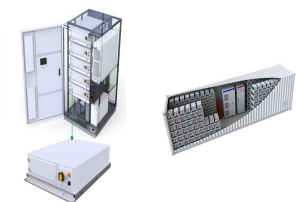
Home Assistant Community Lux sensor. Hardware. jwadsley December 20, 2021, 5:29am 1. Looking for a sensor that would register the amount of light in a room, and if its below a number the lights in the room would turn on when a door is opened. Not necessarily looking for a motion sensor, but just a lux sensor that isn't over say \$20 USD.



I am a bit confused about my automation. My automation should turn on some lights if the light is on in the living room and if the lux is under a given value. However, when value states is reached nothing happens. When I click run automation it runs as it should, but it does not fire automatically. Automation looks like this: - alias: Skru p? Blomsterlampe, Leimu og stue ???



Looking to integrate luxpower ac battery inverter into home assistant - i see a guy on these forums found some code to get it working but hes not responding - anyone done this please ? Running luxpower 3.6 with 3 x 3.2 kw batteries and solar. My email is Please add me. Thank you. Mick. tunavis March 13, 2024, 6:14pm 223



Home Assistant Community Outdoor lux device -recommendation / experiences-Hardware. alexamend (Alexander Amend) July 8, 2024, 7:00am 1. I already have some zigbee devices, and up until now I also had Phillips hue motion sensors SML002 outdoor. Our house is now being replastered,

VANUATU HOME ASSISTANT LUXPOWER



Home assistant, ti?>>n ?ch m? ae chAE?i n??ng IAE??>>ng n?n c?, li?n k???t tyamart, alexa, v? ??i?>>u khi?>>n t???t c??? theo l?>>?ch tr?nh t?>>? ???>>ng mong mu?>>n H?>>I BI?? 3/4 N T???N LUXPOWER V? PIN LAE?U TR?>>(R) | Home assistant, ti?>>n ?ch m? ae chAE?i n??ng IAE??>>ng n?n c?, li?n k???t tyamart, alexa,...



The "LuxPower Control & DB" addon integrates seamlessly with the LuxPower charge control HACS integration. It is designed to create a database and host scripts that are crucial for calculating battery entities within the LuxPower charge control system.



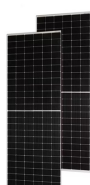
Looking to integrate luxpower ac battery inverter into home assistant - i see a guy on these forums found some code to get it working but hes not responding - anyone done this please ? Hi All, I would just like to confirm that the solution to LXP integration into home assistant by Guy works a treat! I have been using it for a couple of



Add the integration in Home Assistant: Screenshot 2022-05-15 at 19-09-59 Settings ??? Home Assistant 677x638 19.3 KB. Notes: You should keep the I 2 C connections (SDA and SCL) shorter than 30cm. However if you need to extend the length you can get up to 2m if you use twisted pair cat5 cable like this:



Home Assistant is open source home automation that puts local control and privacy first. Powered by a worldwide community of tinkerers and DIY enthusiasts. Perfect to run on a Raspberry Pi ???



Looking to integrate luxpower ac battery inverter into home assistant - i see a guy on these forums found some code to get it working but hes not responding - anyone done this please ? but would love to set up my Luxpower on it. Thx in advance! xitin0410 (lenguyen) July 7, 2024,

VANUATU HOME ASSISTANT LUXPOWER

11:07am 246. I use lux LXP and want to connect to HA,, you can

VANUATU HOME ASSISTANT LUXPOWER



Can somebody who uses one of these sensors answer this please???
Does a lux sensor measure all light levels, or just "daylight" levels? I've tried various Google searches and ended up with all sorts of random pages that don't actually answer the question. I ask because the sensor for the automatic headlights on my car can tell if I'm driving in daylight, or in a well lit ???



Very valid point. Furthermore it claims to be able to extract the data irrespective of the connectivity to the Luxpower server environment. With Solar Assistant and Luxpower currently it uses the WiFi module of Luxpower ???



Looking to integrate luxpower ac battery inverter into home assistant - i see a guy on these forums found some code to get it working but hes not responding - anyone done this please ? Please share with me. Home Assistant Community Luxpower ac inverter integration? Third party integrations. Longtran (Long tran) July 6, 2023, 4:42pm 142

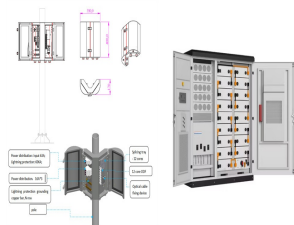


Ciao, sono nuovo in HA, ho un inverter Luxpower, mi piacerebbe provare l'integrazione per configurare alcune automazioni, spero di ricevere una tua gentile risposta, grazie. Hello, I am new in HA, I have a Luxpower inverter, I would like to try the integration to configure some automations, I hope to receive your kind reply, thanks. Google



Home Assistant Community Entity is non-numeric when state is "unknown" using built in Gauge card. Configuration. Scoff (Scott) January 14, 2022, 10:43am 1. Hi, still getting to grips with HA with no prior coding experience so please bear with me. I will try to explain the issue that I am seeing as clearly as possible.

VANUATU HOME ASSISTANT LUXPOWER



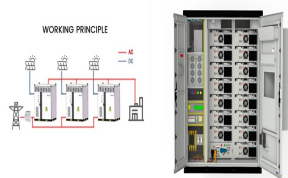
The time card is using a time-picker-card. The save and reset buttons are using a button-card. The battery level (the purple slider in the top right hand corner) is using a mushroom-number-card set to a slider. The current ???



Looking to integrate luxpower ac battery inverter into home assistant - i see a guy on these forums found some code to get it working but hes not responding - anyone done this please ? Ive a LUXPOWER 5KW LXP5kxb and i need to add to my home assistant. My GitHub username is fberraccetti. Thanks you. steve192016 (Stephen) December 11, 2023, 6



Looking to integrate luxpower ac battery inverter into home assistant - i see a guy on these forums found some code to get it working but hes not responding - anyone done this please ? so any suggestions on what battery work well with home assistant via this Lux integration would be appreciated. GNL (Graham) November 7, 2022, 1:39pm 76. Hi Guy.



If the above My button doesn't work, you can also perform the following steps manually: Browse to your Home Assistant instance. Go to Settings > Devices & Services.. In the bottom right corner, select the Add Integration button. From the list, select Opower.. Follow the instructions on screen to complete the setup.



blueprint: name: LUX Refresh Interval description: Change the interval for the LUX inverter to refresh domain: automation input: luxpower_device: name: Dongle Serial description: this is the serial starting BA??? selector: device: filter: - integration: luxpower luxpower_refresh_time: name: Interval for the refreshing data description: Input the interval in ???



At this time I haven't implemented any automation, that will come in the future but for now I will show you how I integrated it with Home Assistant and implemented a nice card to display usage. Lux Inverter Setup. By default, ???

VANUATU HOME ASSISTANT LUXPOWER



G?c nh?>>? v???, Em newbe c?i xong HA, lxp_bridge ??? load
 ??AE??>>?c d?>>? li?>>?u t?>><< Luxpower, gi?>>? l?m sao ???>>?
 ???>>?c ??AE??>>?c c?c sensor ???>>? ??AE?a v?o card v??-y ???,
 mong ??AE??>>?c