

# WALLIS AND FUTUNA SOLAR CONTROL BOX



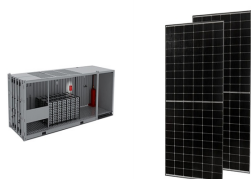
Annular Solar Eclipse: Local Type: Partial Solar Eclipse, in Wallis and Futuna: Start of Partial: Thu, Oct 3, 2024 at 5:27 am WFT: Start of Annularity: Not visible from Wallis and Futuna: End of Annularity: Not visible from Wallis and Futuna: End of Partial: Thu, Oct 3, 2024 at 6:15 am WFT: All times shown on this page are local time.



Wallis und Futuna (französisch Wallis et Futuna; manchmal auch Uvea und Futuna) ist ein französisches Überseegebiet (Collectivité d'outre-mer) im südlichen Pazifik, das aus zwei zwischen Fidschi und Samoa gelegenen Inselgruppen besteht. Die Hauptstadt ist Mata Utu auf Uvea. Das Gebiet besteht aus den drei seit 1961 anerkannten Königreichen Uvea, Sigave und ???



, 850 800 ??? ??? 15-16, 1/4 ?,



A wet day is one with at least 0.04 inches of liquid or liquid-equivalent precipitation. The chance of wet days in Wallis and Futuna varies significantly throughout the year. The wetter season lasts 8.2 months, from September 29 to June 4, with a greater than 41% chance of a given day being a wet day. The month with the most wet days in Wallis and Futuna is January, with an average of ???



For the purposes of this report, the geographical coordinates of Wallis and Futuna are -13.300 deg latitude, -176.200 deg longitude, and 62 ft elevation. The topography within 2 miles of Wallis and Futuna contains only modest variations in elevation, with a maximum elevation change of 486 feet and an average elevation above sea level of 127 feet.

# WALLIS AND FUTUNA SOLAR CONTROL BOX



PO Box 12349 Wellington 6140 New Zealand. Telephone: +64 4 474 3000  
Fax: +64 4 474 3063 Email: [information@natlib.govt.nz](mailto:information@natlib.govt.nz). The Alexander Turnbull Library has the following, though the records are not on the Internet: Wallis and Futuna ??? Pacific Manuscripts Bureau



Wallis and Futuna 2015 Fact Sheet The 2015 Wallis and Futuna GSHS was a school-based survey of students in Classes 5, 4, 3, 2, 1, Terminal, 1 CAP and T CAP, which are typically attended by students aged 13-17. A two-stage cluster sample design was used to produce data representative of all students in Classes 5, 4, 3, 2, 1, Terminal, 1 CAP and T



Introduction to Wallis and Futuna's Environment. Understanding Wallis and Futuna's Unique Ecosystem. Wallis and Futuna's ecosystem is exceptionally diverse due to its remote location and volcanic origins. The islands are home to a variety of endemic species, marine life, and pristine landscapes that range from coastal reefs to forested areas.



?,??,-?,??,??,?????,??,??,??,??,??,??,??,??,??,?? [4] (?,-?,??,??,??,??,(C):  
Wallis and Futuna; ?,??,??,?????,?????,??,?: Wallis et Futuna; ?,  
?,??,(C)?,??,??,??,??,??,??,??,-?,?????,??,-?,?????,??,??,  
?,??,(C)?,??,??,??,??,??,??,??,?: Uvea mo Futuna)  
?,<?,??,??,-?,??,?????,-?,??,??,??,??,??,??,?????,?  
?,??,??,?????,??,??,<?,??,?????????,??,??,??,??,-?,??,??,?????,??,??,  
??,??,??,??,??,?? (?,?,??,??,??,??,(C)



Key words. - Shorefish biodiversity - ISE - Wallis and Futuna - Checklist - Visual census - Rotenone. The Wallis Islands are part of Wallis and Futuna French west), Samoa (Savai'i is 400 km to the east) and Tonga (Niu- PO Box 37012, Washington, DC 20013- 7012, USA. [[williamsjt@si](mailto:williamsjt@si)] (2) LERVEM, Universite de la Nouvelle-Caledonie, BP R4

# WALLIS AND FUTUNA SOLAR CONTROL BOX



A wet day is one with at least 0.04 inches of liquid or liquid-equivalent precipitation. The chance of wet days in Wallis and Futuna varies significantly throughout the year. The wetter season lasts 8.2 months, from September 29 to June 4, with a greater than 41% chance of a given day being a wet day. The month with the most wet days in Wallis and Futuna is January, with an average of ???



Wallis and Futuna Travel Guide. This is a Wallis and Futuna Travel Guide from taste2travel . Date Visited: October 2024. Introduction. The remote French territory of Wallis and Futuna lies in a not-so-remote corner of the Pacific Ocean, with tourist hubs such as Fiji just 786 km (488 mi) to the southwest.. Despite being an off-the-radar destination, the French territory of Wallis and ???



SAFER, FASTER, STRONGER: Lake Lifter's New DC 24v Boat Lift Blower Motor Solar Control Box is an all-in-one blower motor solar control box that provides everything needed to quickly operate any air-displacement boat lift with safe and reliable DC solar power (batteries not included). This powerful unit works on all brands & styles of air



Improved care and rising living standards in Wallis and Futuna have helped to control many infectious diseases, resulting in increased life expectancy and a steady decline in infant mortality. But lifestyle changes (unhealthy diet, tobacco and alcohol consumption, physical inactivity) have led to a rise in metabolic pathologies and other NCDs.



September Weather in Wallis and Futuna Wallis & Futuna. Daily high temperatures are around 85°F, rarely falling below 83°F or exceeding 87°F. Daily low temperatures are around

# WALLIS AND FUTUNA SOLAR CONTROL BOX



Wallis and Futuna Islands A week long side trip will be also organized to Futuna island (IOTA OC-118, DIFO FW-017, WW Loc. AH05WQ) for IOTA hunters early February (approx. 3-10 February) using the callsign TW0F. First Portable Solar Setup For Ham Radio ??? Bioenno Solar Charge Controller SC-4830JUD and TCXW 100 Watts 12 Volts Portable Solar



LiftMaster Solar XL Control Box XLSOLARCONTUL now with MyQ technology, 2019 UL325 Compliant XL Metal Solar Control Box. Dimensions: 21" H x 17.22" W x 6.19" D . Includes solar harness, and LMRRUL monitored photo-eye. Compatible with LiftMaster LA400DC. Batteries and solar panels are not included.



Users can register and get updated information on Wallis And Futuna Islands Government Control Panel Tenders, RFQ, government contracts and eprocurement tenders. The largest source of government tenders, RFP, RFQ and eProcurement Notices. Info on global procurement is sourced from tender bulletin, auction sites, bidding websites, e procurement



Les missions de Wallis et Futuna La 1re sont de produire des programmes de proximit?, d'assurer une meilleure repr?sentation de la vie sociale, culturelle, sportive, musicale et ?conomique de l'archipel dans le Pacifique Sud en concertation avec Polyn?sie La 1re et Nouvelle-Cal?donie La 1re et ? l'international par la coproduction de magazines et par le biais ???



July Weather in Wallis and Futuna Wallis & Futuna. Daily high temperatures are around 84°F, rarely falling below 82°F or exceeding 86°F. The lowest daily average high temperatu

# WALLIS AND FUTUNA SOLAR CONTROL BOX

---



A wet day is one with at least 0.04 inches of liquid or liquid-equivalent precipitation. The chance of wet days in Wallis and Futuna varies significantly throughout the year. The wetter season lasts 8.2 months, from September 29 to June 4, with a greater than 41% chance of a given day being a wet day. The month with the most wet days in Wallis and ???