

# WASHINGTON ENERGY STORAGE POWER STATION FIRE



What causes large-scale lithium-ion energy storage battery fires?  
Conclusions Several large-scale lithium-ion energy storage battery fire incidents have involved explosions. The large explosion incidents, in which battery system enclosures are damaged, are due to the deflagration of accumulated flammable gases generated during cell thermal runaways within one or more modules.



Where can I find information on energy storage safety? For more information on energy storage safety, visit the [Storage Safety Wiki Page](#). The BESS Failure Incident Database was initiated in 2021 as part of a wider suite of BESS safety research after the concentration of lithium ion BESS fires in South Korea and the Surprise, AZ, incident in the US.



What are stationary energy storage failure incidents? Note that the Stationary Energy Storage Failure Incidents table tracks both utility-scale and C&I system failures. It is instructive to compare the number of failure incidents over time against the deployment of BESS. The graph to the right looks at the failure rate per cumulative deployed capacity, up to 12/31/2023.



How many MWh of battery energy were involved in the fires? In total, more than 180 MWh were involved in the fires. For context, Wood Mackenzie, which conducts power and renewable energy research, estimates 17.9 GWh of cumulative battery energy storage capacity was operating globally in that same period, implying that nearly 1 out of every 100 MWh had failed in this way.<sup>1</sup>



How many energy storage battery fires are there? Unfortunately, there have been a large number of energy storage battery fires in the past few years. For example, in South Korea, which has by far the largest number of energy storage battery installations, there were 23 reported fires between August 2017 and December 2018 according to the Korea JoongAng Daily (2019).

# WASHINGTON ENERGY STORAGE POWER STATION FIRE



Where can I find information on energy storage failures? For up-to-date public data on energy storage failures, see the EPRI BESS Failure Event Database.<sup>2</sup> The Energy Storage Integration Council (ESIC) Energy Storage Reference Fire Hazard Mitigation Analysis (ESIC Reference HMA),<sup>3</sup> illustrates the complexity of achieving safe storage systems.



A total of \$37 million awarded through two clean energy programs furthers the goals of Washington's 2021 State Energy Lyle to install a 44 kW solar and battery energy storage system at the Lyle Fire Department and Incident Response Twisp to install a 72 kW solar project paired with battery energy storage to power a community



MW Andasol solar power station is a commercial parabolic trough solar thermal power plant, located in Spain. The Andasol plant uses tanks of molten salt to store captured solar energy so that it can continue generating electricity when the sun isn't shining. [1] This is a list of energy storage power plants worldwide, other than pumped hydro storage.



Battery storage shall be located not less than 3 feet (914 mm) from any building, lot line, public street, public alley, public way, or means of egress, where the battery storage is separated by a 2-hour fire-resistance rated assembly without openings or penetrations and extending 5 feet (1524 mm) above and to the sides of the battery storage area.



The Goldendale energy storage project is a 1.2GW closed-loop pumped storage hydropower station planned to be developed in Washington, US. The electricity generated power at the power station will be routed via 18/155kV intermediate step-up transformers housed in the transformer gallery located adjacent to the powerhouse to an ???

# WASHINGTON ENERGY STORAGE POWER STATION FIRE



for Battery Energy Storage Systems . Prepared for the Maryland Department of Natural Resources, Power Plant Research Program Exeter Associates February 2022 . Summary . The following document summarizes safety and siting recommendations for large battery energy storage systems (BESS), defined as 600 kWh and higher, as provided by the New



Such as, Lai et al. [80] proposed to design an immersive energy storage power station. When a fire explosion and other safety accidents occur, a large amount of water is poured into the energy storage power station, which can achieve rapid cooling and save water. At the same time, we should not only consider the fire protection measures after



storage-charging integrated station project Institute of energy storage and novel electric technology, China Electric Power Technology Co., Ltd. April 2021 1. General information of the project Jimei Dahongmen 25 MWh DC photovoltaic-storage-charging integrated station project was reported to the Development and Reform Commission



The International Renewable Energy Agency predicts that with current national policies, targets and energy plans, global renewable energy shares are expected to reach 36% and 3400 GWh of stationary energy storage by 2050. However, IRENA Energy Transformation Scenario forecasts that these targets should be at 61% and 9000 GWh to achieve net zero ???



The second fire! Accidents continue to occur at the largest energy storage battery power station in the world! For a long time, people familiar with lithium batteries can't help thinking of battery supplier LG New Energy when they see a fire in an energy storage project. Yes, this time it also has something to do with LG new energy. According to media reports, on the evening of ???

# WASHINGTON ENERGY STORAGE POWER STATION FIRE



The International Renewable Energy Agency predicts that with current national policies, targets and energy plans, global renewable energy shares are expected to reach 36% and 3400 GWh of stationary energy ???



WASHINGTON STATE FIRE CODE iii PREFACE Authority The International Fire Code(R) (Chapter 51-54A WAC) is adopted by the Washington State Building Code Council pursuant to Chapters 19.27 and 70.92 RCW. These codes were first adopted by refer-ence by the Washington State Legislature in 1974. In 1985, the Legislature delegated the responsi-



netic energy storages, while the chemical energy storage is the most widely used. Lithium ion batteries (LIB) energy storage is the most mature and reliable tech-nology in chemical energy storage [20]. However, the use of LIB may lead to ther-mal runaway, even ignition and explosion [5]. This paper reviews the causes of ???re



Washington State Fire Code Chapter 12 Energy Systems. BASIC READ ONLY Fullscreen Legend EMERGENCY POWER SYSTEM. ENERGY MANAGEMENT SYSTEMS. FUEL CELL POWER SYSTEM, STATIONARY. Capacitor energy storage systems shall not be located in areas where the floor is located more than 75 feet (22 860 mm) above the lowest level of fire



In order to ensure the normal operation and personnel safety of energy storage station, this paper intends to analyse the potential failure mode and identify the risk through DFMEA analysis method

# WASHINGTON ENERGY STORAGE POWER STATION FIRE



In addition, the company donated \$250,000 to support the Valley Center Fire Protection District's new fire station. Terra-Gen reports that it owns and operates four battery energy storage projects in California, representing over 1.5 GW of energy storage, or enough to power 1.5 million homes for approximately 4 hours. The company has an



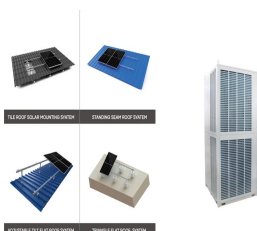
Schematic diagram of lithium battery fire propagation in an energy storage station. In the study of horizontal thermal propagation, extensive research has been conducted on both LFP cells and battery modules, including their combustion characteristics and TR properties. [32], heater power [33], environmental pressure [34] and other aspects.



Tehachapi Energy Storage Project, Tehachapi, California. A battery energy storage system (BESS) or battery storage power station is a type of energy storage technology that uses a group of batteries to store electrical energy. Battery storage is the fastest responding dispatchable source of power on electric grids, and it is used to stabilise those grids, as battery storage can ???



There are serious risks associated with lithium-ion battery energy storage systems. Thermal runaway can release toxic and explosive gases, and the problem can spread from one malfunctioning cell



Energy Storage Science and Technology ?????? 2024, Vol. 13 ?????? Issue (2): 536-545. doi: 10.19799/j.cnki.2095-4239.2023.0551 ??? Energy Storage System and Engineering ??? Previous Articles Next Articles Comprehensive research on fire and safety protection technology for lithium battery energy storage power stations

# WASHINGTON ENERGY STORAGE POWER STATION FIRE



This paper summarizes the fire problems faced by the safe operation of the electric chemical energy storage power station in recent years, analyzes the shortcomings of the relevant design



. It is the largest commercial user-side energy storage power station in the city center of Beijing, the largest social public high-power charging station, the first 10,000-degree optical storage charging station, and the first user-side The new energy DC incremental power distribution network is also the largest optical



The power grid is composed of various substation systems, transmission lines and energy storage systems. The task of the power grid is to transmit and distribute electric energy, which makes the systems equipped with transformers, batteries and other flammable and explosive materials [4, 5].Due to the increasing load and scale, the fire risk of power grid is ???



NPP's Energy Storage Power Station, a cutting-edge solution that seamlessly combines lithium iron phosphate batteries, advanced Battery Management System (BMS), Power Conversion System (PCS), Energy Management System (EMS), HVAC technology, Fire Fighting System (FFS), distribution components, and more, all housed within a robust outdoor energy storage ???



Korea has encountered the crisis of energy storage power station fire. The 21 energy storage fire incidents in South Korea since 2017 have brought about the overall stagnation of South Korea's local energy storage industry. By analysing the past 21 fires at energy storage plants, 16 fires were reported to have been caused by battery systems. In

# WASHINGTON ENERGY STORAGE POWER STATION FIRE

---



Lead-acid battery systems in uninterruptible power supplies listed and labeled in accordance with UL 1778, utilized for standby power applications, which is limited to not more than 10 percent ???