

# WEATHER STATION FOR SOLAR PV PLANT PAKISTAN



Which weather station for solar power plants compatible with Huawei smartloggers? SEVEN provides a full set of weather station for Solar Power Plants compatible with Huawei Smartloggers. It includes different sensors required to monitor the Solar PV Plant using the Huawei monitoring systems as Neteco and Enspire.



Does Sungrow provide a weather station for solar power plants? SEVEN provides a full set of weather station for Solar Power Plants compatible. It includes different sensors required to monitor the Solar PV Plant using iSolarCloud monitoring system. Sungrow was founded in 1997 and is the world's leading supplier of inverter solutions in the renewable energy sector, with over 79 GW of inverter deliveries.



Which weather station is compatible with Huawei smartloggers? SEVEN provides a full set of weather station for Solar Power Plants compatible with all models of Huawei Smartloggers. It includes different sensors required to monitor the Solar PV Plant using the Huawei monitoring systems; Enspire, and Neteco or FusionSolar. SEVEN Sensor is working as solution partner for Huawei distributors.



Which sensors can be used to monitor solar PV plant? It includes different sensors required to monitor the Solar PV Plant using the Huawei monitoring systems; Enspire, and Neteco or FusionSolar. SEVEN Sensor is working as solution partner for Huawei distributors. In fact, the compatibility of our sensors with Huawei Smartloggers have been approved by the Huawei headquarter.



Which meteorological sensors are suitable for solar PV installations? OTT HydroMet meteorological sensors are tailor-made for commercial and industrial solar PV installations. The Lufft WS line offers powerful instruments with various combinations of sensors for measuring atmospheric parameters. For solar PV applications, we recommend the Lufft WS600.

# WEATHER STATION FOR SOLAR PV PLANT

## PAKISTAN



Which sensors are used for Huawei weather station? The standard sensors that are used for the Huawei weather station are as follows: Irradiance Sensor or PV Pyranometer, with Modbus RTU output, that measures radiation, is also used as a Reference Cell due to its high measuring accuracy. Taking into consideration that the use of this PV Pyranometer is crucial for measurement in solar applications.



Solar PV plant performance and life are critically dependent on surrounding weather conditions. Hence, weather monitoring is a crucial asset to help optimize the overall performance and running efficiency of solar PV systems. Following are some key parameters that directly affect the energy output and hence the ROI:



SEVEN Sensor Solutions produces a full set of weather station compatible with the following Huawei Smartloggers: 1000A Smartlogger, 2000 Smartlogger, 3000 Smartlogger and the 3000A Smartlogger. The Huawei meteorological station includes various sensors that allows measuring the efficiency and performance of the solar PV plants.



Pakistan is a developing country that is facing its worst energy crisis in two decades. In recent years, the gap between demand and supply has multiplied. With increasing demand, this situation has triggered a complete power shutdown in urban areas for 10???12 h and rural areas for 16???18 h. The prime objective of this study is to evaluate the techno-economic ???



In order for a solar PV plant to achieve Class A status for IEC, there must be a soiling station onsite per those recommendations. Does every plant meet those standards? They can help you with the specifics on how the data can integrate with other weather station data. Nor-Cal's Solar PV Operations training also covers MET stations, soiling

# WEATHER STATION FOR SOLAR PV PLANT PAKISTAN



It is suitable alternate to conventional sources for electricity generation being safe, noiseless, non-polluting and having a lifetime between 20 to 30 years [7, 8]. In grid-tied solar PV power plant, the solar panel produces the DC power, which is subsequently converted into AC power and supplied to the grid for distribution and utilization.



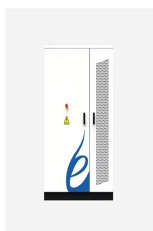
Experienced Solar PV Weather Team . PowerWise has solar PV customers and industry contacts from all over the world. You can trust the PowerWise team with your MET stations for PV. Call +1-207-370-6517, email sales@powerwisesystems , or use our webform. Contact PowerWise today



Los factores meteorológicos juegan un papel importante en la eficiencia de la generación de energía fotovoltaica. El instrumento de monitoreo meteorológico integrado ingresa información meteorológica en tiempo real en el sistema de predicción de energía óptica para ajustar el estado de generación de energía y los indicadores operativos de manera oportuna, ???



Life cycle costs | The IEC 61724-1:2021-compliant design, remote diagnostics, and easy-to-deploy-and-use weather station requires minimal resources to set up, operate, and maintain throughout the solar power plant's lifetime. O& M | Self-diagnostic and network sensor monitoring allows users to manage and control networks remotely, while the solution's ???



Growatt Weather Station. SEVEN provides a full set of Weather Station for Solar Power Plants compatible with Growatt Datalogger. It includes different sensors required to monitor the Solar PV Plant. Growatt is a world leader in providing intelligent and innovative energy solutions, founded in 2010, it ranks among the world's top ten suppliers

# WEATHER STATION FOR SOLAR PV PLANT PAKISTAN



Find your solar power plant weather station easily amongst the 17 products from the leading brands on DirectIndustry, the industry specialist for your professional purchases. multi-point weather station platform for PV monitoring. PVmet is an innovative sensor platform for PV monitoring, developed by Rainwise Inc. and provided by EKO.



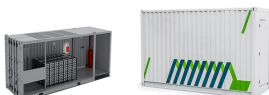
on reliable weather information is key to understand plant behavior. It helps to identify the best spot for the panels, to troubleshoot output fluctuation, and, finally, to maximize profit. Weather Station for Solar PV Weather Station for Solar PV For large PV installations, even small relative fluctuations in performance can make a huge



Weather Stations of SEVEN, Sensors and Dataloggers. The sensors that we, as SEVEN Sensor, produce are as following; the Irradiance Sensor, that measures the total solar radiance in Watts per square meter, the Ambient and Module ???



The Lufft WS600 is a compact all-in-one weather station with measurement of: temperature, relative humidity, dew point, type, intensity and amount of precipitation, air pressure, and direction and speed of wind.



Keywords Photovoltaic, Photovoltaic power plant, PV syst software, Cost analysis Energy is a major driver of modern economies, essential for education, healthcare, agriculture, and employment,

# WEATHER STATION FOR SOLAR PV PLANT

## PAKISTAN



GeoSUN provides turn-key SCADA weather stations for PV and CSP plants. The service include: Specify and Design; Detailed drawings (electrical and mechanical) Annual on-site calibration of solar and meteorological instruments; Owners and operators should take note of the latest standard governing the monitoring of PV plants: IEC 61724-1:2021



Weather Station for PV-Solar Power Plants Meteorological factors play an important role in the efficiency of photovoltaic power generation. The integrated meteorological monitoring instrument inputs real-time meteorological information into the optical power prediction system to adjust the power generation status and operating indicators in a



For example, CAISO needs a continuous MET station telemetry from a solar PV plant in order to know how much that plant can produce based upon the MET station requirements. Battery backup is crucial because if a site loses ???



SMA Weather Station. SEVEN provides a full set of weather station for Solar Power Plants compatible with SMA Data Managers and Cluster Controllers. It includes different sensors required to monitor the Solar PV Plant using SMA ???



Building an Effective Meteorological Station for Solar PV. Thanks to the number of parameters of interest and the sheer volume of different sensors on the market, assembling a meteorological station capable of providing complete and accurate information can be daunting. Selected setup recommended for solar PV plants: WS600 All-in-One

# WEATHER STATION FOR SOLAR PV PLANT PAKISTAN



This Solar 1 Weather Station installation shows two radiation sensors, one at plane of array and one at GHI, as well as the Orion weather sensor module on the mast at right. Photo courtesy of Industrial Electrical Contactors Ltd. Easy Installation and Operation Saves Money for PV Plants. CWS weather stations are preferred for ease of



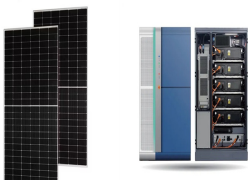
Commercial and Industrial PV Weather Stations. The PVmet 200 is the most popular weather station for C& I solar. It includes 2 irradiance sensors, commonly used to measure global irradiance and plane of array. The weather station features sensors for wind speed and direction, as well as ambient air and panel temperature. Utility Solar PV Weather



Weather Station for Solar PV. For large PV installations, even small relative fluctuations in performance can make a huge difference to overall productivity. That's why meteorological monitoring is key to determine whether variations in ???



Growatt Weather Station is a compact professional 5 in 1 solution for the monitoring of weather information of solar power plant. Also a data logger box is installed to collect data from sensors and communicate with remote ???



Life cycle costs | The IEC 61724-1:2021-compliant design, remote diagnostics, and easy-to-deploy-and-use weather station requires minimal resources to set up, operate, and maintain throughout the solar power plant's ???

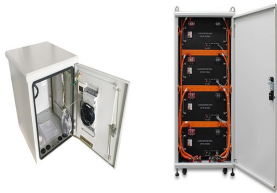


# WEATHER STATION FOR SOLAR PV PLANT

## PAKISTAN



Met One's Solar Monitoring System is an automated weather station specifically designed for solar resource assessment and solar farm power generation monitoring, such as photovoltaic power stations. The system is easily customized with accessories for additional measurements, wireless communications, and remote operation.



Modern weather stations use a variety of advanced instruments and technologies to observe and record various weather phenomena. The most important equipment is the meteorological sensor, which can measure various meteorological elements such as temperature, humidity, wind speed, wind direction, air pressure, precipitation, etc.



It is a way of assisting PV plant operators and quantifying power loss. A MET station or Weather Monitoring Station (WMS) is one of the key components in a PV-Solar power plant, and they are crucial in measuring the efficiency and ???



The article analyse different configurations of a 100 MW Peak DC Fixed Tilted Polycrystalline Photovoltaic (PV) Solar Power Plant. The article first defines the general layout of the plant than it outlines certain fixed parameters such as plant location, its ???



More details about SolarEdge weather station. The most required sensors from the SolarEdge weather station are as follows: PV Pyranometer, with Analog Output, is the essential sensor of the SolarEdge weather station is made of monocrystalline silicone and connected to a high-precision shunt.

# WEATHER STATION FOR SOLAR PV PLANT PAKISTAN



As Seven Sensor solutions, we have weather stations that are produced in accordance with the monitoring systems of different datalogger manufacturers. Weather stations measure the efficiency of solar power plants and uses ???



From my perspective as an engineer of weather station and performance monitoring systems, I am surprised how quickly the standard has been adopted. implementation of this standard has not been limited to PV plants. Soiling, ventilation, and a more critical attention to maintenance are now common parameters on today's solar resource