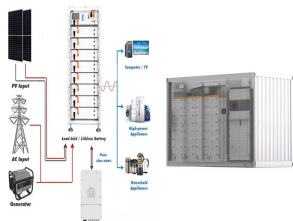
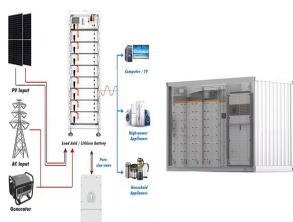


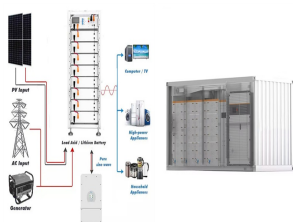
WEIGHT OF YINGLI PHOTOVOLTAIC PANELS



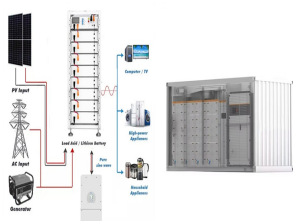
How efficient are Yingli solar panels? Yingli Solar panels have efficiency ratings between 19.08% and 20.70% which are high-efficiency ratings. When determining a solar panel's power rating, solar panels are tested under standard test conditions, or conditions that remain constant to fairly compare and test solar panels.



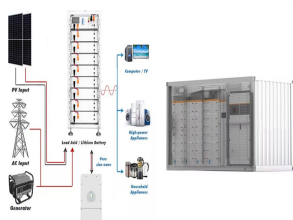
Where are Yingli solar panels manufactured? Yingli Solar, headquartered in China, manufactures its solar panels using advanced technology. The company sells its solar panels in New Zealand via distributors and has won many awards for its panels. Yingli Solar produces and supplies the following solar modules:



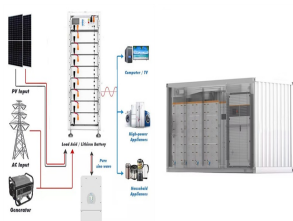
What is Yingli Solar power rating? The positive power rating for Yingli solar panels is listed at 0/+5 W, meaning that the panels will not produce less than their power rating but they might produce as much as 5 W more than their highest rated wattage. What is the Yingli Solar warranty?



What is Yingli Solar? An error occurred while retrieving sharing information. Please try again later. Founded in 1998 by Liansheng Miao in Baoding, China ??? Yingli Energy (China) Company Limited, known as ??? Yingli Solar ??? has over 20 years experience as a solar panel manufacturer.



What is a Yingli YL250P-29b solar panel? The Yingli YL250P-29b solar panel is ideal for residential or commercial grid-tie solar systems. For Yingli reviews and wholesale pricing, please contact us.

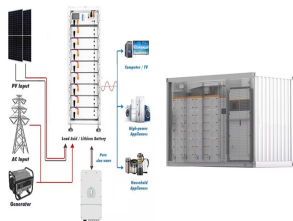


Are Yingli solar panels good for ground-mount solar projects? The modules offer an equally impressive module efficiency stretching up to 21.57% for the YLM 132 Cell (G12) model which uses the same cell technology as the Mono Series. These panels would be better suited to

WEIGHT OF YINGLI PHOTOVOLTAIC PANELS

ground-mount solar projects. Yingli's latest solar panel to drop in Australia in early 2024 is the Panda 3.0 Pro.

WEIGHT OF YINGLI PHOTOVOLTAIC PANELS



Yingli's latest solar panel to drop in Australia in early 2024 is the Panda 3.0 Pro. This is a 440W bifacial solar panel which utilises N-type monocrystalline cell technology. The panel dimensions are 1.76m by 1.13m ???



Snail Trail Yingli 250W Solar Panel \$ 40.00-Out of stock. The used Yingli 250W solar panels have developed snail trails but are still the perfect panel for your home! They come with our 1-year SanTan Warranty. Weight: 42.11 lbs. Dimensions: 64.96 x 38.98 x 1.57 inches; Click below for datasheet. Yingli 250W. Additional information. Weight



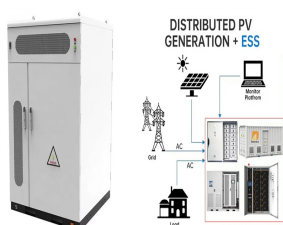
In the solar world, panel efficiency has traditionally been the factor most manufacturers strived to lead. However, over the last 3 to 4 years, a new battle emerged to develop the world's most powerful solar panel, with many of the industry's biggest players announcing larger format next-generation panels with power ratings well above 600W.



These are used Yingli 230W Solar Panels. The cells have significant yellowing. Weight: 43.65 lbs. Dimensions: 64.96 x 38.98 x 1.97 inches Warranty: 1 Year Warranty Still have questions? Give us a call at 877-242-2792. At Sienna Solar, we'll help you find and install the perfect solar panel system. As a one-stop shop for solar power



Yingli Green Energy (NYSE:YGE) is one of the world's largest fully vertically integrated PV manufacturers. With over 3.6 GW of modules installed globally, Yingli is a leading solar energy company built upon proven product reliability ???



PANDA 3.0 PRO | 560-575 W The Yingli Solar PANDA 3.0 PRO is a premium solar panel that delivers high power output, excellent temperature performance, and potential bifacial generation benefits. For Australian homeowners and businesses seeking a future-proof solar

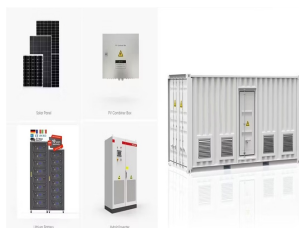
WEIGHT OF YINGLI PHOTOVOLTAIC PANELS

solution, the PANDA 3.0 PRO is a compelling option, especially for those with good ???

WEIGHT OF YINGLI PHOTOVOLTAIC PANELS



YingLi solar cell panel 550w 144 cells mono pv module half cell all black bifacial solar panel, You can get more details about YingLi solar cell panel 550w 144 cells mono pv module half cell all black bifacial solar panel from mobile site on Alibaba Single gross weight: 35.300 kg. Show more. Lead time. Quantity (watts) 1 - 1000 > 1000



Weight: 21.00 KGS Width: 990.00 CM Height: 1,970.00 CM Depth: CM Availability: For Pricing Call us on 0203 287 8264 or Email us at info@renugen.uk Yingli Solar P-35b 280 Watt Solar Panel Module is a vertically integrated manufacturer of solar photovoltaic modules. Under one roof we manufacture our ingots, wafers, cells and modules.



PANDA 3.0 PRO | 415-430 W The Yingli Solar PANDA 3.0 PRO is a premium double-glass solar panel offering excellent efficiency, durability, and temperature coefficient. If you're looking for a high-performing and long-lasting ???



Our research team has searched extensively for the most efficient panels. All of these products have an efficiency rating of 22.5% or above. The most efficient solar panel is the AIKO 72-cell N-Type ABC White Hole . As solar panel costs have fallen in recent years, solar panel efficiency has increased at a tremendous pace.. You can now choose from countless ???



W Solar Panel 120 Cell 34D-BBM6FHC-005 is the highest power solar module in residential US market. Look into detailed descriptions, ratings, reviews, pictures, and more. Weight: 42.99lbs: Pallet Qty: 30: Manufacturer: Yingli: Manufacturer Part # 34D-BBM6FHC-005: Operating Temperatures : ???40°F to +185°F:

WEIGHT OF YINGLI PHOTOVOLTAIC PANELS



At present, Yingli Solar has more than 10 branches across the world, including the offices in United States, Spain, Japan and Australia. From May 2003 to July 2019, Yingli Solar has provided photovoltaic products to 132 countries, ranking third among its competitors in terms of the number of customer countries.



The Yingli-YL235P-29b solar panel is a good low-cost panel for residential and commercial solar systems. Review Yingli YL235P-29b solar module highlights. Weight (lbs) 43.7 Length (in) 64.96 Width (in) 38.98 Height (in) 1.97 Yingli ???



Weight: A standard YINGLI Solar panel might weigh between 15 to 25 kilograms, again depending on the specific model and design. Warranty: YINGLI Solar panels usually come with a warranty ranging from 10 to 25 years, covering defects in materials and workmanship, as well as guaranteed power output levels over time.



W Solar Panel 108 Cell All Black YL400D-37e-1/2 Clearance at A1SolarStore. Menu; Store. Store; Solar panels . Back. Wattage. 360 watt; 365 watt; Solar panels differ by power output, voltage, connection ???



Watt Monocrystalline Solar Panel | Remanufactured. SKU. USED-YINGLI-260. \$49.99 Special Price \$49.99 43 lbs. Notify me when product is back in stock. Availability: Out of Weight (lbs) 43 lbs / 19.5 kg . Panel Certifications: BS OHSAS 18001:2007;

Commercial and Industrial ESS
Air Cooling / Liquid Cooling
● Plug-and-play Solution
● Renewable Energy Integration
● Modular Design for Flexible Expansion

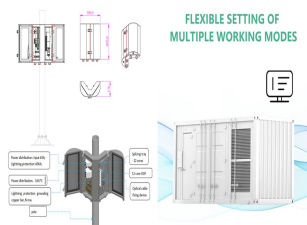


Headquartered in Baoding, China, Yingli Energy Development Company Limited, known as Yingli So- renewable energy through PV power generation technology for factories, homes and utilities around the world. Yingli Solar provides reliable products and services through continuous

WEIGHT OF YINGLI PHOTOVOLTAIC PANELS

technological advancement and man - Weight 28.0 kg Warning

WEIGHT OF YINGLI PHOTOVOLTAIC PANELS



Yingli Energy (China) Co., Ltd. ("Yingli Solar"), and is explicitly Yingli Solar PV Modules have a Class C fire resistance rating in accordance with the IEC 61730-2 certification. When PV modules are mounted on rooftops, the with a salt concentration of 5% by weight, galvanic corrosion can occur between



Learn about the Yingli YL310P-35b solar panel. Explore solar panel efficiency, warranties and more. EnergyPal. Free Quote. The thermal performance of the . YL310P-35b solar panels from Yingli ensures their reliability and efficiency across varying temperature Weight 22 kg. Cell Type Polycrystalline. Cell Size 156.75x156.75 mm. Cell



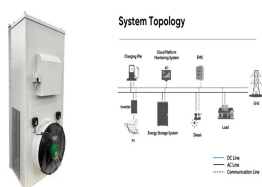
Learn about the Yingli YL330P-35b solar panel. Explore solar panel efficiency, warranties and more. EnergyPal. Free Quote. The thermal performance of the . YL330P-35b solar panels from Yingli ensures their reliability and efficiency across varying temperature Weight 22 kg. Cell Type Polycrystalline. Cell Size 156.75x156.75 mm. Cell



130W off grid solar panel for 12V battery charging. These photovoltaic modules are suitable for a range of professional & DIY applications and come with a 25yr limited warranty. solar shop 12V Yingli solar panel back 12V Yingli solar panel. Previous Click images to enlarge Next Weight: 16.0kg; Rated 130W: 7.43A @ 17.5V; Please note



From May 2003 to July 2019, Yingli Solar has supplied photovoltaic products to 132 countries, ranking as one of the top solar PV module manufacturers in terms of international reach. With a global installed capacity accounting for 3.1% of the world's total, Yingli Solar ranks eighth among all solar PV panel manufacturers.



Spec sheet/data sheet for the Yingli Solar YL180P-23b (180W) solar panel. Features; Pricing; Login; Yingli Solar YL180P-23b (180W) Solar Panel. Weight 34.8lb (15.8kg) Installation Method Rack-Mounted ; Warranty and Certifications. 80% Power Output Warranty Period 25yrs ;

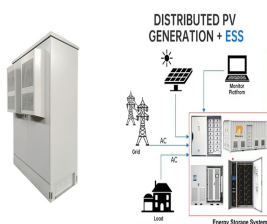
WEIGHT OF YINGLI PHOTOVOLTAIC PANELS



The Yingli range of polycrystalline solar panels are superb value for money, offering a free 12V power source for both professional and DIY applications. The panels are constructed with a heavy duty anodised aluminium



You might also hear of 120 half-cell panels (equivalent size to 60 cells) or 144 half-cell panels (equivalent size to 72 cells). These half-cell panels, as you might suspect, have their solar cells cut in half.



PANDA 3.0 PRO | 610-625 W The Yingli Solar PANDA 3.0 PRO is a powerful and efficient solar panel with features well-suited to the Australian climate. While the upfront cost might be higher, its advantages in efficiency, ???



The Yingli YL245P-29b solar panel is popular for reliable low-cost home solar systems. Review Yingli YL245P-29b solar module highlights. REC SOLAR PANEL SPECIALS ; SOLAR RESOURCES & DESIGN SERVICES . View All ???



Weight: 18.00 KGS Width: 99.00 CM Height: 165.00 CM Depth: 3.50 CM Shipping: Calculated at checkout : Quantity: Product Description. Yingli YL250P-29b 250 Watt Solar Panel Module ??? this is an independent review for Yingli ???



Watt Mono Solar Panel - YL320D-30B | Black Frame | Black Backsheet, BoB | \$0.573/watt | P-Type 60-Cell Mono YLM-TI Series | Efficiency Rating: 19.6% | Plug Type: MC4 Compatible | Robust light-weight anodized aluminum alloy | 15 Amp Fuse | Maximum System Voltage:

WEIGHT OF YINGLI PHOTOVOLTAIC PANELS

1000VDC | Excellent weak light performance | Min Qty: Lot of 14 Panels
(Pallet: 30 ???)