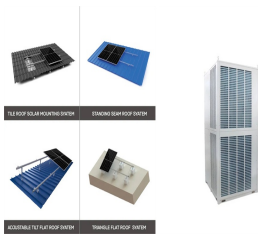


WESTERN SAHARA BIOLITE SOLARHOME

620 BATTERY EXPANSION



The BioLite SolarHome 620 brings modern lighting, energy, and entertainment to transform any structure into an off-grid home. The easy-to-install 6 watt solar panel captures daily sun to charge up a central 20 Wh control box which powers 3 hanging lights, USB charge-out, and an MP3/FM radio system.



The BioLite SolarHome 620 is an easy-to-install solar panel that captures daily sun to charge up a central control box which powers 3 hanging lights, USB charge-out, and an FM radio system. (Expansion Battery) Light Port x 2; Light Junctions x 3 (Light Extensions) Battery. 3600 mAh @ 6.5V Western Australia 6112. FREE DELIVERY. Free



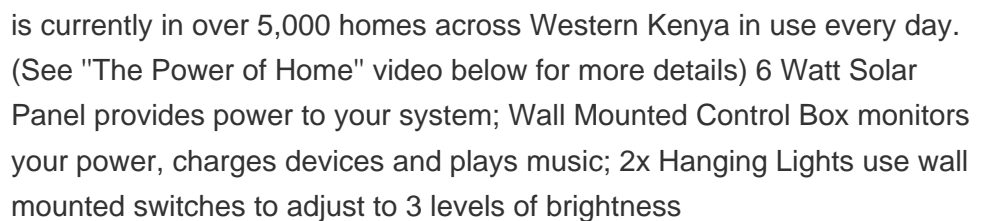
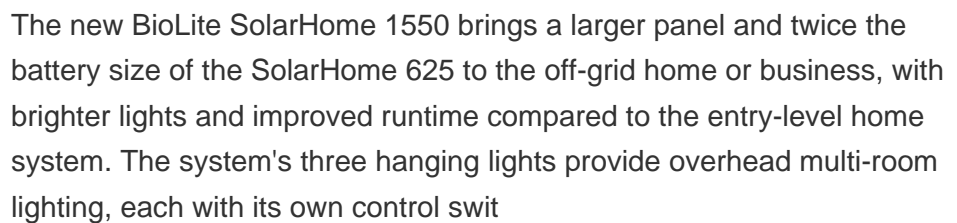
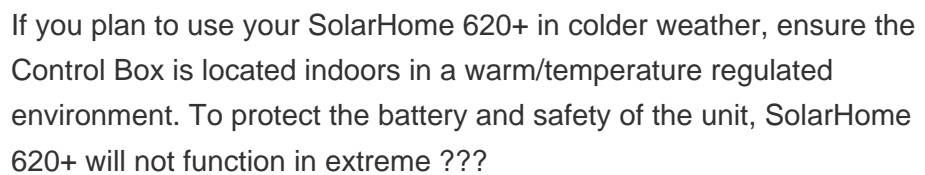
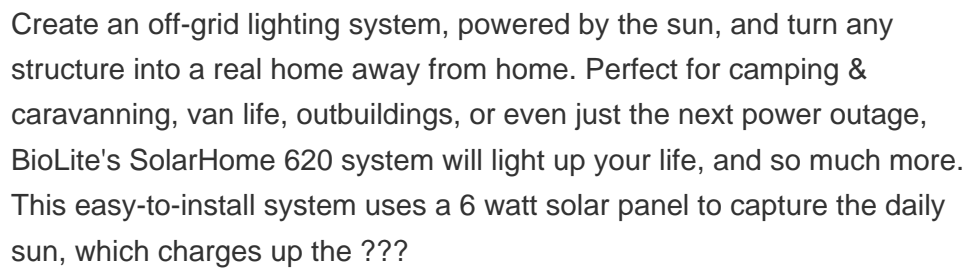
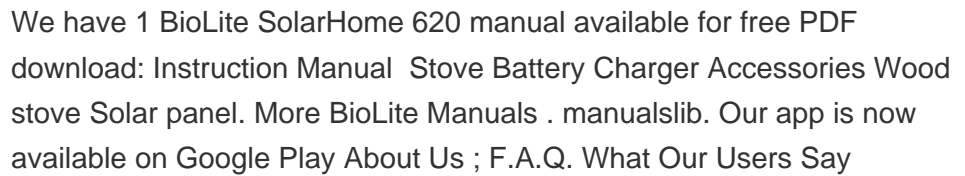
Turn any off-grid structure into an electrified home with the BioLite SolarHome 620+, a self-contained system with hanging lights, MP3/FM radio, solar charger and USB charge-out for your devices. 1 DIN port for expansion battery (not ???



The improved BioLite SolarHome 625 brings modern lighting, charging, and entertainment to the off-grid home. Featuring 25% more run time via improved LED efficiency, the system's three hanging lights provide overhead multi-room lighting, each with their own control switch ??? and one with an included motion-activated sec



BioLite Customer, Joseph Mwaura Stepping Up The Energy Ladder A proud owner of both a SolarHome 620 and SolarHome 5000, at night Joseph's home is alive with light and television and, during the day, he can be seen sitting outside his home with the radio of his SolarHome detached, to his ear playing the local Inoroo TV radio, and connecting him to the world beyond ???



WESTERN SAHARA BIOLITE SOLARHOME

620 BATTERY EXPANSION



Designed for use with the SolarHome 620, this adapter plugs into the solar input port on your Control Box for fast wall charging. Filling the 20Wh battery in under two hours, this is a reliable way to give your SHS620 an on-grid supplement for overcast days or head start before the next power outage. Charges SolarHome



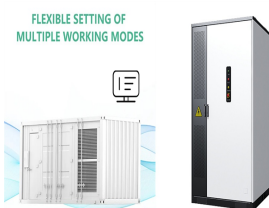
The new Biolite SolarHome 620 is a Solar station for small scale, emergency preparation, comfort camping, van life or small house or cabin electronics kit. It includes a radio, MP3 (do people still refer to them as MP3's) player, USB device charger, living individual switched daisy chained lighting, all powered by a small solar panel, and on-board battery. BioLite is a ???



The BioLite SolarHome System 620 lets you use the power of the sun to brighten up your home. Includes a splashproof 6-watt solar panel and 20-watt battery to power lights, radio, and charging station. Provides up to 14 hours of power with 1 day of sun. Features: ??? 100 lumen light ??? Motion-activated security light



+ ??? SolarHome's name comes from the 6-watt solar panel and 20 watt hour battery inside the control box that keeps the whole system running. An Integrated LED display provides real-time feedback on your sun strength and power available. SolarHome 620+ is currently in over 40,000 homes across Western Kenya in use every day.



The BioLite SolarHome 620 provides power for lights, device charging, radio and music by harnessing the sun's rays. The control box has a 6V, 3,300mAh battery that's powered by the solar panel

WESTERN SAHARA BIOLITE SOLARHOME 620 BATTERY EXPANSION



Shop BioLite SolarHome System 620+ | 17% Off Be The First To Review BioLite SolarHome System 620+ Blazin" Deal + Free Shipping over \$49. All BioLite Battery Chargers Reviews All Battery Chargers Reviews All BioLite Reviews All Customer Product Reviews. BioLite's first-crossover product, the SolarHome 620+ is currently in use in over



BioLite's first crossover product, the SolarHome 620+ is currently in use in millions of homes across sub-Saharan Africa, delivering reliable daily energy to off-grid families. Turn any off-grid structure into an electrified home with a kit ???



The BioLite SolarHome 1025 has a larger solar panel than the SolarHome 625, for the same battery and light output. The larger panel ensures the battery is fully charged even during cloudy days, storing enough energy to power the three hanging lights, including one motion-activated light, an FM radio, MP3 player, and tw



How do I reset the language on my SolarHome 620+? SolarHome 620 and 620+ Product Guide; I don't have a van or cabin ??? can I use the SolarHome 620 for emergencies? How does the SolarHome 620 motion sensor work? Can the SolarHome 620 lights be controlled individually? Why doesn't the SolarHome 620 have an audio jack to play music?



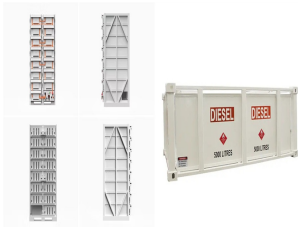
Buy the BioLite SolarHome 620 online or shop all Hike & Camp from Backcountry . Skip to Content Skip to Search. The 20Wh battery gets its power from a 6-watt solar panel that is designed to efficiently get power from the sun instead of using limited resources, so whether you won't have access or just don't want to use them, you'll be

WESTERN SAHARA BIOLITE SOLARHOME

620 BATTERY EXPANSION



The "620" in the name, SolarHome 620, comes from the 6-watt solar panel and the 20-watt-hour battery bank. In even average sunlight conditions, the SolarHome 620 can be used moderately at night and charged during the day without a break in power. Why is the Biolite SolarHome Useful? Energy efficiency is an important topic.



BioLite. The control box includes its own light, a radio, and even built-in storage for other emergency accessories. To set up the SolarHome 620, all you need is a hammer and a sense of rustic whimsy.



We have a BioLite SolarHome 620 kit that we like as a backup light source for the occasional power failure or for camping. your own, all prices very approx, \$100 100w panel, \$20 charge controller, \$40 inverter, and \$100 battery) - for that, you would get ****way**** more power, and be able to upgrade, etc. More importantly than those things



The SolarHome 620 brings modern lighting, energy, and entertainment to transform any structure into an off-grid home. The easy-to-install solar panel captures daily sun to charge up a central control box which powers 3 hanging lights, USB charge-out, and an MP3/FM radio system. BioLite's first-crossover product, the So



You have completed the setup for your new SolarHome 620. The following pages will guide you on operating your system. 1 6 7 8 4 3 5 9 1. Light 2. Control Panel 3. Phone Storage 4. Radio/MP3 Speaker 5. Micro SD Card Slot 6. Hanging Light Input 7. Solar Panel Input 8. Battery Expansion Port 9. USB Charge Out CONTROL BOX CONTROLS & SCREEN 1. Radio

WESTERN SAHARA BIOLITE SOLARHOME 620 BATTERY EXPANSION



As a crossover product, the SolarHome 620+ was designed for use predominantly among off-grid households across sub-Saharan Africa. In 2020 our product range in local emerging markets expanded to include a larger solar home solution that can be paired with SolarHome 620+ for more power, light, and solar TV (you can read about it in our 2020



BioLite SolarHome 620. The SolarHome 620 can transform an off-grid structure into an electrified home ??? and it all fits in the size of a shoebox. (the system stores power via a 20 watt-hour battery, hence the name 620: 6 watt panel, 20 watt-hour battery) as well as access to FM radio and MP3 capabilities, and 2 USB-charging ports to keep



Turn any off-grid structure into an electrified home with the BioLite SolarHome 620+, a self-contained system with hanging lights, MP3/FM radio, solar charger and USB charge-out for your devices. 1 DIN port for expansion battery (not included); 2 ports for included hanging lights; and 3 light extension junctions;